

FOR LEASE

TROY TECHNOLOGY PARK BUILDINGS B-K



**1835-1975 TECHNOLOGY DRIVE AND 1960 RING DRIVE
TROY, MI 48083**

PROPERTY HIGHLIGHTS:

- High-tech industrial and flex opportunity available within desirable Troy Technology Park
- State-of-the-art infrastructure and facilities designed to meet the demands of modern high-tech operations
- Suites ranging from +/- 9,000 SF up to 41,000 SF of flex space with ability for adding overhead doors
- Flexible floor plans and adaptable spaces ideal for R&D, light manufacturing, office or medical use
- Potential for customized build-out options to suit specific tenant requirements
- Competitive leasing terms and incentives for qualified tenants in Troy Technology Park
- Prominent building façade and monument signage along John R or Industrial Drive
- Dedicated property management team committed to providing responsive service and maintaining high standards
- Fiber-optic internet connectivity and infrastructure in place
- Ample parking and easy access for employees and visitors
- Major automotive and technology companies located within the Park including Magna Powertrain, LG Energy, LG Electronics, LabCorp Group, Rousch Industries, and many more
- Troy Technology Park is situated just North of the Oakland Mall and within proximity of several restaurants and entertainment venues

The information provided herein along with any attachment(s) was obtained from sources believed to be reliable, however, Friedman Real Estate makes no guarantees, warranties, or representations as to the completeness or accuracy of such information and legal counsel is advised. All information provided is subject to verification and no liability for reliance on such information or errors or omissions is assumed. The presentation of this property is submitted subject to errors, omissions, change of price or conditions, prior sale or lease, or withdrawal without notice. Copyright © 2026 Friedman Real Estate. All rights reserved.

FOR MORE INFORMATION PLEASE CONTACT:



ROBERT GAGNIUK

Director, Commercial Portfolio Leasing
robert.gagniuk@freg.com

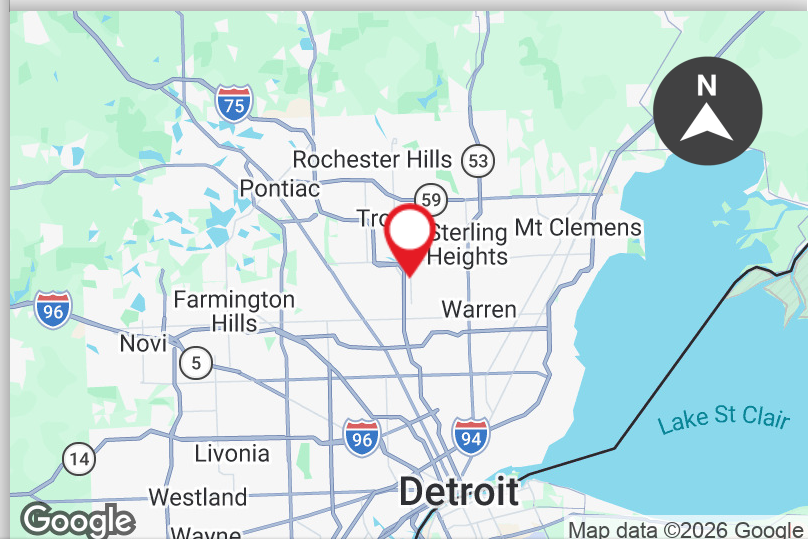


JARED FRIEDMAN

Co-CEO
jared.friedman@freg.com

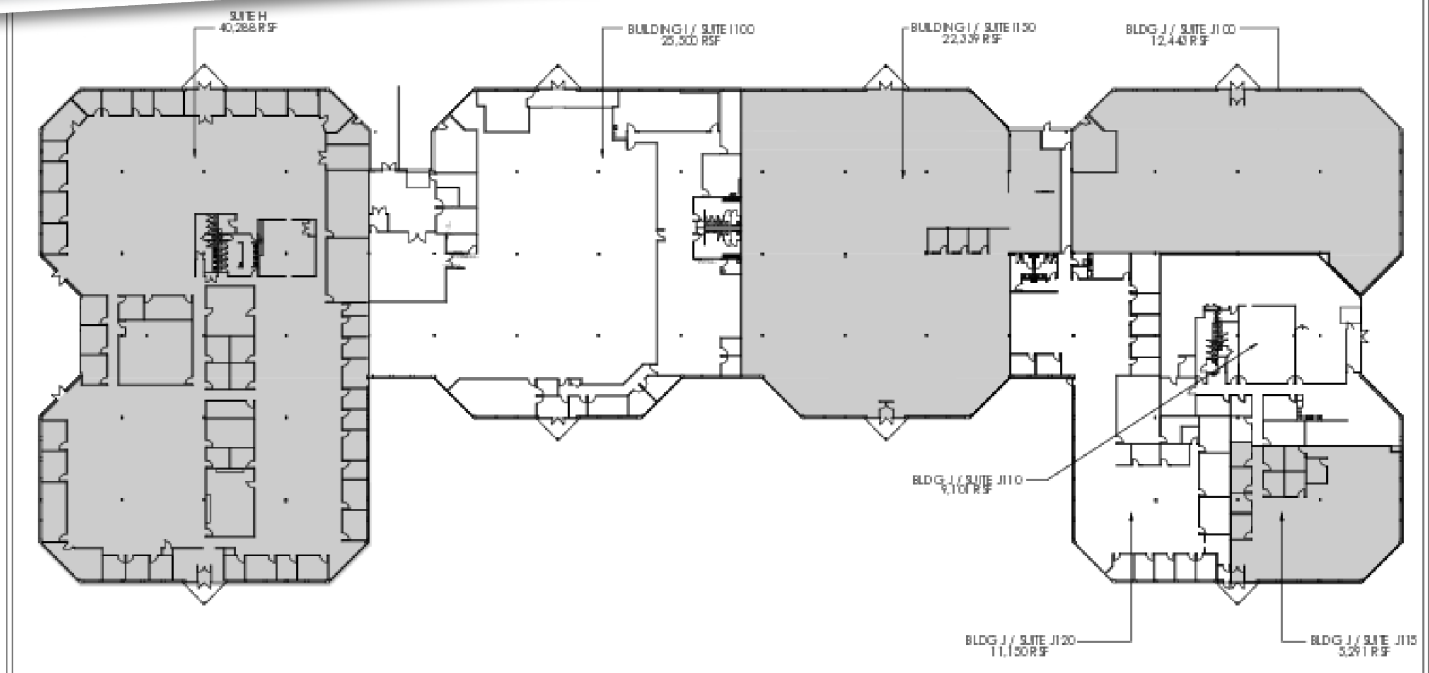
248.324.2000

eCODE 392



TROY TECHNOLOGY PARK BUILDINGS B-K

PROPERTY **AVAILABILITY**



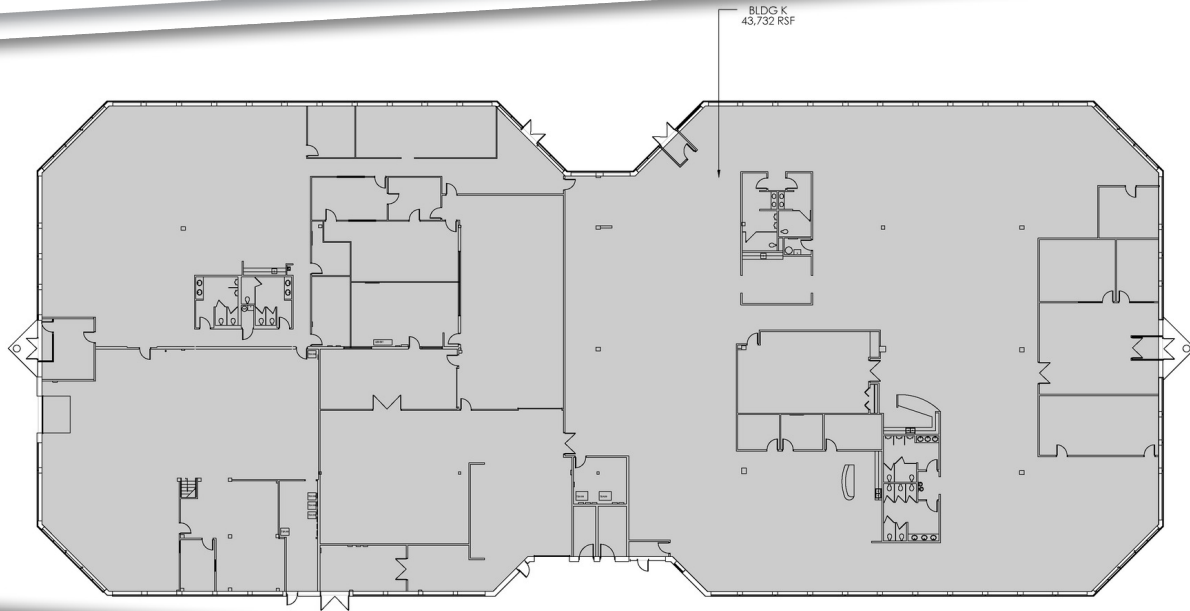
AVAILABLE SUITES

SPACE	SPACE USE	LEASE RATE	LEASE TYPE	SIZE (SF)
Suite H - Building H	Flex Space	\$12.95 SF/yr	NNN	40,288 SF
Suite I150 - Building I	Flex Space	\$12.95 SF/yr	NNN	22,339 SF
Suite J100 - Building J	Flex Space	\$12.95 SF/yr	NNN	12,443 SF
Suite J115 - Building J	Flex Space	\$12.95 SF/yr	NNN	5,291 SF



TROY TECHNOLOGY PARK BUILDINGS B-K

PROPERTY **AVAILABILITY**

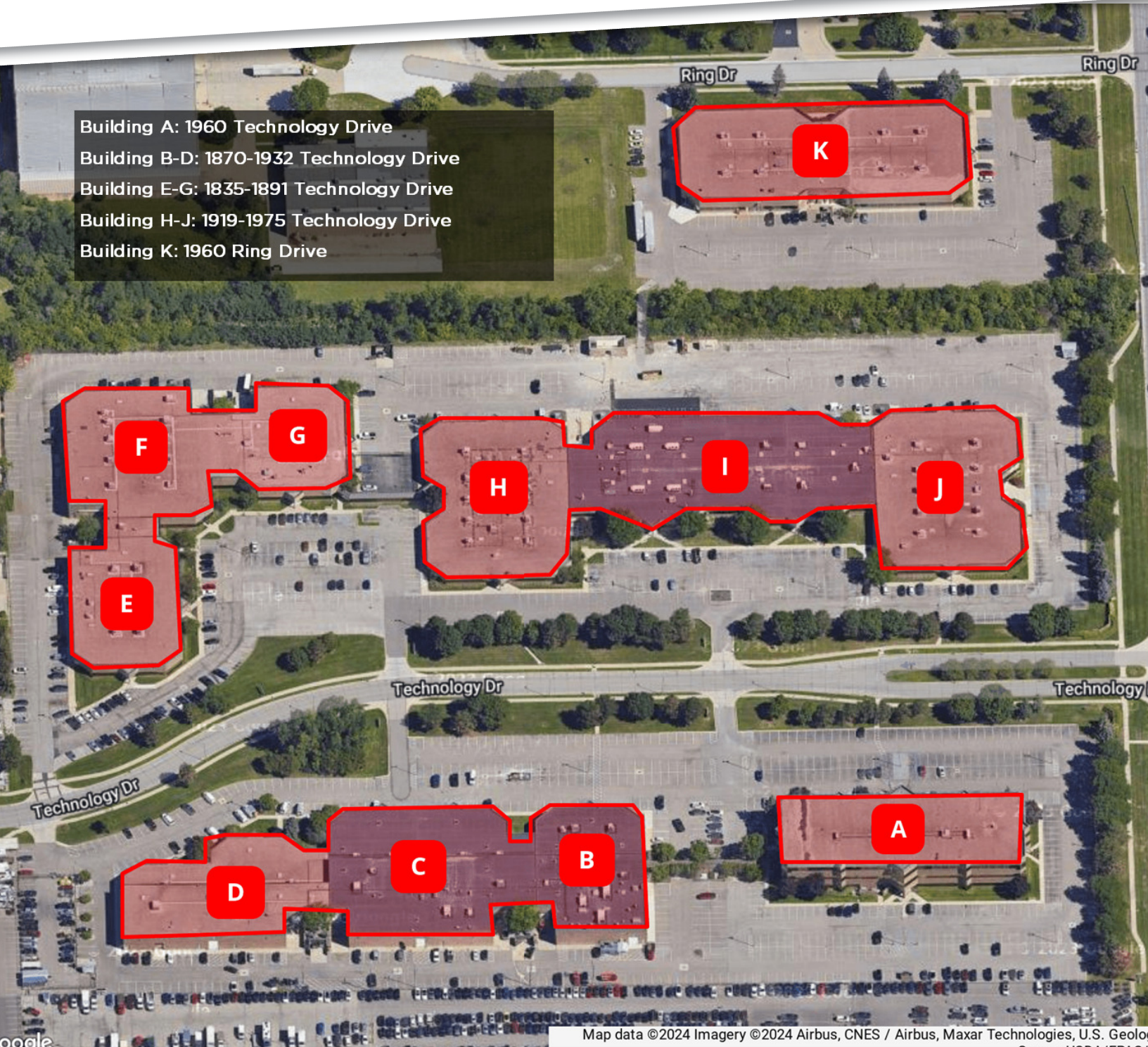


AVAILABLE SUITES

SPACE	SPACE USE	LEASE RATE	LEASE TYPE	SIZE (SF)
Suite K - Building K	Flex Space	\$12.95 SF/yr	NNN	43,732 SF

TROY TECHNOLOGY PARK BUILDINGS B-K SITE PLAN

Building A: 1960 Technology Drive
Building B-D: 1870-1932 Technology Drive
Building E-G: 1835-1891 Technology Drive
Building H-J: 1919-1975 Technology Drive
Building K: 1960 Ring Drive



Map data ©2024 Imagery ©2024 Airbus, CNES / Airbus, Maxar Technologies, U.S. Geol
Survey USGS/EDAC