

# Office/Warehouse Space for Sub~Lease

## Lake Industrial Park



**Sam Morse**  
 Cell: 509-370-9166  
 smorse@cantucommercial.com

**Kade Morse**  
 Cell: 509-954-1450  
 kmorse@cantucommercial.com

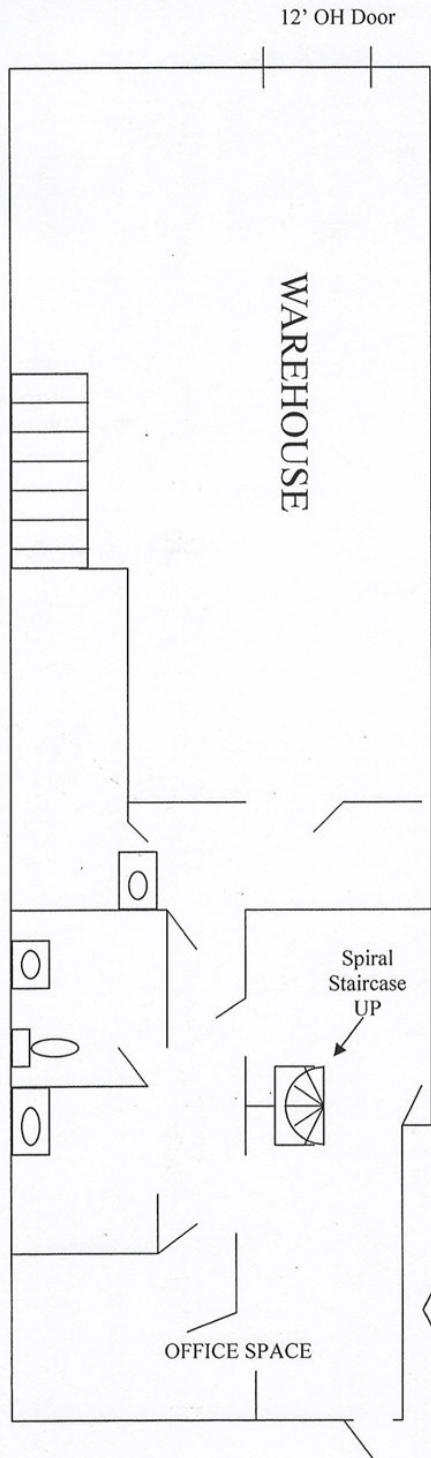


524 W Indiana Ave Suite A  
 Spokane, WA 99205  
 Office (509) 777-1111  
 Fax (509) 777-1112  
 www.cantucommercial.com

- Shared Dock Well for All Tenants
- Located 1 Blk East of Fancher
- Fenced Yard Area Available
- Signage Available
- New Pole Sign
- Ample On-Site Parking
- 3 Phase Power Available
- Each Unit has a 12'X12' or 12' x 10' Roll Up Door-See Floor Plan
- NNN's Estimated at .258¢

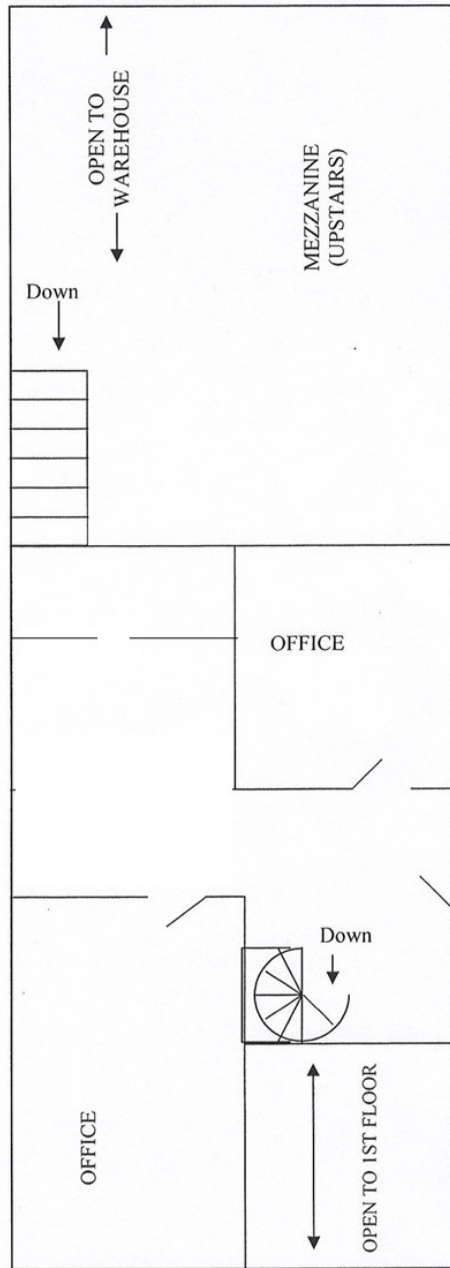
<u>UNIT</u>	<u>TOTAL</u>	<u>OFFICE</u>	<u>WHSE</u>	<u>2ND FLOOR</u>	<u>RENT &amp; NNN</u>
# 918	2,617 SF	1,050 SF	750SF	867 SF	\$1,309.48 + \$451.50 NNN
# 924	2,375 SF	662 SF	1,088 SF	625 SF	\$2,317.50 + \$612.75 NNN
#930-932	4,650 SF	360 SF	3,360 SF	930 SF	
#934 A&B	3,100 SF	540 SF	1,890 SF	670 SF	
<b>(Combined Units being Leased together as a Whole ~ 7,750 SF</b>					<b>\$6,799.31 + \$1,999.50 NNN</b>
#1022	1,912 SF	162 SF	1,588 SF	162 SF	\$1,650.00 + \$ 452.03 NNN

**918 Lake**  
**2,617 Total SF**



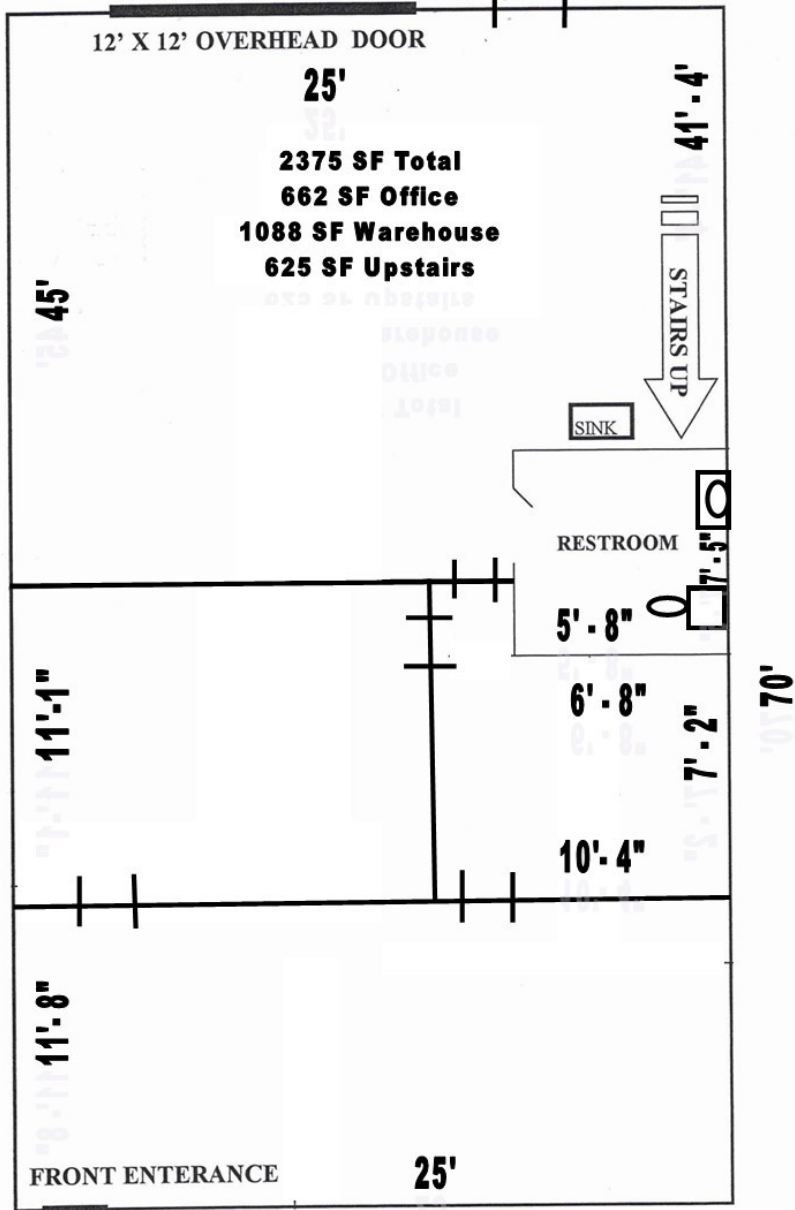
**Lower Level**  
**1,050 SF Office**  
**750 SF Warehouse**

**Upper Level**  
**867 SF Office**

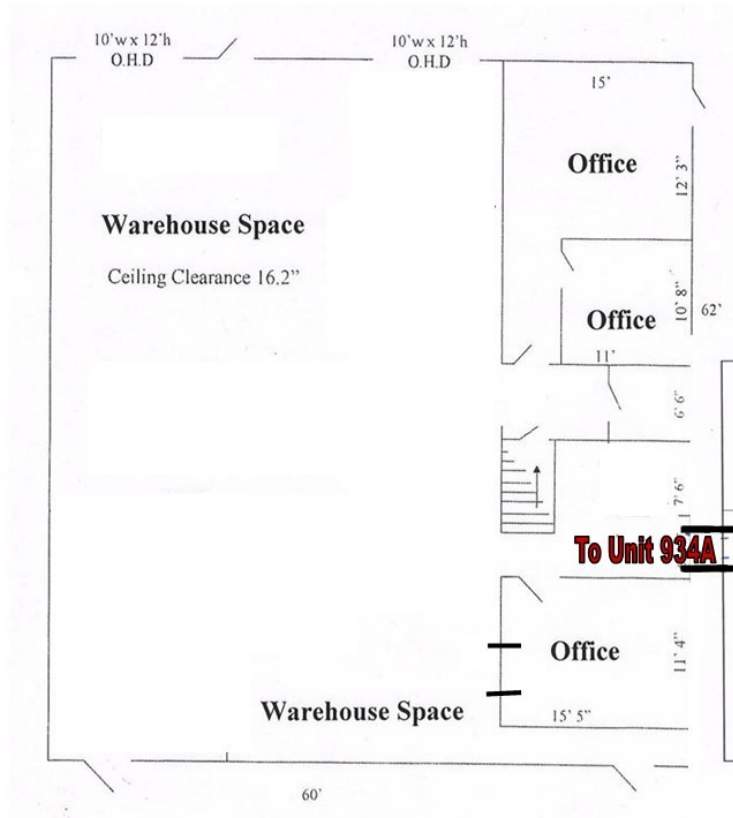


# 924 N LAKE

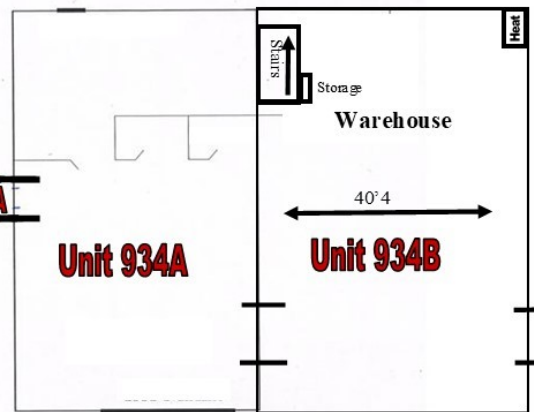
## STE 924



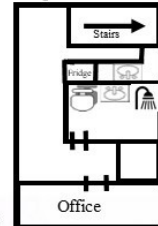
# Unit 930 & 932



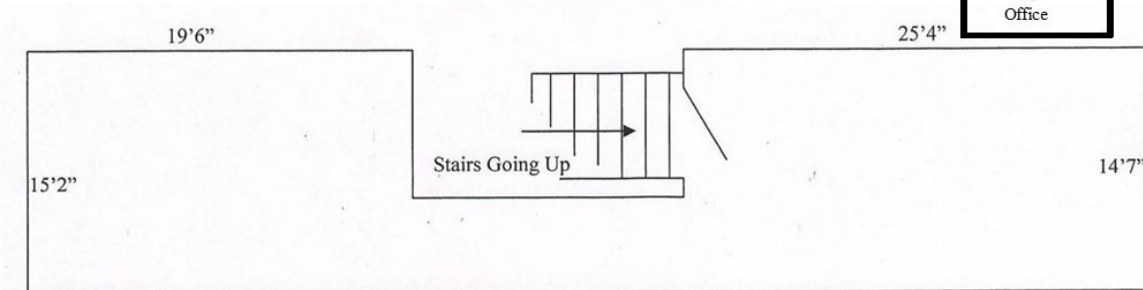
# Unit 934 A & B



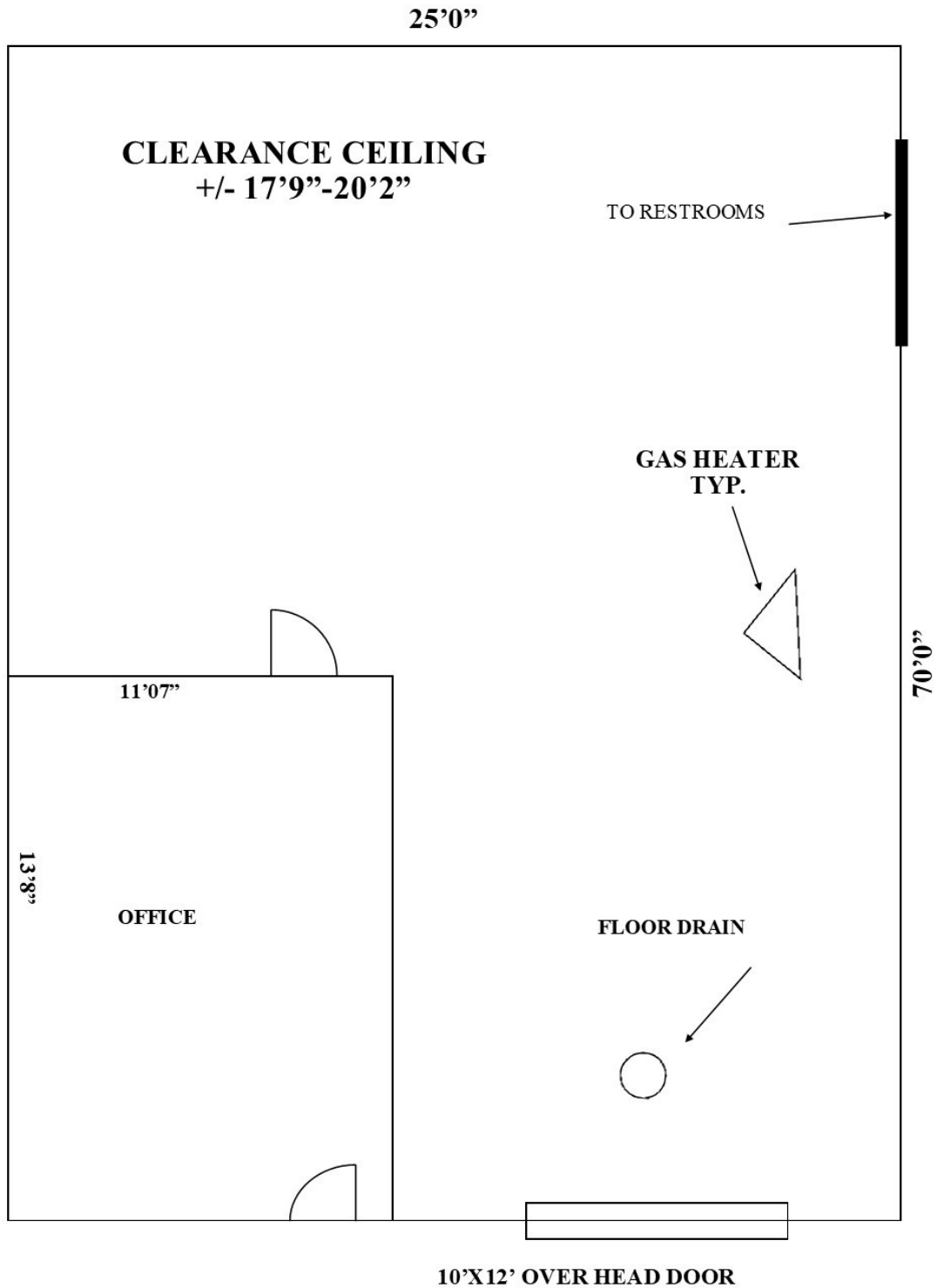
## Upstairs 934B



# Upper Floor Space 930-932 Unit



# 1022 N LAKE



These floor plans are for convenience use only. All critical measurements should be verified.

# BLDG "A"

<b>BAY #1014</b> leased	<b>BAY #1016</b> leased	<b>BAY #1018</b> leased	<b>BAY #1020</b> leased	<b>BAY #1022</b> AVAIL	<b>BAY #1024</b> leased	<b>BAY #1026</b> leased	<b>FENCED YARD W/ 19' WIDE GATE</b>
<b>BAY #1012</b> leased							
<b>BAY #1010</b> leased							

# BLDG "B"

<b>BAY #910</b> leased	<b>BAY #912</b> leased	<b>BAY #914</b> leased	<b>BAY #916</b> leased	<b>BAY #918</b> AVAIL	<b>BAY #920</b> leased	<b>BAY #922</b> leased	<b>BAY #924</b> AVAIL	<b>BAY #926</b> leased	<b>BAY #928</b> leased
---------------------------	---------------------------	---------------------------	---------------------------	--------------------------	---------------------------	---------------------------	--------------------------	---------------------------	---------------------------

# BLDG "D"

<b>BAY #1</b> 930 & 932 AVAILABLE	<b>BAY #2A</b> 934A AVAIL	<b>BAY #2B</b> 934B AVAIL
---	---------------------------------	---------------------------------

LAKE RD

# LAKE INDUSTRIAL PARK SITE PLAN

This drawing is for convenience only. All critical measurements should be verified.