



## COMMERCE CENTER

INDUSTRIAL SPACE  
FOR LEASE

**TOK**  
COMMERCIAL



**15918 STAR ROAD | NAMPA, IDAHO**



**DEVIN PIERCE** SIOR | 208.947.0850 | [devin@tokcommercial.com](mailto:devin@tokcommercial.com)

**DAN MINNAERT** SIOR, CCIM | 208.947.0845 | [dan@tokcommercial.com](mailto:dan@tokcommercial.com)

**MIKE ARNOLD** | 208.957.5609 | [mikea@tokcommercial.com](mailto:mikea@tokcommercial.com)



**15918 STAR ROAD | NAMPA**

**BUILDING 1: 40,600 | AVAILABLE!**  
**BUILDING 2: 40,600 | AVAILABLE!**

- New Construction, Class A Industrial Park
- Industrial Park (IP) Zoning allows for a wide variety of uses
- ESFR Sprinklering
- Dock and grade level doors
- Front park, rear load buildings
- Divisible to 5,217 and 9,933 SF
- 24' - 26' clear height
- Minutes to two I-84 interchanges
- Exceptional tenant visibility
- Prime location for servicing the entire Treasure Valley

# BUILDINGS 1 & 2

15918 STAR ROAD | NAMPA

**TOK**  
COMMERCIAL



**FIRE SUPPRESSION**  
ESFR SYSTEM



**DELIVERY**  
Q3 2026



**INTERSTATE ACCESS**  
5 Minutes to I-84



**LEASE RATES**  
Contact Agent

## PROPERTY TYPE

Industrial | Distribution Warehouse

## BUILDING SIZE

40,600 SF

## CONSTRUCTION TYPE

Concrete Tilt

## TOTAL AVAILABLE/BUILDING

(2) 9,806 - 9,930 SF with 987 SF Office

(4) 5,217 Suites with 1,092 SF Office

## DOCK DOORS

Yes | 1/Bay

## GRADE LEVEL DOORS

Yes | 1/Bay (12'x14')

## POWER

480/277v | 3 Phase | 1,000 Amps  
(per building)

## PARKING

2.1/1,000

## TRUCK COURT DEPTH

135' minimum

## BUILDING DEPTH

100'

## COLUMN SPACING

52'

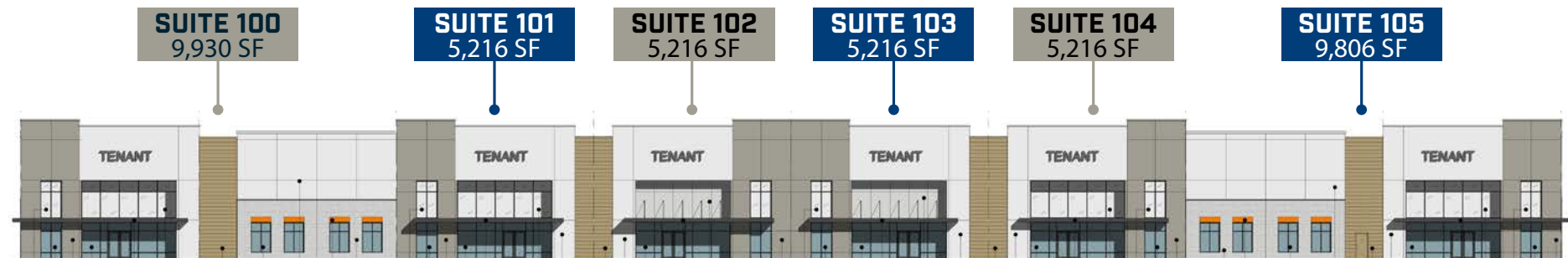
## CLEAR HEIGHT

24' - 26'

# BUILDING 1 FLOOR PLAN

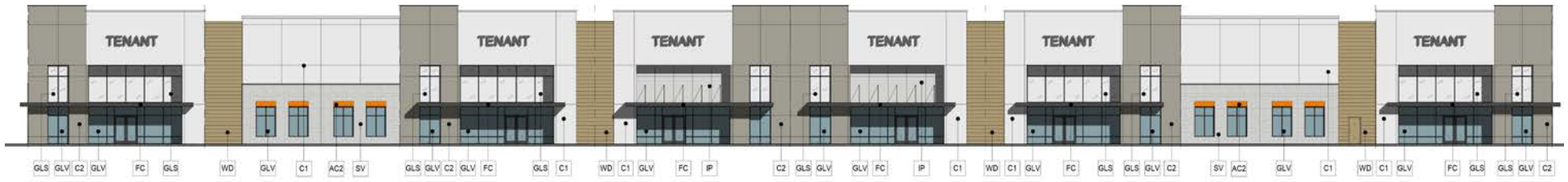
15918 STAR ROAD | NAMPA

## BUILDING 1 - FLOOR PLAN

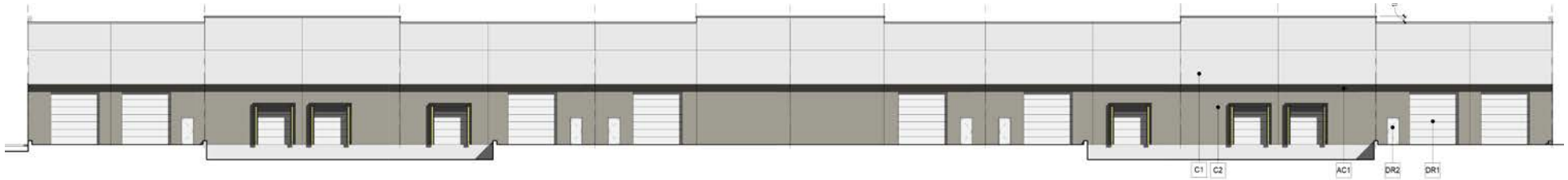


## PRIMARY WEST ELEVATION

## PRIMARY WEST ELEVATION



## EAST ELEVATION



## NORTH ELEVATION



## SOUTH ELEVATION







N IDAHO CENTER BLVD

STAR RD

FRANKLIN RD

PHASE 1

HWY 16 INTERCHANGE

↑ 6 MINUTES TO  
I-84 FROM SITE



3 MINUTES TO  
I-84 FROM SITE ↑

# CLOSE FREEWAY ACCESS