



Conservancy Court

620 E Green Bay Ave
 Saukville, Wisconsin 53080

Property Highlights

- Prime visibility with an AADT of +/- 21,700
- Variety of national and local tenants (Papa Murphy's, Sherwin Williams, dance studio, and more)
- Close proximity to big box retailers like Piggly Wiggly and Walmart
- Easy accessibility - within 1/2 mile from I-43

Property Overview

Situated in Saukville, WI, this strip center is conveniently located less than a mile away from major Interstate 43 and big box and specialty retailers such as Piggly Wiggly, Walmart, car dealership, and Starbucks . With its close proximity to major highways and easy access to neighboring communities, this location promises excellent visibility and accessibility for businesses looking to make their mark in this community.

Offering Summary

Lease Rate:	\$12.50 SF/Yr (NNN)
Building Size:	20,000 SF
Available SF:	1,488 - 3,829 SF
Lot Size:	5.28 Acres

Spaces	Lease Rate	Space Size
Suite 122	\$12.50 SF/yr	1,488 - 3,829 SF
Suite 118	\$12.50 SF/yr	2,341 - 3,829 SF

For More Information

Matt Hock

O: 414 882 4844 | C: 262 337 0883
 matt.hock@naigreywolf.com | WI #93728-94

Adam Butler

O: 414 377 5500
 adam.butler@naigreywolf.com



We obtained the information above from sources we believe to be reliable. However, we have not verified its accuracy and make no guarantee, warranty or representation about it. It is submitted subject to the possibility of errors, omissions, change of price, rental or other conditions, prior sale, lease or financing, or withdrawal without notice. We include projections, opinions, assumptions or estimates for example only, and they may not represent current or future performance of the property. You and your tax and legal advisors should conduct your own investigation of the property and transaction.

115 S. 84th St., Suite 350
Milwaukee, WI 53214
877 543 4739 tel
naigreywolf.com

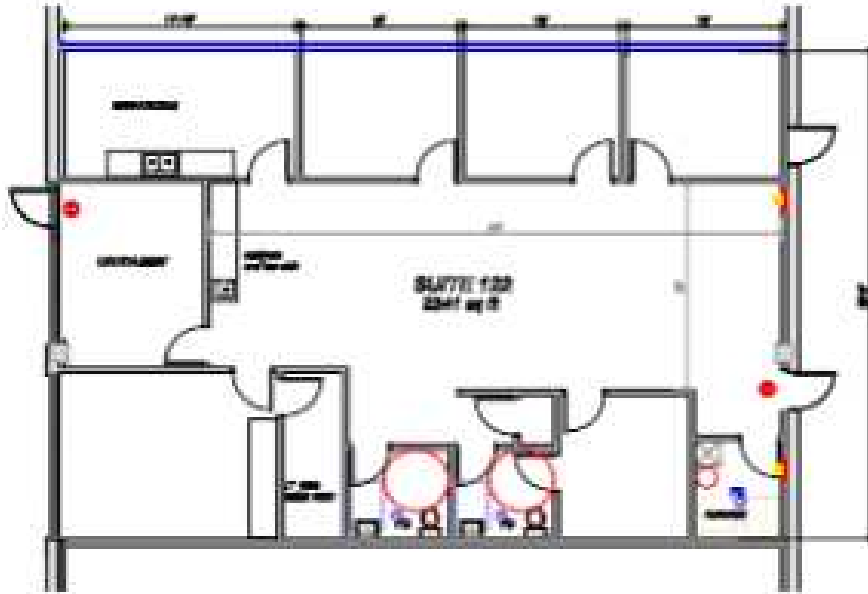


Lease Information

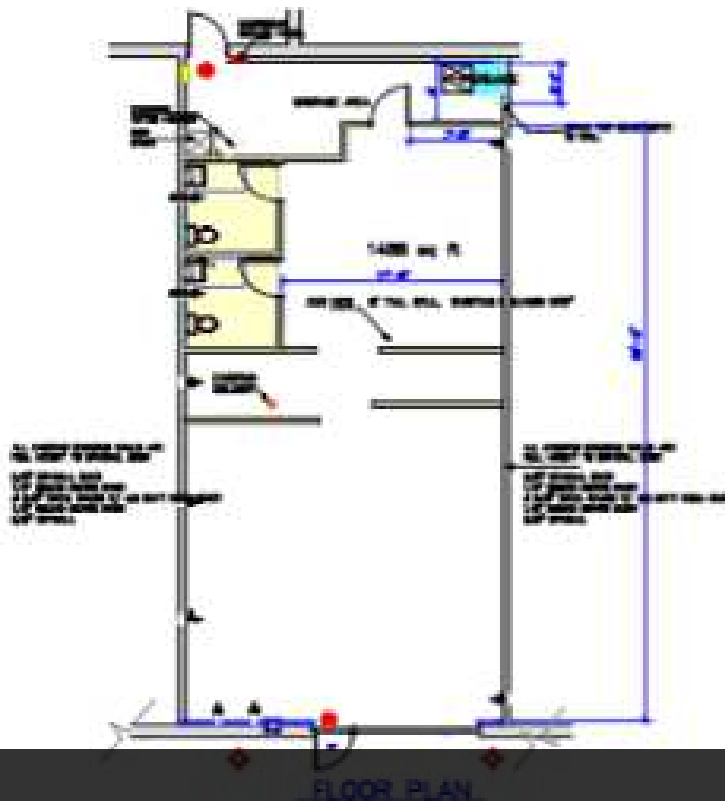
Lease Type:	NNN	Lease Term:	Negotiable
Total Space:	1,488 - 3,829 SF	Lease Rate:	\$12.50 SF/Yr

Available Spaces

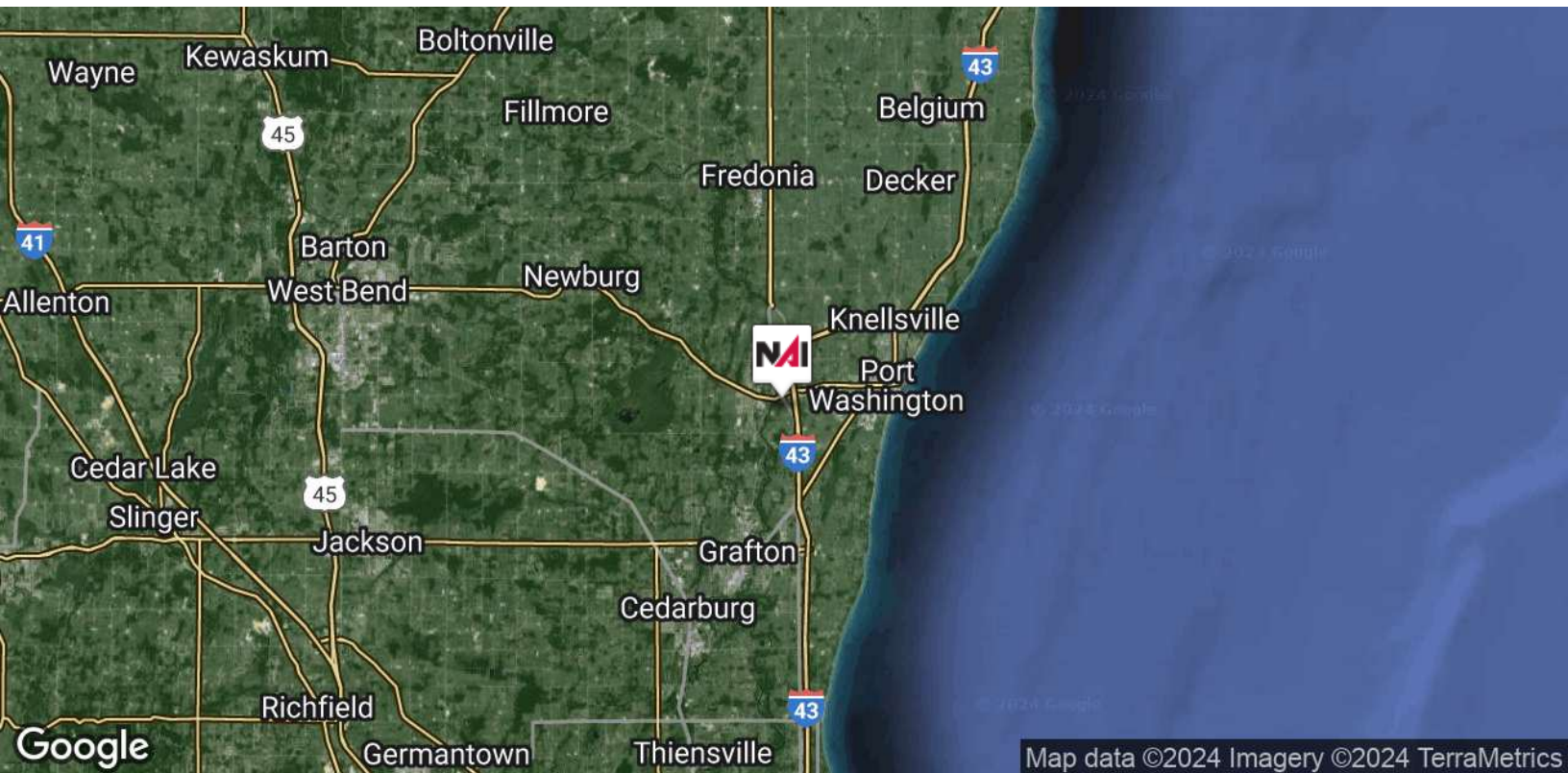
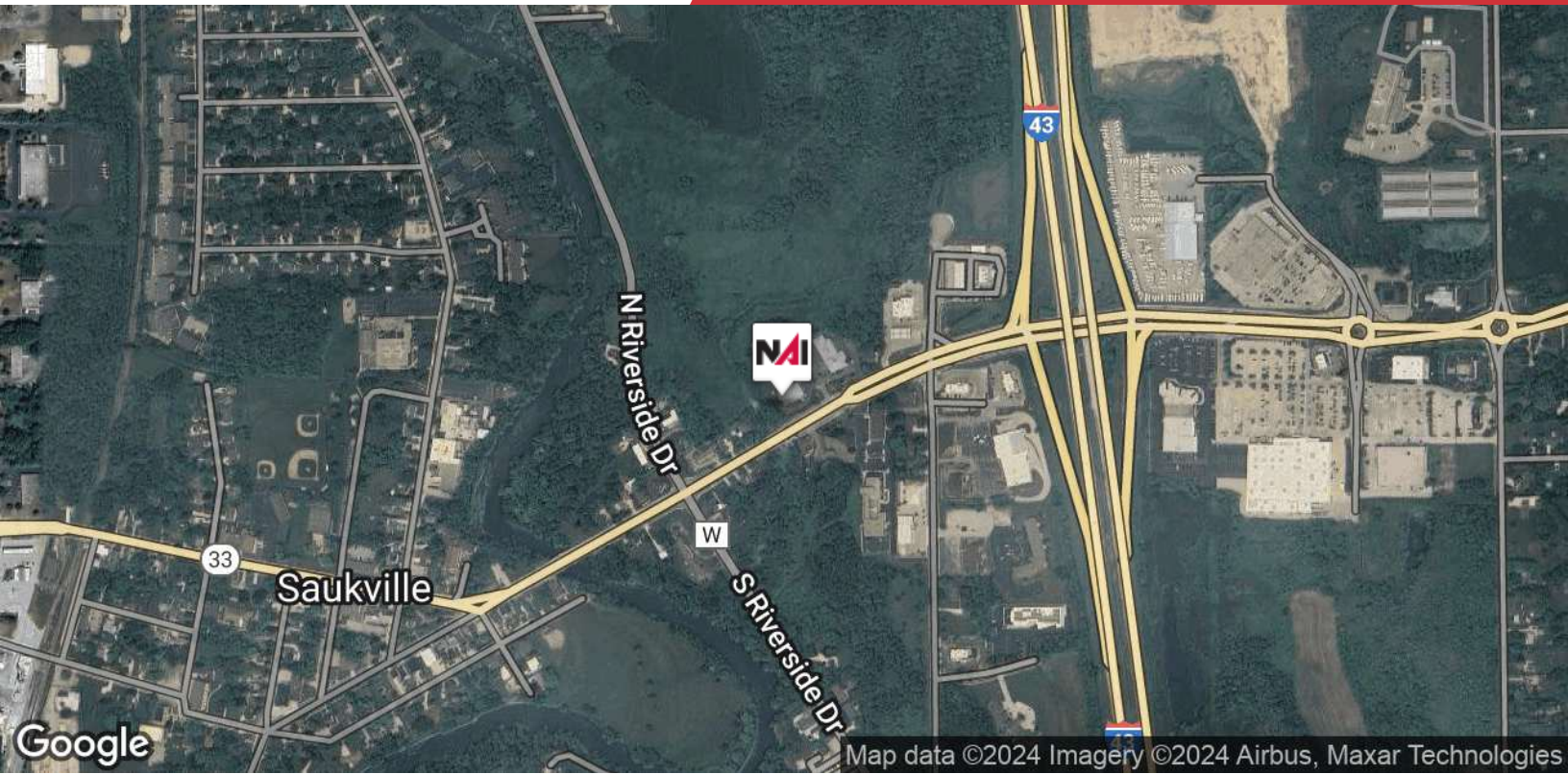
Suite	Tenant	Size (SF)	Lease Type	Lease Rate
Suite 122	Available	1,488 - 3,829 SF	NNN	\$12.50 SF/yr
Suite 118	Available	2,341 - 3,829 SF	NNN	\$12.50 SF/yr



Suite 122 - 1,500 SF



Suite 118 - 2,500 SF



We obtained the information above from sources we believe to be reliable. However, we have not verified its accuracy and make no guarantee, warranty or representation about it. It is submitted subject to the possibility of errors, omissions, change of price, rental or other conditions, prior sale, lease or financing, or withdrawal without notice. We include projections, opinions, assumptions or estimates for example only, and they may not represent current or future performance of the property. You and your tax and legal advisors should conduct your own investigation of the property and transaction.

115 S. 84th St., Suite 350
Milwaukee, WI 53214
877 543 4739 tel
naigreywolf.com

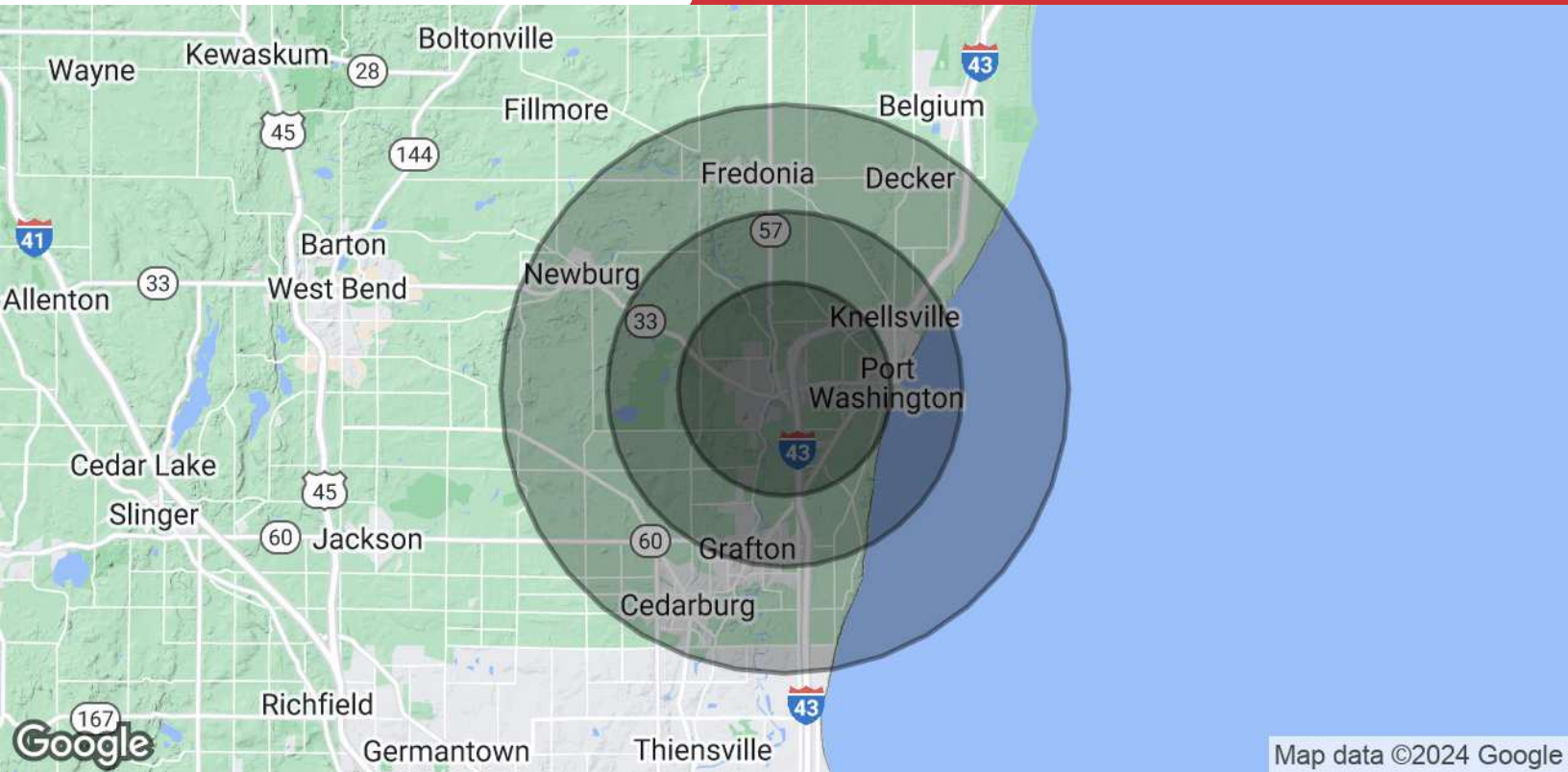


Google

Map data ©2024 Imagery ©2024 Airbus, Maxar Technologies

We obtained the information above from sources we believe to be reliable. However, we have not verified its accuracy and make no guarantee, warranty or representation about it. It is submitted subject to the possibility of errors, omissions, change of price, rental or other conditions, prior sale, lease or financing, or withdrawal without notice. We include projections, opinions, assumptions or estimates for example only, and they may not represent current or future performance of the property. You and your tax and legal advisors should conduct your own investigation of the property and transaction.

115 S. 84th St., Suite 350
Milwaukee, WI 53214
877 543 4739 tel
naigreywolf.com



Population

	3 Miles	5 Miles	8 Miles
Total Population	15,924	29,809	60,151
Average Age	38.7	41.2	42.3
Average Age (Male)	37.4	40.1	40.4
Average Age (Female)	40.5	42.9	44.2

Households & Income

	3 Miles	5 Miles	8 Miles
Total Households	6,936	13,081	25,896
# of Persons per HH	2.3	2.3	2.3
Average HH Income	\$82,085	\$88,196	\$95,685
Average House Value	\$232,743	\$251,509	\$274,899

2020 American Community Survey (ACS)

WISCONSIN REALTORS® ASSOCIATION
4801 Forest Run Road, Madison, WI 53704

NAI Greywolf
Effective July 1, 2016

DISCLOSURE TO NON-RESIDENTIAL CUSTOMERS

1 Prior to negotiating on your behalf the brokerage firm, or an agent associated with the firm, must provide you the
2 following disclosure statement:

3 **DISCLOSURE TO CUSTOMERS** You are a customer of the brokerage firm (hereinafter Firm). The Firm is either an agent
4 of another party in the transaction or a subagent of another firm that is the agent of another party in the transaction. A
5 broker or a salesperson acting on behalf of the Firm may provide brokerage services to you. Whenever the Firm is
6 providing brokerage services to you, the Firm and its brokers and salespersons (hereinafter Agents) owe you, the
7 customer, the following duties:

- 8 (a) The duty to provide brokerage services to you fairly and honestly.
- 9 (b) The duty to exercise reasonable skill and care in providing brokerage services to you.
- 10 (c) The duty to provide you with accurate information about market conditions within a reasonable time if you request
11 it, unless disclosure of the information is prohibited by law.
- 12 (d) The duty to disclose to you in writing certain Material Adverse Facts about a property, unless disclosure of the
13 information is prohibited by law (see lines 42-51).
- 14 (e) The duty to protect your confidentiality. Unless the law requires it, the Firm and its Agents will not disclose your
15 confidential information or the confidential information of other parties (see lines 23-41).
- 16 (f) The duty to safeguard trust funds and other property held by the Firm or its Agents.
- 17 (g) The duty, when negotiating, to present contract proposals in an objective and unbiased manner and disclose the
18 advantages and disadvantages of the proposals.

19 Please review this information carefully. An Agent of the Firm can answer your questions about brokerage services,
20 but if you need legal advice, tax advice, or a professional home inspection, contact an attorney, tax advisor, or home
21 inspector. This disclosure is required by section 452.135 of the Wisconsin statutes and is for information only. It is a
22 plain-language summary of the duties owed to a customer under section 452.133(1) of the Wisconsin statutes.

23 **CONFIDENTIALITY NOTICE TO CUSTOMERS** The Firm and its Agents will keep confidential any information given to the
24 Firm or its Agents in confidence, or any information obtained by the Firm and its Agents that a reasonable person
25 would want to be kept confidential, unless the information must be disclosed by law or you authorize the Firm to
26 disclose particular information. The Firm and its Agents shall continue to keep the information confidential after the
27 Firm is no longer providing brokerage services to you.

28 The following information is required to be disclosed by law:

- 29 1. Material Adverse Facts, as defined in Wis. Stat. § 452.01(5g) (see lines 42-51).
- 30 2. Any facts known by the Firm or its Agents that contradict any information included in a written inspection
31 report on the property or real estate that is the subject of the transaction.

32 To ensure that the Firm and its Agents are aware of what specific information you consider confidential, you may
33 list that information below (see lines 35-41) or provide that information to the Firm or its Agents by other means. At a
34 later time, you may also provide the Firm or its Agents with other Information you consider to be confidential.

35 **CONFIDENTIAL INFORMATION:** _____
36 _____
37 _____

38 **NON-CONFIDENTIAL INFORMATION** (the following information may be disclosed by the Firm and its Agents): _____
39 _____
40 _____

41 _____ (Insert information you authorize to be disclosed, such as financial qualification information.)

DEFINITION OF MATERIAL ADVERSE FACTS

43 A "Material Adverse Fact" is defined in Wis. Stat. § 452.01(5g) as an Adverse Fact that a party indicates is of such
44 significance, or that is generally recognized by a competent licensee as being of such significance to a reasonable
45 party, that it affects or would affect the party's decision to enter into a contract or agreement concerning a transaction
46 or affects or would affect the party's decision about the terms of such a contract or agreement.

47 An "Adverse Fact" is defined in Wis. Stat. § 452.01(1e) as a condition or occurrence that a competent licensee
48 generally recognizes will significantly and adversely affect the value of the property, significantly reduce the structural
49 integrity of improvements to real estate, or present a significant health risk to occupants of the property; or information
50 that indicates that a party to a transaction is not able to or does not intend to meet his or her obligations under a
51 contract or agreement made concerning the transaction.

52 **NOTICE ABOUT SEX OFFENDER REGISTRY** You may obtain information about the sex offender registry and persons
53 registered with the registry by contacting the Wisconsin Department of Corrections on the Internet at
54 <http://www.doc.wi.gov> or by telephone at 608-240-5830.

No representation is made as to the legal validity of any provision or the adequacy of any provision in any specific transaction.
Copyright © 2016 by Wisconsin REALTORS® Association Drafted by Attorney Debra Peterson Conrad

NAI Greywolf, 115 S. 84th Street, Suite 225 Milwaukee WI 53214
Walter Sauthoff

Produced with zipForm® by zipLogix 18070 Fifteen Mile Road, Fraser, Michigan 48026 www.zipLogix.com

Phone: 4142922345

Fax:

Wiegand-Marquette