

41805 ALBRAE STREET FREMONT, CA



±8,293 SF OFFICE/R&D CONDO



OWNER/USER OPPORTUNITY

FOR SALE OR LEASE

TOURS BY APPOINTMENT

AVAILABLE NOW

EXCLUSIVE AGENT:

FRED EDER

+1 408 489 2263
fred.eder@cushwake.com
LIC #00949342

300 Santana Row,
Fifth Floor
San Jose, CA 95128
P +1 408 615 3400
cushmanwakefield.com




©2025 Cushman & Wakefield. All rights reserved. The information contained in this communication is strictly confidential. This information has been obtained from sources believed to be reliable but has not been verified. NO WARRANTY OR REPRESENTATION, EXPRESS OR IMPLIED, IS MADE AS TO THE CONDITION OF THE PROPERTY (OR PROPERTIES) REFERENCED HEREIN OR AS TO THE ACCURACY OR COMPLETENESS OF THE INFORMATION CONTAINED HEREIN, AND SAME IS SUBMITTED SUBJECT TO ERRORS, OMISSIONS, CHANGE OF PRICE, RENTAL OR OTHER CONDITIONS, WITHDRAWAL WITHOUT NOTICE, AND TO ANY SPECIAL LISTING CONDITIONS IMPOSED BY THE PROPERTY OWNER(S). ANY PROJECTIONS, OPINIONS OR ESTIMATES ARE SUBJECT TO UNCERTAINTY AND DO NOT SIGNIFY CURRENT OR FUTURE PROPERTY PERFORMANCE.

41805 ALBRAE STREET FREMONT, CA



HIGHLIGHTS

- $\pm 8,293$ SF Office/R&D Condo
 - First Floor : $\pm 4,357$ SF
($\pm 3,059$ SF of Office & $\pm 1,298$ SF of Warehouse)
 - Second Floor $\pm 3,936$ SF of Office
- Breakrooms and Restrooms on Each Floor
- Possible Kitchen and Prep Area
- Furniture Can Be Available
- 1 Grade Level Door
- Sprinklered
- Possible Fenced Yard Area
- Extensive Glass Line
- Corner Unit
-  Visibility
- Monument Signage
- Tours Are by Appointment Only
- Available Now



FRED EDER

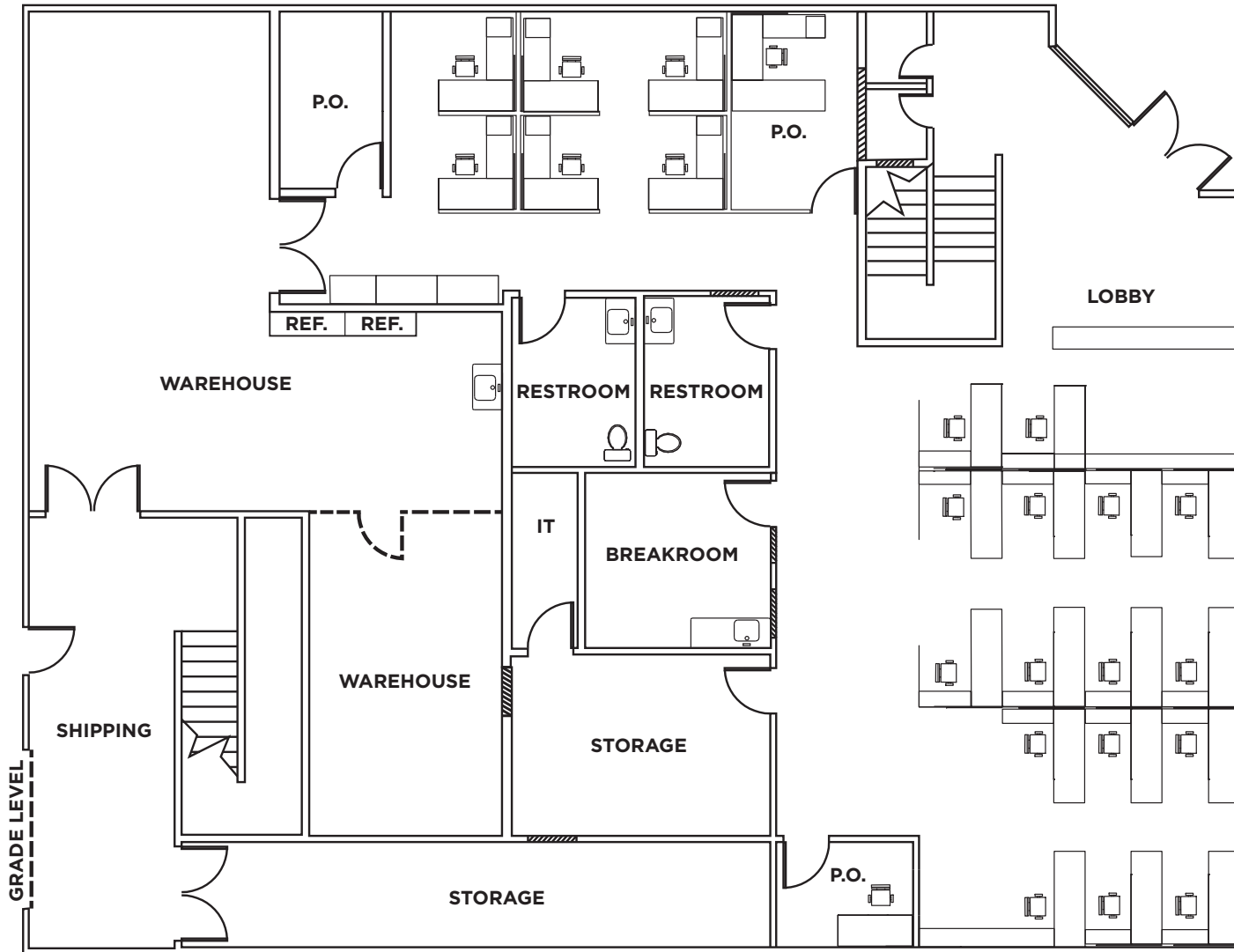
+1 408 489 2263
fred.eder@cushwake.com
LIC #00949342

41805 ALBRAE STREET

FREMONT, CA



FLOOR PLAN • First Floor



FRED EDER

+1 408 489 2263
fred.eder@cushwake.com
LIC #00949342

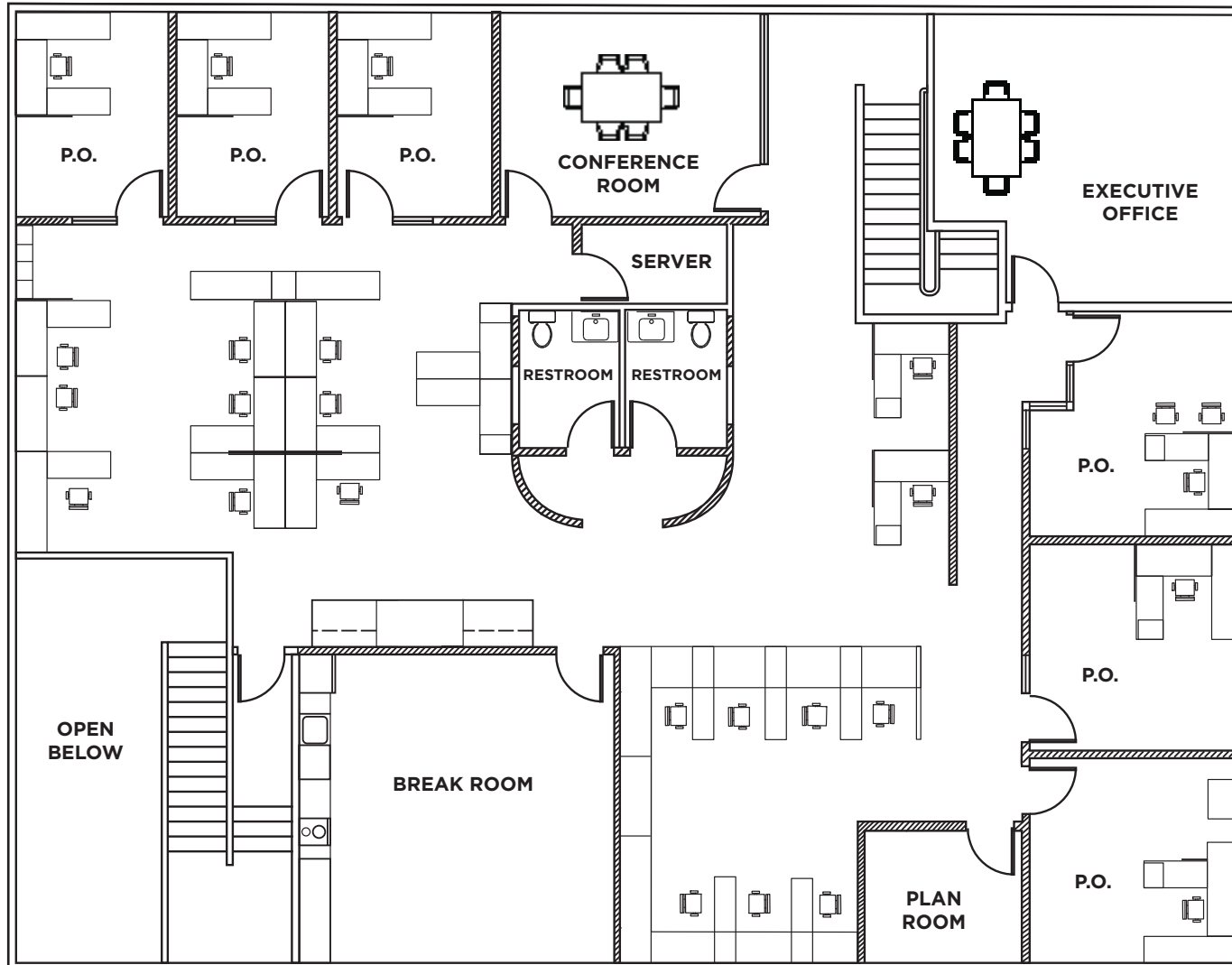
41805 ALBRAE STREET

FREMONT, CA



FLOOR PLAN

- Second Floor



FRED EDER

+1 408 489 2263
fred.eder@cushwake.com
LIC #00949342

LOCATION MAP

