

FOR LEASE

970 ISOM RD, SAN ANTONIO, TX 78216



2,751 SF Modern Office Space

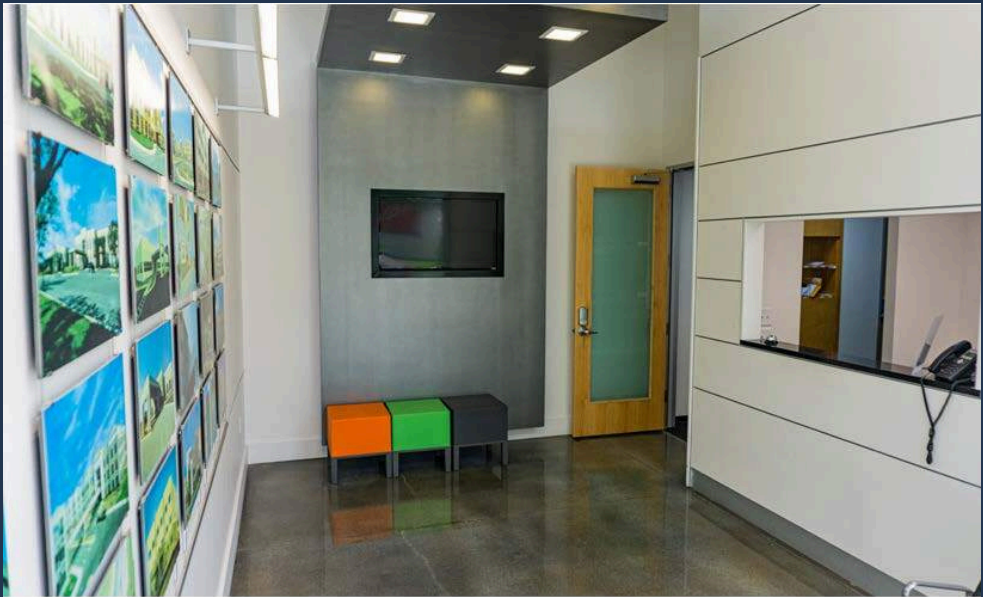
ABOUT THE PROPERTY:

970 Isom Rd is a modern 2,751 SF office space located in the Isom Road Business Park in North Central San Antonio. This office features attractive contemporary finishes and spacious private offices. Conveniently situated near San Antonio International Airport, it provides quick access to US-281, Loop 410, and Wurzbach Parkway, ensuring easy access to all parts of San Antonio in minutes.

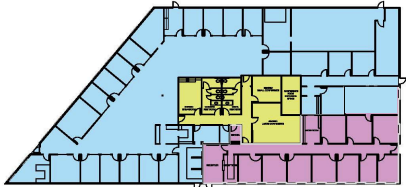
FEATURES:

- 2,751 SF office space
- Attractive contemporary finish out
- Large private offices
- Excellent central location near SAT
- Quick access to US-281, Loop 410, and Wurzbach Pkwy

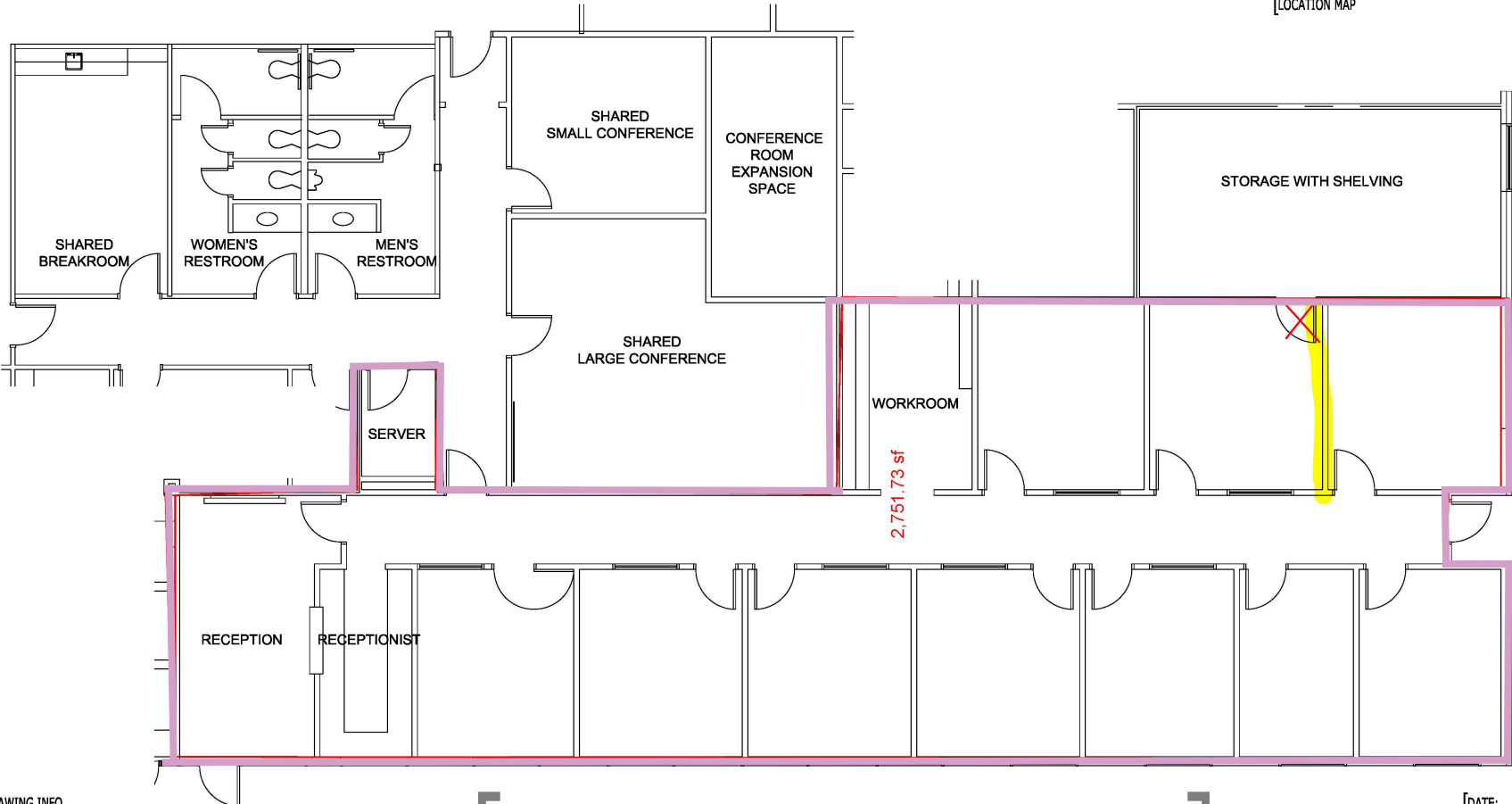
PROPERTY HIGHLIGHTS



FLOOR PLAN



[LOCATION MAP



[DRAWING INFO.
SCALE: 1/8" = 1'-0"
3,160 USF

RUTH@THEJORDANGROUP-SA.COM

970 ISOM - OPTION ONE

SAN ANTONIO, TEXAS

[DATE:
06/05/2020
06/08/2020
06/09/2020



AREA DETAILS & OVERVIEW





CONTACT OUR TEAM



Cullen Mills

Co-Founder & President
cmills@llanorealty.com
(210) 926-5812



Frank Harris

Associate
fharris@llanorealty.com
(210) 598-7274



Colin McLellan

Partner
cmclellan@llanorealty.com
(210) 908-6345