

FOR SALE

LYNNWOOD CHURCH FACILITY

*Lynnwood Church For Sale
with Up-To-Date Auditorium &
Support Space*

21105-21110 66TH AVE W LYNNWOOD, WA



Property Features

ADDRESS	21105-21110 66th Ave W Lynnwood, WA 98036
PARCEL NUMBERS	27042000401100 & 27042000401700
BUILDING SF	22,321 SF
TOTAL LAND SF	52,272 SF (1.2 Acres)
NUMBER OF FLOORS	Two
PARKING	~77 Stalls Additional nearby street parking available for Sundays
SANCTUARY SEATING CAPACITY	~450 People
AMENITIES	Large Fellowship Hall, Large Kitchen, Youth Worship Hall, Classrooms, Elevator, Large Foyer
ZONING	GC (General Commercial)

→ VIEW ZONING DETAILS

\$5,200,000
SALE PRICE

22,321
BUILDING SF



LYNNWOOD CHURCH FACILITY

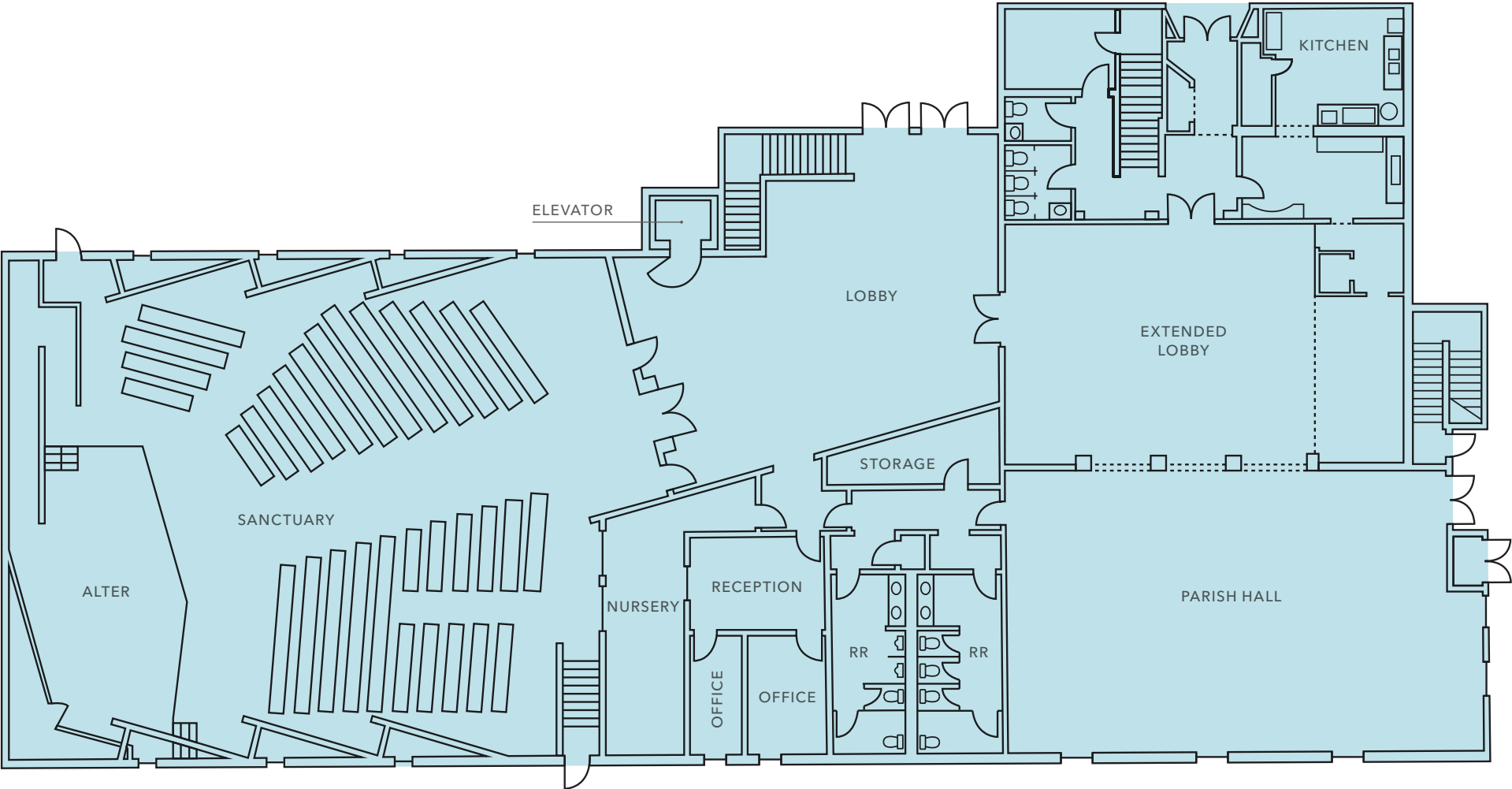
LOCATED *OFF SR-99* WITH HIGH TRAFFIC COUNTS & *NUMEROUS AMENITIES*



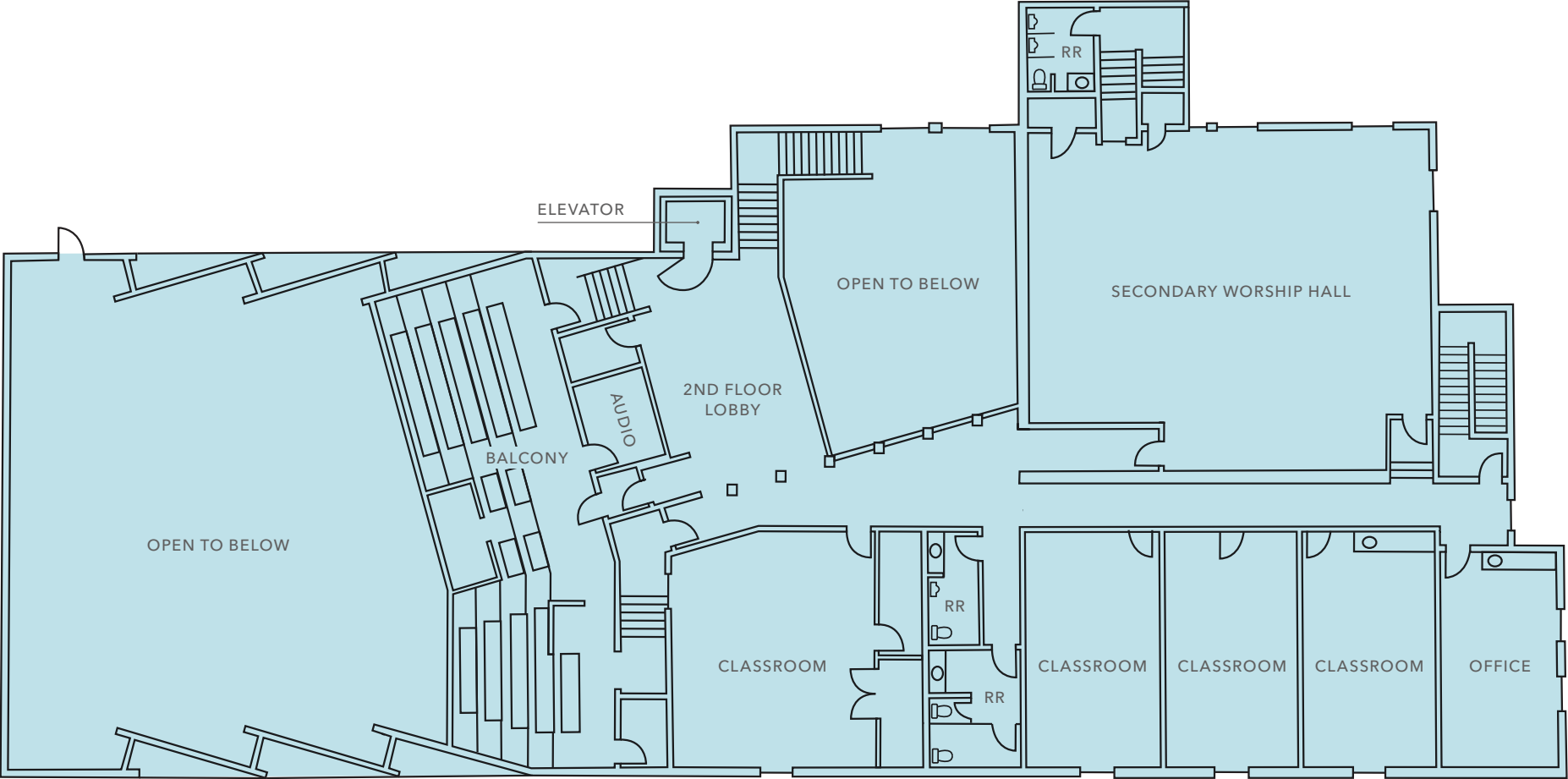
AVAILABLE FOR SALE

KIDDER MATHEWS

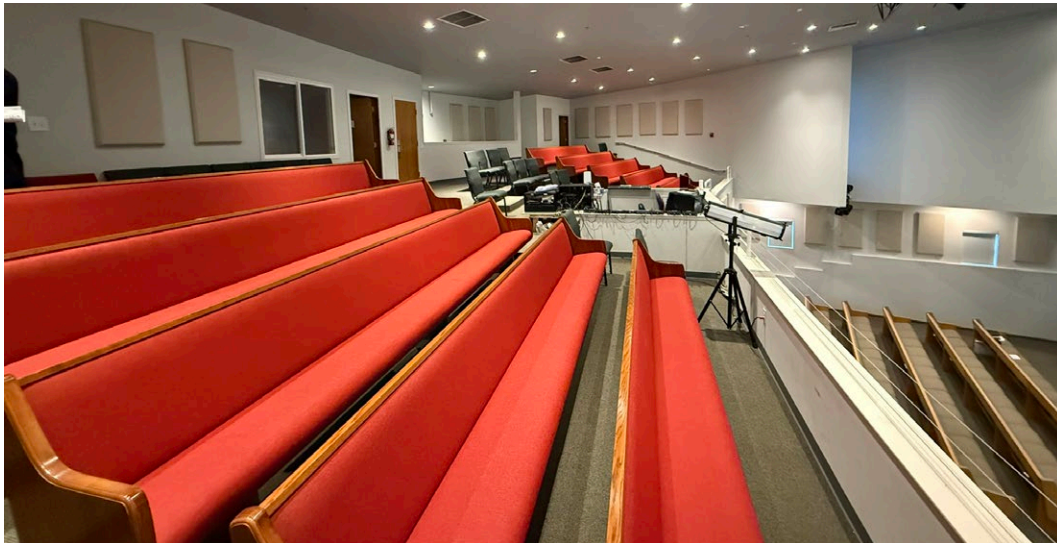
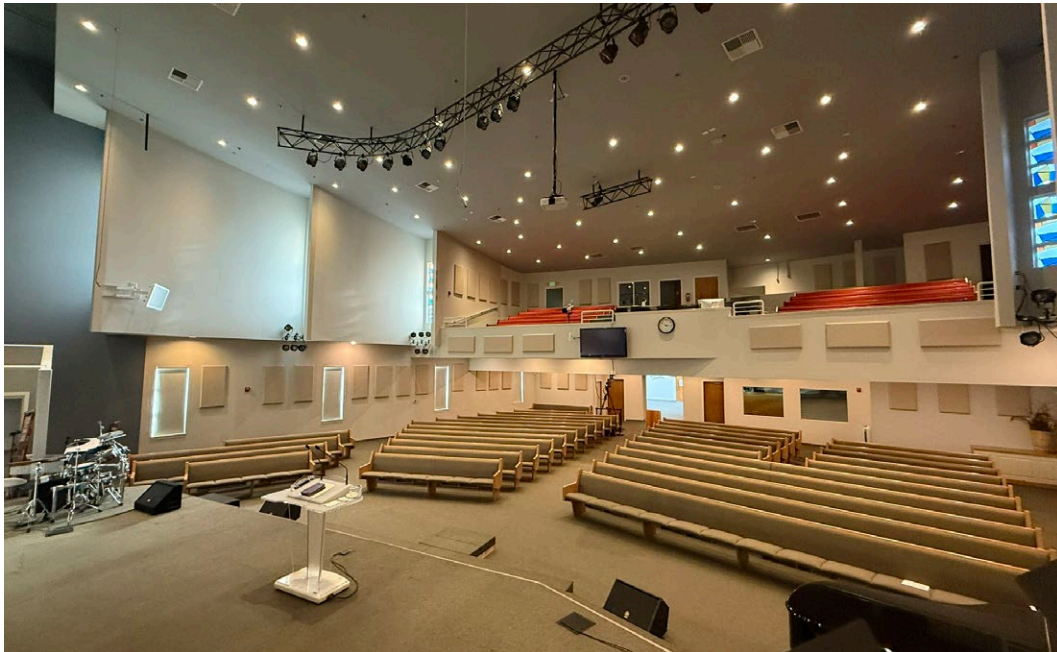
FLOOR PLAN | FIRSTLEVEL



FLOOR PLAN | SECOND LEVEL



LYNNWOOD CHURCH FACILITY



LYNNWOOD CHURCH FACILITY







Exclusively listed by

STEVE PELLUER

425.450.1180

steve.pelluer@kidder.com

ZEKE PELLUER

425.614.0082

zeke.pelluer@kidder.com

KIDDER.COM

This information supplied herein is from sources we deem reliable. It is provided without any representation, warranty, or guarantee, expressed or implied as to its accuracy. Prospective Buyer or Tenant should conduct an independent investigation and verification of all matters deemed to be material, including, but not limited to, statements of income and expenses. Consult your attorney, accountant, or other professional advisor. All Kidder Mathews designs are the sole property of Kidder Mathews. Branded materials and layouts are not authorized for use by any other firm or person.