

Yorkstone

MANAGEMENT



Available for Lease

10 King Street East

11th floor - 4,354 Sq.Ft.

contact: info@yorkstone.ca / (416) 203-1334

THE SPACE:

Office Space

Suite 1100 - 4,354 Sq. Ft.

- Full-floor office space
- Spacious reception area
- Large conference room
- Multiple private offices
- Phone room
- Spacious open-concept work area
- Fully-equipped kitchen
- Lounge area
- Large windows throughout the unit, filled with natural light

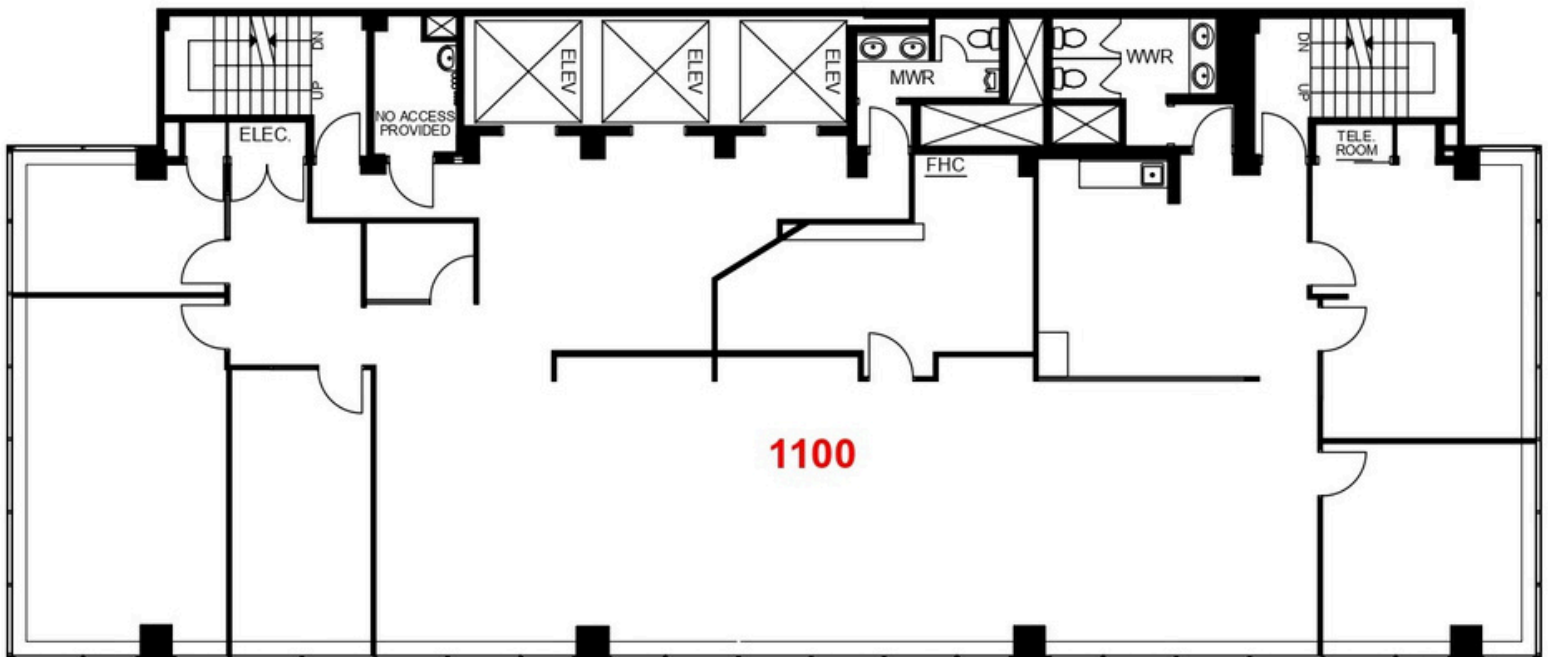
Building Information

- Building Size: 59,268 sf
- Total Number of Floors: 15
- Year Built: 1960
- Passenger Elevators: 3

Nearby Amenities:

- King Edward Hotel
- Path System
- Starbucks
- Dineen Coffee
- Numerous Restaurants
- King Subway Station

FLOOR PLAN:



SUITE PHOTOS:



contact: info@yorkstone.ca / (416) 203-1334