

420 GRAND AVENUE

LONG BEACH, CA | MID CENTURY MODERN OFFICE

Available For Lease



FOR MORE INFORMATION, PLEASE CONTACT:

YOUR LOCAL MARKET EXPERTS

 **LEE &
ASSOCIATES**
COMMERCIAL REAL ESTATE SERVICES

Noel Aguirre
Principal | Lic ID# 01263417
PH: 562.354.2526
E: naguirre@leelalb.com

Sean Lieppman, CCIM
Senior Associate | Lic ID# 01905266
PH: 562.354.2528
E: slieppman@leelalb.com

420 GRAND AVENUE

LONG BEACH, CA



PROPERTY FEATURES

- Unique creative space in Belmont Heights with live-work potential
- Exposed ceilings and skylights provide ample natural light
- Design elements include wood accents, glass doors, and steel framed windows
- Patio spaces are located behind rear units
- On-site parking
- Telecom Options Available
- Negotiable lease rates

PROPERTY FEATURES

Unit 102

3,200 RSF

Unit 104

1,395 RSF +
899 RSF on 2nd floor

Unit 106

1,636 RSF

FOR MORE INFORMATION, PLEASE CONTACT:

YOUR LOCAL MARKET EXPERTS

**LEE &
ASSOCIATES**
COMMERCIAL REAL ESTATE SERVICES

Noel Aguirre
Principal | Lic ID# 01263417
PH: 562.354.2526
E: naguirre@leelalb.com

Sean Lieppman, CCIM
Senior Associate | Lic ID# 01905266
PH: 562.354.2528
E: slieppman@leelalb.com

PROPERTY PHOTOS



Copyright © Lee & Associates. All rights reserved. No part of this work may be reproduced or distributed without written permission of the copyright owner. The information contained in this report was gathered by Lee & Associates from sources believed to be reliable. Lee & Associates, however, makes no representation concerning the accuracy or completeness of such information and expressly disclaims any responsibility for any inaccuracy contained herein 3.16.18

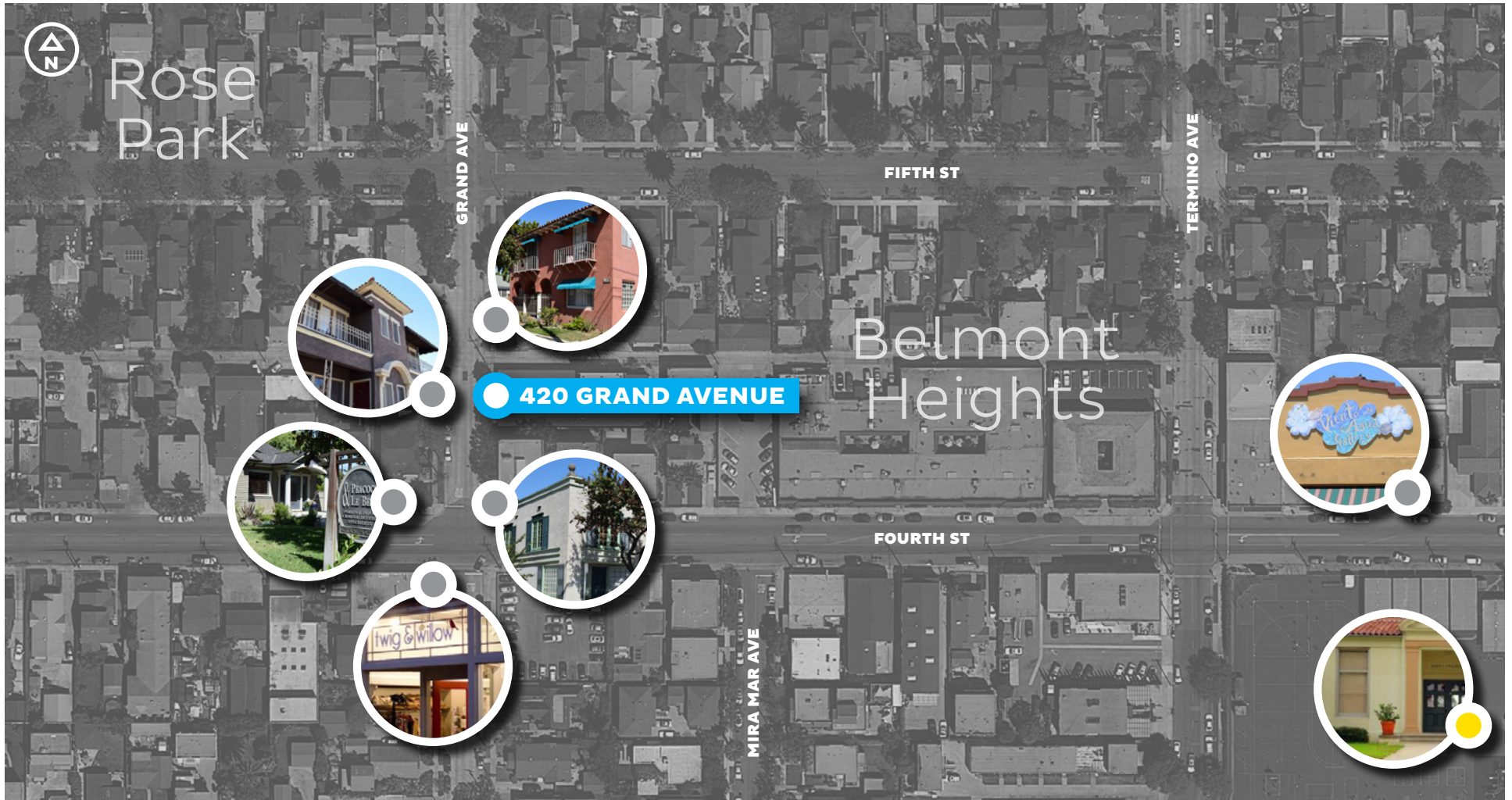
FOR MORE INFORMATION, PLEASE CONTACT:

YOUR LOCAL MARKET EXPERTS



Noel Aguirre
Principal | Lic ID# 01263417
PH: 562.354.2526
E: naguirre@leelalb.com

Sean Lieppman, CCIM
Senior Associate | Lic ID# 01905266
PH: 562.354.2528
E: slieppman@leelalb.com



SITE LOCATION



VICINITY HIGHLIGHTS



SCHOOLS + HOSPITALS

Copyright © Lee & Associates. All rights reserved. No part of this work may be reproduced or distributed without written permission of the copyright owner. The information contained in this report was gathered by Lee & Associates from sources believed to be reliable. Lee & Associates, however, makes no representation concerning the accuracy or completeness of such information and expressly disclaims any responsibility for any inaccuracy contained herein **3.16.18**

FOR MORE INFORMATION, PLEASE CONTACT:

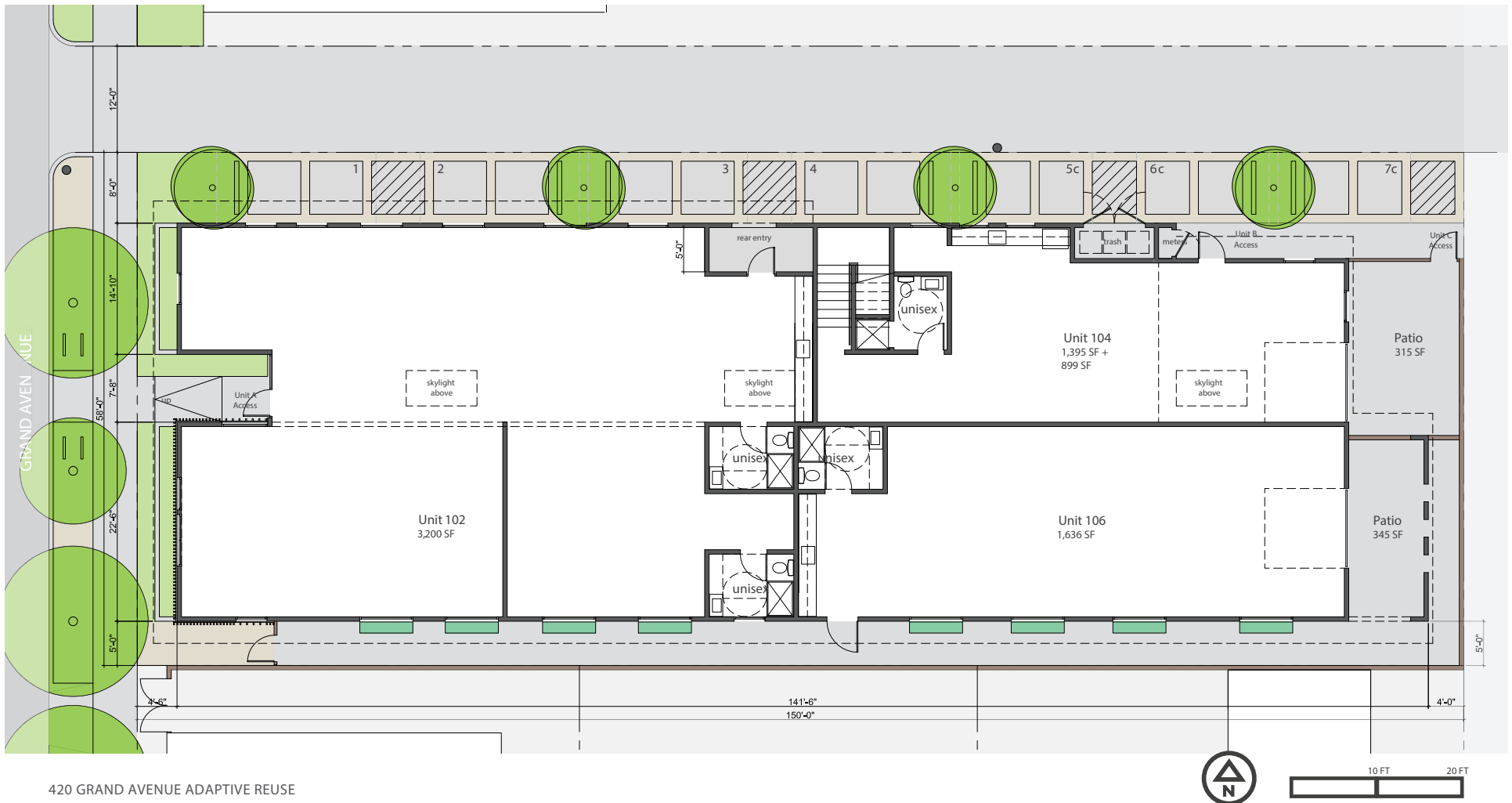
YOUR LOCAL MARKET EXPERTS



Noel Aguirre
Principal | Lic ID# 01263417
PH: 562.354.2526
E: naguirre@leelalb.com

Sean Lieppman, CCIM
Senior Associate | Lic ID# 01905266
PH: 562.354.2528
E: slieppman@leelalb.com

PROPOSED FIRST FLOOR PLAN



Copyright © Lee & Associates. All rights reserved. No part of this work may be reproduced or distributed without written permission of the copyright owner. The information contained in this report was gathered by Lee & Associates from sources believed to be reliable. Lee & Associates, however, makes no representation concerning the accuracy or completeness of such information and expressly disclaims any responsibility for any inaccuracy contained herein **3.16.18**

FOR MORE INFORMATION, PLEASE CONTACT:

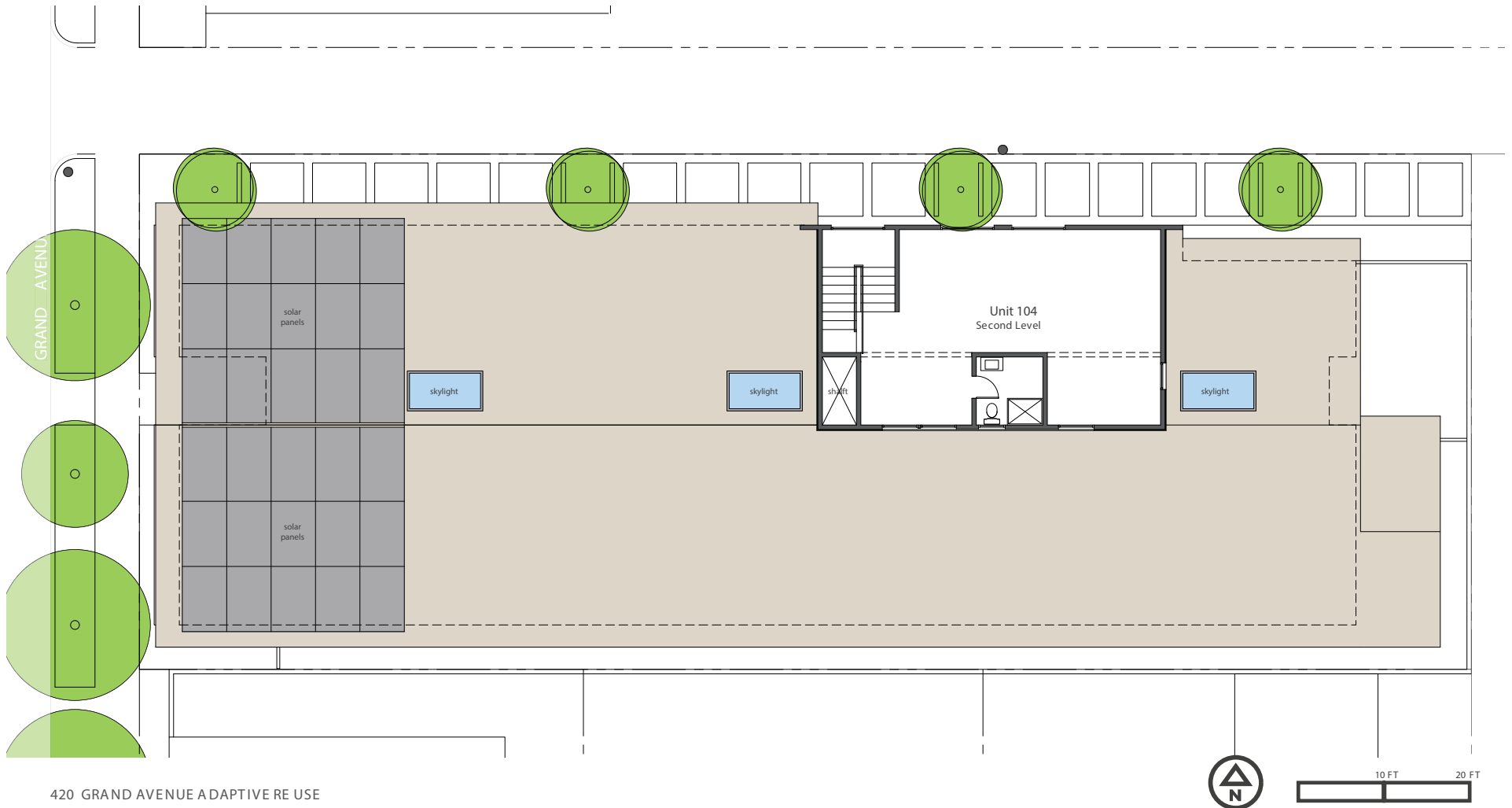
YOUR LOCAL MARKET EXPERTS



Noel Aguirre
Principal | Lic ID# 01263417
PH: 562.354.2526
E: naguirre@leelalb.com

Sean Lieppman, CCIM
Senior Associate | Lic ID# 01905266
PH: 562.354.2528
E: sleippman@leelalb.com

PROPOSED SECOND FLOOR PLAN



Copyright © Lee & Associates. All rights reserved. No part of this work may be reproduced or distributed without written permission of the copyright owner. The information contained in this report was gathered by Lee & Associates from sources believed to be reliable. Lee & Associates, however, makes no representation concerning the accuracy or completeness of such information and expressly disclaims any responsibility for any inaccuracy contained herein **3.16.18**

FOR MORE INFORMATION, PLEASE CONTACT:

YOUR LOCAL MARKET EXPERTS



Noel Aguirre
Principal | Lic ID# 01263417
PH: 562.354.2526
E: naguirre@leelalb.com

Sean Lieppman, CCIM
Senior Associate | Lic ID# 01905266
PH: 562.354.2528
E: slieppman@leelalb.com