

*Union* 222 *Square*  
STOCKTON



2,600 GROUND + 1,690 LOWER LEVEL

RARELY AVAILABLE UNION SQUARE LOCATION

# Features

- 2,600 SF on ground
- 1,690 SF Lower Level
- Prominent corner located on Union Square at the intersection of Maiden Lane and Stockton Street
- Over 100 feet of wraparound store frontage
- High volume foot traffic
- Recent full renovation
- Customer parking nearby
- Elite neighbors including Gucci, Moncler, Bvlgari, Neiman Marcus, Loro Piana, Louis Vuitton, Apple, and Chanel







Our Neighbors

Dior

VALENTINO



DITA

FENDI



DOLCE & GABBANA



MONT  
BLANC

BOTTEGA VENETA

BRUNELLO  
CUCINELLI

Neiman Marcus

MONCLER



Acne Studios



Van Cleef & Arpels

GUCCI  
The Gucci logo, featuring two interlocking 'G's.



SAINT LAURENT

TIFFANY & Co.

Ω  
OMEGA



Maison Margiela

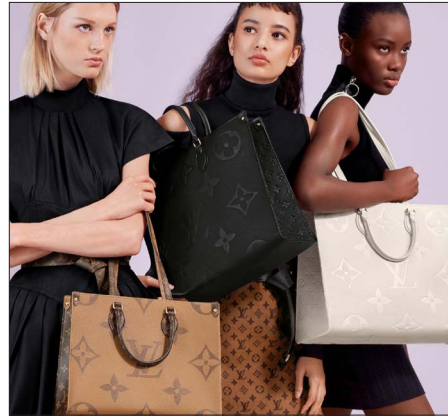
RIMOWA®

Cartier

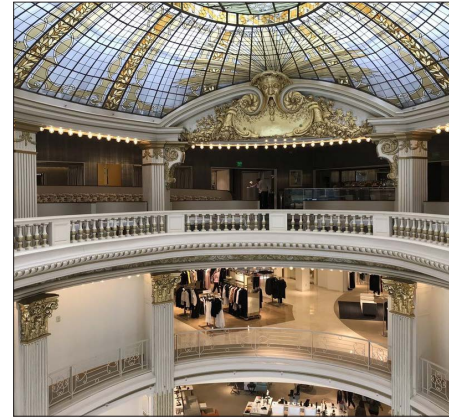




**TIFFANY & COCO**



**LOUIS VUITTON**



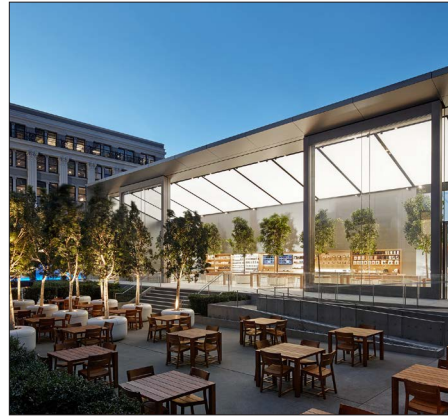
**NEIMAN MARCUS**



**VALENTINO**



**BOTTEGA VENETA**



**APPLE**



**ACNE STUDIOS**



**DOLCE&GABBANA**



**MAISON MARGIELA**



**GUCCI**



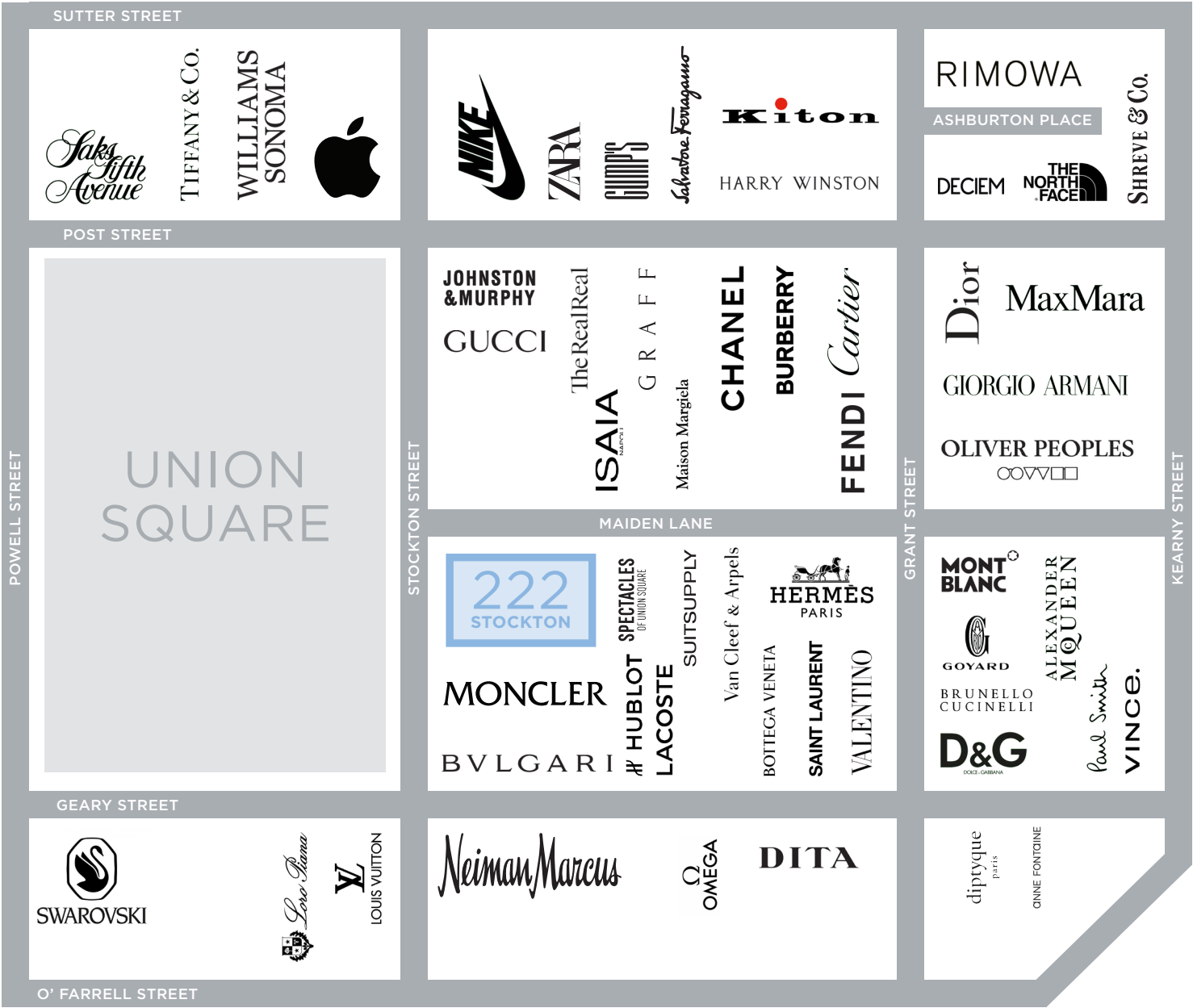
**MONCLER**



**BRUNELLO CUCINELLI**









maven  
RETAIL

**PAM MENDELSON**

office 415.404.6650

pam@mavenproperties.com

DRE #00953050

**222 STOCKTON — FOR LEASE**

NOTICE: This information has been secured from sources we believe to be reliable but we make no representations, warranties, express or implied, as to the accuracy of the information. Listing broker has been given enough information to provide only a preliminary interest in the property. The materials are not to be considered fact. The information contained herein is not a substitute for thorough due diligence investigation. References to square footage, zoning, use, or age are approximate. Please contact the San Francisco Planning Department to verify zoning at (415) 558-6378, as neither broker or landlord represent that this space is suitable for your use. Tenant or Buyer must verify the information at their own expense and bears all the risk for any inaccuracies. By receiving these materials you are agreeing to the disclaimers set forth herein. DRE#01878802

466 Green Street Suite #203 | San Francisco, CA 94133 | 415-781-7700 | [www.mavenproperties.com](http://www.mavenproperties.com)