

2352 MAIN STREET CONCORD, MA

Make a right onto Knox Trail; continue for 0.3 miles.

CONCORD OFFICE CENTER

12,145 SF AVAILABLE



PROPERTY SUMMARY/SPECIFICATIONS

SUMMARY

Three-story office building on the banks of the Assabet River conveniently located just off Route 62 and is minutes from I-495, Route 2 and route 65. great spaces available for professional offices and service businesses. Fitness room, break room, new EV charging station and parking for 190 on 6 wooded acres with a pond.



SUITE 104

. 2,768 SF



SUITE 208

. 3,388 SF | SUBDIVIDABLE



SUITE 303

. 2,302 SF

SUITE 305

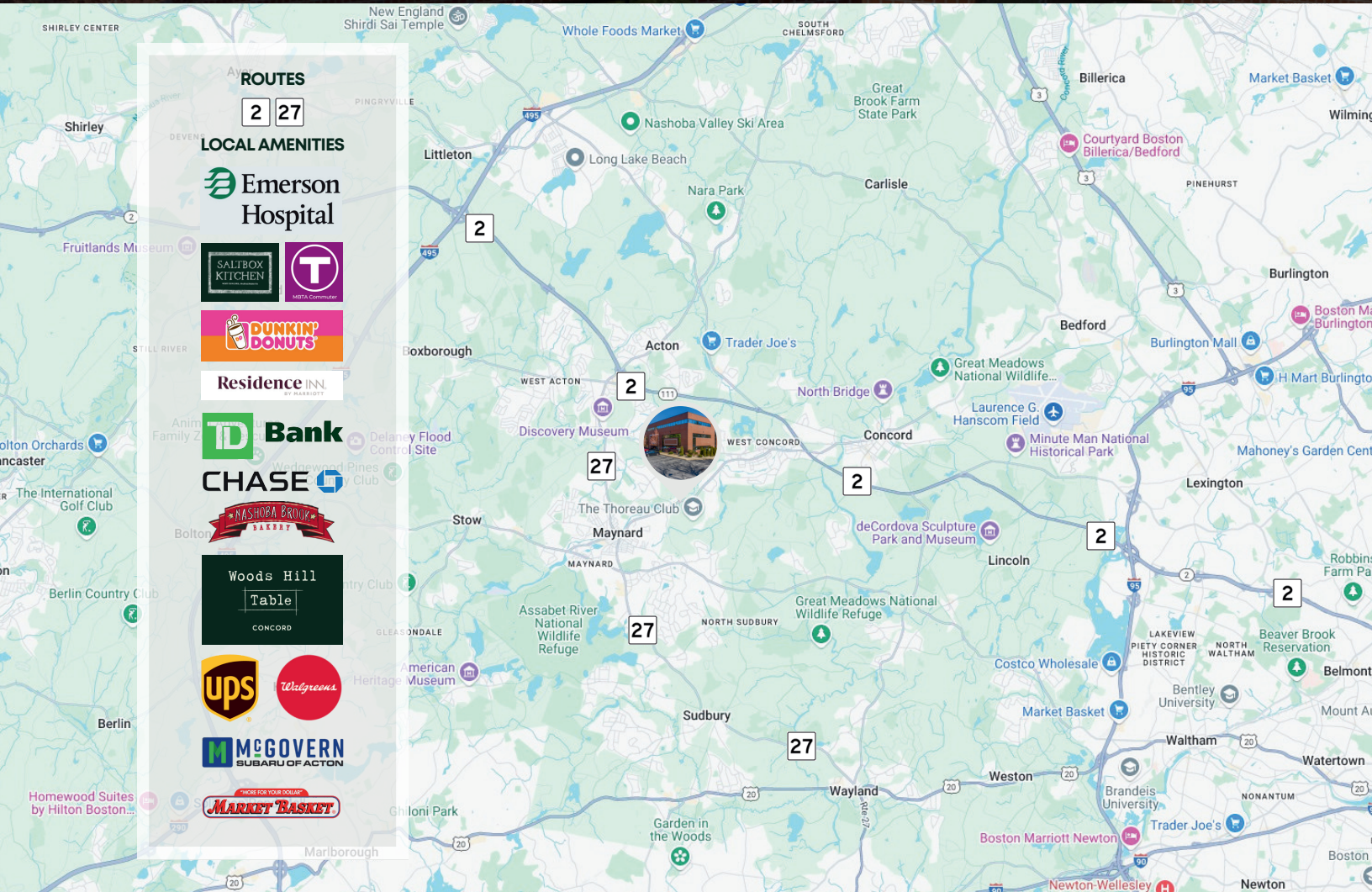
. 3,687 SF | SUBDIVIDABLE

SPECIFICATIONS

- Year Built: 1988
- Total Size: 44,286 SF
- Land: 6 AC
- Zone: Business
- Levels: 3 Stories
- Parking: 190 Spaces
- Elevators: 1

- Lavatories: 2/Per Floor
- HVAC: New Air to Air
- Construction: Steel/Brick
- Fire Suppression: Wet
- Fitness Room
- Break Room
- Showers

THE PROPERTY/LOCATION



12,145 SF OF OFFICE SPACE AVAILABLE IN CONCORD, MA 01742

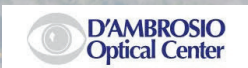
2352 MAIN STREET

CONCORD, MA

Make a right onto Knox Trail; continue for 0.3 miles.

CONCORD OFFICE CENTER

12,145 SF AVAILABLE



POWDER MILL PLAZA

2352 MAIN STREET



COMMERCIAL
O'BRIEN
PROPERTIES, INC

KEITH GURTLER
SENIOR CONSULTANT

978.346.3098
keith@obriencommercial.com