

PREMIER COMMERCIAL

REAL ESTATE SERVICES

Douglas C. Wise - Broker

**FULLY EQUIPPED
RESTAURANT
NOW LEASING
SUITE A**

**STATE ON CAMPUS
MORGANTOWN, WV**

WWW.PREMIERCOMMERCIALRES.COM

2,037 SF OF SPACE AVAILABLE

331 BEECHURST AVE.

HIGHLIGHTS:

- The space is a turnkey restaurant opportunity, fully built-out and equipped.
- Ground floor retail opportunity, steps away from West Virginia University
- Strong visibility with heavy vehicle and foot traffic throughout the day.
- End cap space available with designated patio for outdoor seating
- Convenient, integral garage parking for retail and restaurant

SUITE A

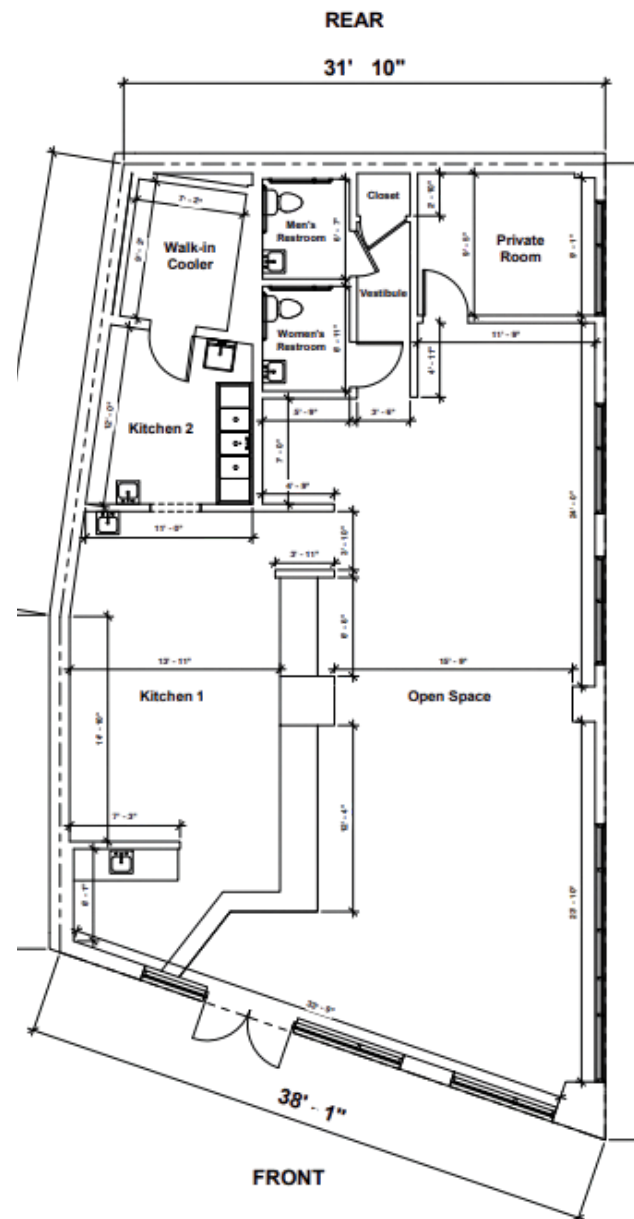


STATE ON CAMPUS
331 BEECHURST AVE.

**LAUNCH YOUR CONCEPT FAST WITH THIS FULLY
EQUIPPED, TURNKEY RESTAURANT SPACE!**

STATE ON CAMPUS | 331 BEECHURST AVE. MORGANTOWN, WV 26505

STATE ON CAMPUS (SUITE A) - FLOOR PLAN



Unit A Ground Floor 2,037 SF

Gross footage was measured on-site and adheres to BOMA standards.

Width
38' 1"

Depth
64' 7"

Revisions

Floor Plan

Prepared 09/02/2022

Unit A

EXTERIOR PHOTO



INTERIOR PHOTOS



INTERIOR PHOTOS



PREMIER COMMERCIAL

REAL ESTATE SERVICES

Douglas C. Wise - Broker

INQUIRE TODAY!

304.777.4050

PremierCommercialRES.com