



Keegan & Coppin
COMPANY, INC.

FOR LEASE

1320 19TH HOLE DRIVE, SUITE 205
WINDSOR, CA

**PREMIER GOLF COURSE
OFFICE SPACE**



Go beyond broker.

PRESENTED BY:

SHAWN JOHNSON, MANAGING PARTNER / SIOR
LIC # 00835502 (707) 528-1400, EXT 238
SJOHNSON@KEEGANCOPPIN.COM



PROPERTY DETAILS



1320 19TH HOLE DRIVE, SUITE 205
WINDSOR, CA

**PREMIER GOLF
COURSE OFFICE SPACE
FOR LEASE**

PROPERTY INFORMATION

HIGHLIGHTS

- 1,159+/- SF, 2nd Floor Office Space Available
- 2 Private Offices (or 1 Private & 1 Conference Room), Reception & Open Area
- Architecturally Designed 2-story Restaurant, Offices & Club House
- Conveniently Located with Ample Free Parking

DESCRIPTION OF PREMISES

The available space is located above Charlie's Grill at the Windsor Golf Course.

LEASE TERMS

Rate

\$2.15 per sq ft

Terms

Modified Full Service

Tenant to pay directly for janitorial for the premises



PRESENTED BY: SHAWN JOHNSON, MANAGING PARTNER / SIOR
KEEGAN & COPPIN CO., INC.
LIC # 00835502 (707) 528-1400, EXT 238
SJOHNSON@KEEGANCOPPIN.COM

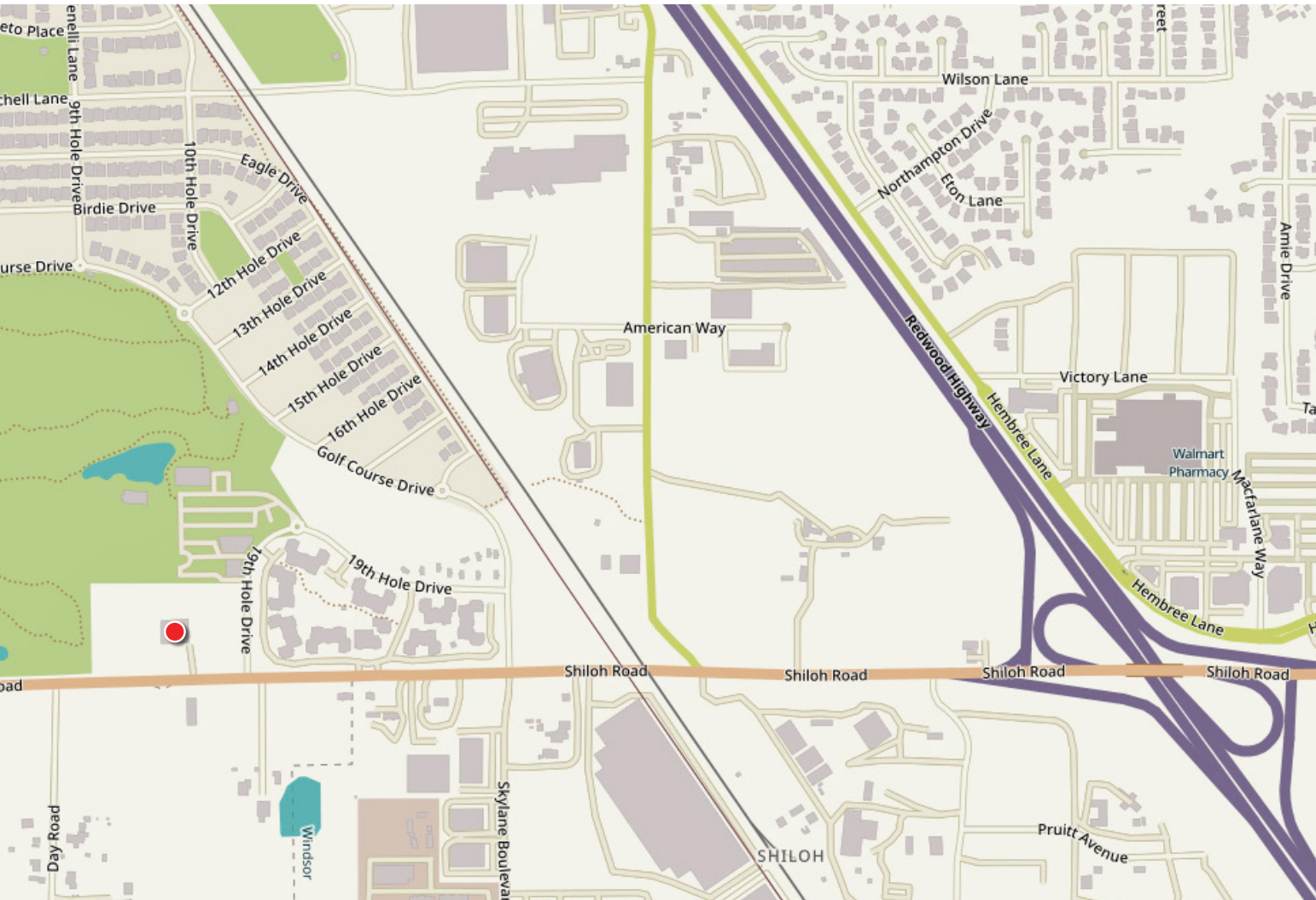


LOCATION DESCRIPTION



1320 19TH HOLE DRIVE, SUITE 205
WINDSOR, CA

**PREMIER GOLF
COURSE OFFICE SPACE
FOR LEASE**



DRIVING DISTANCE

AIRPORT 7 MINS

DOWNTOWN
SANTA ROSA 20 MINS

PETALUMA 33 MINS

NAPA 1 HR

SAN FRANCISCO 1 HR

BY AIR

LOS ANGELES 1 1/2 HRS

PHOENIX 2 HRS

PORTLAND 2 HRS

SAN DIEGO 1 3/4 HRS

SEATTLE 2 HRS

DENVER 2 HRS

PRESENTED BY: SHAWN JOHNSON, MANAGING PARTNER / SIOR
KEEGAN & COPPIN CO., INC.
LIC # 00835502 (707) 528-1400, EXT 238
SJOHNSON@KEEGANCOPPIN.COM

The above information, while not guaranteed, has been secured from sources we believe to be reliable. Submitted subject to error, change or withdrawal. An interested party should verify the status of the property and the information herein.

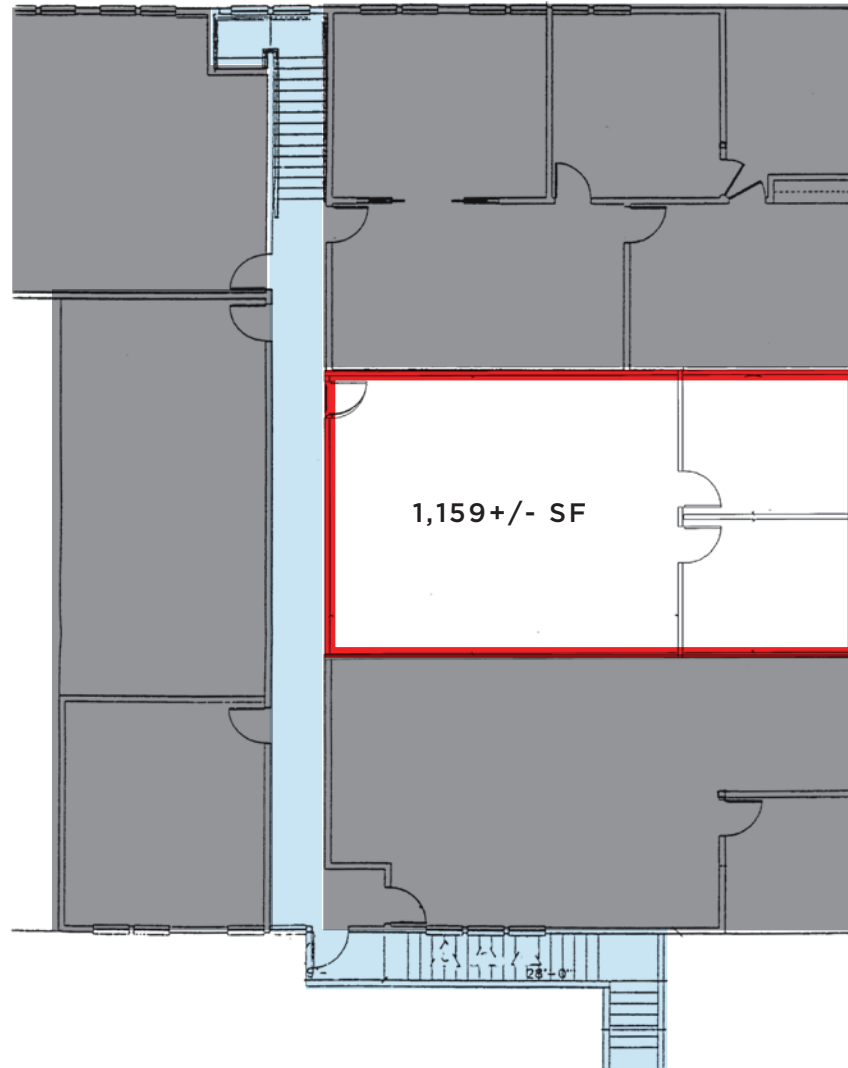





FLOOR PLAN



1320 19TH HOLE DRIVE, SUITE 205
WINDSOR, CA

**PREMIER GOLF
COURSE OFFICE SPACE
FOR LEASE**



-  AVAILABLE
-  COMMON AREA
-  NOT AVAILABLE

PRESENTED BY: SHAWN JOHNSON, MANAGING PARTNER / SIOR
KEEGAN & COPPIN CO., INC.
LIC # 00835502 (707) 528-1400, EXT 238
SJOHNSON@KEEGANCOPPIN.COM

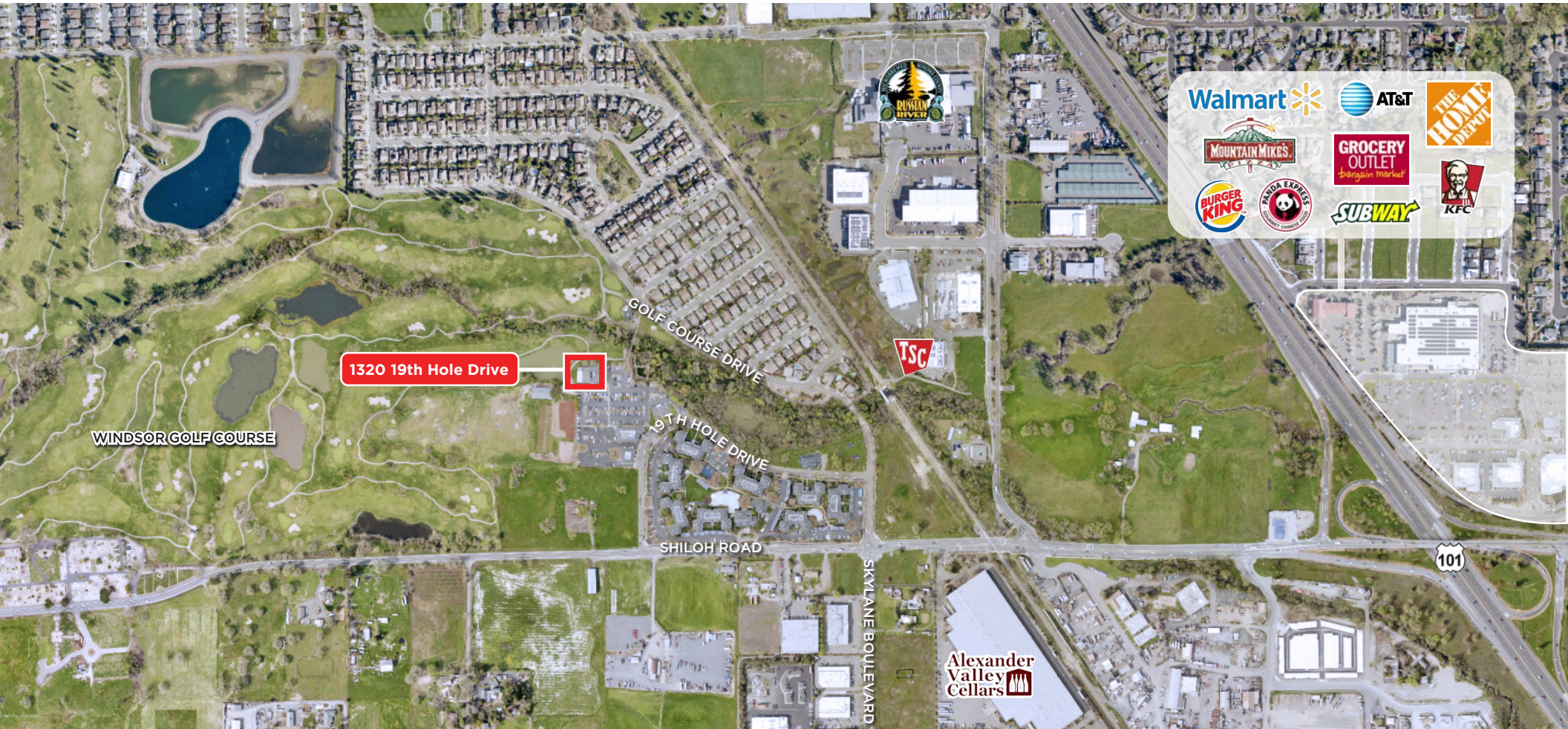


VICINITY MAP



1320 19TH HOLE DRIVE, SUITE 205
WINDSOR, CA

**PREMIER GOLF
COURSE OFFICE SPACE
FOR LEASE**



Keegan & Coppin Co., Inc.
1355 North Dutton Avenue
Santa Rosa, CA 95401
www.keegancoppin.com
(707) 528-1400

The above information, while not guaranteed, has been secured from sources we believe to be reliable. Submitted subject to error, change or withdrawal. An interested party should verify the status of the property and the information herein.

REPRESENTED BY:

SHAWN JOHNSON
MANAGING PARTNER / SIOR
LIC # 00835502 (707) 528-1400, EXT 238
SJOHNSON@KEEGANCOPPIN.COM