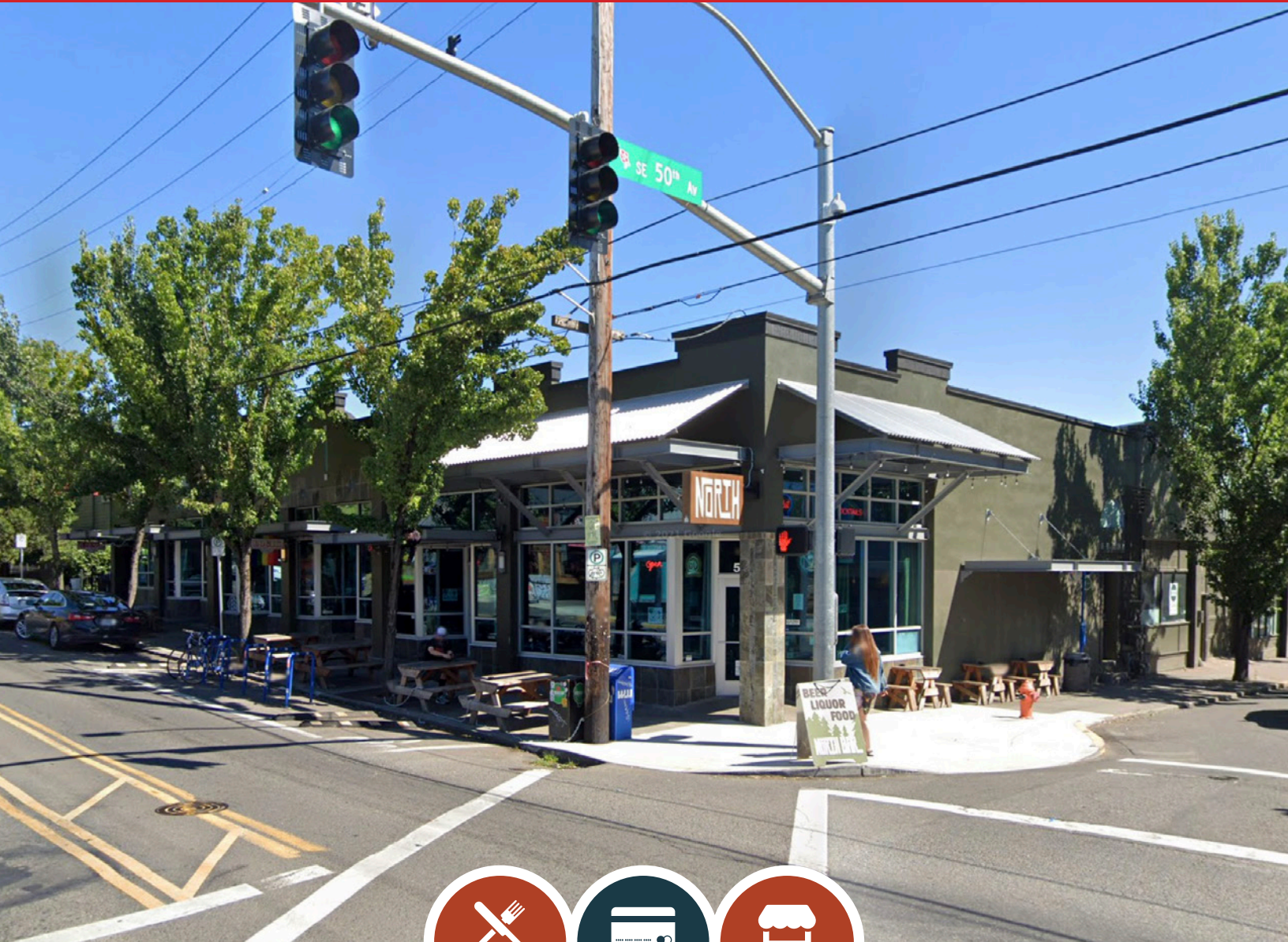


FOR SALE

URBAN
WORKS

PLEASE DO NOT DISTURB CURRENT TENANTS



5008-5022 SE DIVISION ST

RETAIL CENTER IN BUSY RICHMOND NEIGHBORHOOD

DAN BOZICH | 503.228.3135
dbozich@urbanworksrealestate.com

KIA HARTLEY | 503.228.3209
khartley@urbanworksrealestate.com

urbanworksrealestate.com

5008-5022 SE DIVISION ST



PLEASE DO NOT DISTURB CURRENT TENANTS



Retail Spaces fronting SE Division St

- Address** 5008-5022 SE Division St
- Neighborhood** Richmond / Inner SE Portland
- Year Built** 1926
- Lot Size** .23 AC
- Building Size** 10,000 SF
- Zoning** CM2d (MU-U)
- Availability** XX% Leased (4/5 Tenants)
Current Tenant leases expiring in the next 3 to 5 years.
Rent Roll available upon request
- Sale Price** Call for Pricing



Division Street looking West

About the Space

Opportunity to purchase retail center with excellent visibility and access to SE Division St. The building sits on the corner of SE 50th Ave & SE Division St, across from Green Zebra Grocery, Division Street Station Apartments (127 Units), and less than a 10 minute walk from Franklin High School.



SITE PLAN



SE 50TH Ave

SE Division St



13K ADT THRU INTERSECTION

NEIGHBORHOOD



Demographics	¼ Mile	½ Mile	1 Mile
2023 Population	2,666	8,323	29,629
Total Employees	521	1,817	8,339
Total Businesses	115	379	1,787
Median Household Income	\$103,583	\$117,840	\$104,927
Median Age	36.8	37.4	37.5
Any College	87.7%	88.7%	87.1%



Stumptown



Petite Provence



Olympia Provisions



Landmark Saloon



Good Coffee



Tea Bar

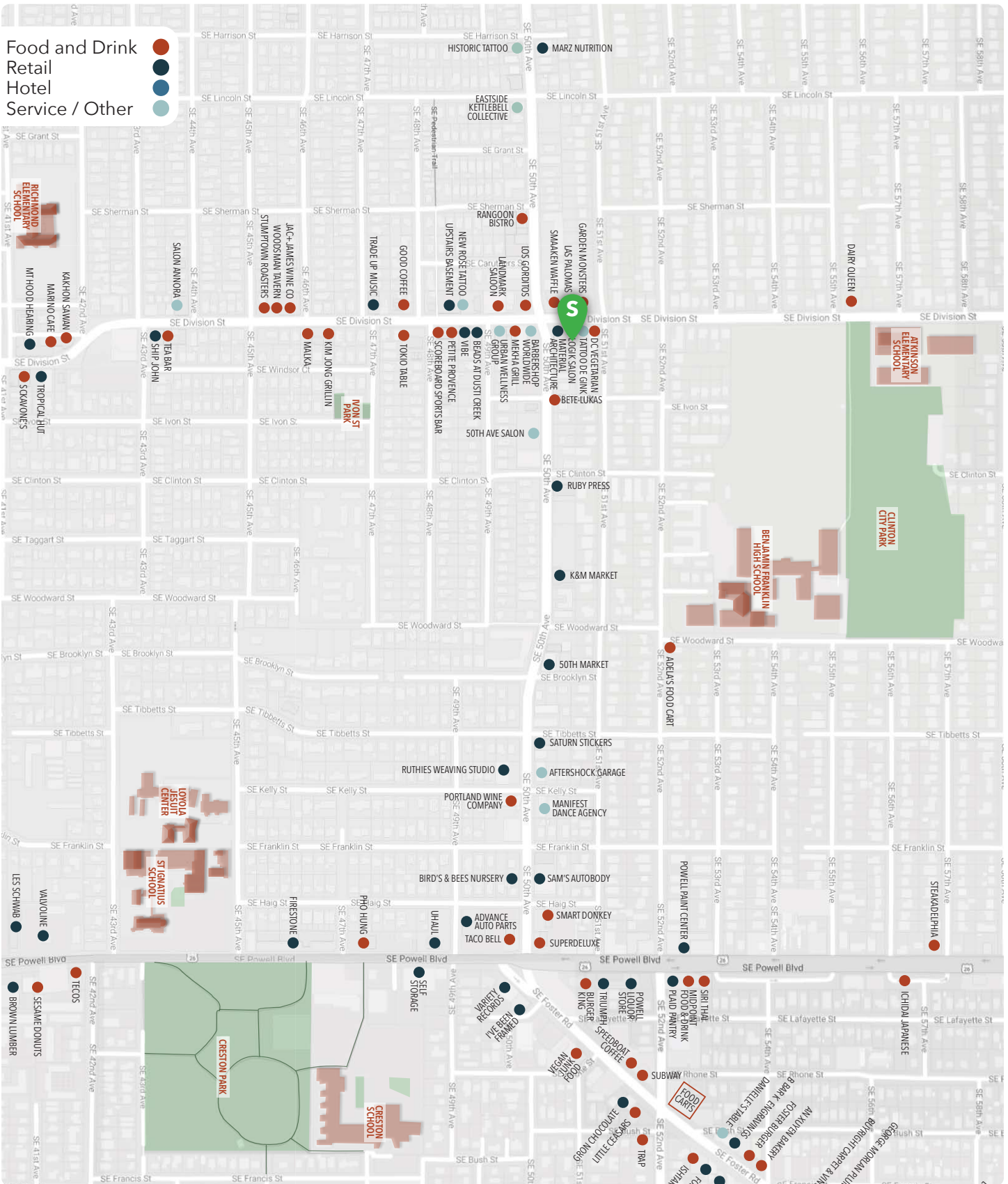


Por Que No

RETAIL MAP



- Food and Drink ●
- Retail ●
- Hotel ●
- Service / Other ●



INFORMATION CONTAINED HEREIN IS FROM SOURCES DEEMED RELIABLE, BUT NOT GUARANTEED.