

**SPACE AVAILABLE  
FOR LEASE  
NORTHRIDGE, CA**

**9301 TAMPA AVE**



**PROPERTY INFORMATION**

**SPACE AVAILABLE:** 61,604 SF (LOCATED ON 1<sup>ST</sup> FLOOR)

**FEATURES:**

- PART OF NORTHRIDGE FASHION CENTER
- ADJACENT TO MULTI-STORY PARKING CENTERSPACE
- CAN DIVIDE WITH MALL ENTRY

**DEMOGRAPHICS**

**2015 ESTIMATED POPULATION**

1 Mile: 18,771  
3 Mile: 207,401  
5 Mile: 486,572

**2015 ESTIMATED AVG. HH INCOME**

1 Mile: \$97,556  
3 Mile: \$87,893  
5 Mile: \$87,456

**2015 ESTIMATED TRAFFIC COUNTS**

41,609 CPD - TAMPA AVE  
33,121 CPD - NORDOFF ST  
30,682 CPD - PLUMMER ST



**Carol Springstead** CA BRE #01802067

[cspringstead@Springstead-associates.com](mailto:cspringstead@Springstead-associates.com)

**Tami Torrez** CA BRE #01965777

[ttorrez@Springstead-associates.com](mailto:ttorrez@Springstead-associates.com)



**SPRINGSTEAD & ASSOCIATES, INC.**

3300 IRVINE AVE. STE 250

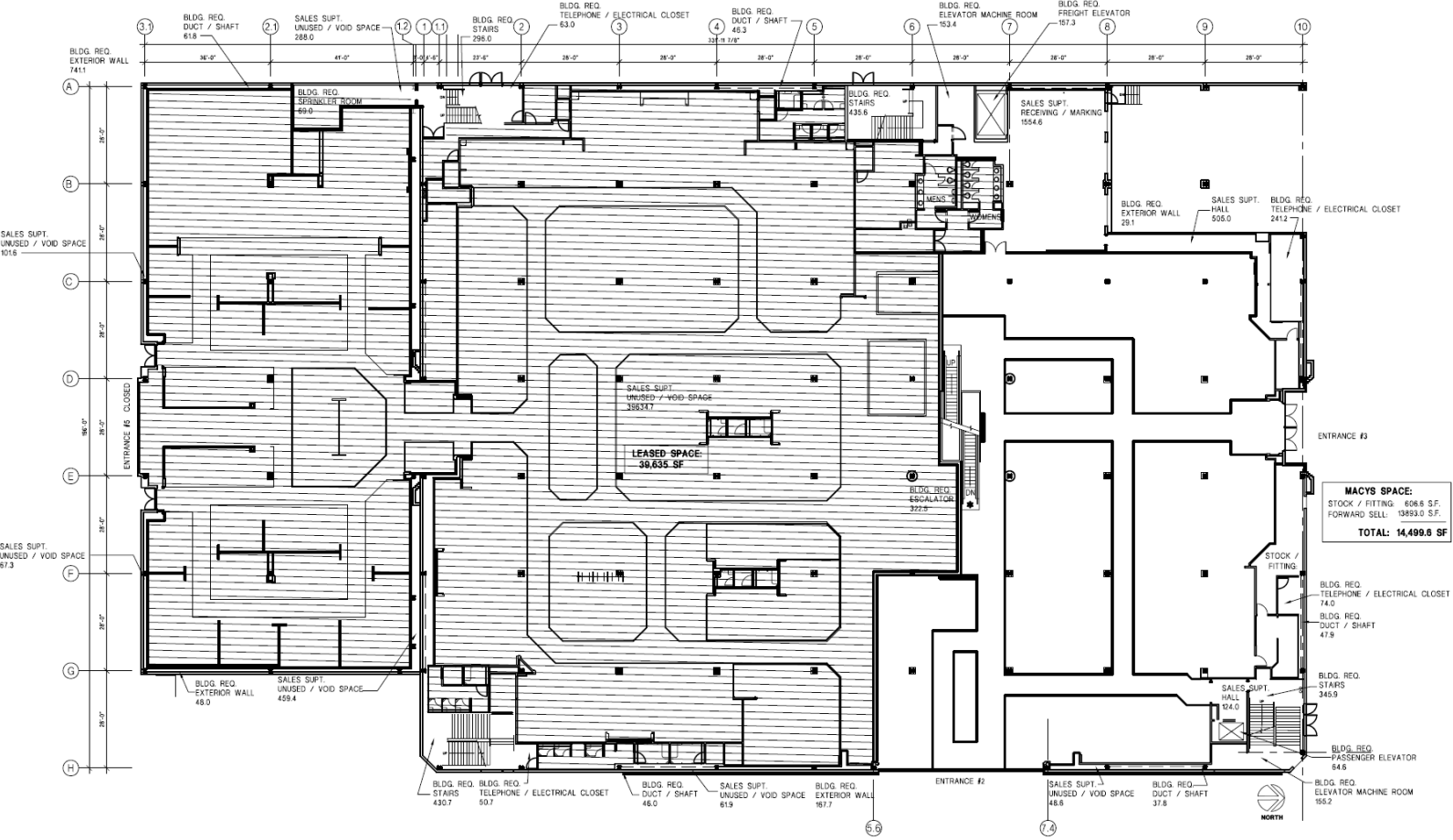
NEWPORT BEACH, CA 92660

P: 949-797-9040 F: 949-797-9041

[WWW.SPRINGSTEAD-ASSOCIATES.COM](http://WWW.SPRINGSTEAD-ASSOCIATES.COM)

**SPACE AVAILABLE  
FOR LEASE  
NORTHRIDGE, CA**

**9301 TAMPA AVE**



**FOR MORE INFORMATION CONTACT**

**Carol Springstead (CA BRE #01082067)**

**Tami Torrez (CA BRE #0165777)**

[cspringstead@springstead-associates.com](mailto:cspringstead@springstead-associates.com)

[ttorrez@springstead-associates.com](mailto:ttorrez@springstead-associates.com)



**SPRINGSTEAD & ASSOCIATES, INC.**

**3300 IRVINE AVE. STE 250**

**NEWPORT BEACH, CA 92660**

**P: 949-797-9040 F: 949-797-9041**

**WWW.SPRINGSTEAD-ASSOCIATES.COM**

