

1025 W HUDSON RD, ROGERS, ARKANSAS

# ±4.71 ACRES FOR SALE

Hudson Rd: 31K VPD

62

**CLINTON BENNETT**  
CO-MANAGING DIRECTOR  
479.200.3457  
CLINTON@FOCUSCREGROUP.COM

**FOCUS**  
COMMERCIAL REAL ESTATE

**PALMER HAYS**, SIOR MEMBER ASSOCIATE  
PRINCIPAL | INDUSTRIAL SPECIALIST  
479.466.8499  
PALMER@FOCUSCREGROUP.COM





## EXECUTIVE SUMMARY

1025 W Hudson Rd offers  $\pm 4.71$  acres of strategically located commercial land in the heart of Rogers, Arkansas. Positioned along Hudson Road with  $\pm 31,000$  vehicles per day and surrounded by established commercial and industrial users—including Walmart Distribution—the property provides exceptional visibility, access, and development flexibility.

Zoned T5.2, the site is well suited for a range of commercial, flex, retail, and service-oriented uses, and sits just 3 miles from Interstate-49—placing it within minutes of the region's most active industrial and corporate corridors. With strong surrounding growth, immediate transportation connectivity, and one of the most central locations in Rogers, this tract represents a prime opportunity for an owner-user, developer, or investor seeking a well-positioned development site.

1025 W HUDSON RD, ROGERS, AR

## PROPERTY HIGHLIGHTS

**$\pm 4.71$  ACRES**  
AVAILABLE

**\$1,495,000**  
ASKING PRICE

**\$7.29**  
PRICE PER SF

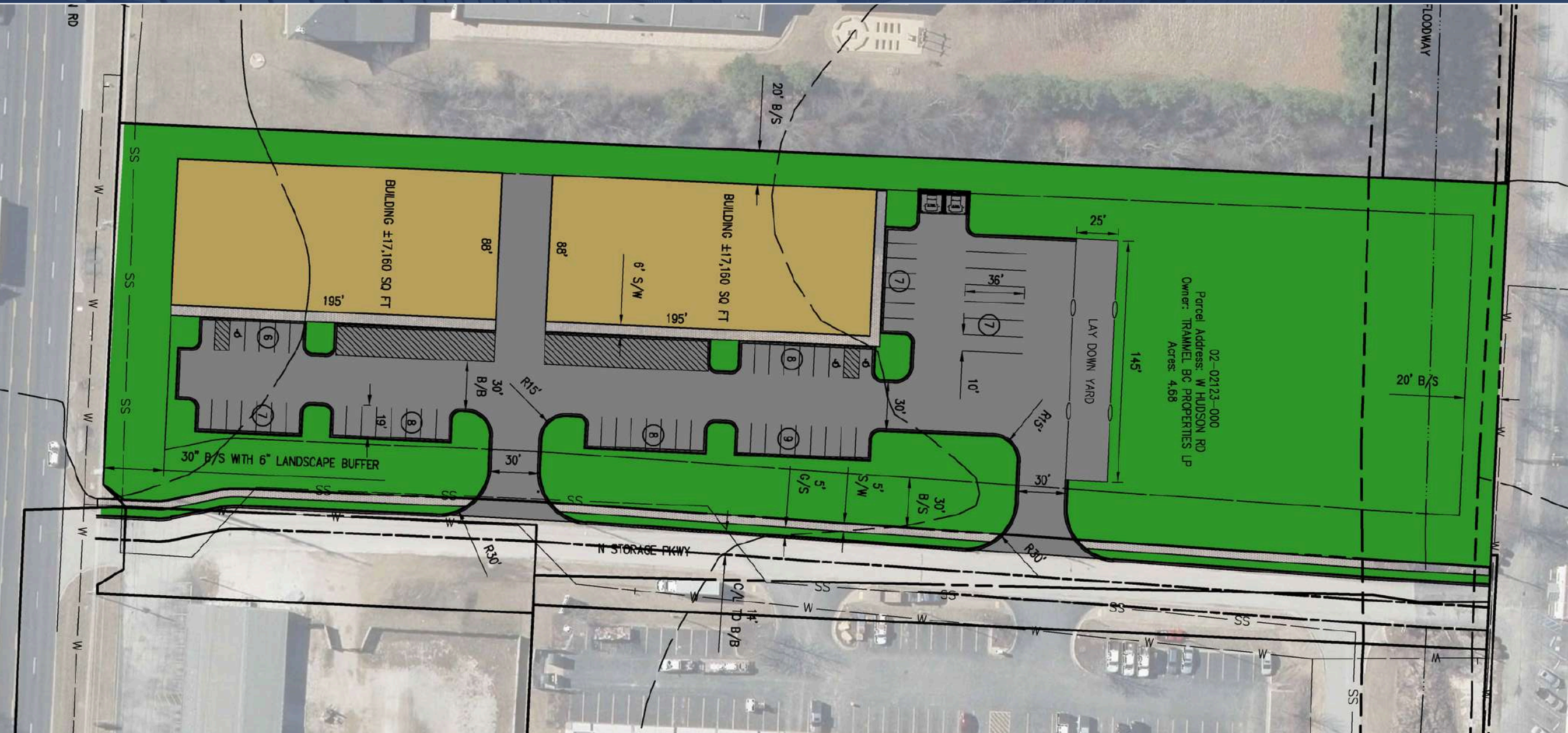
**\$317,626**  
PER ACRE

**T5.2**  
ZONING

**3 MILE DRIVE**  
DISTANCE TO I-49



# SITE CONCEPT



1025 W HUDSON RD, ROGERS, AR

**PALMER HAYS** SIOR MEMBER ASSOCIATE  
PRINCIPAL | INDUSTRIAL SPECIALIST  
479.466.8499  
PALMER@FOCUSCREGROUP.COM

**CLINTON BENNETT** SIOR, CCIM  
CO-MANAGING DIRECTOR  
479.200.3457  
CLINTON@FOCUSCREGROUP.COM

**FOCUS**  
COMMERCIAL REAL ESTATE



# ALTA SURVEY



1025 W HUDSON RD, ROGERS, AR

**PALMER HAYS** SIOR MEMBER ASSOCIATE  
PRINCIPAL | INDUSTRIAL SPECIALIST  
479.466.8499  
PALMER@FOCUSCREGROUP.COM

**CLINTON BENNETT** SIOR, CCIM  
CO-MANAGING DIRECTOR  
479.200.3457  
CLINTON@FOCUSCREGROUP.COM

**FOCUS**  
COMMERCIAL REAL ESTATE



# AERIAL VIEW



1025 W HUDSON RD, ROGERS, AR

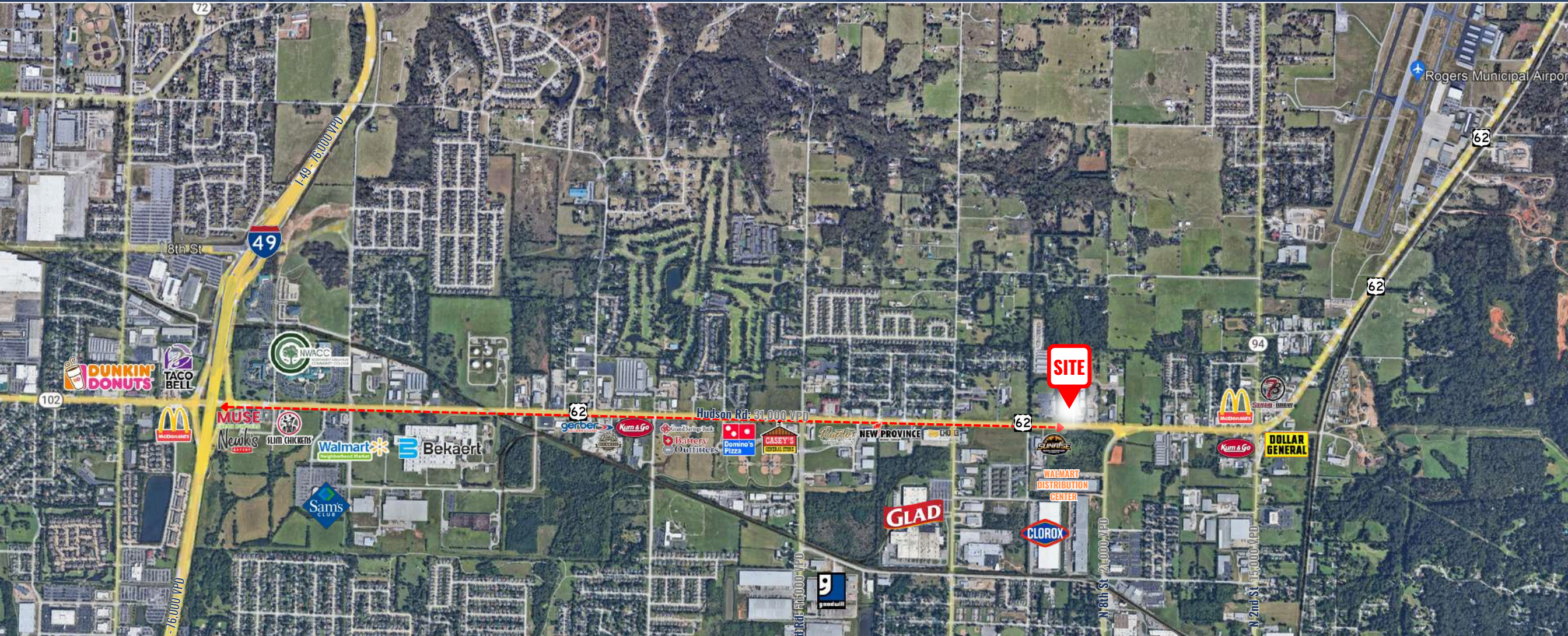
**PALMER HAYS**, SIOR MEMBER ASSOCIATE  
PRINCIPAL | INDUSTRIAL SPECIALIST  
479.466.8499  
PALMER@FOCUSCREGROUP.COM

**CLINTON BENNETT**, SIOR, CCIM  
CO-MANAGING DIRECTOR  
479.200.3457  
CLINTON@FOCUSCREGROUP.COM

**FOCUS**  
COMMERCIAL REAL ESTATE



# AERIAL MAP VIEW



## INTERSTATE-49

3 MILES 6 MIN

## HWY 62

0 MILES 0 MIN

## HWY 71-B

0.3 MILES 1 MIN

## WALMART HOME OFFICE CAMPUS

4.0 MILES 9 MIN

1025 W HUDSON RD, ROGERS, AR

**PALMER HAYS**, SIOR MEMBER ASSOCIATE  
PRINCIPAL | INDUSTRIAL SPECIALIST  
479.466.8499  
PALMER@FOCUSCREGROUP.COM

**CLINTON BENNETT**, SIOR, CCIM  
CO-MANAGING DIRECTOR  
479.200.3457  
CLINTON@FOCUSCREGROUP.COM

**FOCUS**  
COMMERCIAL REAL ESTATE



# AERIAL MAP VIEW



**3** MINUTE DRIVE  
**5** MINUTE DRIVE  
**10** MINUTE DRIVE

1025 W HUDSON RD, ROGERS, AR

**PALMER HAYS**, SIOR MEMBER ASSOCIATE  
PRINCIPAL | INDUSTRIAL SPECIALIST  
479.466.8499  
PALMER@FOCUSCREGROUP.COM

**WILL JARRATT**  
INDUSTRIAL SPECIALIST  
901.573.0819  
WILL@FOCUSCREGROUP.COM

**FOCUS**  
COMMERCIAL REAL ESTATE



**CLINTON BENNETT**  
CO-MANAGING DIRECTOR  
479.200.3457  
CLINTON@FOCUSCREGROUP.COM



# FOCUS

## COMMERCIAL REAL ESTATE

**PALMER HAYS**, SIOR MEMBER ASSOCIATE  
PRINCIPAL | INDUSTRIAL SPECIALIST  
479.466.8499  
PALMER@FOCUSCREGROUP.COM

**WE FOCUS ON REAL RESULTS FOR OUR CLIENTS**

5512 WEST WALSH LN, #201, ROGERS, AR 72758 | 479.254.7000 | FOCUSCREGROUP.COM