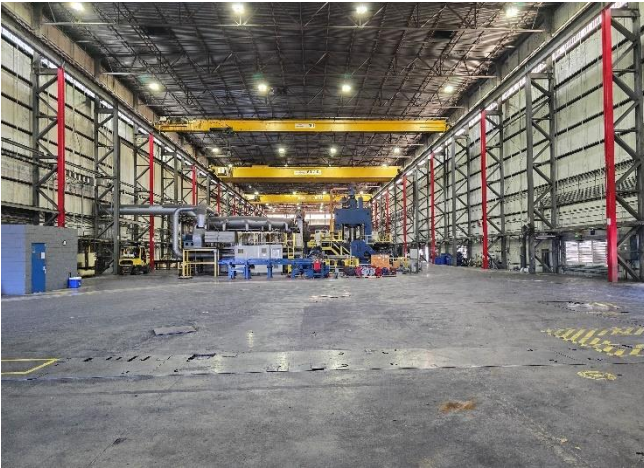


# For Sale 202,000 Sq. Ft. Crane Served Manufacturing Facility



**1001 Schulz Blvd. Robinsonville, MS 38664**



## **Property Features:**

Total Sq. Ft:	202,000 Sq. Ft.
Manufacturing/Assembly:	186,000 Sq. Ft.
Total Office:	16,000 Sq. Ft.
Dock Doors:	1 (expandable)
Grade Door:	9 (16'x14')
Ceiling Clear:	24' – 47' (under crane)
Sprinklers:	Wet
Electricity:	3 Phase, 480V 4,000 amp
Built:	2012

## **Miscellaneous:**

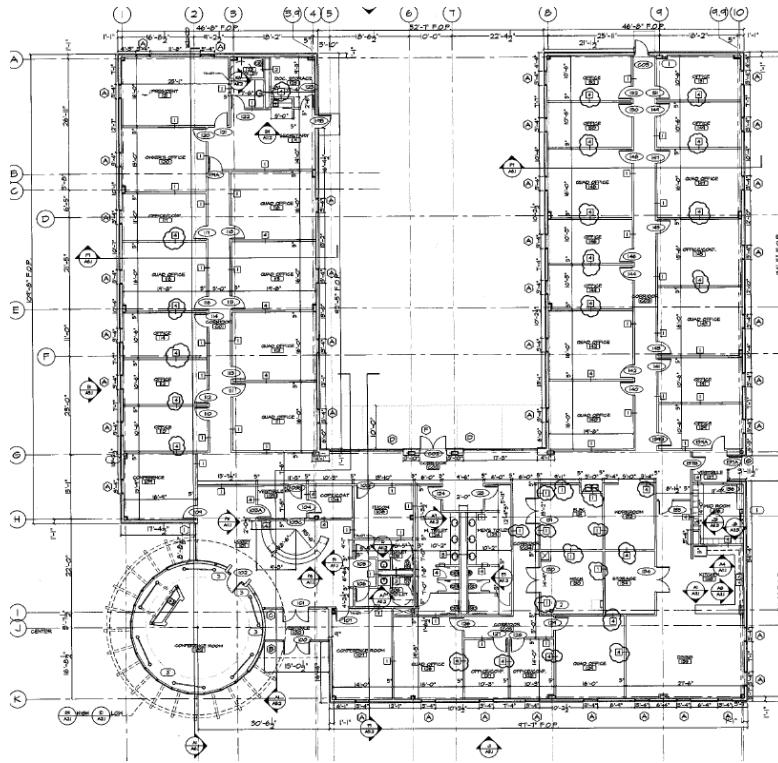
- Facility situated on 100 Acres.
- 2.5 Acres Drop lot; Can further expand
- Fully crane served, two 50/10-ton & One 10 ton cranes the high bay; Six 10-ton cranes in the low bay
- Fully fenced; Driveways around the facility
- Controlled access with truck scale in place
- Separate office building with 30 private offices, two conference rooms, & breakroom

# Memphis Commercial & Industrial

## *Exclusive Agent*

3885 S. Perkins Rd Suite 12  
Memphis, TN 38118  
Phone 901-375-4300  
Fax 901-375-9689

Ed Larkin:	Ed@memphisci.com
Cell:	(901)-351-3961
Stefan Feick:	Stefan@memphisci.com
Cell:	(901)-415-9812



**Office Building**



**Warehouse/Manufacturing Building**

