

# OFFICE / WAREHOUSE

BIZ PARK 29

3801, 3871, 3883, 3887 E UNIVERSITY GEORGETOWN, TX



BIZ PARK 29  
A Premier  
Office/Warehouse  
Facility Located  
Conveniently near  
I30 & FM29 Less Than 2  
Miles from IH35

## GEORGETOWN

- Grade High & Dock Level Doors
- HVAC Office Space
- 16-20' Ceiling Height
- 1500 – 8300 SF Available
- 1 clock from Confluence of I30 & FM 29
- Within Minutes of IH 35 & Downtown Georgetown

Tawney Stedman  
Capella Commercial, LLC  
[tawney@capellatx.com](mailto:tawney@capellatx.com)



## CAPELLA COMMERCIAL LLC

The information contained herein was obtained from sources deemed reliable; however, no guarantees, warranties or representations as to the completeness or accuracy thereof. The presentation of this real estate information is subject to errors; omissions; change of price; prior sale or lease; or withdrawal without notice.

# BIZ PARK 29, GEORGETOWN, TX



Bldg 8, S. 165 | 3871 | 1820 SF | 100% HVAC | \$12 psf nnn

Bldg 9, S. 106 | 3875 | 5000 SF Full Buildout, private offices, conference kitchen, showroom | 100% HVAC | \$12.15 psf nnn

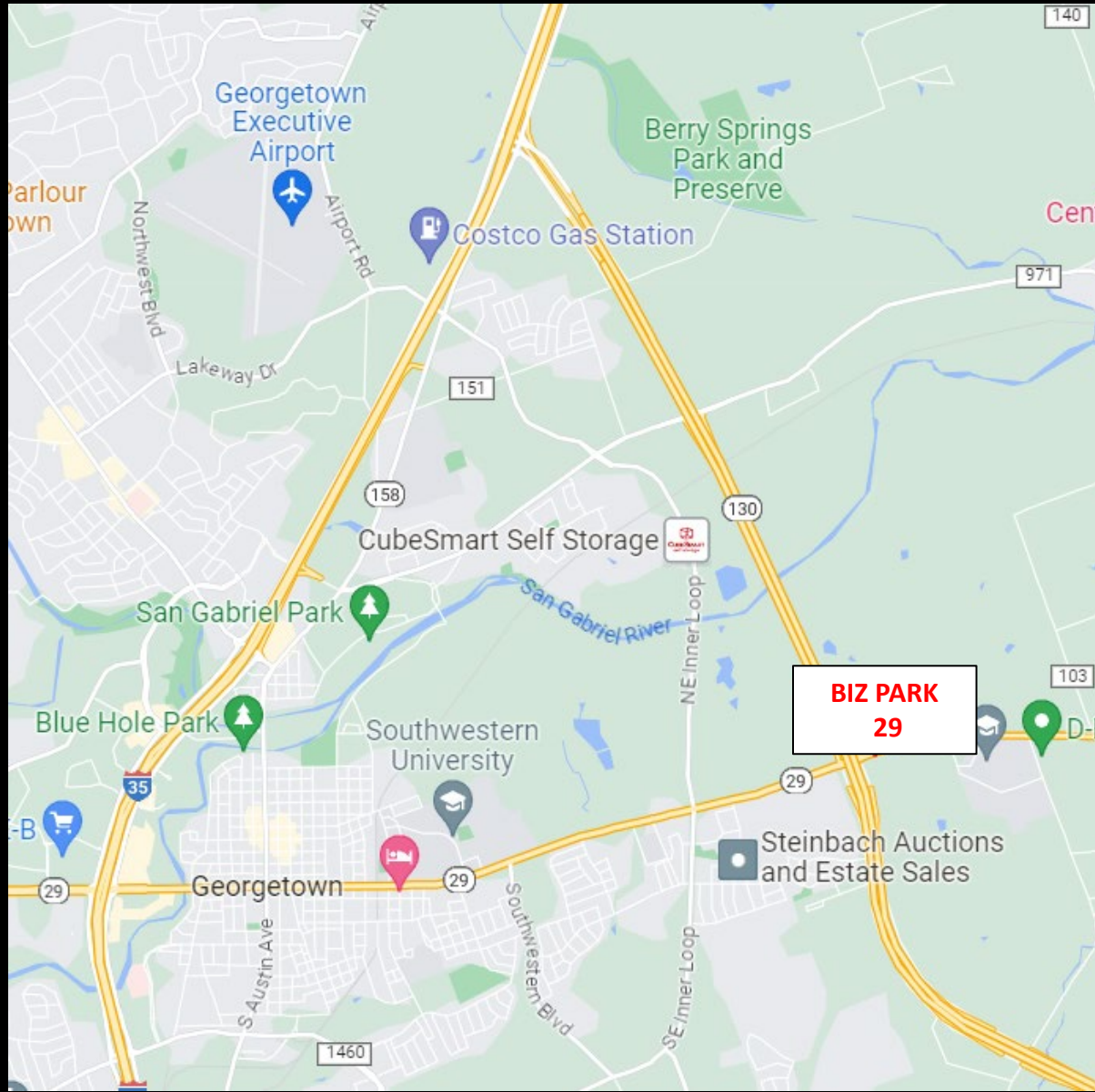
Bldg 11 | 3883 | 1500 SF | \$12 psf nnn

Bldg 12, S. 1245 | 3801 | 2450 SF Available | New Finish Out | \$12 psf nnn

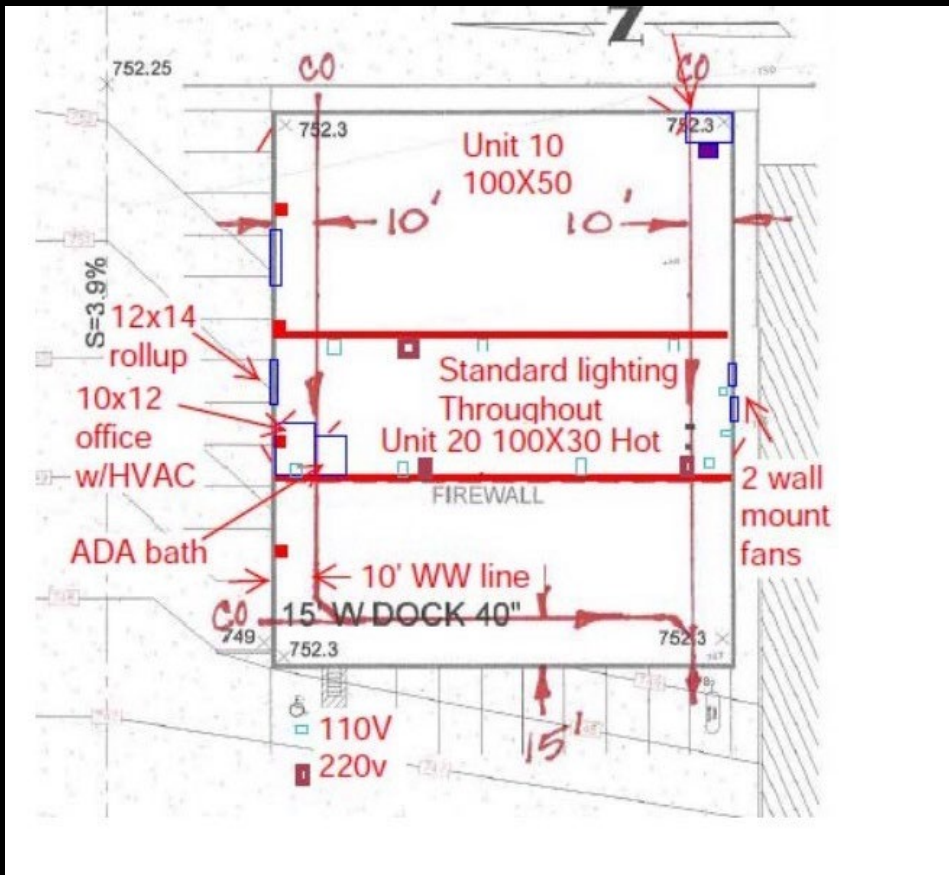
Bldg 12, S. 1273 | 3801 | 5000 SF Available | Approx 300 SF HVAC Office | \$11.50 psf nnn

Building 15 | 3801 | 1750 SF Available | No Overhead Door | Faces University (SH 29) | \$12 psf nnn

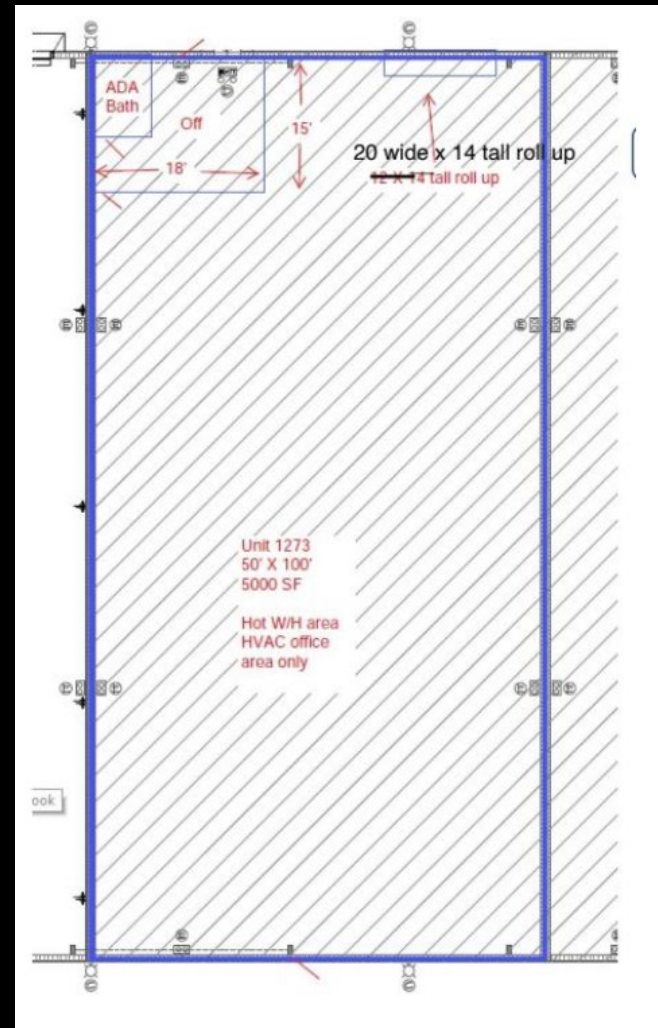
**\$11.50 - \$12.15 PSF  
NNN**



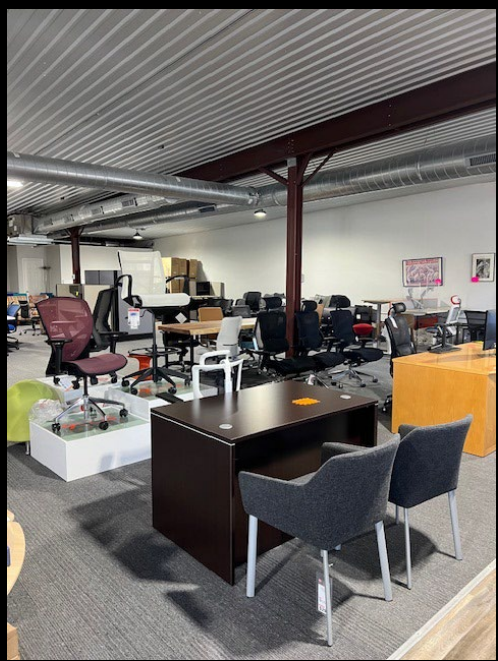
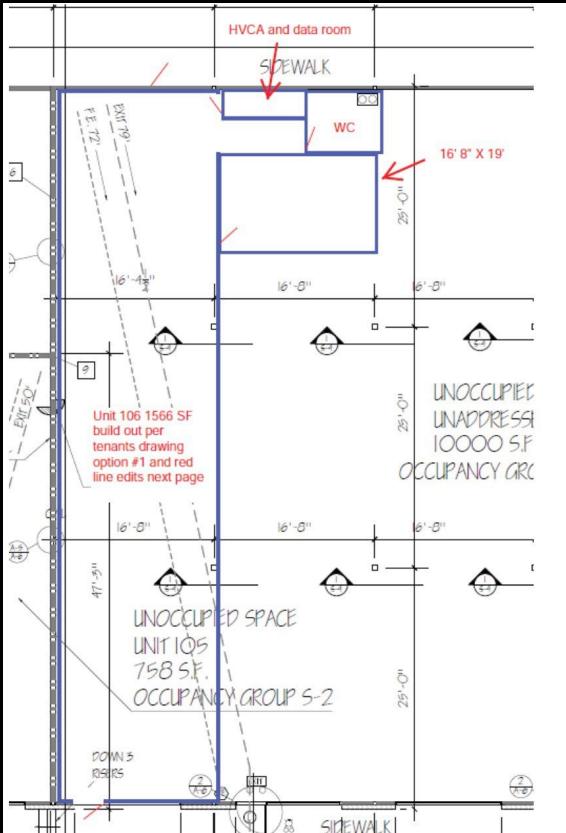
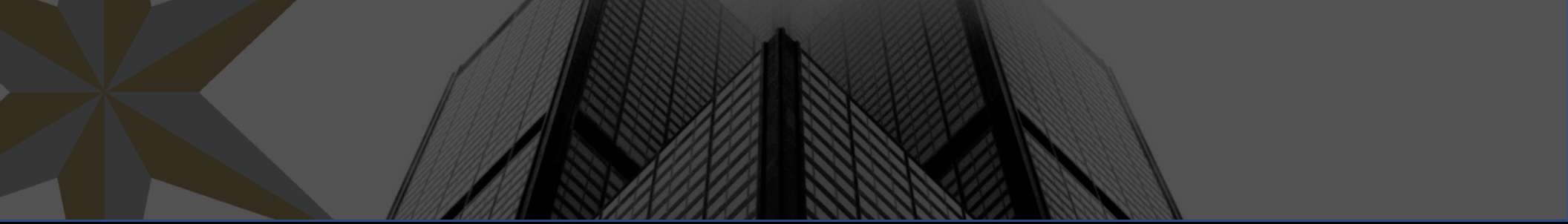
The information contained herein was obtained from sources deemed reliable; however, no guarantees, warranties or representations as to the completeness or accuracy thereof. The presentation of this real estate information is subject to errors; omissions; change of price; prior sale or lease; or withdrawal without notice.



**BLDG 15  
SUITE 20**



**BLDG 12  
SUITE 1273**



**BLDG 9, Suite 106**  
**5,000 SF**

Full buildout, private offices, showroom/open space, kitchen/break, pergo & carpet flooring.