



**TRADEMARK
PROPERTIES**

1155 KILDAIRE FARM RD

CARY, NC 27511

FOUR SPACES LEFT

**FOR
LEASE**

LISTING BROKER:

SHELLEY BHATIA, CCIM

SR. VICE PRESIDENT

910.273.8474 (M)

SBHATIA@TRADEMARKPROPERTIES.COM



**1001 WADE AVENUE SUITE 300, RALEIGH, NC 27605
TRADEMARKPROPERTIES.COM | 919-782-5552**

**1155 KILDAIRE FARM ROAD
CARY, NC 27511**

PROPERTY HIGHLIGHTS

- › Fully furnished office with desk, chair and filing cabinet
- › Shared office space with kitchenette and large, technologically enabled conference room
- › Bright offices with natural light
- › Modern design
- › Quiet and private setting
- › High-speed Internet
- › Easy access to Raleigh, Apex and Holly Springs via US-1 and I-40
- › Down the street from the Shoppes of Kildaire, anchored by Trader Joe's and Staples
- › Convenient access to I-40
- › 15 minutes to RDU International Airport
- › Click [here](#) for additional information and virtual tour

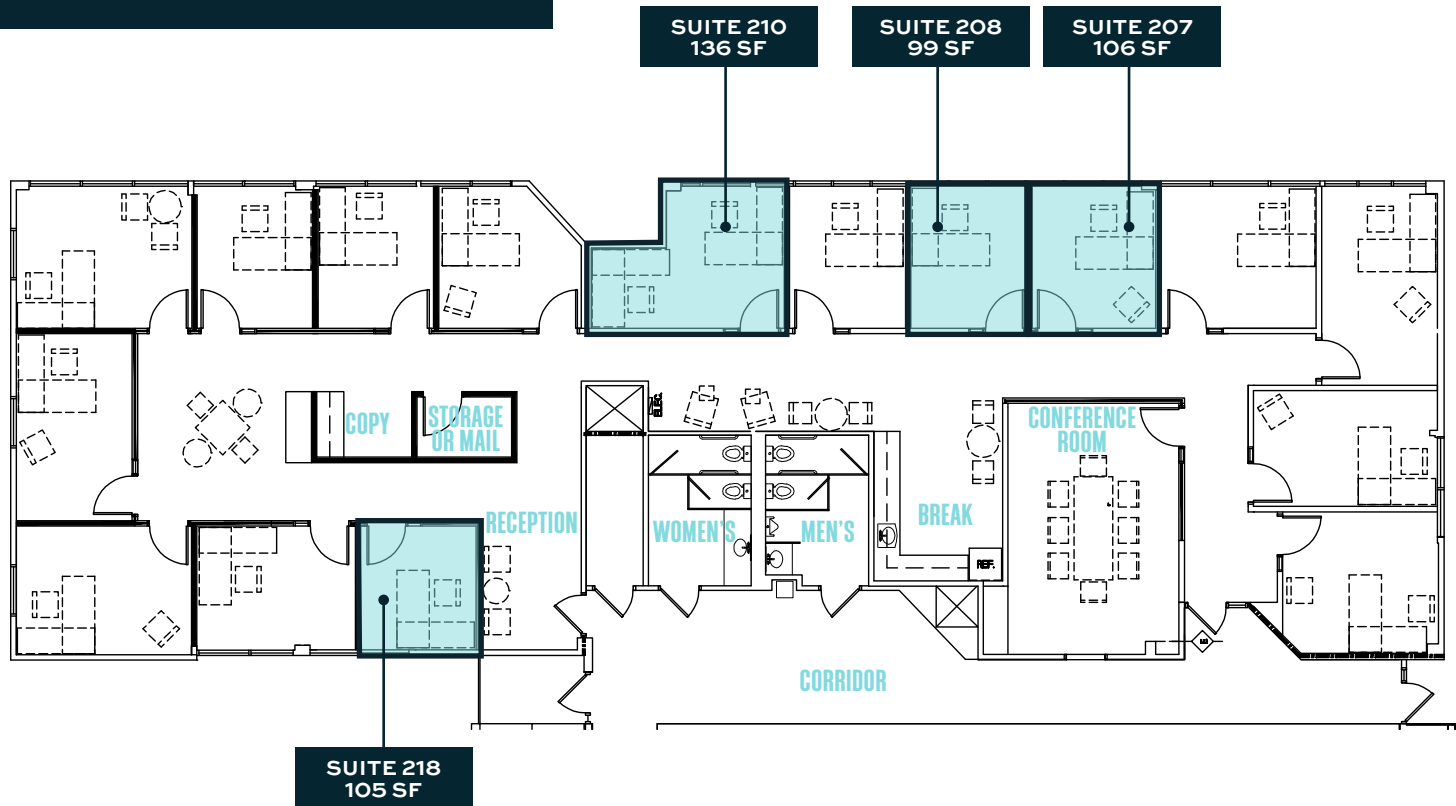


**SHELLEY BHATIA, CCIM
SR. VICE PRESIDENT
910.273.8474 (M)**

SBHATIA@TRADEMARKPROPERTIES.COM

1155 KILDAIRE FARM ROAD
CARY, NC 27511

FLOOR PLAN



SUITE	SIZE	RENT/MONTH	AVAILABLE
207	106 SF	\$825	Immediately
208	99 SF	\$765	Immediately
210	136 SF	\$825	With 30 days notice
218	105 SF	\$725	Immediately

SHELLEY BHATIA, CCIM
SR. VICE PRESIDENT
910.273.8474 (M)

SBHATIA@TRADEMARKPROPERTIES.COM

1155 KILDAIRE FARM ROAD
CARY, NC 27511

RETAIL MAP



SHELLEY BHATIA, CCIM
SR. VICE PRESIDENT
910.273.8474 (M)

SBHATIA@TRADEMARKPROPERTIES.COM

LISTING BROKER:

SHELLEY BHATIA, CCIM

910.273.8474 MOBILE

SBHATIA@TRADEMARKPROPERTIES.COM



TRADEMARK
PROPERTIES

THIS IS OUR TRADEMARK

THE INFORMATION CONTAINED HEREIN WAS OBTAINED FROM SOURCES BELIEVED RELIABLE; HOWEVER, TRADEMARK PROPERTIES MAKES NO GUARANTEES, WARRANTIES, OR REPRESENTATIONS AS TO THE COMPLETENESS OR ACCURACY THEREOF. THE PRESENTATION OF THIS PROPERTY IS SUBMITTED SUBJECT TO ERRORS, OMISSIONS, CHANGES OF PRICE OR CONDITIONS PRIOR TO SALE OR LEASE, OR WITHDRAWAL WITHOUT NOTICE.