



EXECUTIVE OFFICE SPACE FOR LEASE

WOODFIELD GROVE BUSINESS CENTER
830-890 E HIGGINS RD, SCHAUMBURG, IL

RECENT PROPERTY RENOVATIONS INCLUDE:

- LANDSCAPING
- SIGNAGE
- LIGHTING
- WINDOWS
- EXTERIOR DOORS



BUILDING FEATURES:

- “Get me out of the house!” Office Space
- Ideal for Start-Up Businesses
- Single-Story Direct-Access Buildings with 24-Hour Access
- Perfect space for Accountants, Therapists, Attorneys and Other Independent Professionals
- High-End office build outs
- Ample Parking for Client Visitation
- Easy Access from Higgins, Plum Grove Rd, and Woodfield Rd
- Next to LifeTime Fitness and Bank of America
- Just minutes away from Woodfield Mall!

AVAILABLE SPACE:

BLDG	SUITE	SIZE (SF)	MONTHLY RENT	DESCRIPTION	Availability
850	119	805 SF	\$1,007 Per Month	2 private offices with windows, Kitchen	ASAP
850	125-Y	530 SF	\$1,000 Per month	1 private office with kitchen area	ASAP

FOR MORE INFORMATION:

RANDY OLCZYK
Direct: 847.246.9611
randy@chicagolandcommercial.com

RAY OKIGAWA
Direct: 847.246.9632
Ray@chicagolandcommercial.com

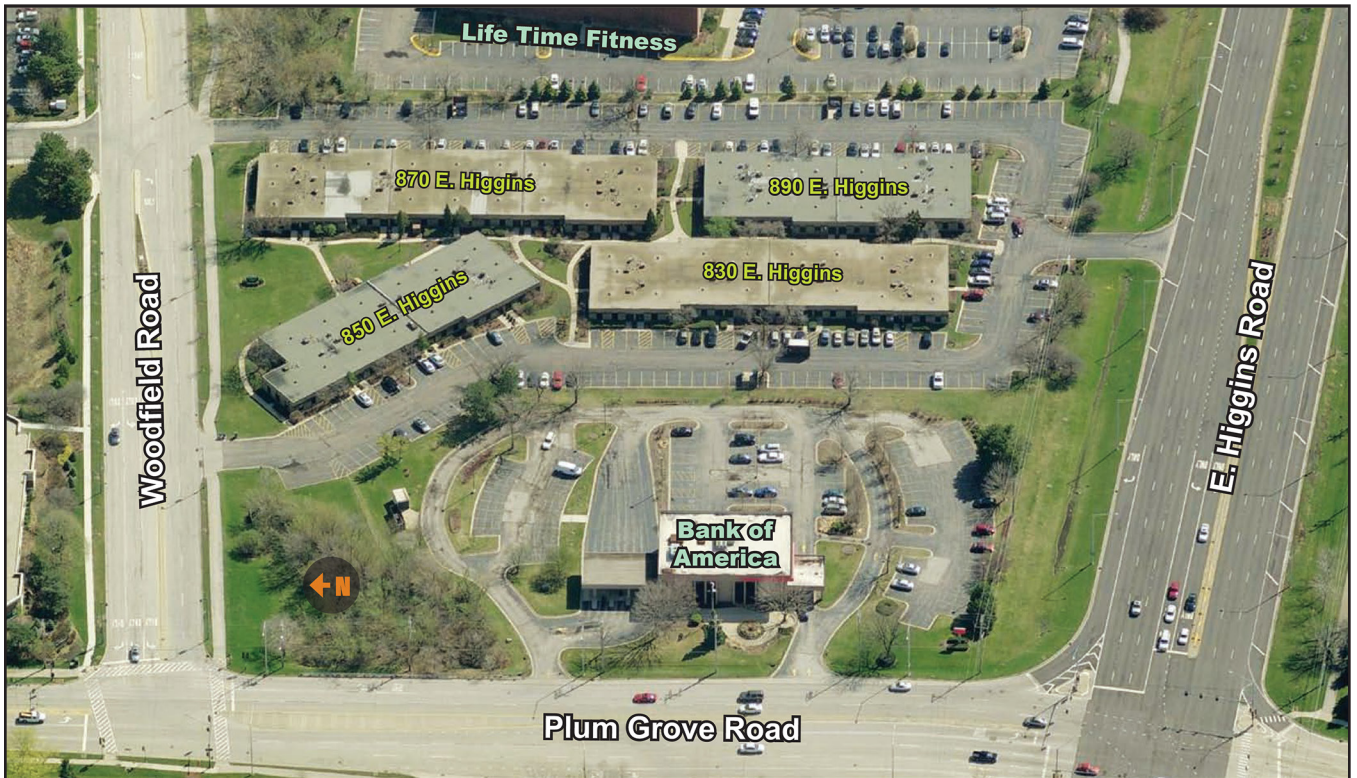
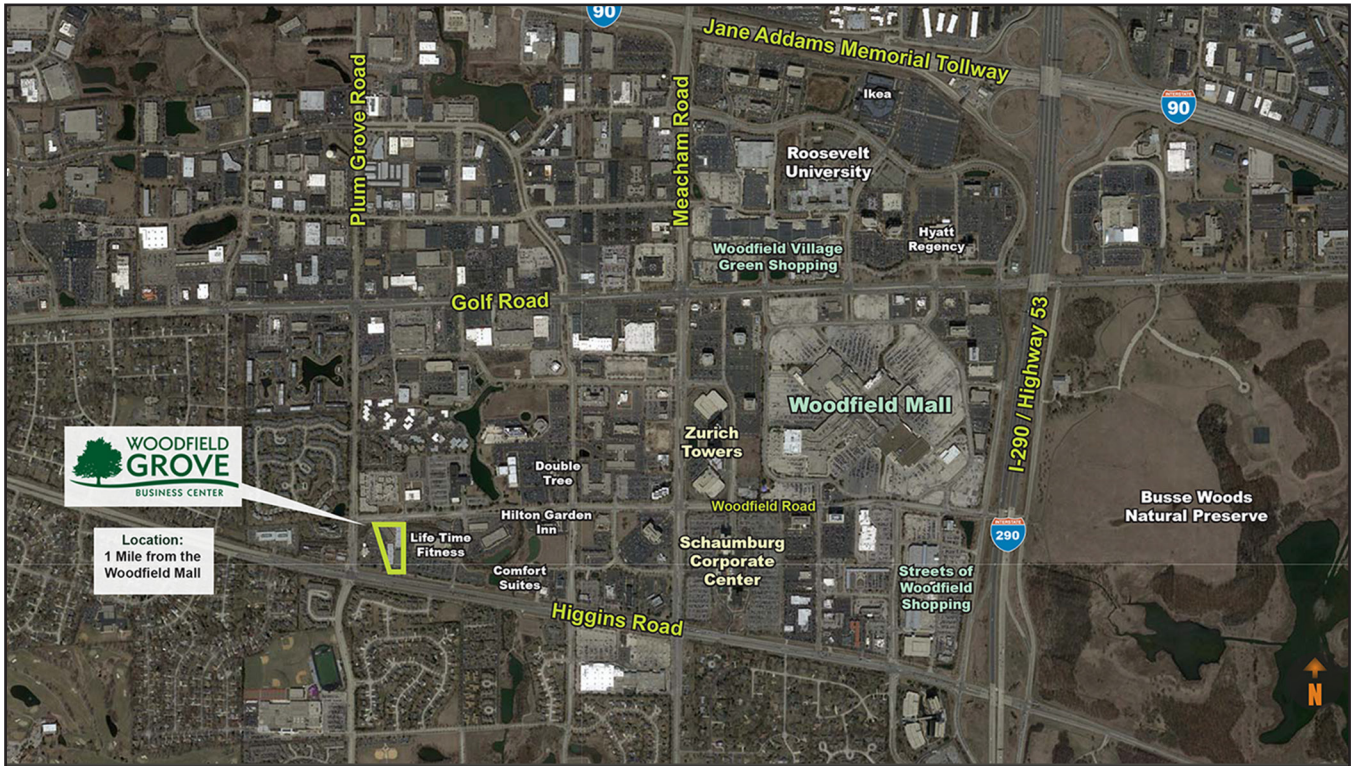


4811 Emerson Ave Suite 112 Palatine, IL



EXECUTIVE OFFICE SPACE FOR LEASE

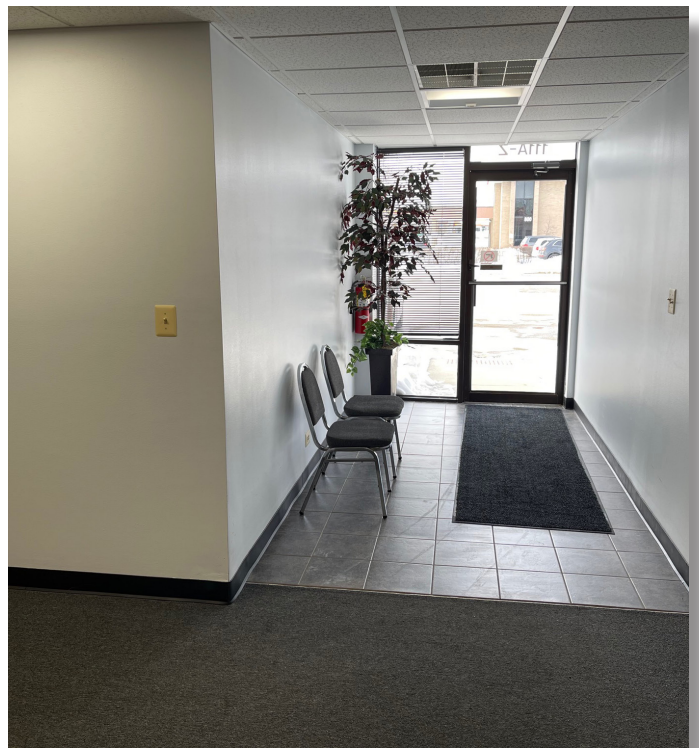
WOODFIELD GROVE BUSINESS CENTER
830-890 E HIGGINS RD, SCHAUMBURG, IL





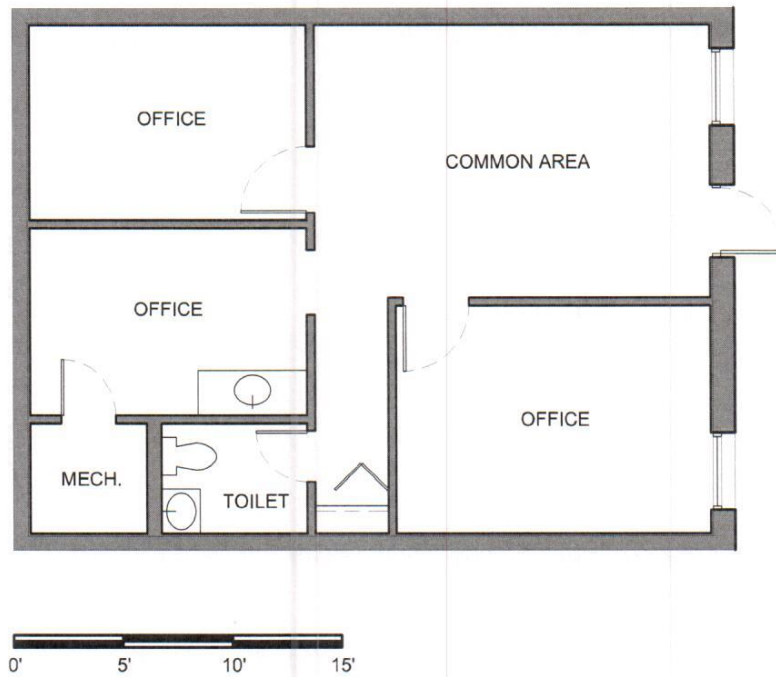
EXECUTIVE OFFICE SPACE FOR LEASE

WOODFIELD GROVE BUSINESS CENTER
830-890 E HIGGINS RD, SCHAUMBURG, IL





EXECUTIVE OFFICE SPACE FOR LEASE
WOODFIELD GROVE BUSINESS CENTER
830-890 E HIGGINS RD, SCHAUMBURG, IL



BUILDING NO. 870 - SUITE 130

784 SQ. FT. - USABLE

WOODFIELD GROVE BUSINESS CENTER
