

EDWARDS PROFESSIONAL PARK I

10752 N 89th Place | Scottsdale, Arizona

OFFICE SUITES & MEDICAL SUITES FOR LEASE



**SPEC SUITES AVAILABLE
FOR IMMEDIATE OCCUPANCY**



TRANSWESTERN

REAL ESTATE
SERVICES

EDWARDS PROFESSIONAL PARK I

10752 N 89th Place | Scottsdale, Arizona

OFFICE SUITES & MEDICAL SUITES FOR LEASE

LEASE RATE:

\$35.00 (Full Service, Net of Janitorial)

Contiguous to ±1,544 RSF	SUITE A202: ±1,396 RSF
	SUITE A207: ± 736 RSF
	SUITE A208: ±808 RSF
<hr/>	
SUITE B212: ±1,272 RSF	





LOCATED
Just off Loop 101,
north of Shea Blvd



TENANT MIX
Excellent mix of medical,
dental, and office tenants



1/2 MILE
From HonorHealth
Scottsdale Shea Hospital



NEARBY
Numerous restaurant
and retail amenities

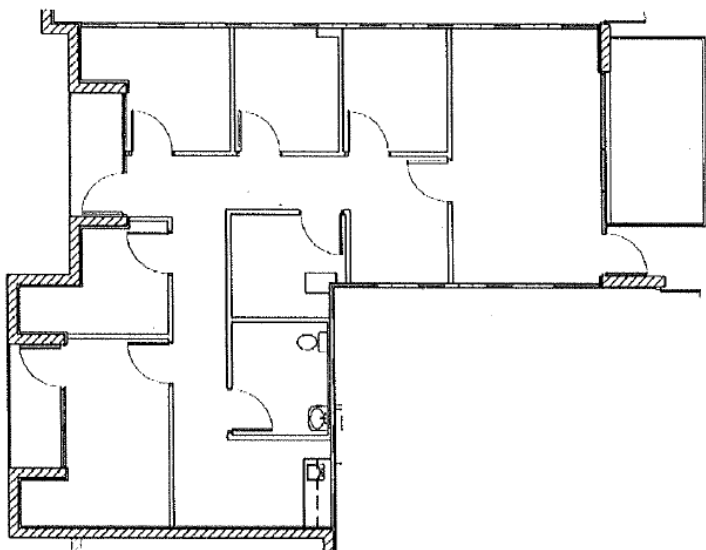


EDWARDS PROFESSIONAL PARK I

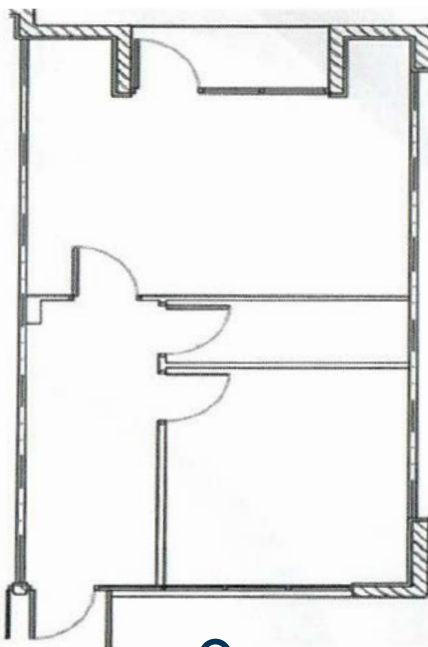
10752 N 89th Place | Scottsdale, Arizona

OFFICE SUITES & MEDICAL SUITES FOR LEASE

Suite A202: ±1,396 RSF

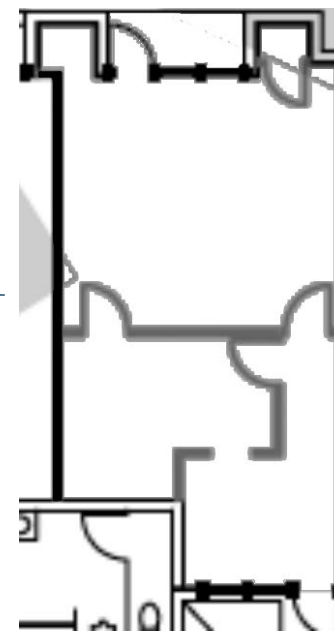


Suite A207: ±736 RSF



VIRTUAL TOUR

Suite A208: ±808 RSF



VIRTUAL TOUR

Contiguous to
±1,544 RSF

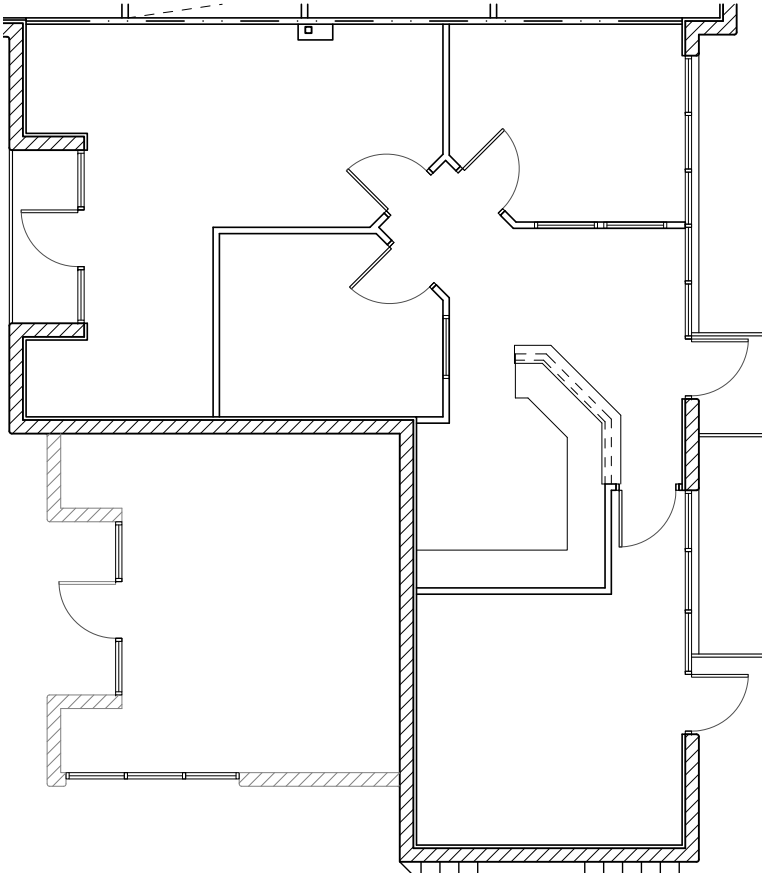
EDWARDS PROFESSIONAL PARK I

10752 N 89th Place | Scottsdale, Arizona

OFFICE SUITES & MEDICAL SUITES FOR LEASE

BUILDING B

SUITE B212: ±1,272 RSF



VIRTUAL TOUR



- » 51,509 SF Total
- » 2 Stories
- » Class B Office Building
- » New Ownership
- » Strong traffic counts along Shea Blvd & Loop 101 Freeway

EDWARDS PROFESSIONAL PARK I

10752 N 89th Place | Scottsdale, Arizona

OFFICE SUITES & MEDICAL SUITES FOR LEASE

**KATHLEEN MORGAN**

Managing Director
602.809.1048

kathleen.morgan@transwestern.com

KEVIN SMIGIEL

Vice President
602.550.9295

kevin.smigiel@transwestern.com

VINCE FEMIANO

Managing Director
602.791.3310

vince.femiano@transwestern.com

ANDREW OLIVET

Associate
602.370.2685

andrew.olivet@transwestern.com



TRANSWESTERN

REAL ESTATE
SERVICES

The information provided herein was obtained from sources believed reliable; however, Transwestern makes no guarantees, warranties or representations as to the completeness of accuracy thereof. The presentation of this property is submitted subject to errors, omissions, change of price or conditions, prior to sale or lease, or withdrawal without notice. Copyright © 2025 Transwestern.