

FOR LEASE

# SOUTHPORT CENTER

8333 Rockside Road  
Valley View, Ohio 44125



# PROPERTY INFORMATION

## QUICK STATS

<b>Total Building Size</b>	94,000 SF
<b>Total Land Area</b>	5.52 Acres
<b># of Buildings</b>	One (1)
<b>Construction Status</b>	Existing
<b>Construction Type</b>	Pre-cast
<b>Lighting</b>	LED
<b>Parking Spaces</b>	325

## SITE AVAILABILITY

<b>Suite 201</b>	5,123 RSF
<b>Suite 202</b>	11,722 RSF
<b>Suite 203</b>	10,516 RSF

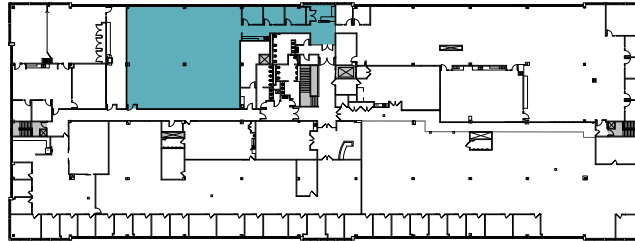


## PROPERTY HIGHLIGHTS

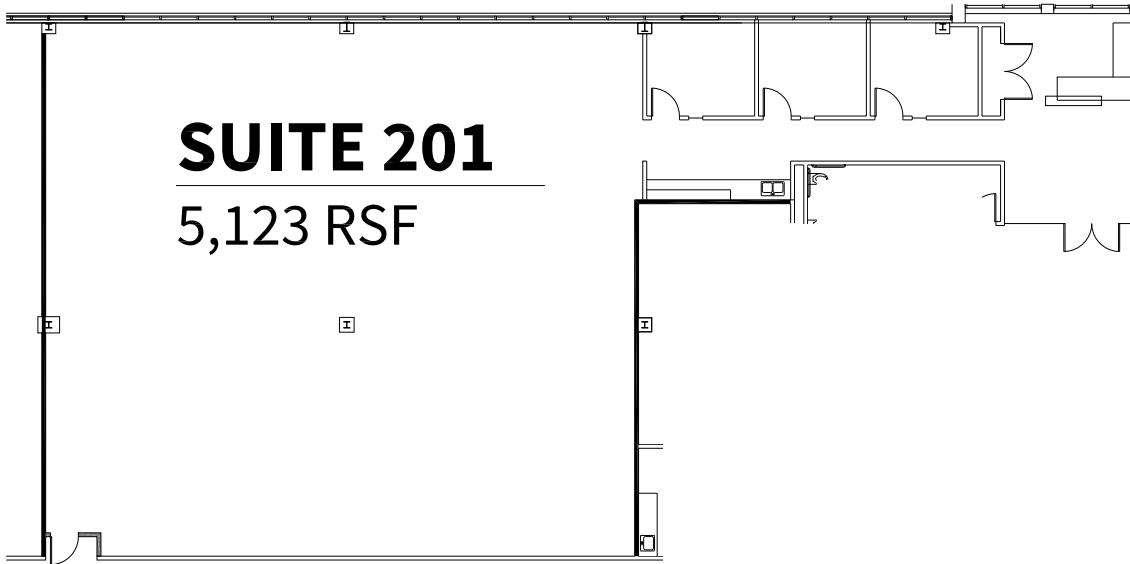
- Highly flexible office space that can be customized to suit office, medical, or lab requirements
- Managed by a strong local ownership committed to investing into the building and its tenants
- Beautiful window lines and meticulously maintained landscaping
- Ample surface level parking
- Heavy power capacity that can support the demands of medical, laboratory, and tech-heavy operations
- Prime location minutes from I-480 and I-77, providing connection to downtown Cleveland, Hopkins International Airport, and the I-80 Turnpike
- Immediate proximity to the Rockside Road corridor's premier dining, hospitality, and retail centers

# OVERALL BUILDING PLAN

8333 ROCKSIDE ROAD | VALLEY VIEW, OHIO 44125



KEY PLAN



## Property Specifications

**Total Building Size:**  
94,000 SF

**Total Site Size:**  
5.52 acres

**Asking Lease Rate:**  
Office: \$15.50 SF MG

## Current Availability

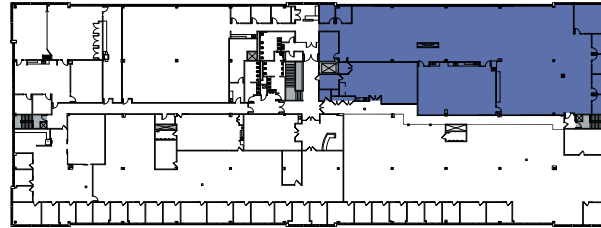
**Suite 201:**  
5,123 SF RSF

**Suite 202:**  
11,722 RSF

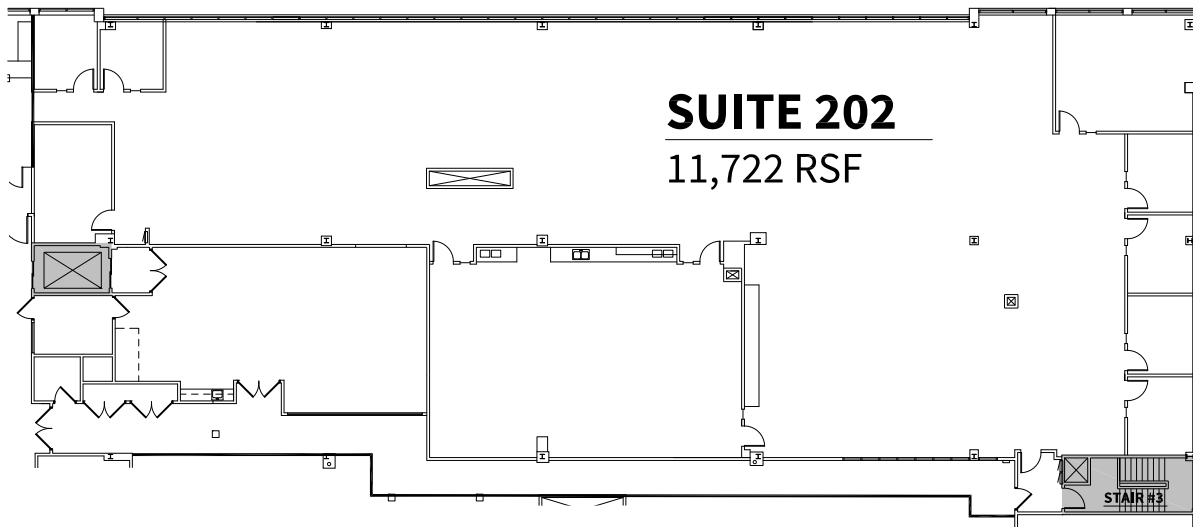
**Suite 203:**  
10,516 RSF

# OVERALL BUILDING PLAN

8333 ROCKSIDE ROAD | VALLEY VIEW, OHIO 44125



KEY PLAN



## Property Specifications

**Total Building Size:**  
94,000 SF

**Total Site Size:**  
5.52 acres

**Asking Lease Rate:**  
Office: \$15.50 SF MG

## Current Availability

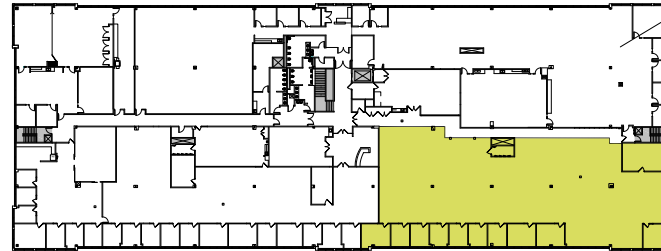
**Suite 201:**  
5,123 RSF

**Suite 202:**  
11,722 RSF

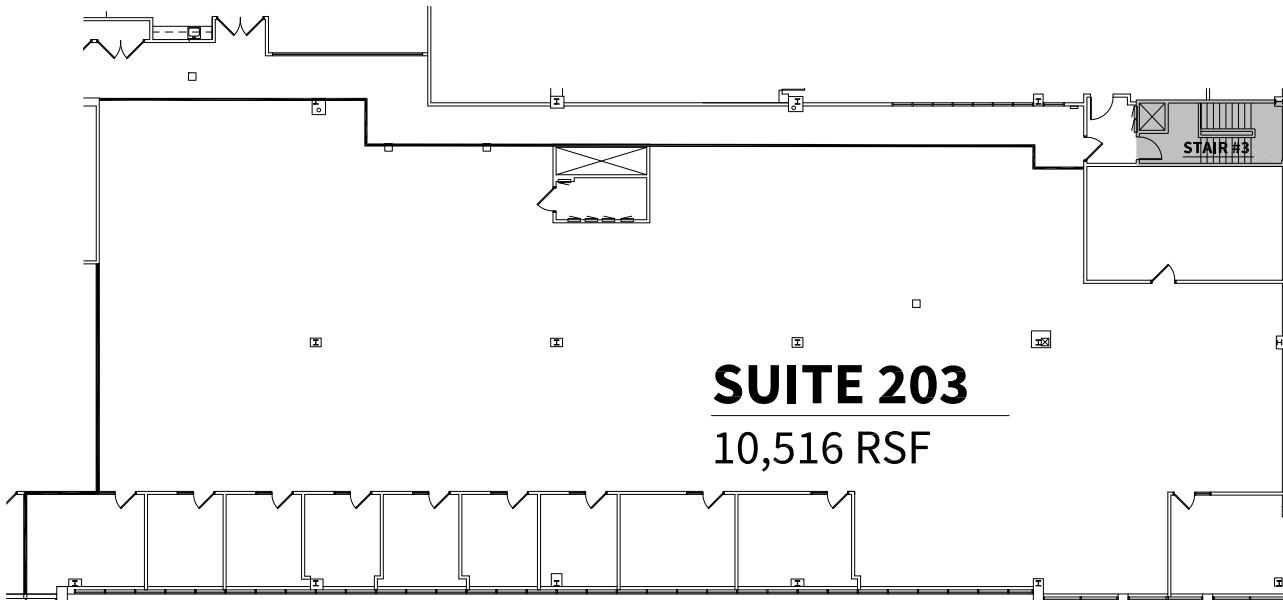
**Suite 203:**  
10,516 RSF

# OVERALL BUILDING PLAN

8333 ROCKSIDE ROAD | VALLEY VIEW, OHIO 44125



KEY PLAN



## Property Specifications

**Total Building Size:**  
94,000 SF

**Total Site Size:**  
5.52 acres

**Asking Lease Rate:**  
Office: \$15.50 SF MG

## Current Availability

**Suite 201:**  
5,123 RSF

**Suite 202:**  
11,722 RSF

**Suite 203:**  
10,516 RSF

# PROPERTY PHOTOS

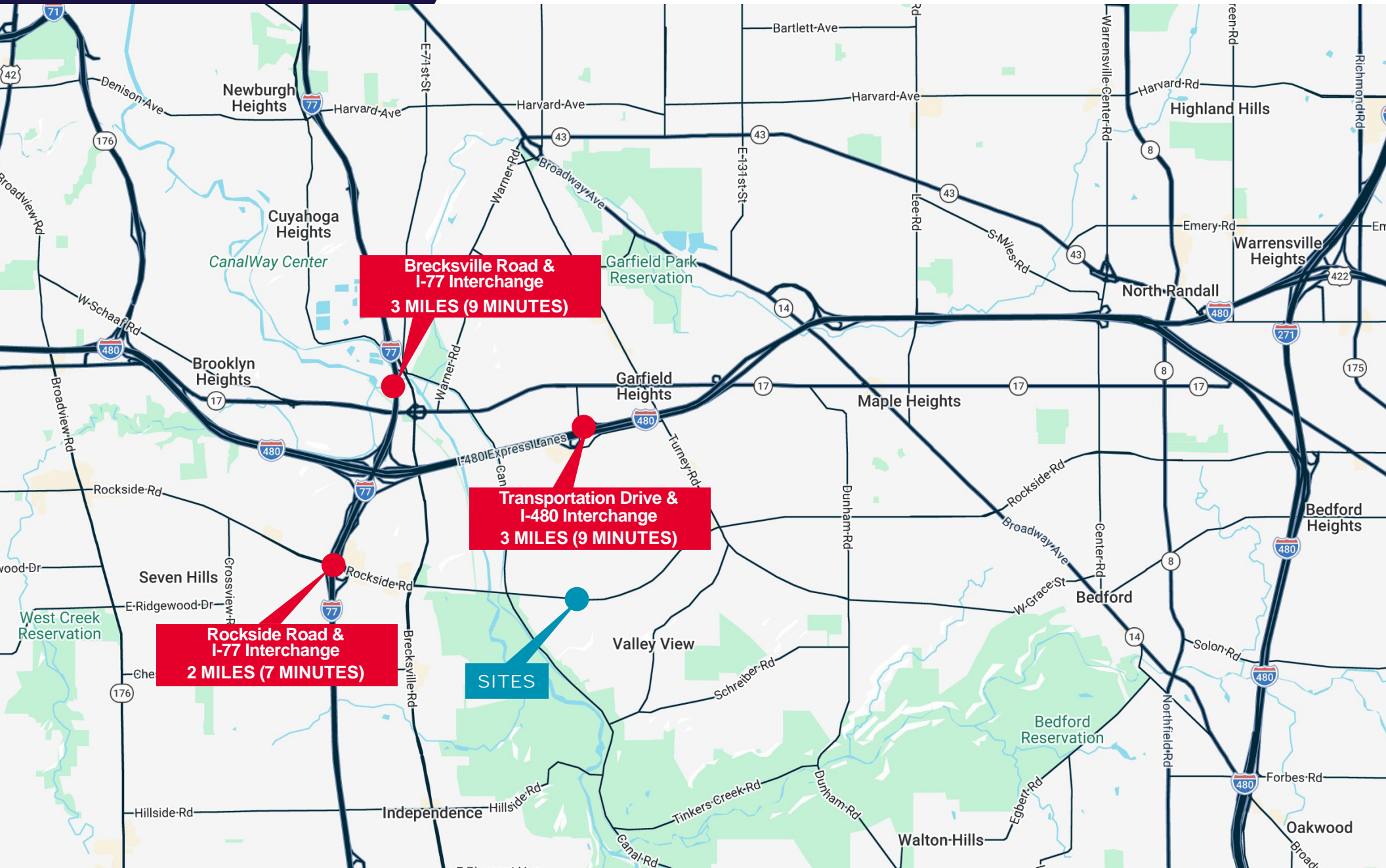


# AERIAL PHOTO



# LOCATION MAP

DISTANCE TO INTERCHANGES



# AREA AMENITIES MAP





# 8333 ROCKSIDE ROAD VALLEY VIEW, OHIO 44125

**BRAD NOSAN**

Vice President

+1 216 525 1479

[bnosan@crescorealestate.com](mailto:bnosan@crescorealestate.com)

**ELIOT KIJEWski, SIOR**

Principal

+1 216 525 1487

[ekijewski@crescorealestate.com](mailto:ekijewski@crescorealestate.com)

**COLE SORENSON**

Senior Associate

+1 216 525 1470

[csorensen@crescorealestate.com](mailto:csorensen@crescorealestate.com)

**GEORGE J. POFOK, CCIM, SIOR**

Principal

+1 216 525 1469

[gpofok@crescorealestate.com](mailto:gpofok@crescorealestate.com)

**ALEX VALLETTO**

Associate

+1 216 525 1485

[avalletto@crescorealestate.com](mailto:avalletto@crescorealestate.com)



**CUSHMAN &  
WAKEFIELD**



**Cushman & Wakefield | CRESCO Real Estate**

6100 Rockside Woods Blvd, Suite 200

Cleveland, Ohio 44131

[crescorealestate.com](http://crescorealestate.com)

©2026 Cushman & Wakefield. All rights reserved. The information contained in this communication is strictly confidential. This information has been obtained from sources believed to be reliable but has not been verified. NO WARRANTY OR REPRESENTATION, EXPRESS OR IMPLIED, IS MADE AS TO THE CONDITION OF THE PROPERTY (OR PROPERTIES) REFERENCED HEREIN OR AS TO THE ACCURACY OR COMPLETENESS OF THE INFORMATION CONTAINED HEREIN, AND SAME IS SUBMITTED SUBJECT TO ERRORS, OMISSIONS, CHANGE OF PRICE, RENTAL OR OTHER CONDITIONS, WITHDRAWAL WITHOUT NOTICE, AND TO ANY SPECIAL LISTING CONDITIONS IMPOSED BY THE PROPERTY OWNER(S). ANY PROJECTIONS, OPINIONS OR ESTIMATES ARE SUBJECT TO UNCERTAINTY AND DO NOT SIGNIFY CURRENT OR FUTURE PROPERTY PERFORMANCE.