



## Executive office space in prime Goose Creek location

- Single-story, multi-tenant office buildings
- On-site parking available
- Accessible to TriCounty Link bus route
- 24 hour accessibility
- Full service lease type

### Get more information

**Gregg Legerton**

Vice President

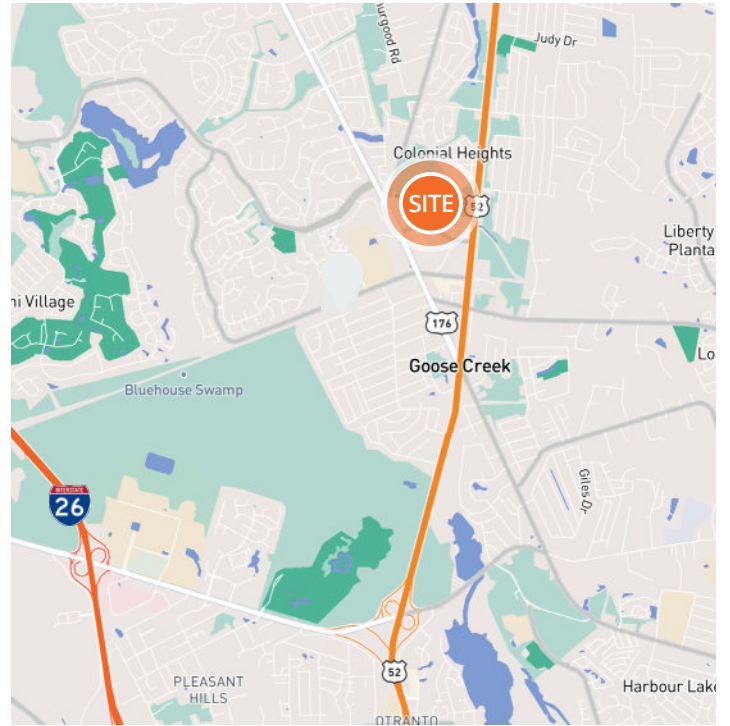
843 973 8354

[gregg.legerton@avisonyoung.com](mailto:gregg.legerton@avisonyoung.com)

# Property overview

## Property specs

Total building size	±11,500 sf
Municipality	City of Goose Creek
County	Berkeley
Zoning	VN - Village Node
Lease type	Full service



## Availabilities

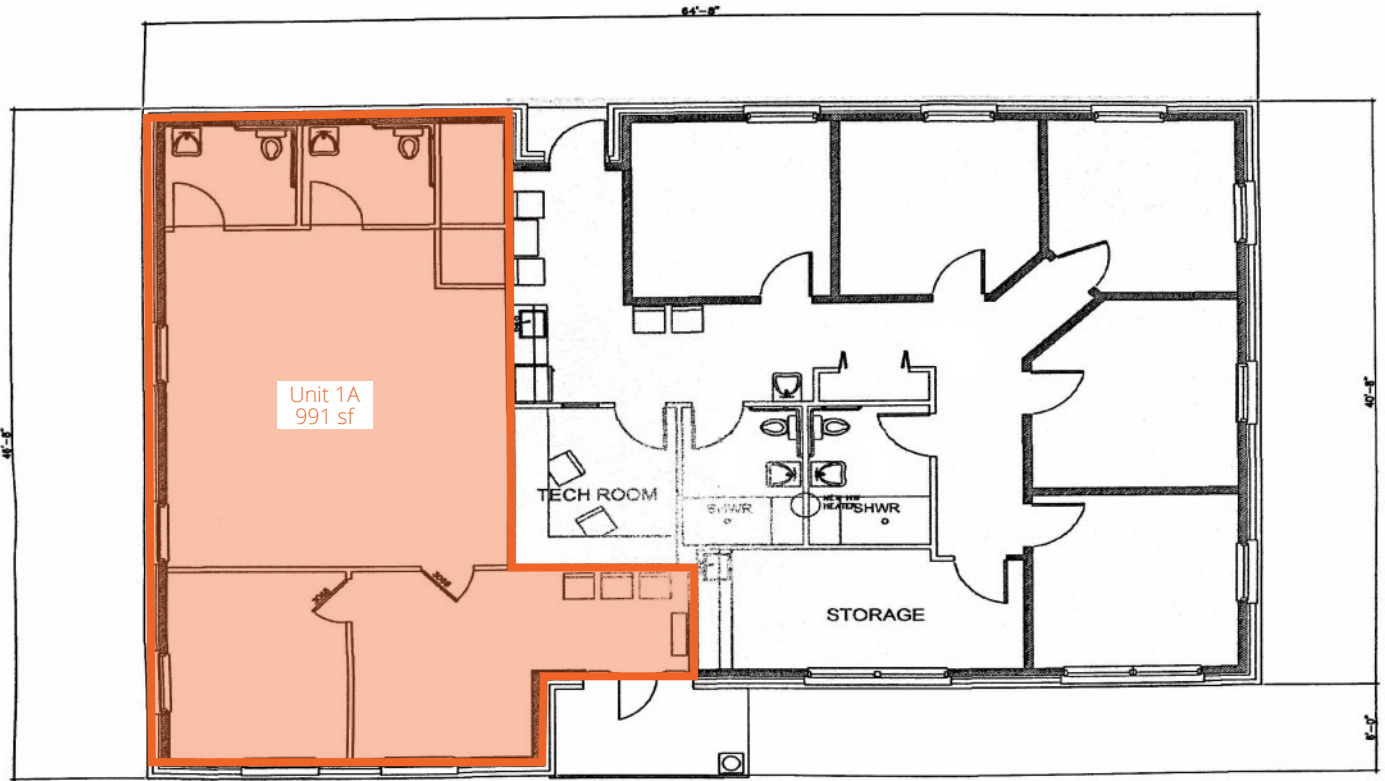
Building	Unit	Size	Lease rate
1	1A	±991 sf	\$2,500/month
2	7	±620 sf	\$1,400/month

## Site plan



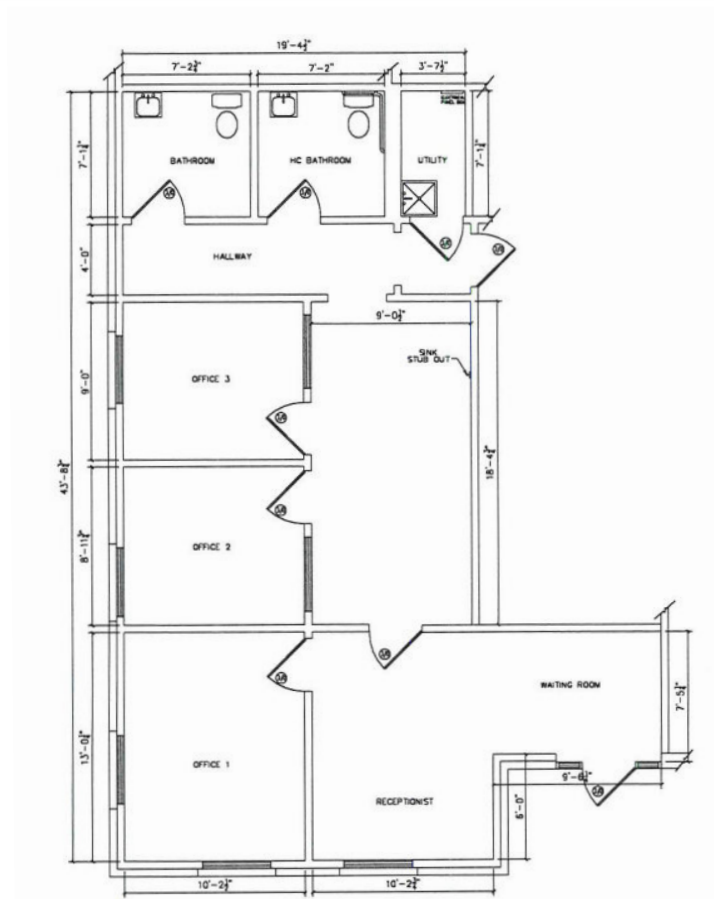
# Floorplan

## Building 1



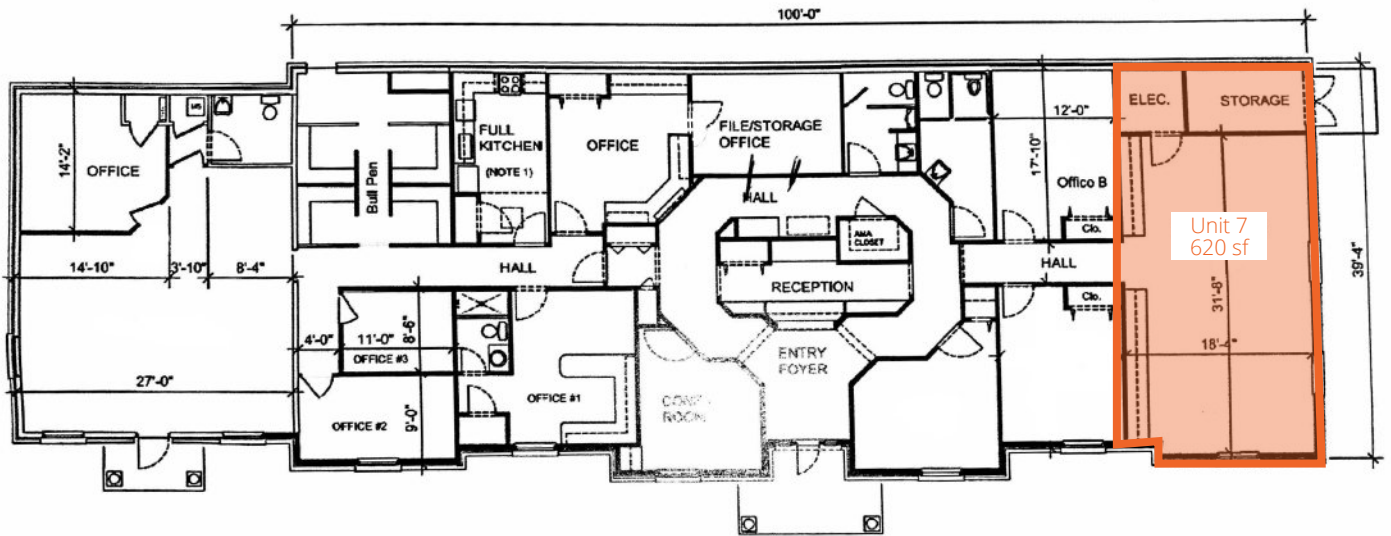
### Unit 1A - Updated buildout

Designed as a small dental office but can accommodate a wide variety of office uses.

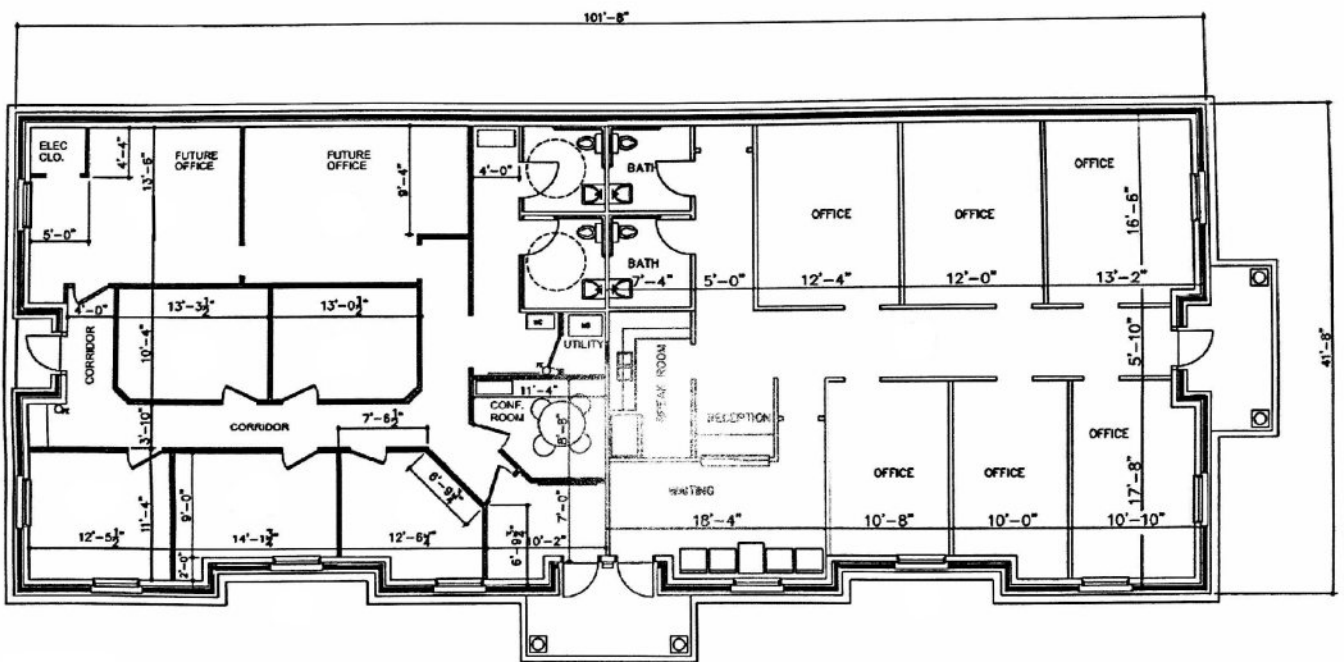


# Floorplan

## Building 2

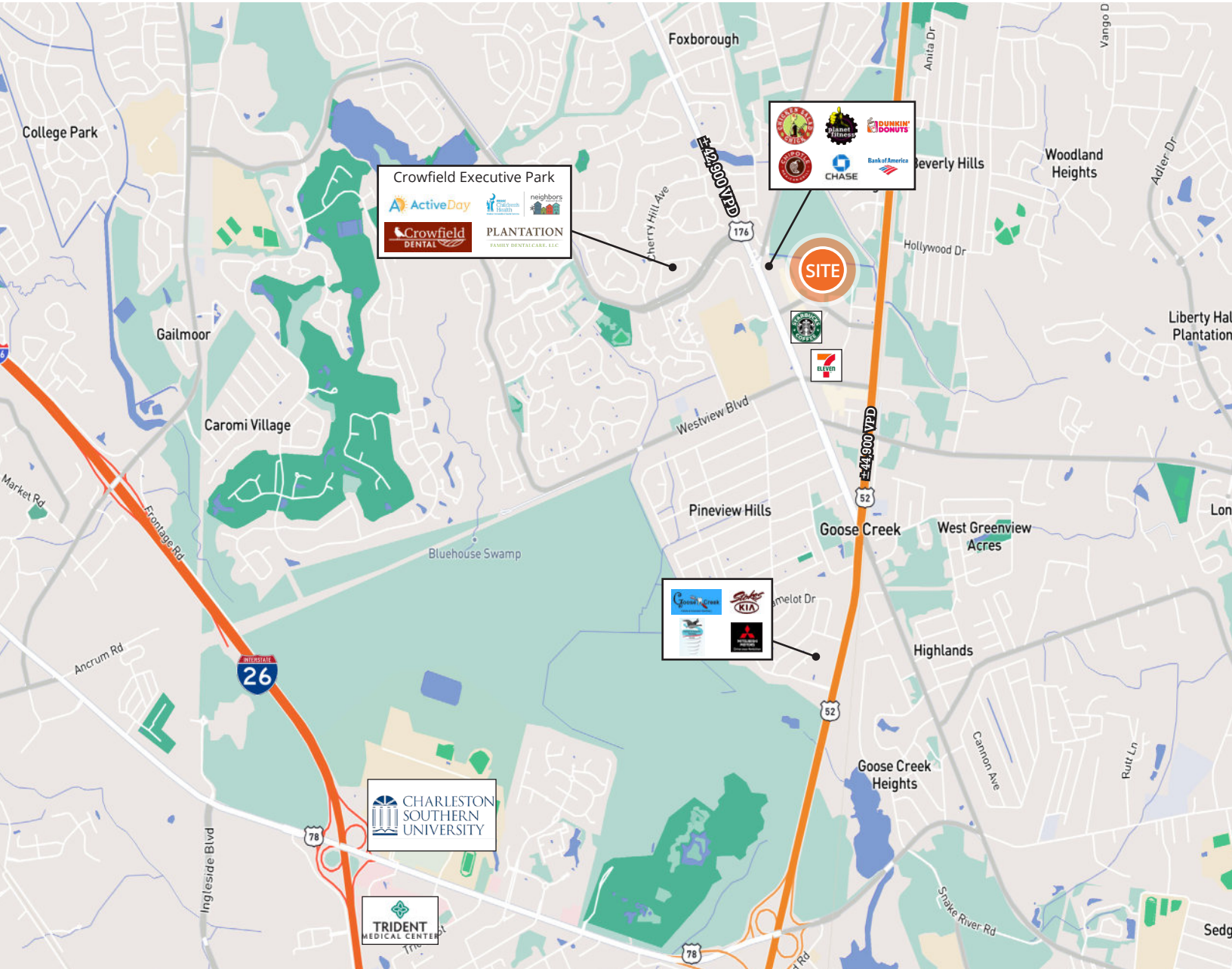


## Building 3 - Fully leased



# Location

105 Central Ave



## Get more information

**Gregg Legerton**

Vice President

843 830 7236

[gregg.legerton@avisonyoung.com](mailto:gregg.legerton@avisonyoung.com)

Avison Young-South Carolina, Inc. | 40 Calhoun Street, Suite 350 | Charleston, SC 29401 | 843 725 7200

© 2026, Avison Young. Information contained herein was obtained from sources deemed reliable and, while thought to be correct, have not been verified. Avison Young does not guarantee the accuracy or completeness of the information presented, nor assumes any responsibility or liability for any errors or omissions therein.

