



111 CHESTNUT STREET

**CBRE**

P R O V I D E N C E , R I



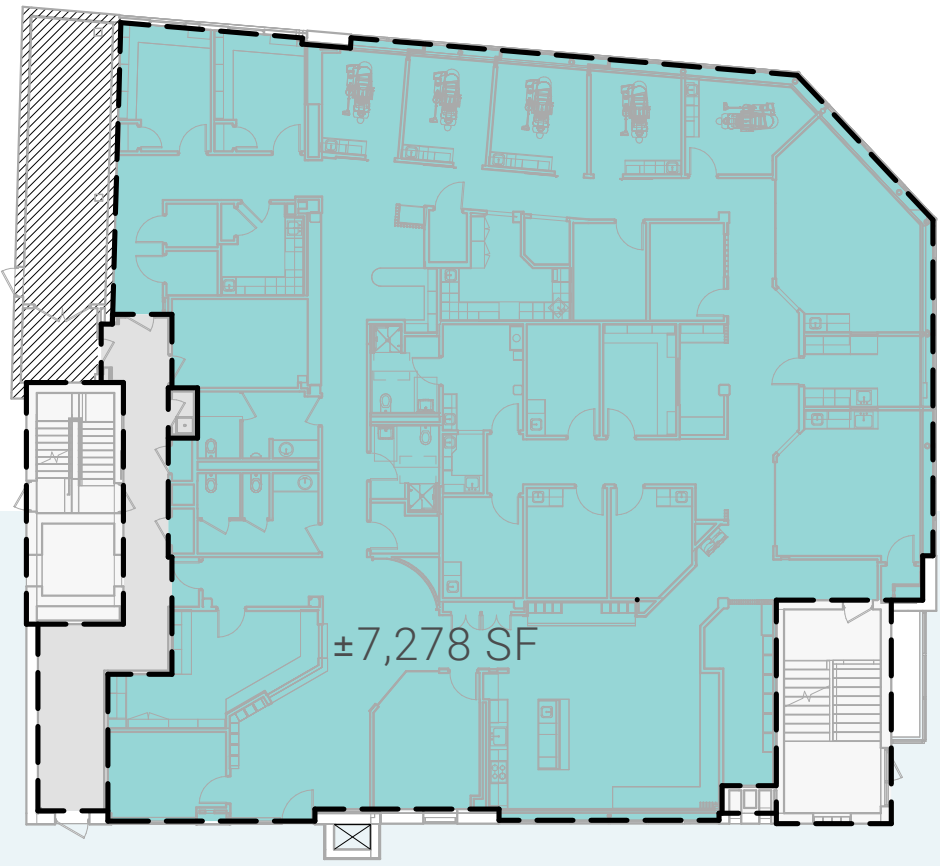
## T H E P R O P E R T Y

CBRE Inc. is pleased to offer  $\pm 10,505$  SF of medical outpatient space for lease at 111 Chestnut Street in Providence, Rhode Island. The available space has high end finishes and has been lightly utilized, presenting a unique opportunity for a medical provider. The property is located in the heart of the innovative and evolving Jewelry District of Providence. The Jewelry District is within walking distance of the downtown core and is home to many academic, medical and professional services. 111 Chestnut Street also offers immediate access to Interstates 95 and 195, offering convenient travel in and out of Providence. The building also has on-site parking.

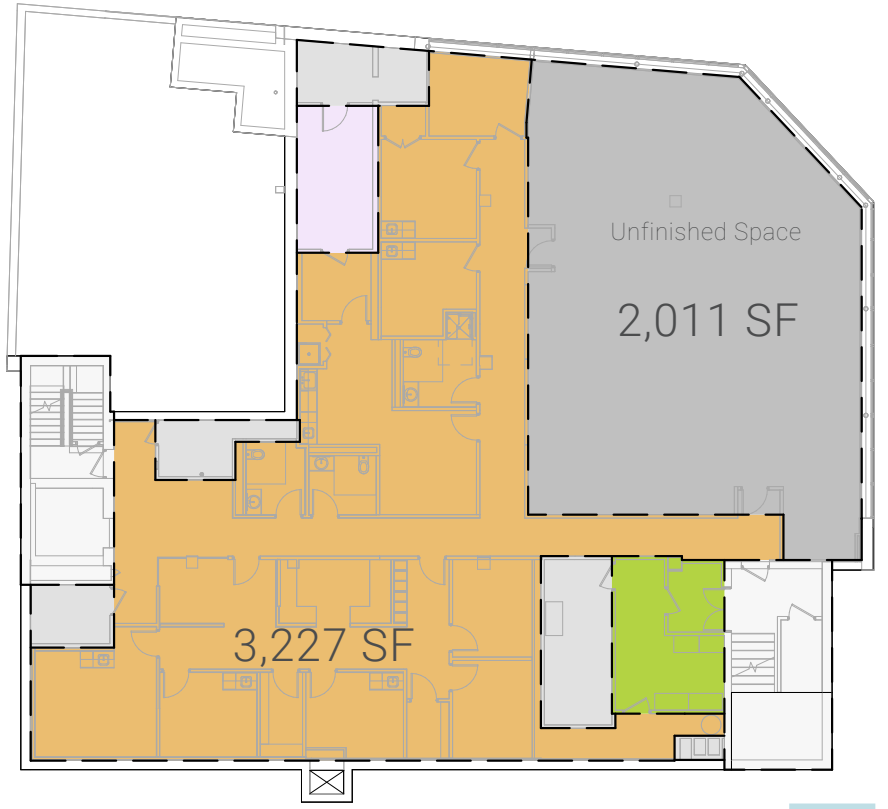


### PROPERTY HIGHLIGHTS

- $\pm 10,505$  SF of built out medical space
- $\pm 2,000$  SF of shell expansion space
- Available parking on site
- Highly accessible
- Proximate to over \$1 billion dollars of neighborhood investment in the last 5 years



First Floor



Lower Level



111  
Chestnut Street

Brown University Health

The Warren Alpert Medical School of Brown University

Care New England

Brown University

Brown University

Brown University

Brown University Health

Brown University

Brown University

Brown University

Providence Pediatric Dentistry  
[www.drmulvey.com](http://www.drmulvey.com)



111  
Chestnut Street

**INNOVATION DISTRICT GARAGE**  
±1,250 SPACES  
±\$43,000,000  
2020

**STATE HEALTH & OCEAN STATE LAB INCUBATOR**  
±208,000 SF  
±\$175,000,000  
2026

**DANOFF LIFE SCIENCE LABS**  
±300,000 SF  
±\$400,000,000  
2027

111

Chestnut Street



LEASING  
CONTACTS

**ANDREW GALVIN**

Senior Vice President

+1 401 330 1915

[andrew.galvin@cbre.com](mailto:andrew.galvin@cbre.com)

**PATRICK JOYCE**

Vice President

+1 401 621 4334

[patrick.joyce@cbre.com](mailto:patrick.joyce@cbre.com)

© 2026 CBRE, Inc. All rights reserved. This information has been obtained from sources believed reliable but has not been verified for accuracy or completeness. You should conduct a careful, independent investigation of the property and verify all information. Any reliance on this information is solely at your own risk. CBRE and the CBRE logo are service marks of CBRE, Inc. All other marks displayed on this document are the property of their respective owners, and the use of such logos does not imply any affiliation with or endorsement of CBRE. Photos herein are the property of their respective owners. Use of these images without the express written consent of the owner is prohibited. CMPM 111 Chestnut Street\_Brochure\_2.27.26 03/24/26

**CBRE**