

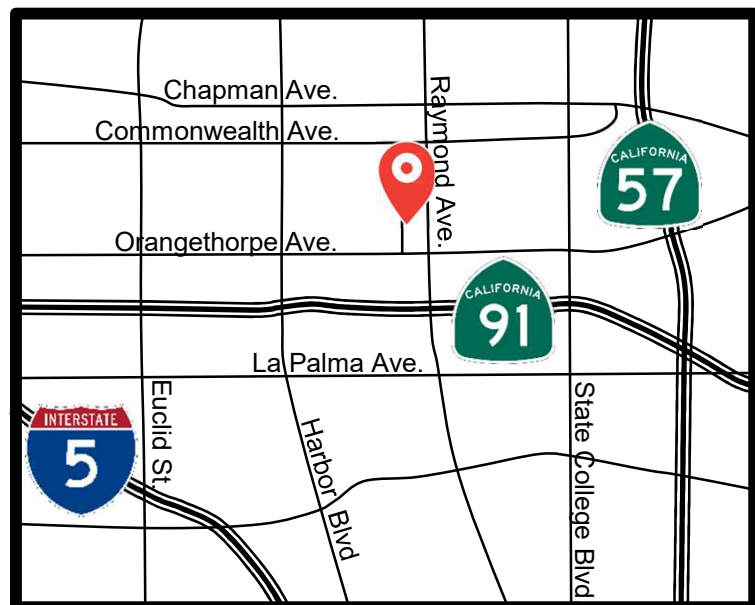
FOR SALE OR LEASE RARE DIVISIBLE INDUSTRIAL BUILDING



**1812-1818 N. ORANGETHORPE PARK
ANAHEIM, CA 92801**

Property Overview

- Available Size: \pm 10,000 SF
- Lot Size: \pm 24,300 SF
- **Large Fenced Yard**
- Four (4) Ground Level Doors
- Clear Height: \pm 15'-19'
- New Office Space Finishes
- Ample Parking
- Heavy Power: 600A / 480V
- Flexible Uses Permissible
- Divisible to two (2) units; 5,000 SF each unit
- Close Proximity to 91, 5, and 57 Freeways



**Map Not to Scale*

Website: www.OrangethorpePark.com

The information contained herein has not been verified by real estate brokers. Although we have no reason to doubt its accuracy we do not guarantee it. Buyers and tenant should verify information independently.



STEVEN CRANE
Executive Vice President
(714) 856-2923
CA DRE Lic# 00844752
SteveC@ashwillassociates.com

GARY MARTINEZ, CCIM, SIOR
Senior Vice President
(714) 905-9383
CA DRE Lic# 01318932
gary@ashwillassociates.com

AERIAL VIEW

1812-1818 N. ORANGETHORPE PARK | ANAHEIM, CA 92801



Website: www.OrangethorpePark.com



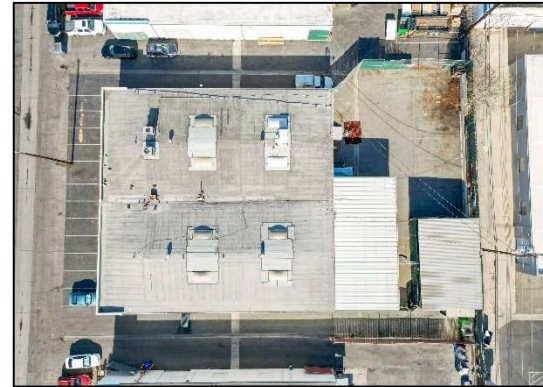
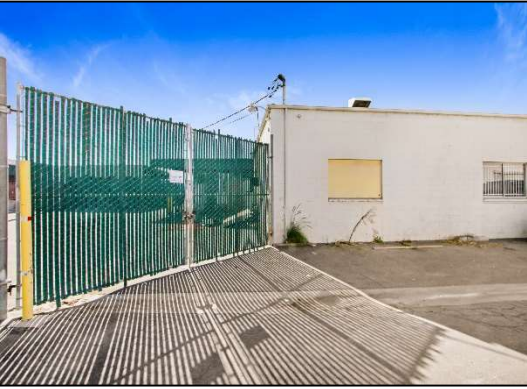
Corp DRE# 01291393

STEVEN CRANE
Executive Vice President
(714) 856-2923
CA DRE Lic# 00844752
SteveC@ashwillassociates.com

GARY MARTINEZ, CCIM, SIOR
Senior Vice President
(714) 905-9383
CA DRE Lic# 01318932
gary@ashwillassociates.com

PROPERTY PHOTOS

1812-1818 N. ORANGETHORPE PARK | ANAHEIM, CA 92801



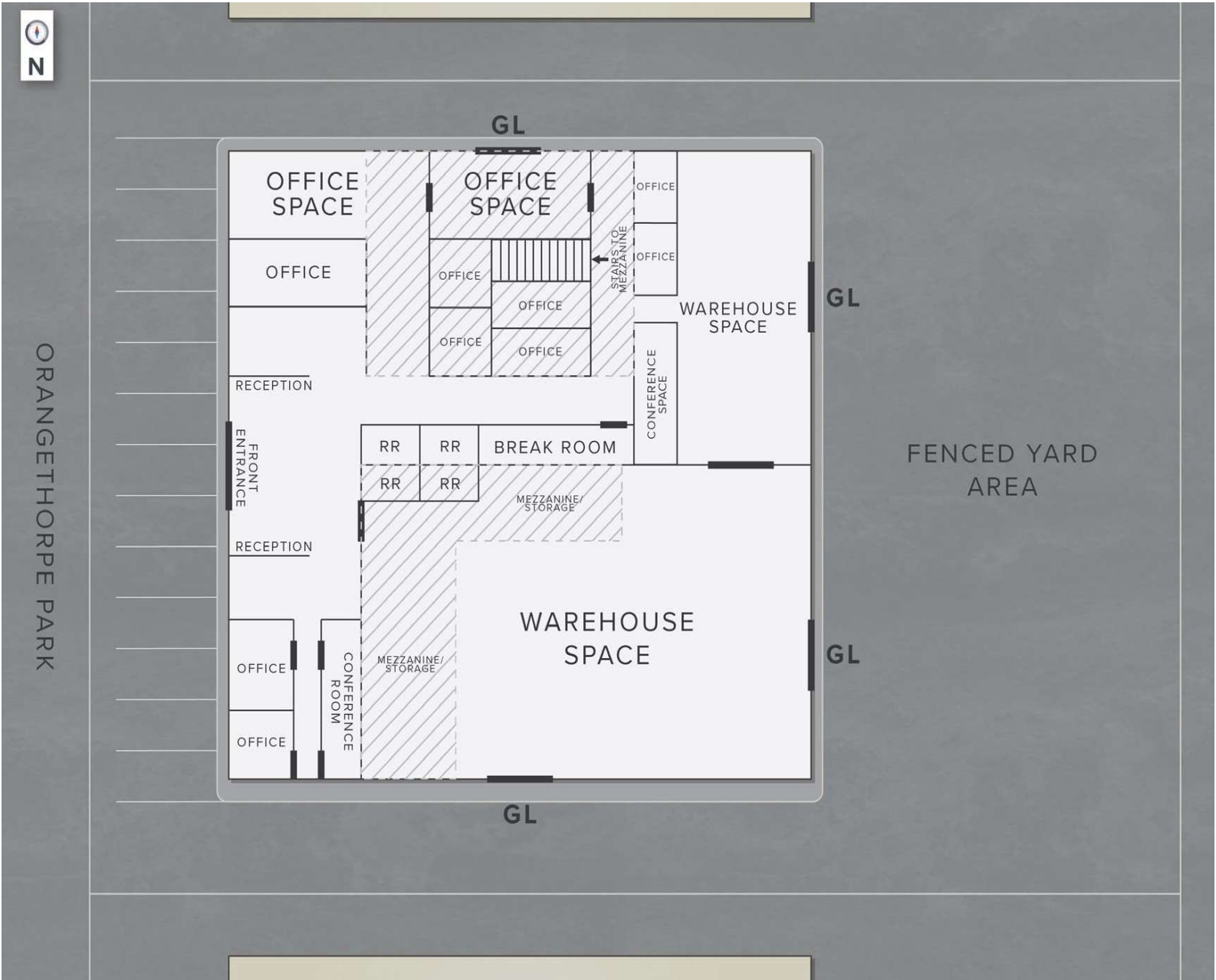
Corp DRE# 01291393

STEVEN CRANE
Executive Vice President
(714) 856-2923
CA DRE Lic# 00844752
SteveC@ashwillassociates.com

GARY MARTINEZ, CCIM, SIOR
Senior Vice President
(714) 905-9383
CA DRE Lic# 01318932
gary@ashwillassociates.com

FLOOR/SITE PLAN

1812-1818 N. ORANGETHORPE PARK | ANAHEIM, CA 92801



Website: www.OrangethorpePark.com



Corp DRE# 01291393

STEVEN CRANE
Executive Vice President
(714) 856-2923
CA DRE Lic# 00844752
SteveC@ashwillassociates.com

GARY MARTINEZ, CCIM, SIOR
Senior Vice President
(714) 905-9383
CA DRE Lic# 01318932
gary@ashwillassociates.com