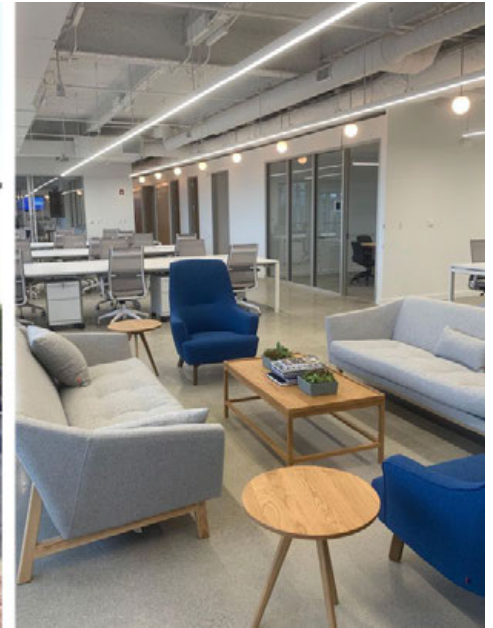


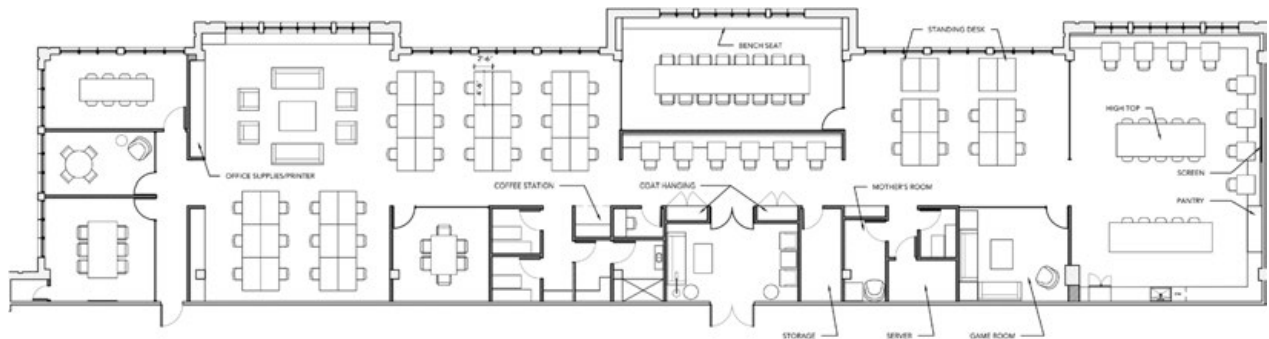
DOWNTOWN DEERFIELD

OFFICE SPACE FOR LEASE: 740 Waukegan, Suite 400 • Deerfield, IL



6,932 SQUARE FEET AVAILABLE Office Space at The Shops at Deerfield Square

- The most prominent office suite in the development, at the top floor, overlooking Deerfield Square
- Move-in ready condition with high-end finishes throughout
- Open floorplan with sunlight flooding the entire workspace
- Walking distance to Metra stop in Deerfield
- Mixed use development that includes Whole Foods, Walgreens, Café Zupas, Potbelly, Core Power Yoga, Chase Bank, Tricoci Salon/Spa
- 1.5 miles from Deerfield Road I-294/94 interchange



FOR EXCLUSIVE LEASING INFORMATION PLEASE CONTACT:

Chris Siavelis
csiavelis@crmproperties.com

Jeffrey Malk
jmalk@crmproperties.com



847-948-6500

All information contained herein is deemed reliable but is subject to errors, omissions, change in status or withdrawal without notice

DOWNTOWN DEERFIELD

OFFICE SPACE FOR LEASE: 740 Waukegan, Suite 400 • Deerfield, IL



FOR EXCLUSIVE LEASING INFORMATION PLEASE CONTACT:

Chris Siavelis
csiavelis@crmproperties.com

Jeffrey Malk
jmalk@crmproperties.com

847-948-6500



All information contained herein is deemed reliable but is subject to errors, omissions, change in status or withdrawal without notice