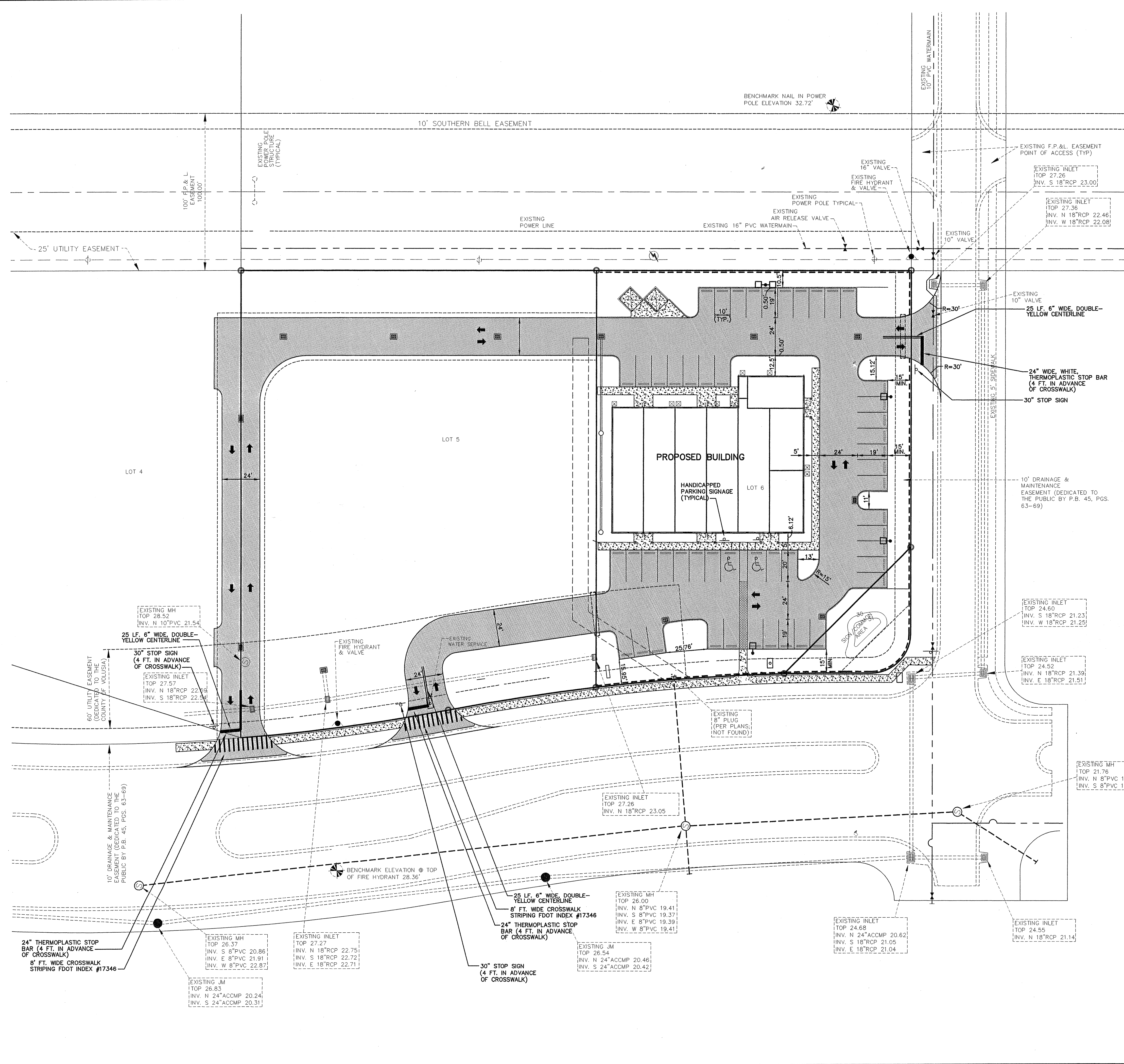


**LEGEND**

	EXISTING GRADE
	EXISTING CONTOUR
	PROPOSED GRADE
	PROPOSED CONTOUR
	PROPOSED DRAINAGE FLOW PATTERN
	6" THICK CONCRETE PAVEMENT 3,000 P.S.I. @ 28 DAYS ON 12" STABILIZED SUBGRADE
	1-1/2" ASPHALTIC CONCRETE-TYPE S-111 6" LIMEROCK (LBR-100) 6" STABILIZED SUBBASE (LBR-40)



NO.	DATE	DESCRIPTION	BY
REVISIONS			
<b>PARKER MYNCHENBERG &amp; ASSOCIATES, INC.</b>			
PROFESSIONAL ENGINEERS * LANDSCAPE ARCHITECTS			
1729 RIDGEWOOD AVENUE HOLLY HILL, FLORIDA 32117			
(386) 677-6891 FAX (386) 677-2114 E-MAIL: info@parkermynchenberg.com			
CERTIFICATE OF AUTHORIZATION #00003910			
<b>SITE PLAN</b>			
<b>LOT 6</b>			
<b>HALIFAX PLANTATION VILLAGE</b>			
VOLUSIA COUNTY * FLORIDA			
FILE NO.	HPVILLAGE-SP	DESIGNER: P.MYNCHENBERG	FEB 07 2008 SEAL
DATE:	12.10.07	CADD TECH: C.HARNDEN	
SCALE:	1" = 30'	SHEET 3 OF 13	