

# #104, 4116 64 AVENUE SE

Industrial Buildings: Standard Methods of Measurement ANSI/BOMA Z65.2—2019 - Calgary, AB

## AREA SUMMARY

MAIN LEVEL GROSS LEASABLE AREA - 2,141 Sq.Ft. / 198.9 m<sup>2</sup>

2nd LEVEL GROSS LEASABLE AREA - 1,092 Sq.Ft. / 101.4 m<sup>2</sup>

TOTAL GROSS LEASABLE AREA - 3,233 Sq.Ft. / 300.3 m<sup>2</sup>

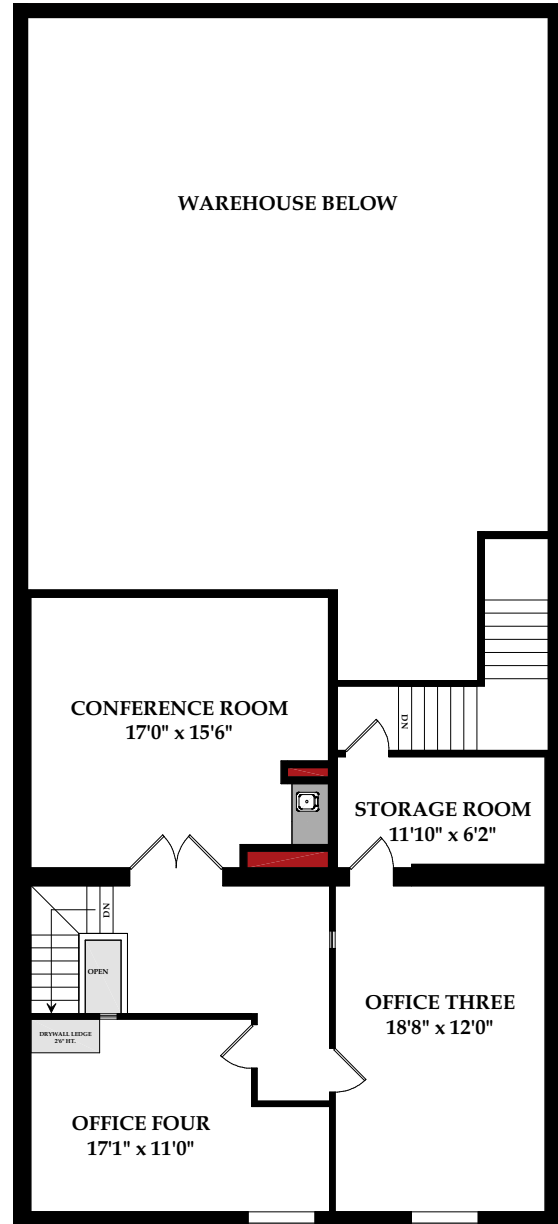
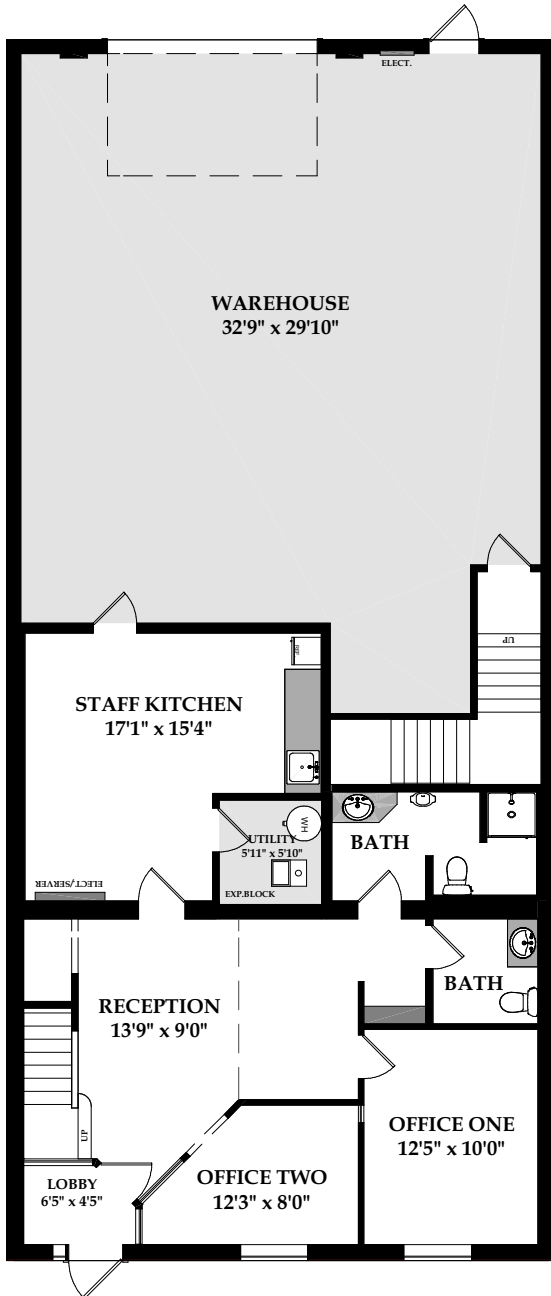
DATE COMPLETED: AUGUST 8, 2024

PROPERTY TYPE: COMMERCIAL

PAUL LOUITT / CENTURY 21 BAMBER

# CENTURY 21<sup>®</sup>

## Bamber Realty Ltd.



GROSS LEASABLE AREA OF UNIT COMPLETED ONLY - AS REQUESTED. SHARED RATIO / GROSS UP FACTOR OF BUILDING COMMON AREAS NOT AVAILABLE WITHOUT ACCESS TO ALL SUITES AND AREAS OF ENTIRE COMPLEX