

OFFICE SUBLEASE AVAILABLE

7701 FRANCE AVENUE

3,565 RSF | SUITE 325



CUSHMAN &
WAKEFIELD

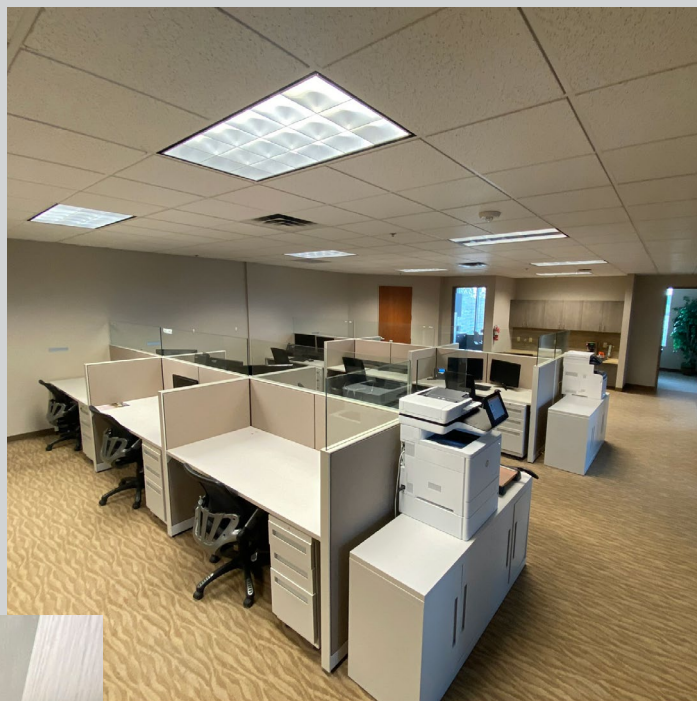
FOR SUBLEASE

7701 FRANCE AVE

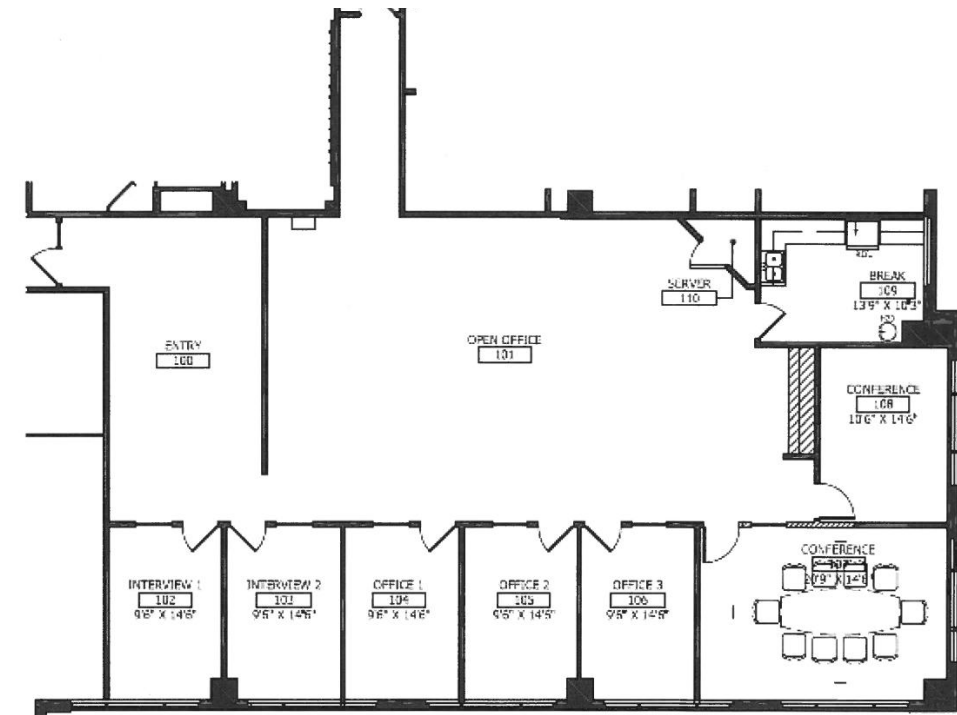
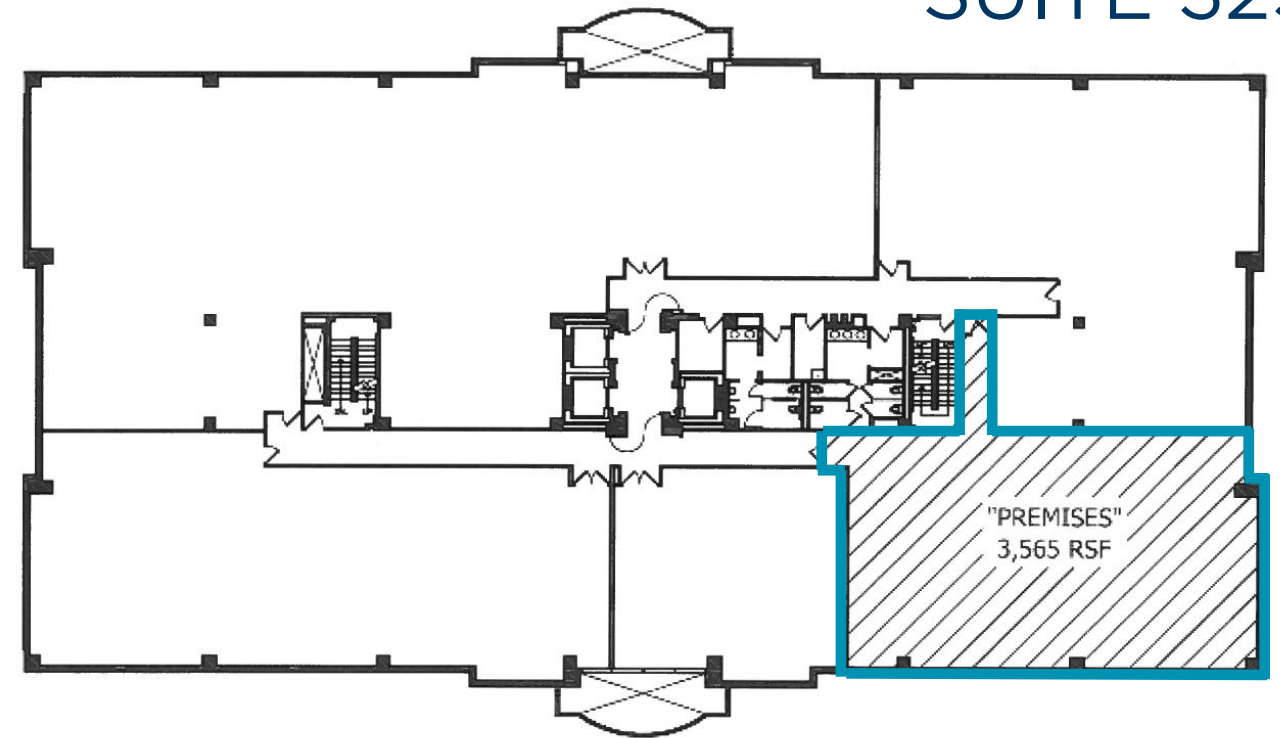
3,565 RSF | SUITE 325

Property Highlights

- 3,565 SF office space
- Price: \$20.00 Gross PSF
- Lease Expiration: July 31, 2023
- Furniture included
- On-site meeting and conference facilities
- On-site property management
- City of Edina's Centennial Lakes Park which consists of 24 acres, 1.5 miles of paved walking paths, amphitheater, paddle boat rental, ice skating, bent grass putting green & lawn games
- Easy access to I-494 and Highway 100



FLOOR PLAN SUITE 325



BILL ROTHSTEIN

+1 952 893 8214

bill.rothstein@cushwake.com

FOR SUBLEASE

7701 FRANCE AVE

3,565 RSF | SUITE 325



©2020 Cushman & Wakefield. All rights reserved. The information contained in this communication is strictly confidential. This information has been obtained from sources believed to be reliable but has not been verified. NO WARRANTY OR REPRESENTATION, EXPRESS OR IMPLIED, IS MADE AS TO THE CONDITION OF THE PROPERTY (OR PROPERTIES) REFERENCED HEREIN OR AS TO THE ACCURACY OR COMPLETENESS OF THE INFORMATION CONTAINED HEREIN, AND SAME IS SUBMITTED SUBJECT TO ERRORS, OMISSIONS, CHANGE OF PRICE, RENTAL OR OTHER CONDITIONS, WITHDRAWAL WITHOUT NOTICE, AND TO ANY SPECIAL LISTING CONDITIONS IMPOSED BY THE PROPERTY OWNER(S). ANY PROJECTIONS, OPINIONS OR ESTIMATES ARE SUBJECT TO UNCERTAINTY AND DO NOT SIGNIFY CURRENT OR FUTURE PROPERTY PERFORMANCE.