

+/- 341 ACRES AVAILABLE | PASADENA, TX



ASKING PRICE: \$35,000,000

**LARGEST AREA INDUSTRIAL INFRASTRUCTURE SITE**

[WWW.PASADENAREDEVELOPMENT.COM](http://WWW.PASADENAREDEVELOPMENT.COM)





  
**PASADENA**  
REDEVELOPMENT



Enterprise Products

ENERGY TRANSFER

Stolt-Nielsen

BWC Terminals  
BULK LIQUID STORAGE

DELIVERY 8

INEOS

BASF

BUCKEYE PARTNERS, L.P.

CALPINE

ARKEMA

Vulcan  
Materials Company

ARGOS

ALBEMARLE

WATCO

MAGELLAN  
MIDSTREAM PARTNERS, L.P.

Chevron  
Phillips  
Chemical Company LP

INTEROCEANIC  
Energy Services Corporation

+/- 142 Acres

+/- 199 Acres

ExxonMobil

KINDER MORGAN  
INC.







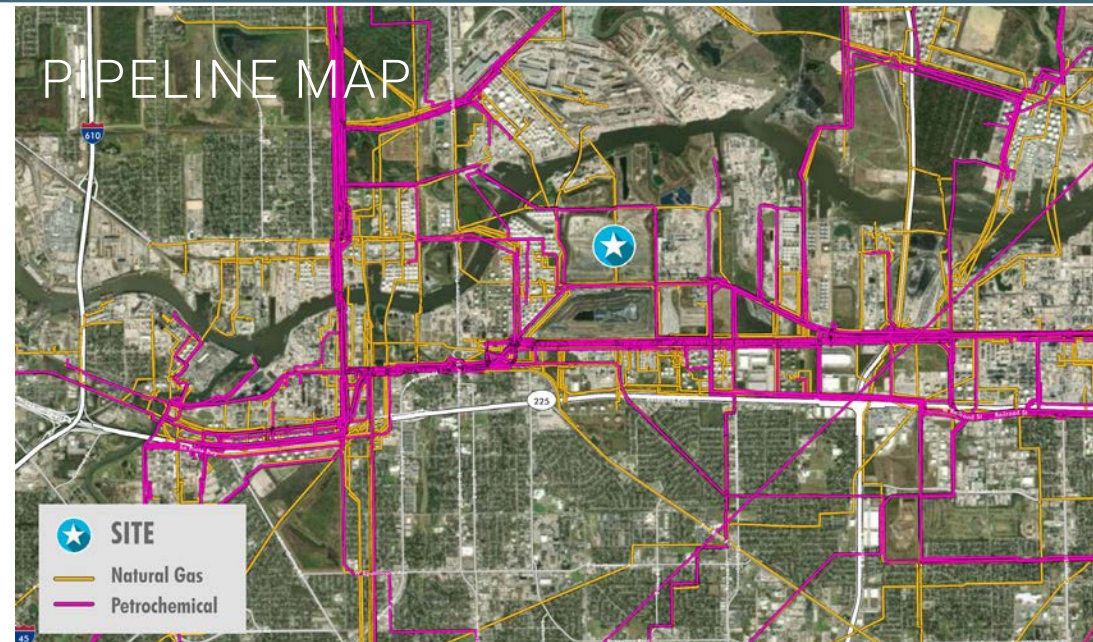
## EXCEPTIONAL OPPORTUNITY

**Linear** - Rectangle parcels/more usable acreage than non-conventional parcels

**Easement** - Access to an extensive piping network including natural gas, oxygen, nitrogen, ammonia etc.

**Rail** - The property is directly adjacent to the PTRA providing access to both the BNSF and UP railroads

**Opportunity Zone** -Purchaser may qualify for credits given designation





**+/-341 ACRES AVAILABLE | PASADENA, TX**



**PASADENA**  
REDEVELOPMENT

[WWW.PASADENAREDEVELOPMENT.COM](http://WWW.PASADENAREDEVELOPMENT.COM)

**CBRE**

**Andrew Jewett Sr.**

+1 713 577 1735

[andrew.jewett@cbre.com](mailto:andrew.jewett@cbre.com)

**Collin Grimes**

+1 713 309 5229

[collin.grimes@jll.com](mailto:collin.grimes@jll.com)

**Bill Boyer**

+1 713 881 0919

[bill.boyer@cbre.com](mailto:bill.boyer@cbre.com)

©2024 CBRE, Inc. All rights reserved. This information has been obtained from sources believed reliable, but has not been verified for accuracy or completeness. You should conduct a careful, independent investigation of the property and verify all information. Any reliance on this information is solely at your own risk. CBRE and the CBRE logo are service marks of CBRE, Inc. All other marks displayed on this document are the property of their respective owners, and the use of such logos does not imply any affiliation with or endorsement of CBRE. Photos herein are the property of their respective owners. Use of these images without the express written consent of the owner is prohibited.

**CBRE**