

# FOR SALE

## Freestanding Industrial Property

# CBRE

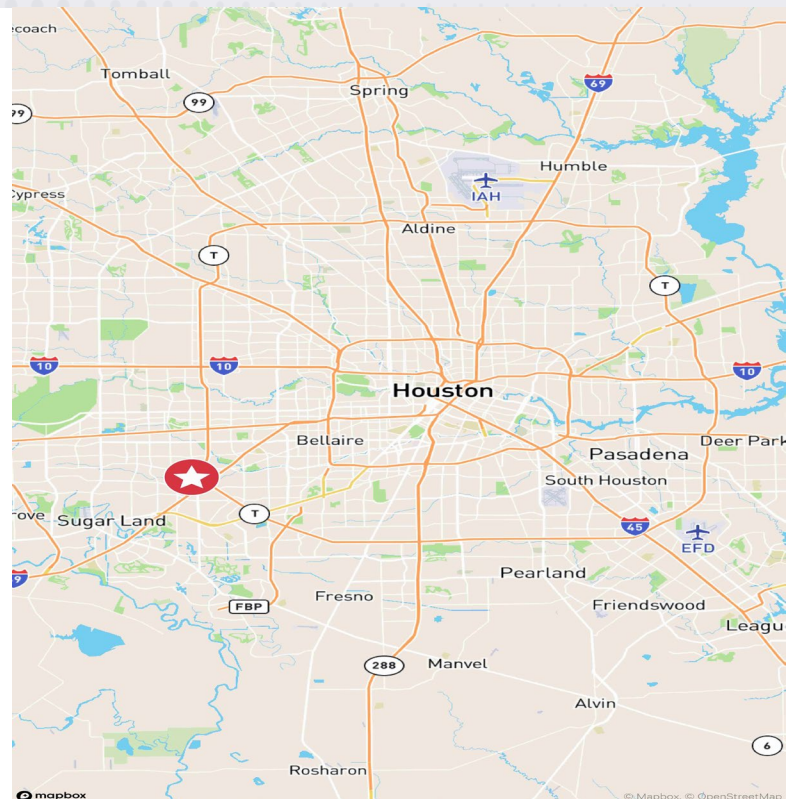


# 10860 ROCKLEY RD

## Houston, TX 77099

### Property Highlights

- Building Size: 34,279 SF
- Land Area: 3.21 AC
- Warehouse: 24,642 SF
- Office/Showroom: 9,637 SF
- Power: 3 Phase/480 Volt/1000 amps
- Optimal for Manufacturing Use
- Fully Sprinklered
- Fully Fenced and Gated
- Exterior building and parking lot lighting
- Warehouse Clear Height: 14'
- Dropped ceiling throughout Warehouse (12' ceiling)
- HVAC infrastructure in place
- Loading Access:
  - 2 Dock-high OH doors (1 with pit leveler)
  - 1 Grade Level OH door
- Concrete paved outside storage
- 5 existing restrooms
- Located in deed restricted Southwest Business Park
- Sale Price: \$4,595,000





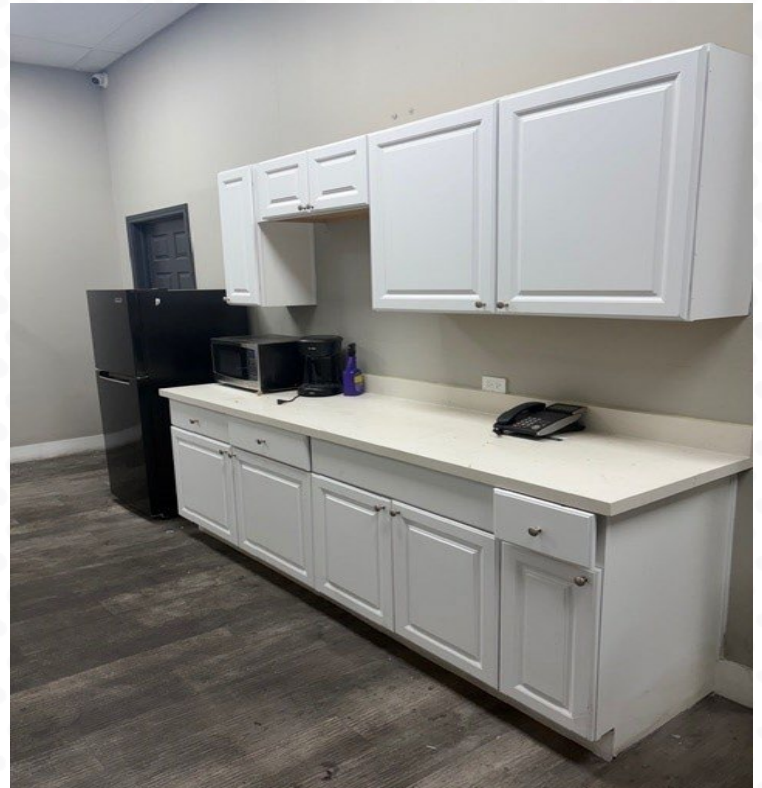
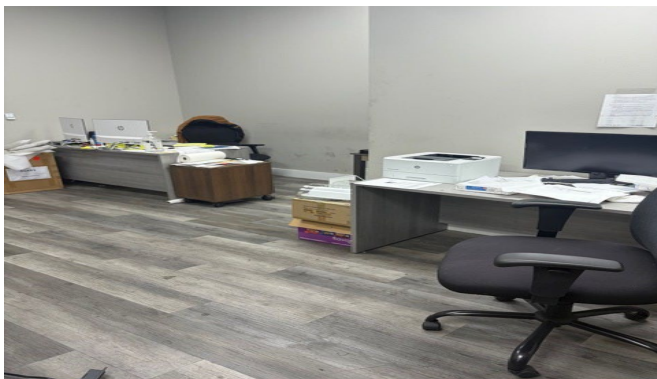
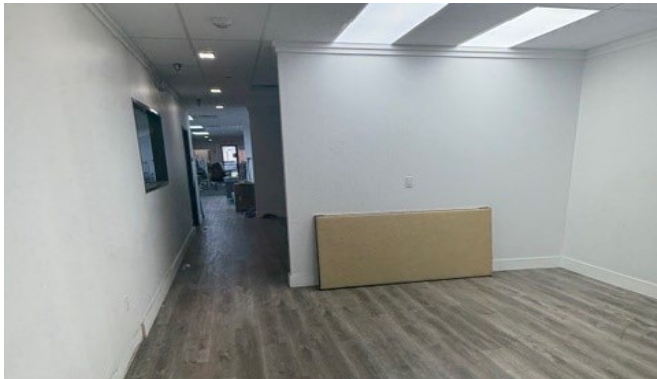
# WAREHOUSE INTERIOR PHOTOS

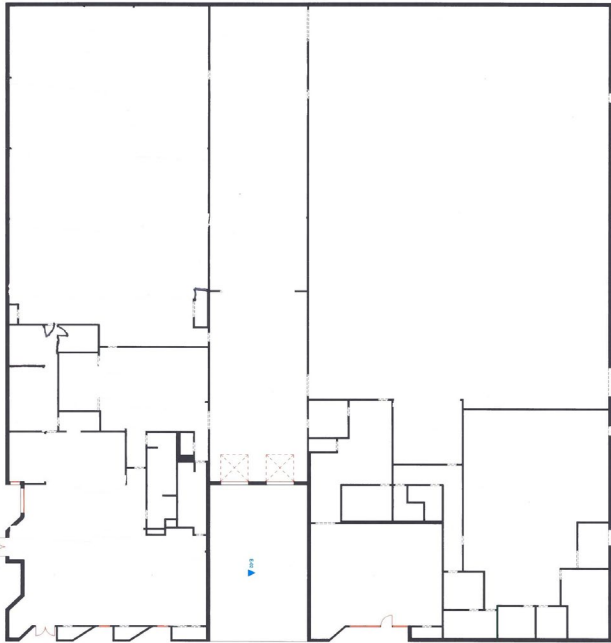
---



# OFFICE INTERIOR PHOTOS

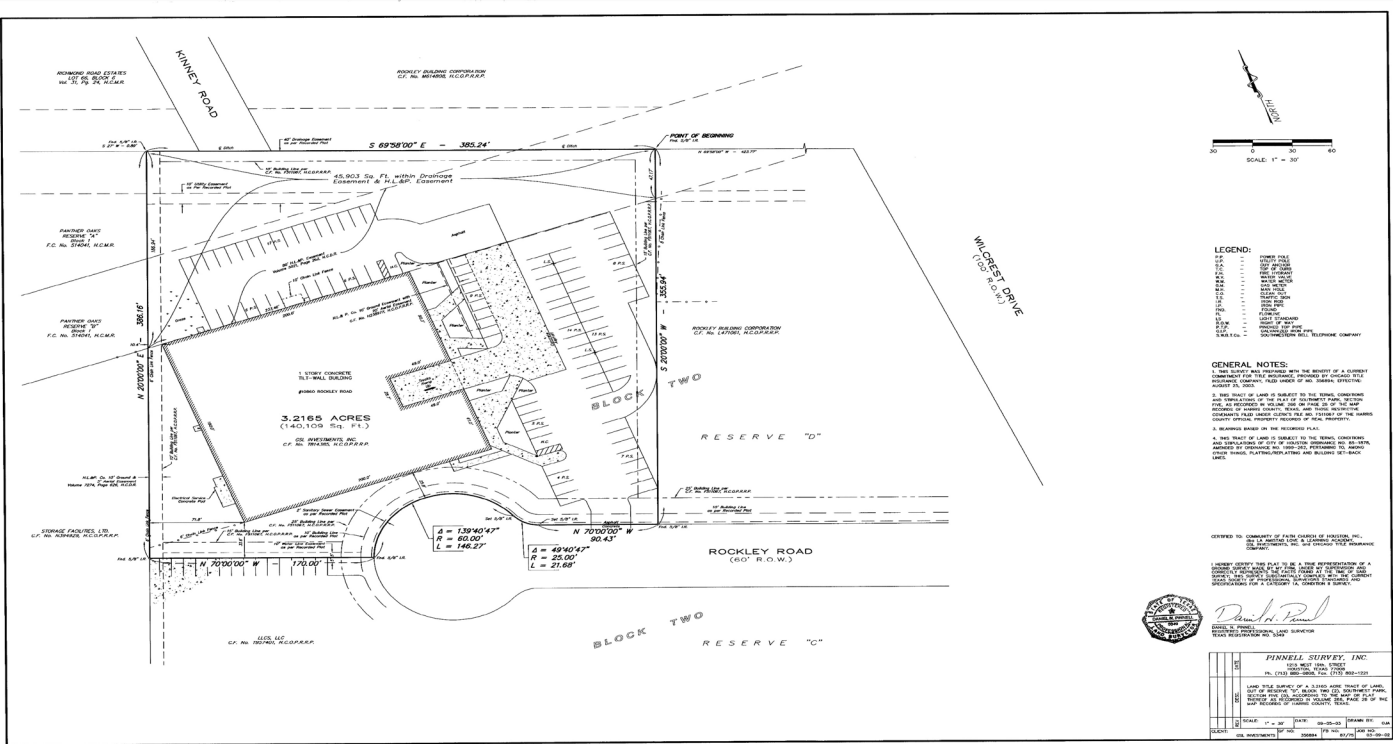
---





Office/Showroom: 9,637 SF  
Warehouse: 24,642 SF  
Building Size: 34,279 SF

SURVEY





# DOCK-HIGH LOADING ACCESS

**CBRE**



## AERIAL



### CONTACT BROKERS FOR MORE INFO

**Steve King**  
First Vice President  
+1 713 577 1617  
[steve.king@cbre.com](mailto:steve.king@cbre.com)

**Wesley King**  
Senior Associate  
+1 713 577 1582  
[wesley.king@cbre.com](mailto:wesley.king@cbre.com)

© 2025 CBRE, Inc. All rights reserved. This information has been obtained from sources believed reliable but has not been verified for accuracy or completeness. CBRE, Inc. makes no guarantee, representation or warranty and accepts no responsibility or liability as to the accuracy, completeness, or reliability of the information contained herein. You should conduct a careful, independent investigation of the property and verify all information. Any reliance on this information is solely at your own risk. CBRE and the CBRE logo are service marks of CBRE, Inc. All other marks displayed on this document are the property of their respective owners, and the use of such marks does not imply any affiliation with or endorsement of CBRE. Photos herein are the property of their respective owners. Use of these images without the express written consent of the owner is prohibited.