

FOR LEASE

RETAIL PROPERTY



WEST CENTRAL PLAZA- STE 474

471 WEST CENTRAL STREET, FRANKLIN, MA 02038

For More Information

DAVE ELLIS

781.919.0800 x701
dave@ellisrealtyadvisors.com

DANIEL MORTON

781.919.0800 x715
Dmorton@ellisrealtyadvisors.com



WEST CENTRAL PLAZA- STE 474



PROPERTY DESCRIPTION

Located on bustling Route 140, and minutes from Franklin Village Plaza, this prime commercial space in West Central Plaza offers excellent visibility and consistent vehicle and foot traffic. Current tenants include Gentle Dental, Jersey Mike's, Franklin Physical Therapy, and Divine Nail Salon. Suite 474 was previously a Sport Clips.

PROPERTY HIGHLIGHTS

- Glass frontage
- 200 Amp breaker
- Full Alarm System
- Built in wall vacuums
- Washer/Dryer hookups
- Ceiling Speaker System

OFFERING SUMMARY

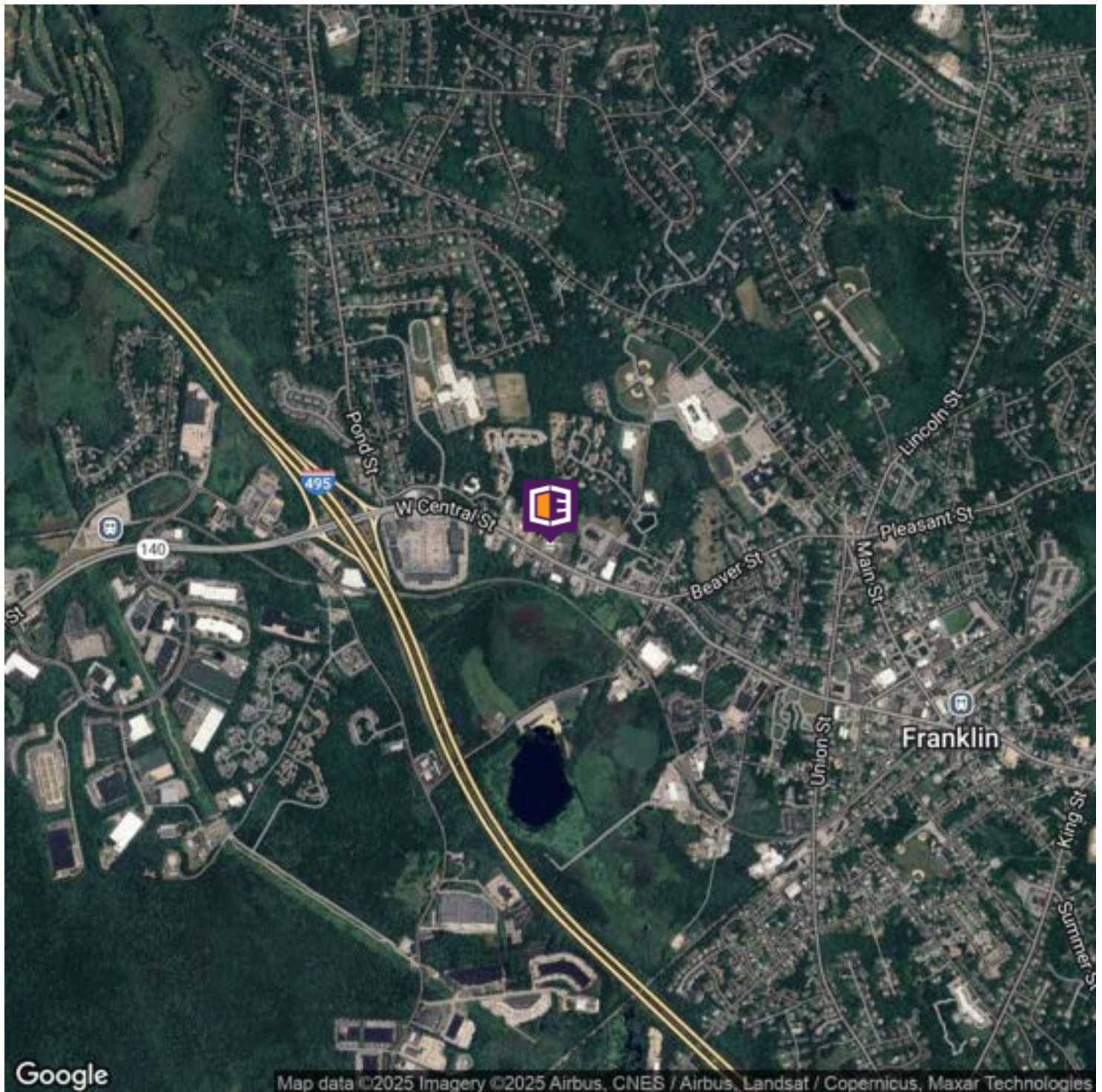
Lease Rate:	Inquire
Available SF:	1,560 SF
Building Size:	10,040 SF

DEMOGRAPHICS	0.3 MILES	0.5 MILES	1 MILE
Total Households	96	395	1,972
Total Population	211	868	5,332
Average HH Income	\$152,195	\$150,946	\$158,098

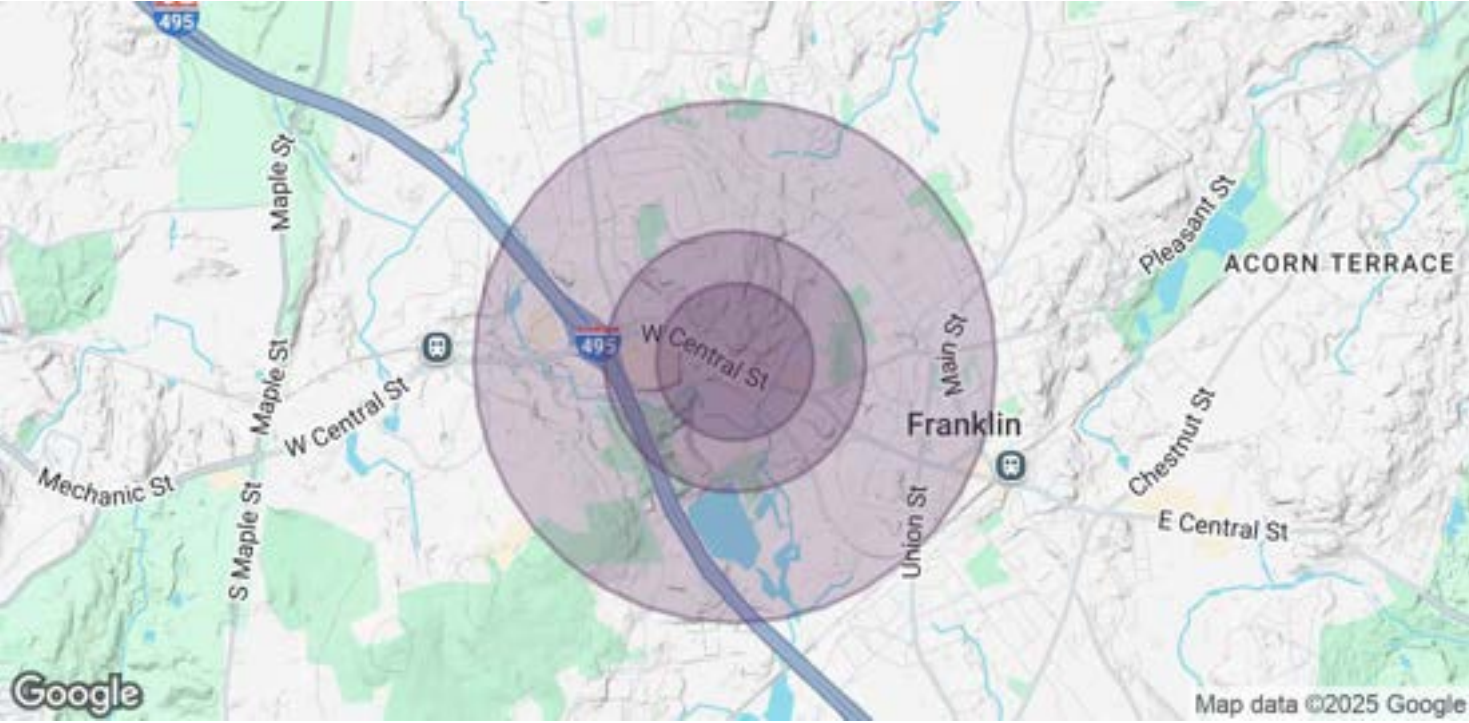
WEST CENTRAL PLAZA- STE 474



WEST CENTRAL PLAZA- STE 474



WEST CENTRAL PLAZA- STE 474



POPULATION	0.3 MILES	0.5 MILES	1 MILE
Total Population	211	868	5,332
Average Age	44	44	40
Average Age (Male)	42	42	39
Average Age (Female)	46	46	41

HOUSEHOLDS & INCOME	0.3 MILES	0.5 MILES	1 MILE
Total Households	96	395	1,972
# of Persons per HH	2.2	2.2	2.7
Average HH Income	\$152,195	\$150,946	\$158,098
Average House Value	\$459,763	\$466,039	\$544,842

Demographics data derived from AlphaMap