



FOR LEASE

Ruffin Mill Center

16001-16071 Continental Blvd
S. Chesterfield, VA 23834



PROPERTY HIGHLIGHTS

- Well-maintained, four building business park with hands on property management
- Available spaces vary from majority warehouse to office intensive
- Ample on-site parking
- Dock and drive-in loading doors
- I-2 zoning in Chesterfield County to accommodate a variety of uses
- Easy access to I-95 at Woods Edge Road (Exit 58) and nearby amenities



Grant Holzbach

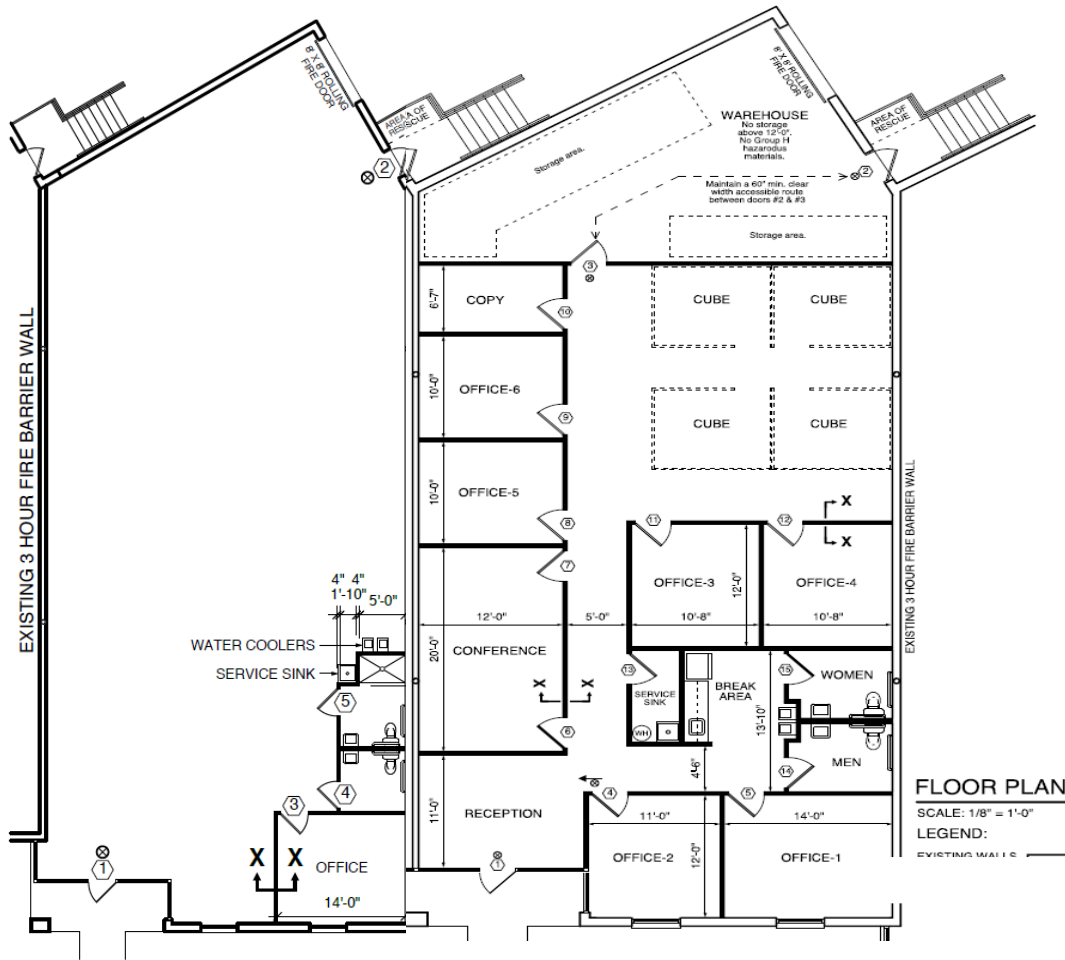
Chris Avellana

T +1 804 200 6417
grant.holzbach@jll.com

T +1 804 200 6468
chris.avellana@jll.com

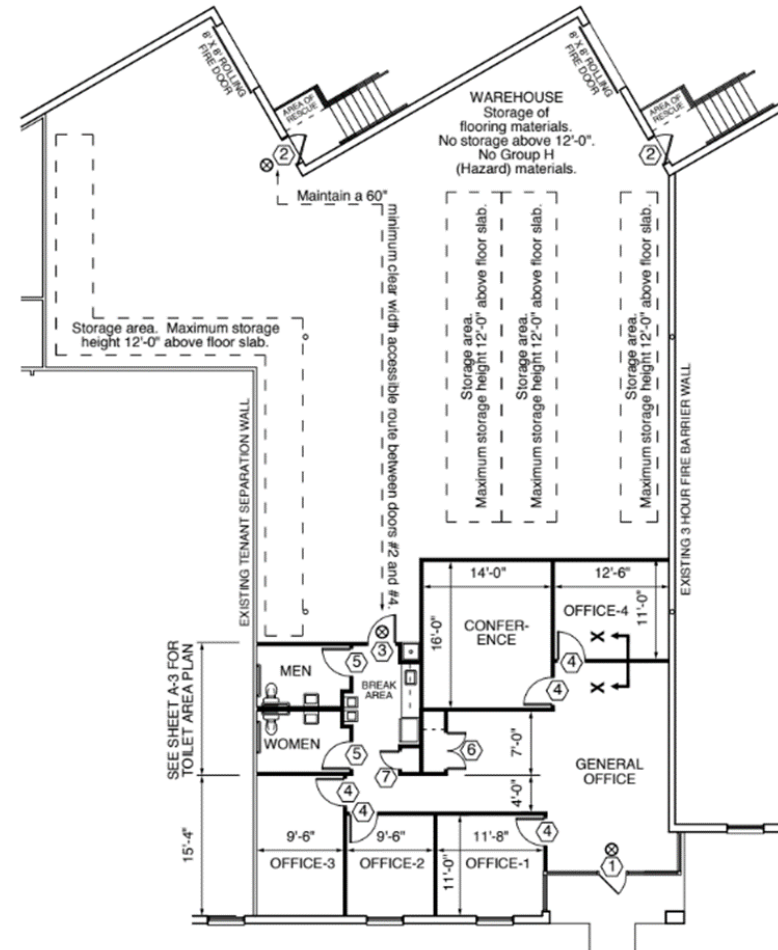


FLOOR PLANS



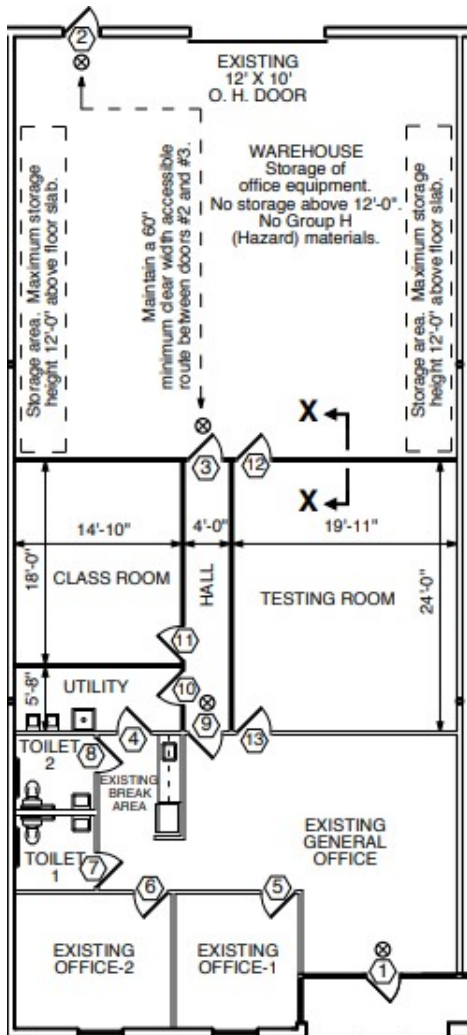
FLOOR PLAN
SCALE: 1/8" = 1'-0"
LEGEND:
EXISTING WALLS

Suite 16005 & 16007:
3,600 – 7,600 SF | Two dock doors |
Conditioned warehouse

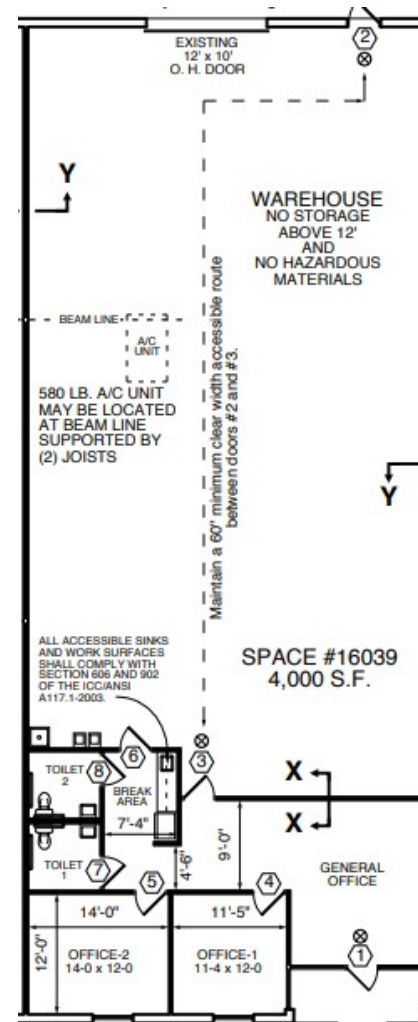


Suite 16019:
5,455 SF | Two dock doors |
Conditioned warehouse

FLOOR PLANS



Suite 16029:
3,600 SF | 1 drive-in



Suite 16039:
4,000 SF | 1 drive-in

Grant Holzbach

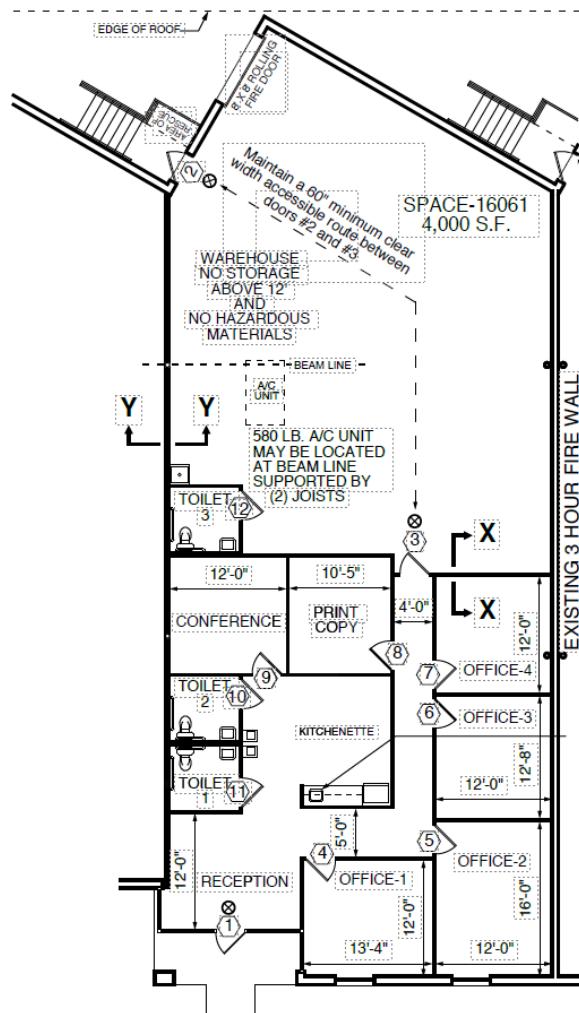
Chris Avellana

T +1 804 200 6417
grant.holzbach@jll.com

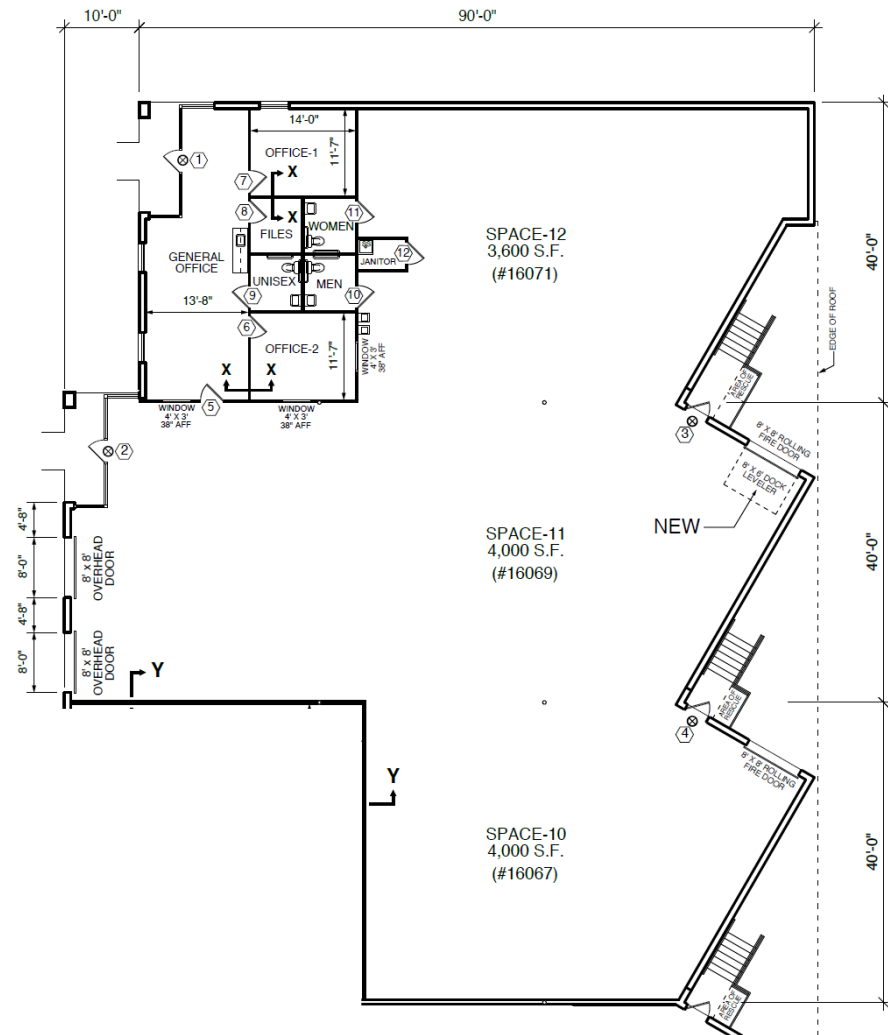
T +1 804 200 6468
chris.avellana@jll.com



FLOOR PLANS



Suite 16061:
4,000 SF | 1 dock door



Suite 16069:
10,000 SF | 2 drive-ins | 2 dock doors

Grant Holzbach

T +1 804 200 6417
grant.holzbach@jll.com

Chris Avellana

T +1 804 200 6468
chris.avellana@jll.com





Grant Holzbach

Chris Avellana

T +1 804 200 6417
grant.holzbach@jll.com

T +1 804 200 6468
chris.avellana@jll.com

Although information has been obtained from sources deemed reliable, JLL does not make any guarantees, warranties or representations, express or implied, as to the completeness or accuracy as to the information contained herein. Any projections, opinions, assumptions or estimates used are for example only. There may be differences between projected and actual results, and those differences may be material. JLL does not accept any liability for any loss or damage suffered by any party resulting from reliance on this information. If the recipient of this information has signed a confidentiality agreement with JLL regarding this matter, this information is subject to the terms of that agreement. ©2023. Jones Lang LaSalle IP, Inc. All rights reserved.

