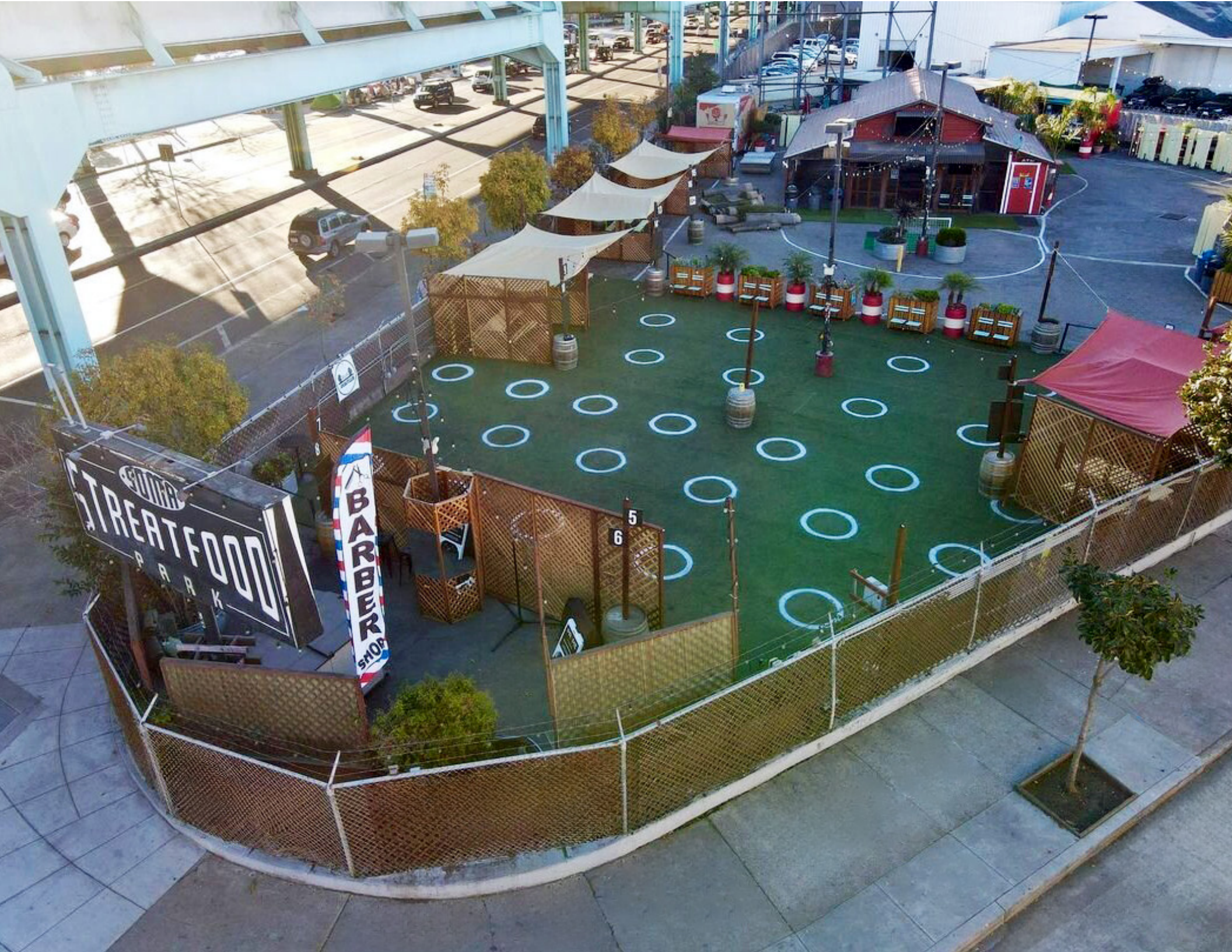


LAND FOR LEASE

428 - 436 11TH ST.
SAN FRANCISCO, CA



- Paved and Fenced Land with Utilities at 11th & Harrison, Across from Costco
- ±18,073 SF Bounded by 11th & 13th Streets
- Zoned: SALI (Service, Arts, Light Industrial)



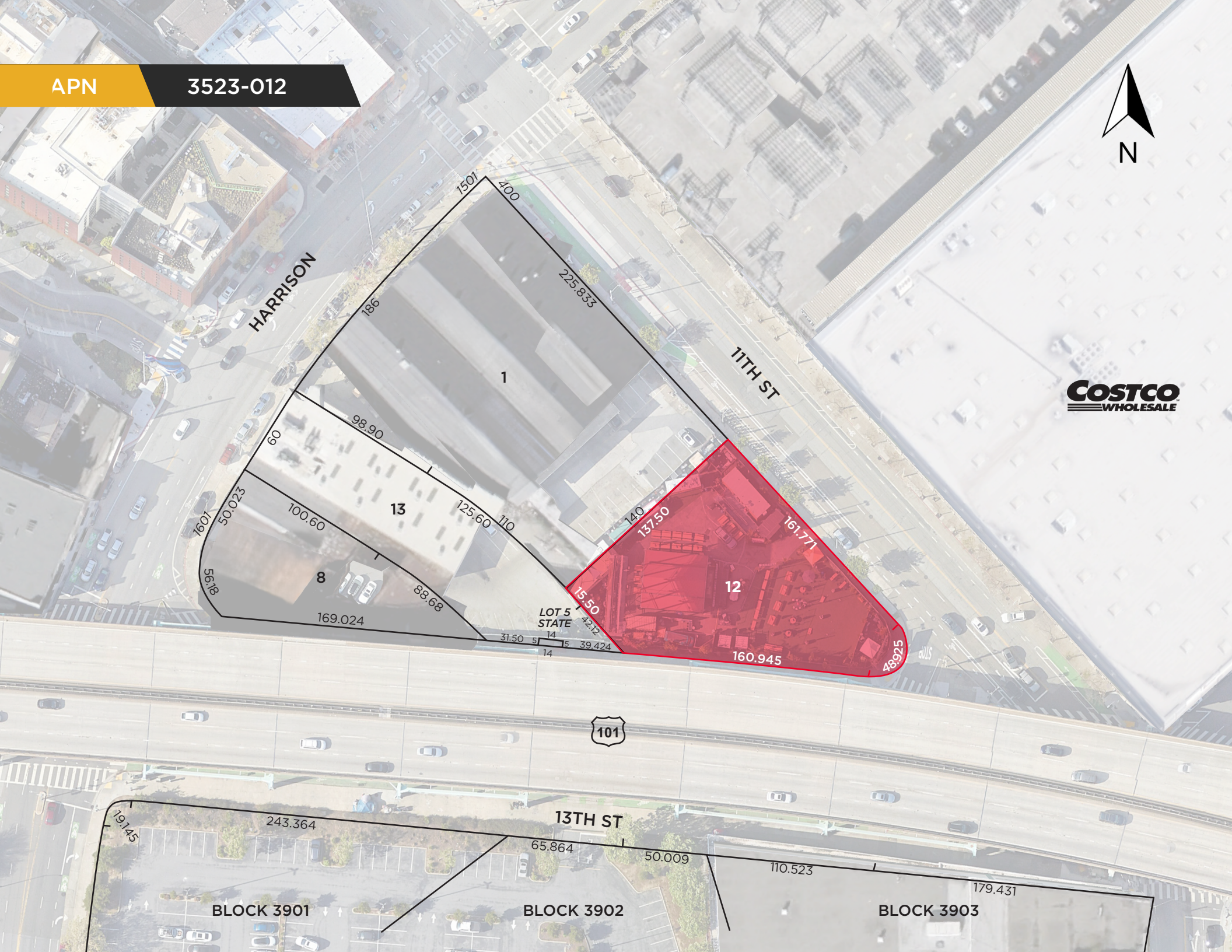


APN

3523-012



COSTCO
WHOLESALE



HARRISON

11TH ST

101

13TH ST

BLOCK 3901

BLOCK 3902

BLOCK 3903

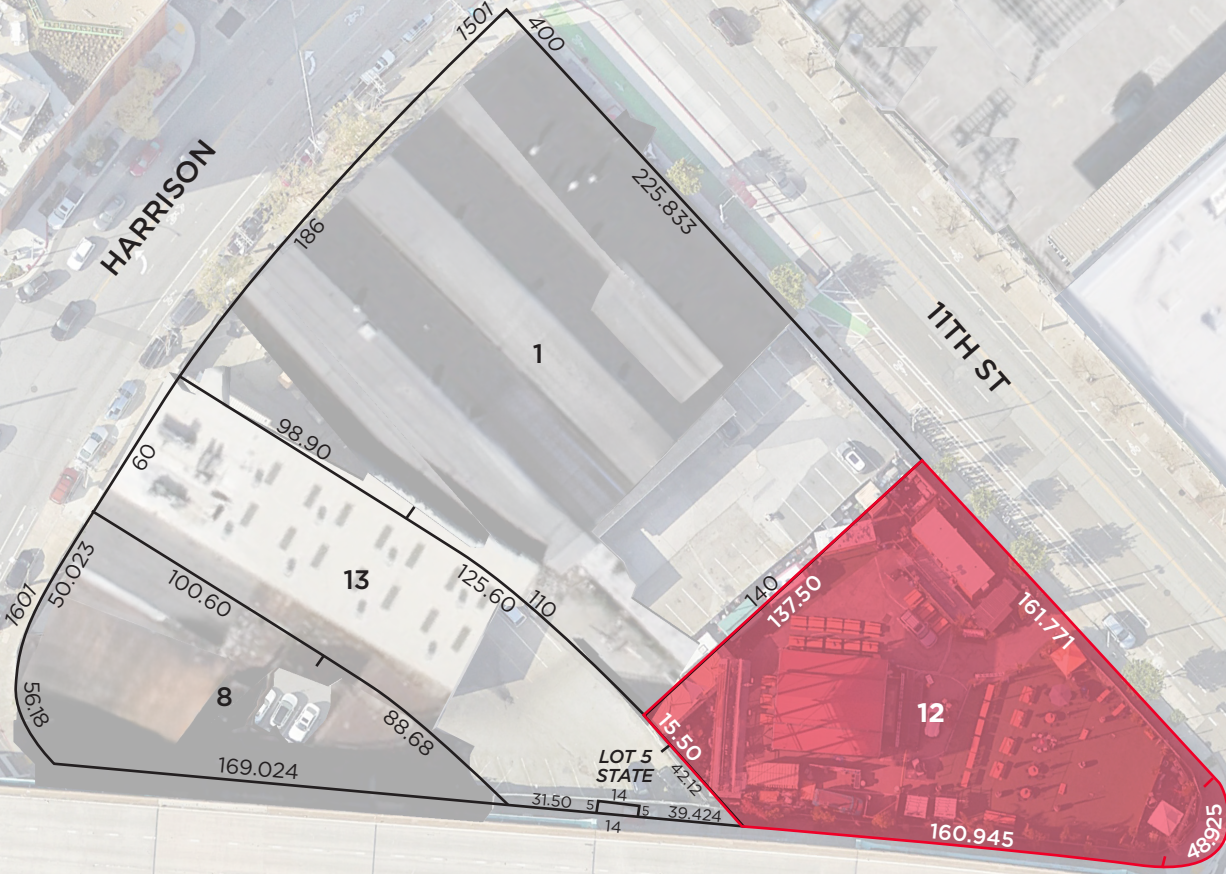
1

13

12

8

LOT 5
STATE



BÉRKELEY

OAKLAND

ALAMEDA

OAK
AIRPORT

80

280

101

428-436
11TH ST

MCALLISTER

GROVE

MARKET

HOWARD

FOLSOM

11TH ST

12TH ST

VAN NESS

SOUTH VAN NESS



©2024 Cushman & Wakefield. All rights reserved. The information contained in this communication is strictly confidential. This information has been obtained from sources believed to be reliable but has not been verified.

NO WARRANTY OR REPRESENTATION, EXPRESS OR IMPLIED, IS MADE AS TO THE CONDITION OF THE PROPERTY (OR PROPERTIES) REFERENCED HEREIN OR AS TO THE ACCURACY OR COMPLETENESS OF THE INFORMATION CONTAINED HEREIN, AND SAME IS SUBMITTED SUBJECT TO ERRORS, OMISSIONS, CHANGE OF PRICE, RENTAL OR OTHER CONDITIONS, WITHDRAWAL WITHOUT NOTICE, AND TO ANY SPECIAL LISTING CONDITIONS IMPOSED BY THE PROPERTY OWNER(S). ANY PROJECTIONS, OPINIONS OR ESTIMATES ARE SUBJECT TO UNCERTAINTY AND DO NOT SIGNIFY CURRENT OR FUTURE PROPERTY PERFORMANCE.

TOM CHRISTIAN

+1 415 509 8875
tom.christian@cushwake.com
CA LIC #00890910

TIM GARLICK

+1 415 596 8887
tim.garlick@cushwake.com
CA LIC #0171593

425 Market Street, Suite 2300
San Francisco, CA 94105
cushmanwakefield.com