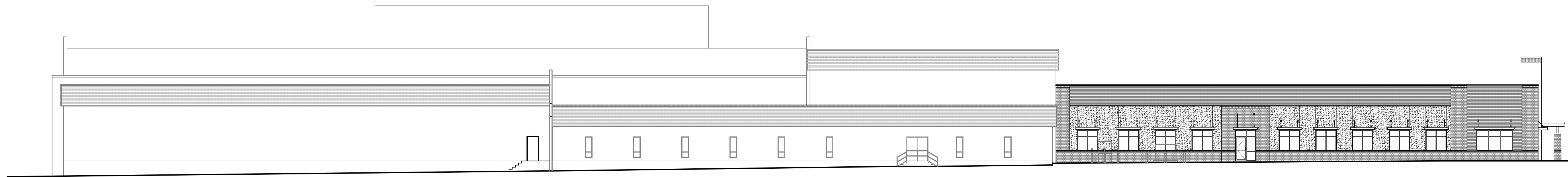


NORTH EXTERIOR ELEVATION

SCALE - 1/8" = 1'-0"



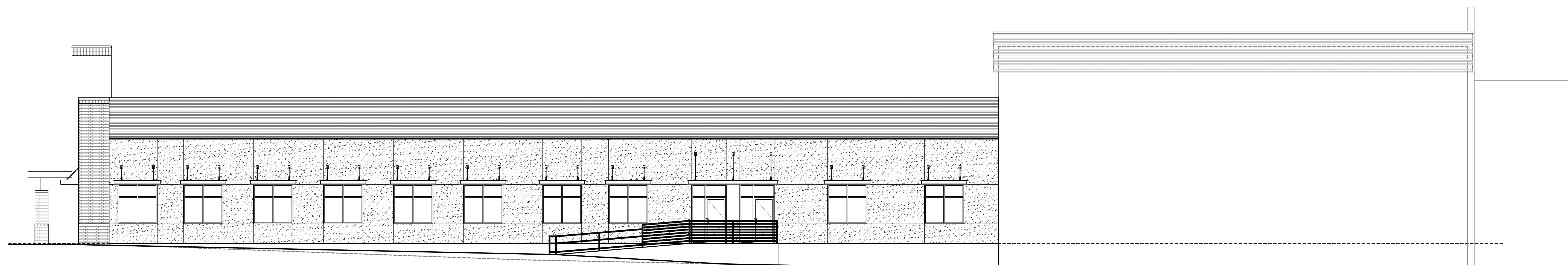
OVERALL EAST EXTERIOR ELEVATION

SCALE - 1/16" = 1'-0"



PARTIAL EAST EXTERIOR ELEVATION

SCALE - 1/8" = 1'-0"



PARTIAL WEST EXTERIOR ELEVATION

SCALE - 1/8" = 1'-0"

PRELIMINARY NOT
FOR CONSTRUCTION
THIS DOCUMENT IS RELEASED FOR PRELIMINARY
REVIEW PURPOSES ONLY AND IS NOT INTENDED
FOR CONSTRUCTION PERMIT OR REGULATORY
APPROVAL.

NEWS HERALD
OFFICE ADDITION
501 W. 11TH STREET
PANAMA CITY, FLORIDA

DW ARCHITECTS
ARCHITECTURAL DESIGN
DARREN P. WATSON, AIA
(800) 548-0860
darren@dpwarchitects.com
5102 9th Street
Lubbock, Texas 79424

REVISION

JCB
DATE - FEB. 16, 2014
SHEET

A2

1