

For Lease

\$2.25

PSF MG (est. \$0.10/SF)

Contact us:

John Hans, SIOR

Senior VP

License #00930565

Office: +1 805 544 3900

john.hans@colliers.com

Ryan Evans

Associate

License #02245461

Office: +1 805 544 3900

ryan.evans@colliers.com

Colliers | San Luis Obispo
1301 Chorro Street
San Luis Obispo, CA 93401
P: +1 805 544 3900
www.colliers.com

3558 Skyway Drive, Ste A1 Santa Maria, CA

Retail/Office Building
in Skyway Center

Property Summary

This versatile 550 SF suite offers an excellent opportunity for a small retail or office user seeking a convenient and professional setting within the Skyway Commercial Center. The space features an open layout suitable for a variety of business types and includes a dedicated storage room, providing added functionality.

Located within a well-maintained complex with a strong tenant mix and easy access to major roadways, this suite is ideal for businesses looking to establish a presence in a highly accessible Santa Maria location.

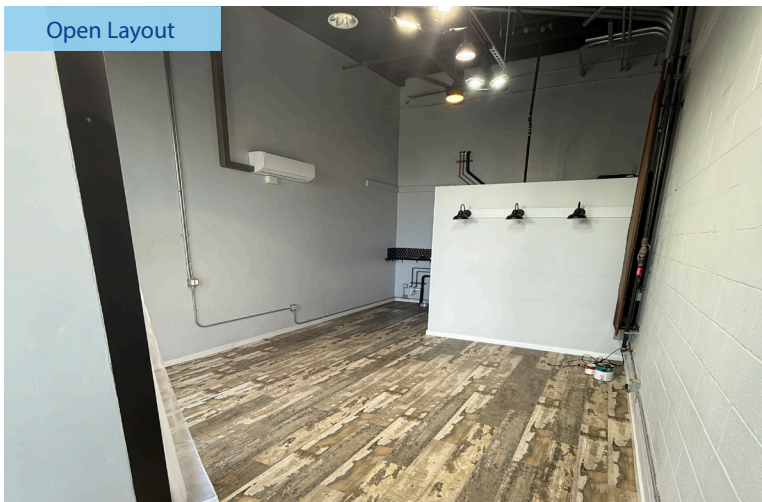
Size	± 550 SF
Rate	\$2.25 PSF MG (est. \$0.10/SF)
Property Type	Retail or Office
Zoning	C-2 (General Commercial District)
Center Tenants	Cottage Health Urgent Care, 805 Charcuterie, Fire and Vice, Oak and Iron Fitness, Pure Pilates and The Collective
Parking	Ample

Photo Gallery

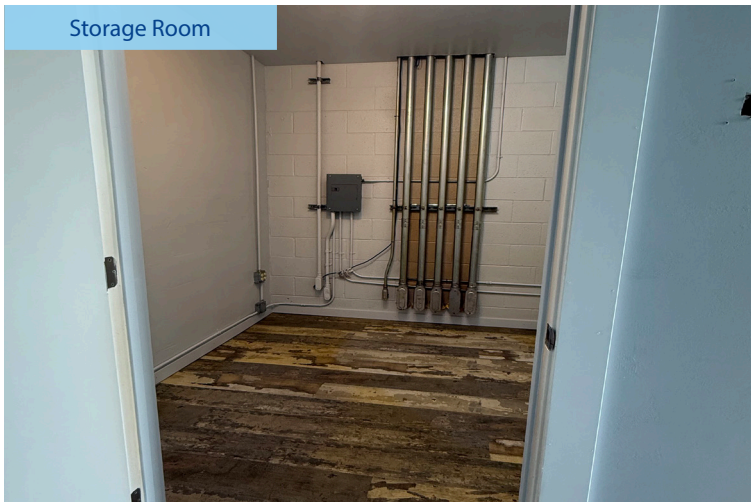
Entrance



Open Layout



Storage Room



Neighboring Tenants



Aerial



Neighboring Tenants





Demographics by Drive Times (1/5/10 Minutes from Subject)

Distance >	1 Minute Drive Time		5 Minute Drive Time		10 Minute Drive Time	
	Current (2023)	Forecast (2028)	Current (2023)	Forecast (2028)	Current (2023)	Forecast (2028)
Population	8,336	8,409	118,246	118,861	167,465	169,368
Households	2,848	2,883	34,951	35,407	48,209	49,139
Families	2,076	2,098	25,918	26,241	36,469	37,167
Avg. HH Size	2.92	2.91	3.36	3.33	3.45	3.42
Owner Occupied	2,232	2,241	19,553	19,791	28,581	29,348
Renter Occupied	616	642	15,398	15,616	19,628	19,791
Median Age	41.9	42.4	34.1	35.4	33.8	35.1
Median HH Income	\$94,931	\$105,275	\$82,205	\$92,022	\$81,868	\$91,869
Avg HH Income	\$118,148	\$136,562	\$108,420	\$125,169	\$108,176	\$124,970

¹ Footnote: Data sourced from U.S. Census Bureau, Census Summary File 1. Current and 5 year projections as recorded by ESRI forecast data.

john.hans@colliers.com

Ryan Evans

Associate

License #02245461

Office: +1 805 544 3900

ryan.evans@colliers.com