

Office Space ... Reimagined



What if the space your business needs could be more than just office space?

Introducing 201 Aberdeen Parkway

By leveraging a former IHG Crown Plaza conference center location, you'll get the best of both worlds: fully customizable office square footage you need—no more, no less—with abundant amenities all in a beautiful, serene setting.

Aptly named, "Inspiration Hall," this space is ideal for professionals and creatives of all kinds, the space is modern yet welcoming, new yet established. **Private Practitioners** of all kinds, **Artists, Yoga/Dance Instructors, Therapists, Musicians, Churches, Hairstylists, Aestheticians, Co-working Companies, Photographers, Film Production Companies,** and many, many others will appreciate concierge-style offices in natural, retreat-like surroundings. Numerous available spaces include many large windows with attractive views and natural light.

Additional conveniences include an on-site, full-service hotel, restaurant, and bar. There's ample parking and access to the golf cart paths that wind through Peachtree City. Utilize your office space 24/7 to accommodate any schedule.

Whether you seek 1,000 or 10,000 square feet, or any other size, 201 Aberdeen Parkway will exceed your expectations and become your inspiration!

201 Aberdeen Parkway Details



- In the heart of desirable Peachtree City
- Amenities include full-service hotel, conference center, restaurant and bar on-site
- Golf cart accessible
- Attractive, well-maintained interior and exterior common areas
- Zoning: GC
- Wired for modern AV use
- Serene, wooded, picturesque setting
- First- or second-floor space available
- Ample parking
- Lease Rate: \$24 per SF/FS
- Potential 24/7 access
- Built in 1984
- City: Peachtree City
- County: Fayette

OFFICE SPACE FOR LEASE

201 Aberdeen Pkwy., Peachtree City, GA

For more information please contact:
Brent Randolph Cell: 770.318.6815

201 Aberdeen Parkway Multiple Spaces Available Existing Offices or Build-to-Suit Space

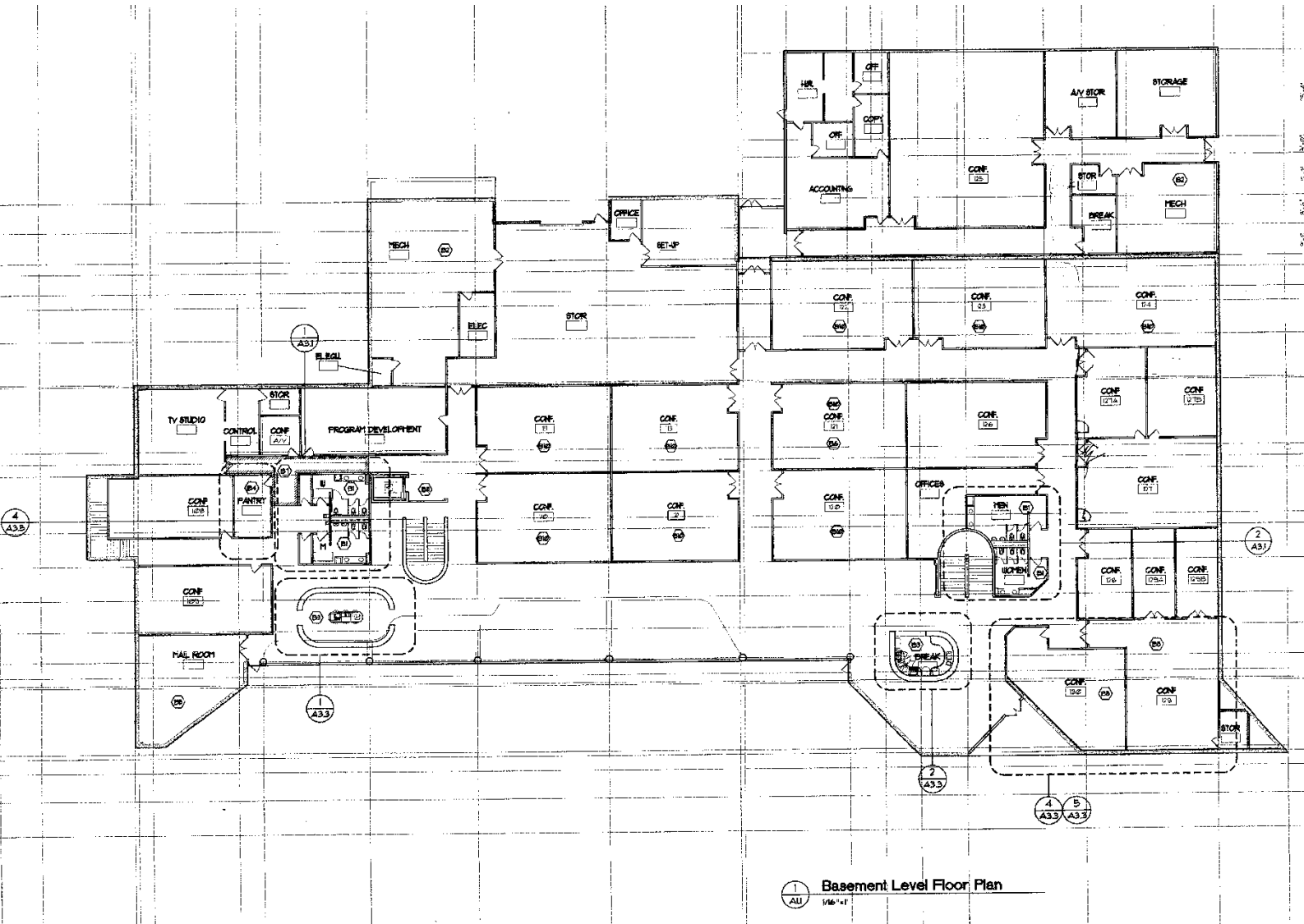


OFFICE SPACE FOR LEASE

201 Aberdeen Pkwy., Peachtree City, GA

For more information please contact:
Brent Randolph Cell: 770.318.6815

Basement Floor Plan

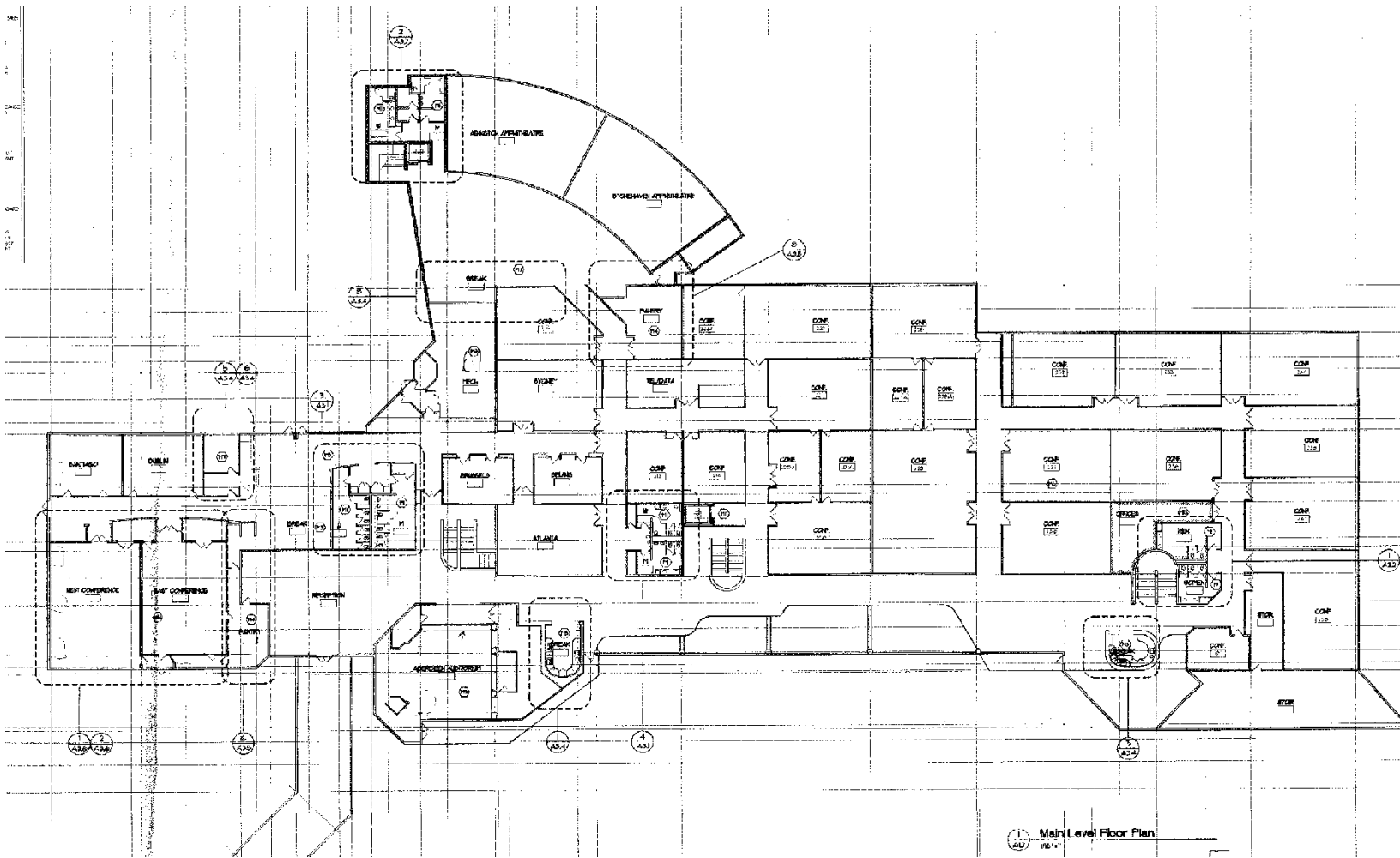


OFFICE SPACE FOR LEASE

201 Aberdeen Pkwy., Peachtree City, GA

For more information please contact:
Brent Randolph Cell: 770.318.6815

Main Level Floor Plan



COMMERCIAL REAL ESTATE | DEVELOPMENT | CONSTRUCTION | PROPERTY MANAGEMENT

770-632-4000

RWCRE.net



This information has been obtained from sources believed reliable. While we do not doubt its accuracy we have not verified it and make no guarantee, warranty or representation about it.

OFFICE SPACE FOR LEASE

201 Aberdeen Pkwy., Peachtree City, GA

For more information please contact:
Brent Randolph Cell: 770.318.6815

201 Aberdeen Parkway

Modern, Well-Maintained Common Areas, Inside and Out



COMMERCIAL REAL ESTATE | DEVELOPMENT | CONSTRUCTION | PROPERTY MANAGEMENT

770-632-4000

 RWCRE.net

 **ACBR**
ATLANTA COMMERCIAL
BOARD OF REALTORS



**Randolph
Williams**

This information has been obtained from sources believed reliable. While we do not doubt its accuracy we have not verified it and make no guarantee, warranty or representation about it.

OFFICE SPACE FOR LEASE

201 Aberdeen Pkwy., Peachtree City, GA

For more information please contact:
Brent Randolph Cell: 770.318.6815

201 Aberdeen Parkway

Serene, Natural Setting with Mature Shade Trees and Lake



COMMERCIAL REAL ESTATE | DEVELOPMENT | CONSTRUCTION | PROPERTY MANAGEMENT

770-632-4000

 RWCRE.net

 **ACBR**
ATLANTA COMMERCIAL
BOARD OF REALTORS



**Randolph
Williams**

This information has been obtained from sources believed reliable. While we do not doubt its accuracy we have not verified it and make no guarantee, warranty or representation about it.

OFFICE SPACE FOR LEASE

201 Aberdeen Pkwy., Peachtree City, GA

For more information please contact:
Brent Randolph Cell: 770.318.6815

201 Aberdeen Parkway Location

