



Property features

- 192,767± sf office park in South Orlando consisting of four single-story, free-standing buildings
- Upgraded directional signage and landscaping
- Roving security guard Monday through Friday from 5:00 pm until 9:00 pm
- Management office within close proximity
- Close by an abundance of shopping and eateries around Millenia Mall and Sand Lake Road\



Efficient floor plans



Abundant parking
(5.60/1,000 sf ratio)



Building signage available

For further information

avisonyoung.com

Lisa Bailey, SIOR

Principal

O +1 407 440 6645

lisa.bailey@avisonyoung.com

Property availability

6101-6251 Chancellor Drive
Orlando, FL 32809



Available spaces

Building	Suite	Square Footage	Condition
6101	1130	5,729± sf	Shell space
6149	2800	15,611± sf	Office
6203	3700	4,392± sf	Shell space

For further information

avisonyoung.com

Lisa Bailey, SIOR
Principal
O +1 407 440 6645
lisa.bailey@avisonyoung.com

Property photos

6101-6251 Chancellor Drive
Orlando, FL 32809



For further information

avisonyoung.com

Lisa Bailey, SIOR

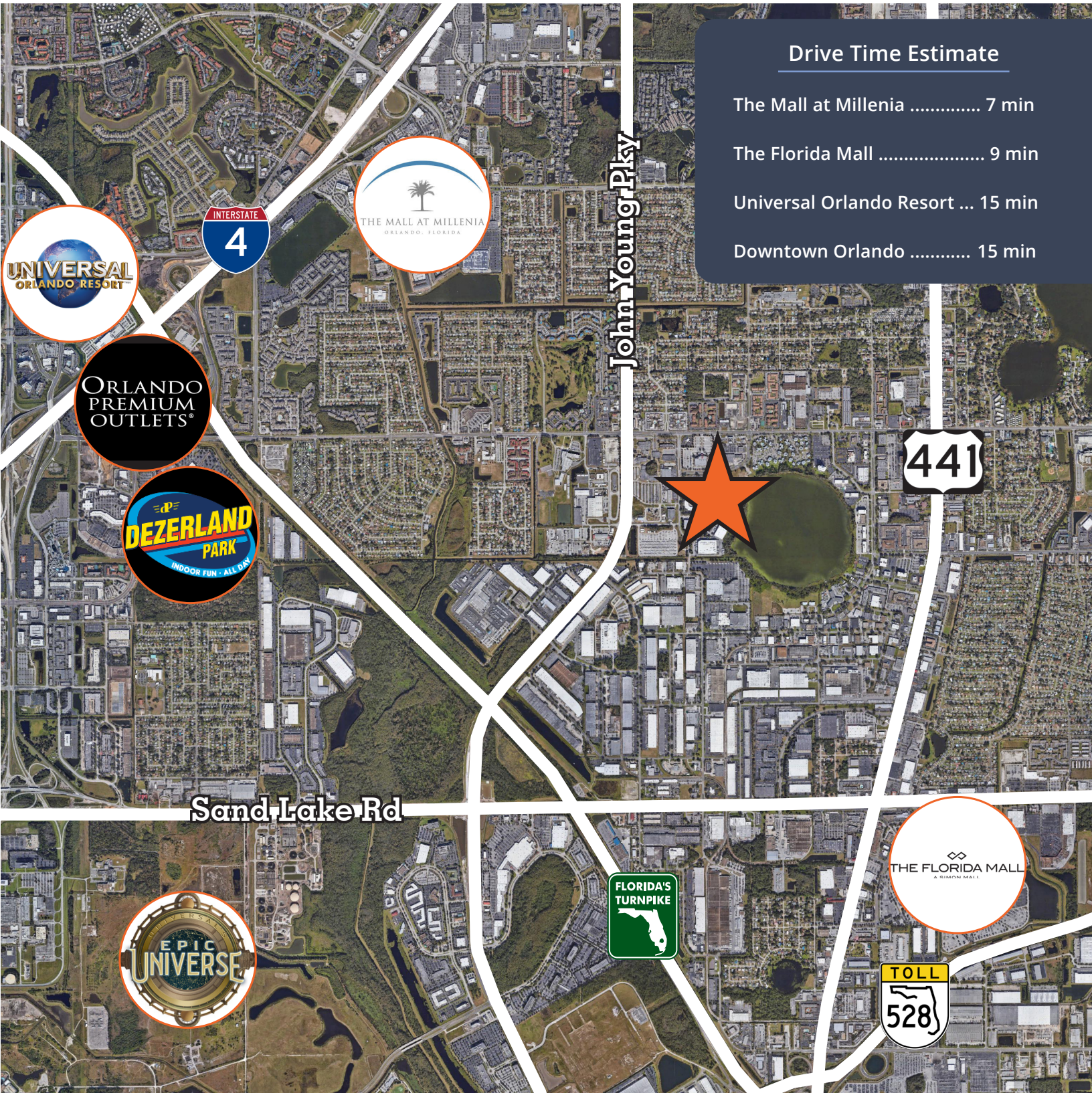
Principal

O +1 407 440 6645

lisa.bailey@avisonyoung.com

Property Map

6101-6251 Chancellor Drive
Orlando, FL 32809



For further information

avisonyoung.com

Lisa Bailey, SIOR

Principal

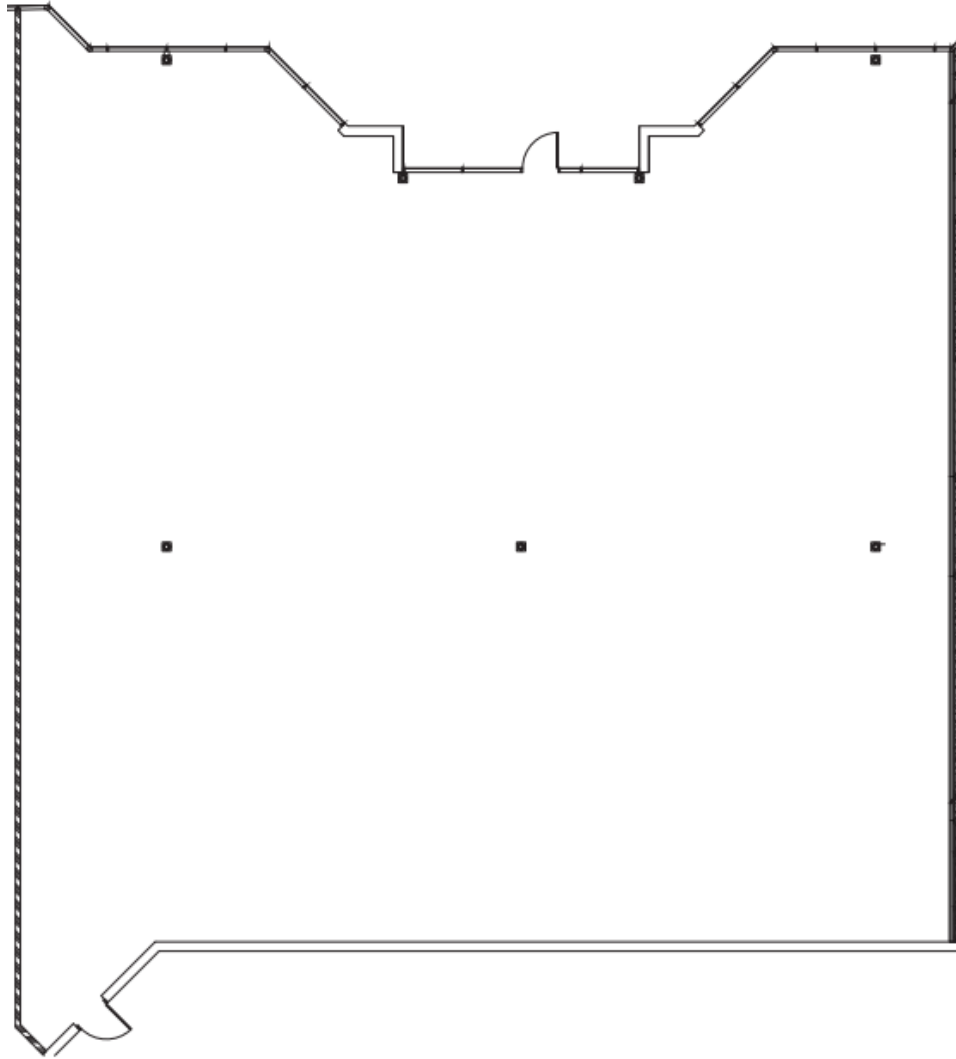
O +1 407 440 6645

lisa.bailey@avisonyoung.com

Building 6101

Suite 1130 - 5,729± SF

*Shell Space



**For further
information**

avisonyoung.com

Lisa Bailey SIOR

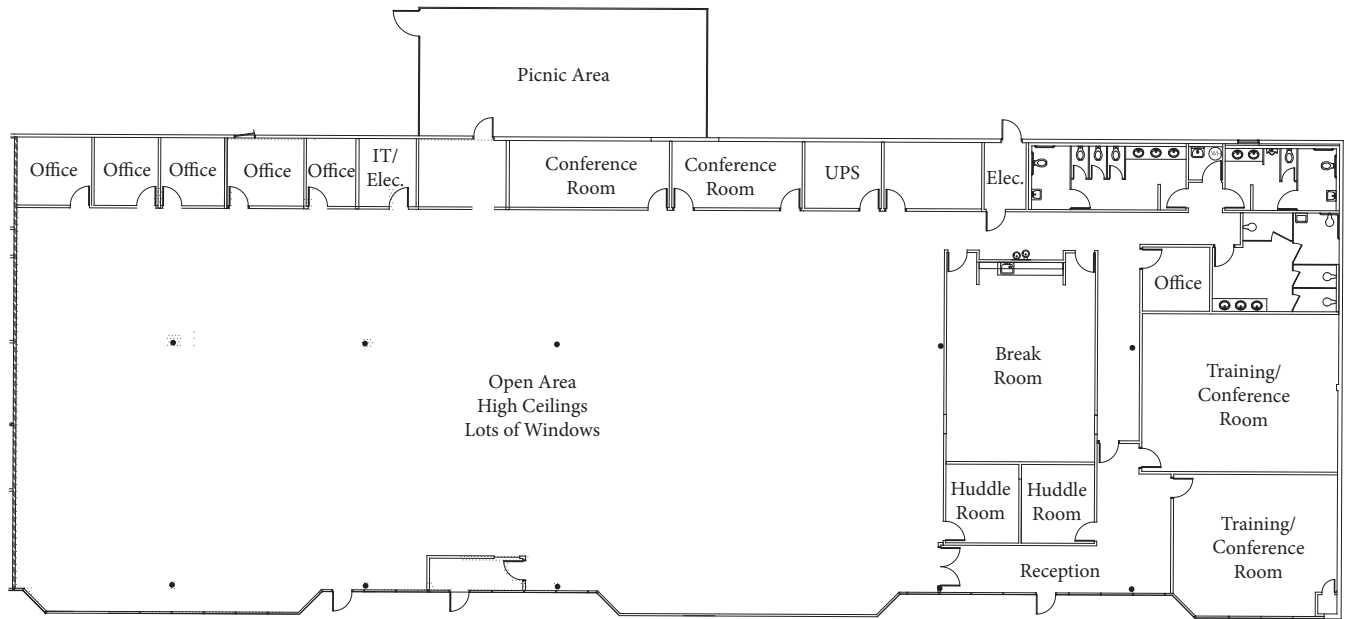
Principal

O +1 407 440 6645

lisa.bailey@avisonyoung.com

Building 6149

Suite 2800 - 15,611± SF



**For further
information**

avisonyoung.com

Lisa Bailey SIOR

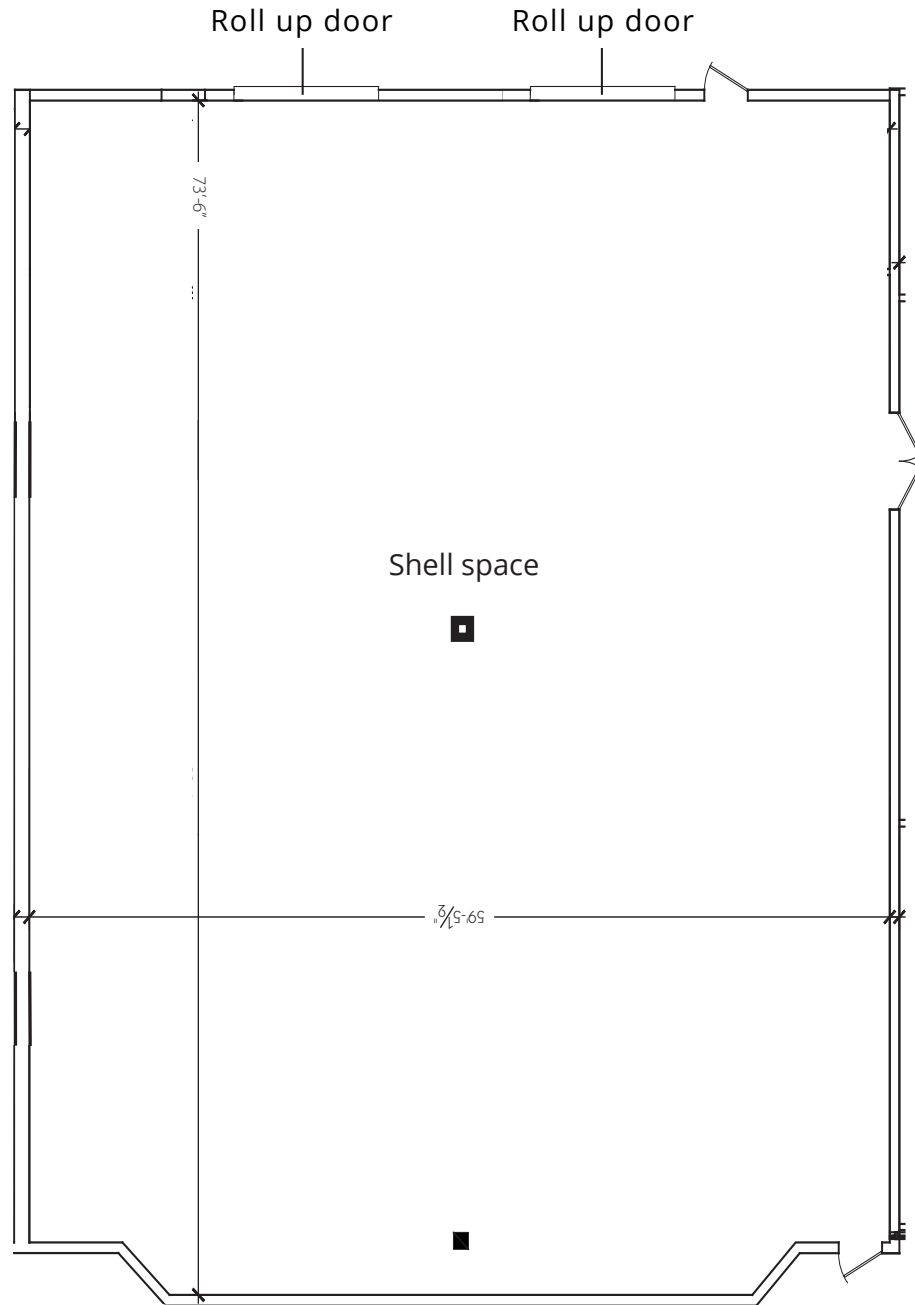
Principal

O +1 407 440 6645

lisa.bailey@avisonyoung.com

Building 6203

Suites 3700 - 4,392± SF



**For further
information**

avisonyoung.com

Lisa Bailey SIOR

Principal

O +1 407 440 6645

lisa.bailey@avisonyoung.com