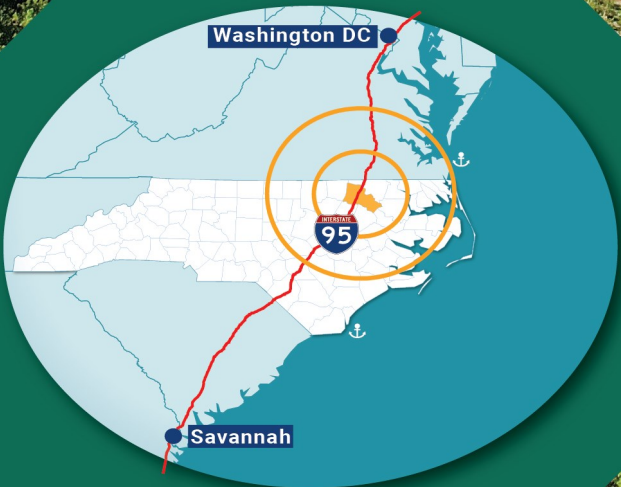


# US 301 INDUSTRIAL SITE

MANUFACTURING | DISTRIBUTION | WAREHOUSING

A NORTH CAROLINA SELECTSITE  ECONOMIC DEVELOPMENT PARTNERSHIP OF NORTH CAROLINA



## HALIFAX COUNTY NORTH CAROLINA

 [CLICK HERE FOR VIDEO](#)

 [CLICK HERE FOR LISTING](#)

# SITE HIGHLIGHTS

Halifax County, North Carolina

**Address:** 290 Trestle Road, Enfield

**Owner:** Halifax County

**Price:** Negotiable

**Acres:** 251 acres

**Buildable:** 132.66 acres

**Zoning:** Heavy Industrial

## Surrounding Land Use:

Manufacturing, Agricultural, and Renewable Energy

## Industrial Studies Completed:

- Phase I Environmental Assessment
- Full Engineering Report
- Sample Soil Borings & Geotechnical Analyses
- Topographic Survey
- Boundary Survey
- Telecommunications Study

**Port Access:** Ports of Virginia; Ports of Wilmington and Morehead City in NC

**Airport Access:** RDU International (RDU), Norfolk International (ORF), and Richmond International (RIC) Airports within 90 minutes

**CSX Rail:** CSX Transportation Class I Rail Line located adjacent to site

**Halifax-Northampton Regional Airport (IXA):** Located eight miles from the site and features a 5,500 foot runway and modern general aviation amenities

# US 301 INDUSTRIAL SITE

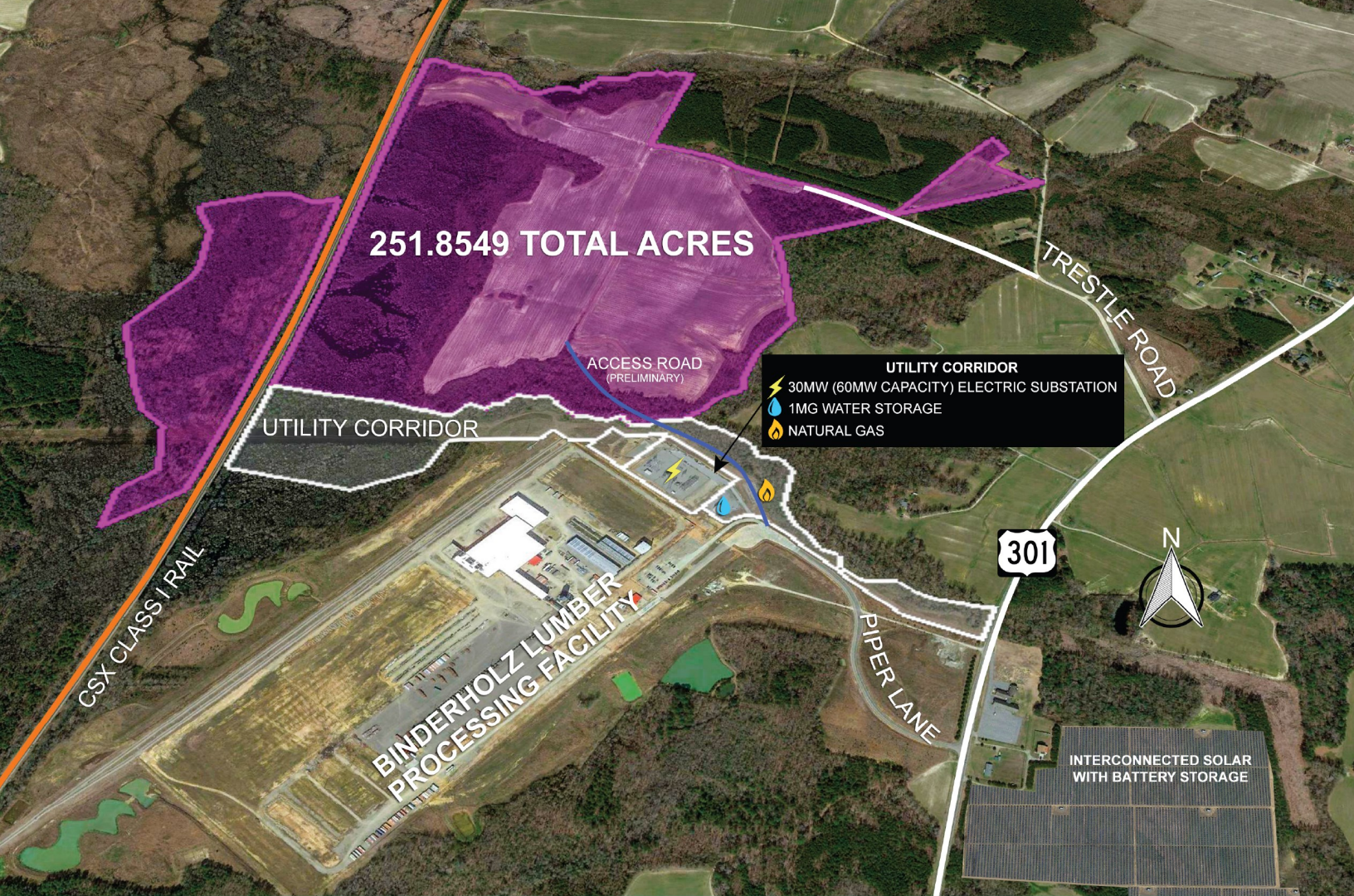
The US 301 Industrial Site is a 251-acre prime industrial site located two miles north of Enfield, NC on US Highway 301, 10 minutes from Interstate 95. The site's strategic location along with excellent infrastructure, rail access, and proximity to deep-water ports guarantees your company a location advantage. The site is adjacent to a 350 MBF softwood lumber manufacturing facility.

## LOCATION & LOGISTICAL ADVANTAGES

Halifax County, North Carolina is centrally located between the major metropolitan areas of Raleigh, NC and Richmond and Norfolk, VA. Halifax County's central East Coast location and excellent transportation network provide unparalleled proximity to major markets. Logistical advantages include:

- Equidistant between New York and Florida
- US Highway 301 connects to Interstate 95, US Highways 64 and 158, NC Highways 481, 561, and 125 along with connections to Interstates 40 and 85
- One day drive to major East Coast markets
- Three international airports within 90 minutes: (Raleigh-Durham International (RDU); Richmond International (RIC), and Norfolk International Airports (ORF)
- CSX Transportation Class I Rail Line adjacent to site
- Accessible to the Ports of Virginia and Ports of Morehead City and Wilmington, NC
- Approximately 1 million people live within 60 miles of the Enfield Industrial Site
- Civilian labor force with over 450,000 workers within 60 miles
- CSX Carolina Connector (CCX) Intermodal Rail Terminal (12 miles from the Enfield Industrial Site)





## INDUSTRIAL QUALITY INFRASTRUCTURE

### Access Road

Extension of Trestle Road to the site.

### Natural Gas

Piedmont Natural Gas serves the site.

### Electricity

Power supply and interconnect via a new sub-station adjacent to the site and owned by Halifax Electric that can supply 30 MW electrical power with options to expand. Interconnected to HEMC's distribution grid is a 20 MW solar energy and battery storage facility capable of up to 10 MWh of additional storage.

### Water

12" water line is available at Highway 301. Public water services is provided by Halifax County. A 1 MG water storage tank is located within the utility corridor to provide water storage and fire protection for this site.

### Sewer

An 4-inch sewer force main can be extended to the site.

### Rail

A CSX Class I rail line is located adjacent to the site. A preliminary rail spur design has been created for the site. The site is 12 miles from the Carolina Connector (CCX) Intermodal Rail Terminal.

### Trucking

A network of regional and national carriers offer flexible and timely service to ensure an efficient and reliable freight transportation system is available to meet trucking needs.

### Employment

Available workers and access to North Carolina's award winning training resources will ensure a pipeline of workers for manufacturing, warehousing, and distribution operations.

## GET IN TOUCH



(252) 519-2630



cathyscott@halifaxdevelopment.com  
www.halifaxdevelopement.com



260 Premier Boulevard  
Roanoke Rapids, NC 27870

# RESOURCES TO GROW YOUR BUSINESS IN HALIFAX COUNTY

The Halifax County Economic Development Commission can deliver the ideal location for your business at the US 301 Industrial Site and provide resources to help your company reach new levels of prosperity. We will provide confidential assistance to support business location and expansion needs. We can help new and expanding businesses leverage their investments with additional state and local funding. Working with our partners, we can help your company take advantage of resources such as the HubZone Contracting Program, New Markets Tax Credits, infrastructure development, local and state incentive programs, low interest loans, and more.