

For Sale

CBRE Upstate NY

PART OF THE AFFILIATE NETWORK

Oneida Community Golf Club

Value Add Investment Offering

1017 Golf Course Lane
Oneida, NY 13421

Operating Golf Club On 230 Acres In Central New York



Offering Overview

CBRE Upstate NY has been retained as the exclusive broker for Oneida Community Golf Club (OCGC), one of America's oldest courses. Opened in 1900, this historic course was previously owned and operated by Oneida Ltd, (one of the world's largest manufacturers of cutlery and tableware) and was used only for company employees and guests. In more recent years, the club has been operated on a semi-private basis.

Nestled in the communities of Sherrill-Kenwood, New York, Oneida Community Golf Club offers a mature course possessing all the natural beauty that comes with age and meticulous care over the last 125 years, as well as a modern clubhouse with a full service restaurant and bar (built in 2004). The 230 acre property features rolling hills, a meandering creek, elevated tees, lush woodlands harboring stately trees, and the 32-acre Sunset Lake.

Available For Sale

List Price	\$1,600,000
-------------------	-------------

1900

OCGC Opened

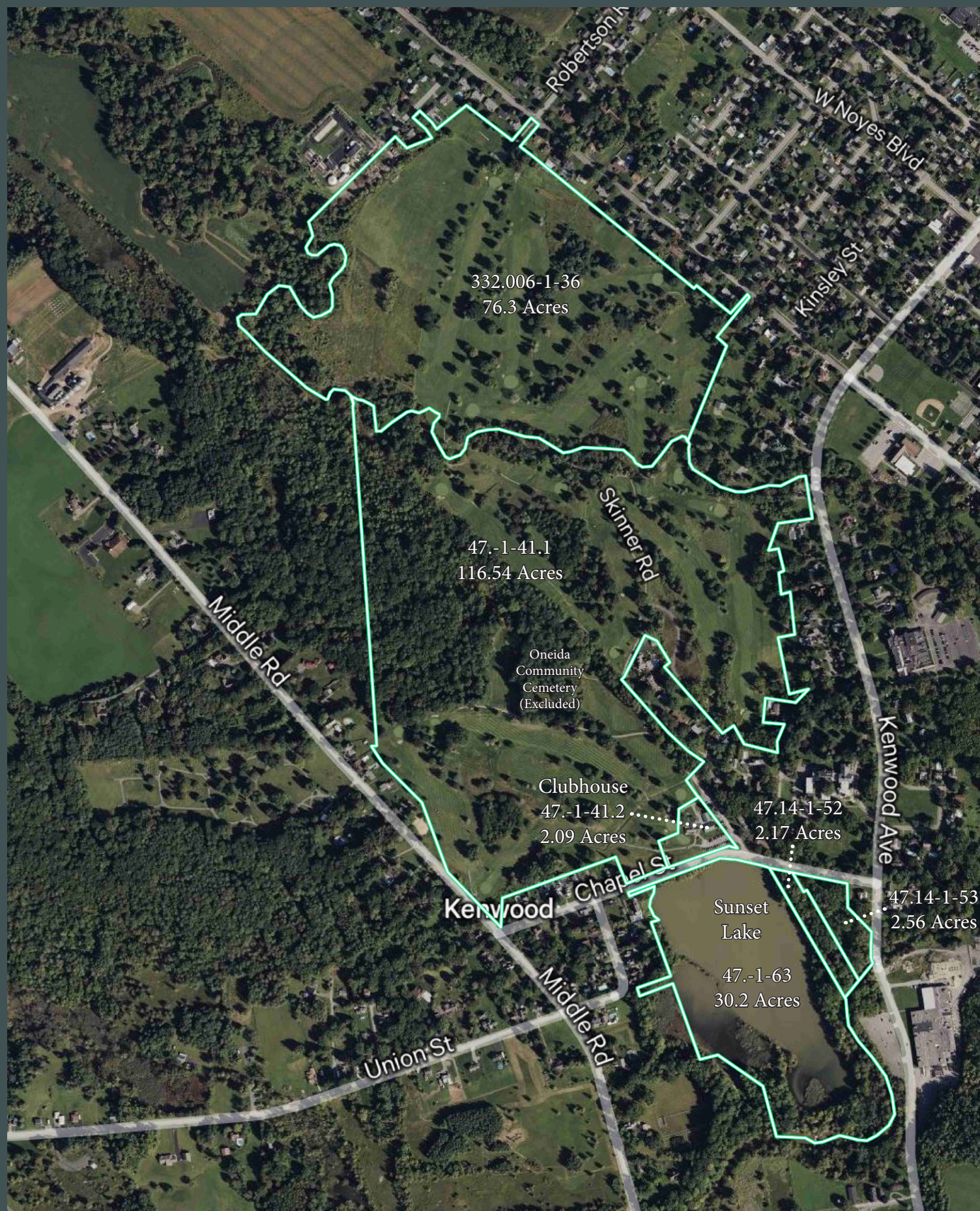
230

Acres

3,048

Square Foot Clubhouse





Offering Details

Parcel Summary					
Tax Parcel ID	Street Address	Municipality	County	Acres	Zoning
332.006-1-36	W Hamilton Ave	City of Sherrill	Oneida	76.30	R-1 Residential
47-1-41.1	1017 Golf Course Rd	City of Oneida	Madison	116.54	A-Agricultural
47-1-41.2	1017 Golf Course Rd	City of Oneida	Madison	2.09	C-Commercial
47-1-63	Middle Rd	City of Oneida	Madison	30.2	R1-Residential
4714-1-52	Kenwood Ave	City of Oneida	Madison	2.17	R1-Residential
4714-1-53	Kenwood Ave	City of Oneida	Madison	2.56	R1-Residential
				Total: 229.86	

Additional Property Details	
Course Description	6,418 Yards, Par 71 Rating 71.1, Slope 129
Clubhouse Size	3,048 Square Feet
Interior Improvements	Bar, Restaurant (Lakeside Landing), Commercial Kitchen, Pro Shop
Encumbrances/Easements	Oneida Community Cemetery is located on the Property and will be excluded from the sale along with an access easement
Utilities	Electricity: Sherrill Power & Light (Municipal co-gen power company) Sewer: Public Sewer Water: Public Water Natural Gas: Available From National Grid (Clubhouse currently uses propane proved by Scharman Propane)





Contact Us

Andrew Gearhart

+1 585 784 3626

andrew.gearhart@cbre-rochester.com

Licensed Real Estate Salesperson

Alex Amorese

+1 585 784 3621

alex.amorese@cbre-rochester.com

Licensed Real Estate Salesperson

Angelo Nole

+1 585 784 3637

angelo.nole@cbre-rochester.com

Licensed Associate Real Estate Broker

© 2025 CBRE Upstate NY, part of the CBRE Affiliate Network. All rights reserved. This information has been obtained from sources believed reliable, but has not been verified for accuracy or completeness. You should conduct a careful, independent investigation of the property and verify all information. Any reliance on this information is solely at your own risk. CBRE Upstate NY and the CBRE Upstate NY logo are service marks of CBRE Upstate NY. All other marks displayed on this document are the property of their respective owners, and the use of such logos does not imply any affiliation with or endorsement of CBRE Upstate NY. Photos herein are the property of their respective owners. Use of these images without the express written consent of the owner is prohibited.

www.cbre.com/rochester

CBRE Upstate NY
PART OF THE AFFILIATE NETWORK