

INDUSTRIAL SPACE FOR LEASE

# 205 INDUSTRIAL AVE EAST

Lowell, Massachusetts

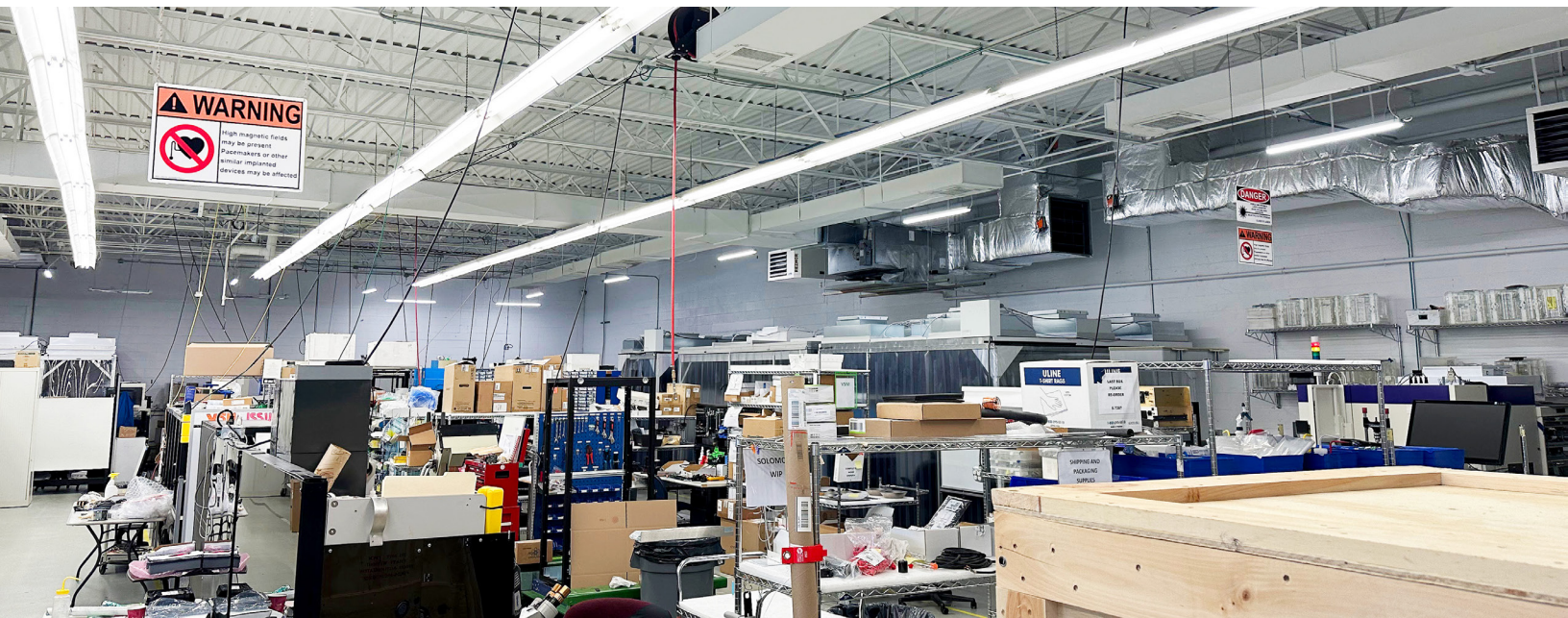


INDUSTRIAL/MANUFACTURING **OPPORTUNITY**

## 14,200 SF Available



303 Congress Street, Boston, MA 02210 617.457.3400 [www.hunnemanre.com](http://www.hunnemanre.com)

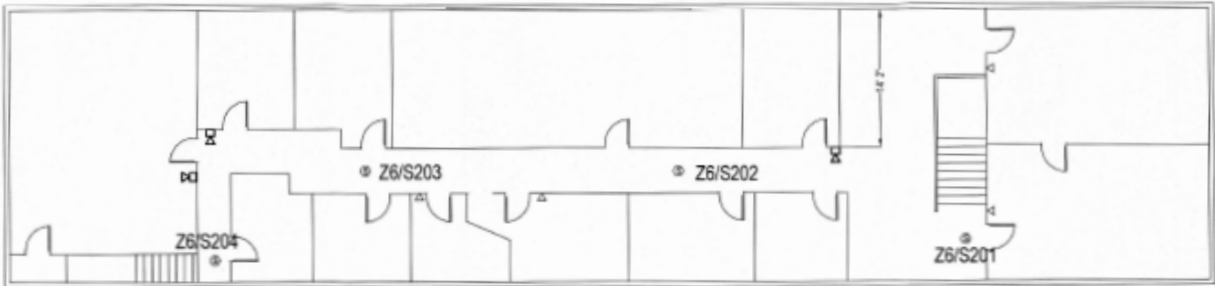


PROPERTY SPECIFICATIONS

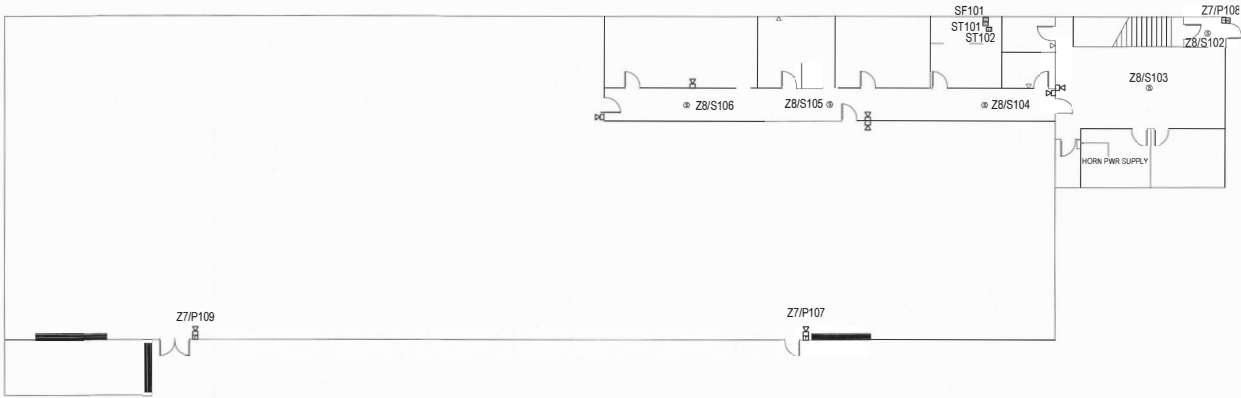
BUILDING SIZE:	44,000 SF
AVAILABLE SPACE:	14,200 SF 8,500 SF - Warehouse 5,700 SF - Office
PROPERTY TYPE:	Industrial/Warehouse
PARKING:	30 Parking Spaces
LOADING:	One (1) Loading Dock One (1) Drive-in
CEILING HEIGHT:	20'
ASKING RENT:	\$12.50/SF NNN
NOTES:	0.5 miles from Route 3 / I-495, dedicated exit off the Lowell Connector, amenity rich location

FLOOR PLAN | 14,200 SF

SECOND FLOOR



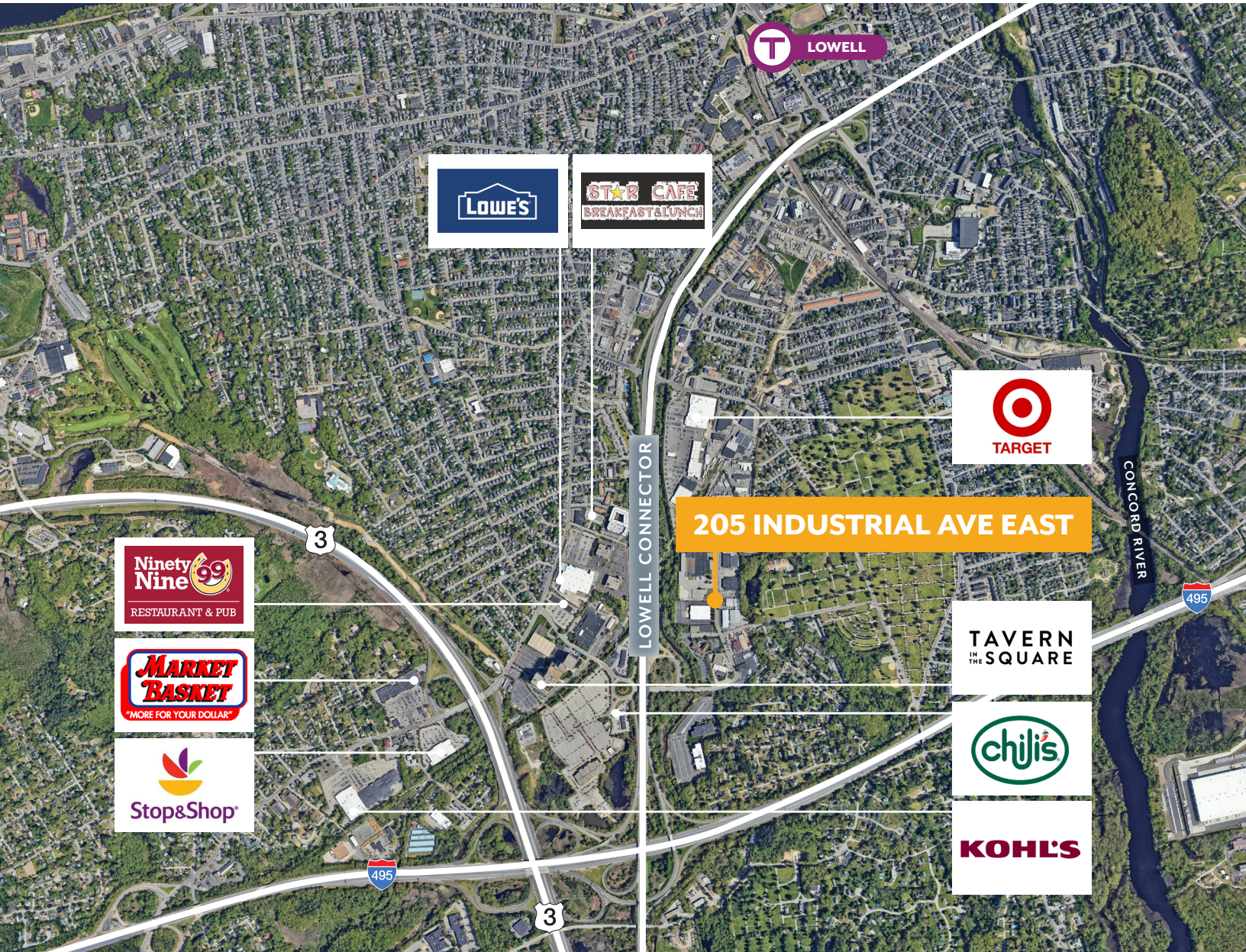
FIRST FLOOR



14,200 SF AVAILABLE

# 205 INDUSTRIAL AVE EAST

Lowell, Massachusetts



CONTACT US TO ARRANGE A TOUR

**TYLER EWING**

*Executive Vice President*

617.448.1894

[tewing@hunnemanre.com](mailto:tewing@hunnemanre.com)



303 Congress Street, Boston, MA 02210 617.457.3400 [www.hunnemanre.com](http://www.hunnemanre.com)

©2025 Hunneman. All rights reserved. All information has been obtained from sources believed reliable but no warranty or representation is verified for accuracy or completeness. Caution and independent investigation of property and information should be verified. Reliance on this information is at your own risk.