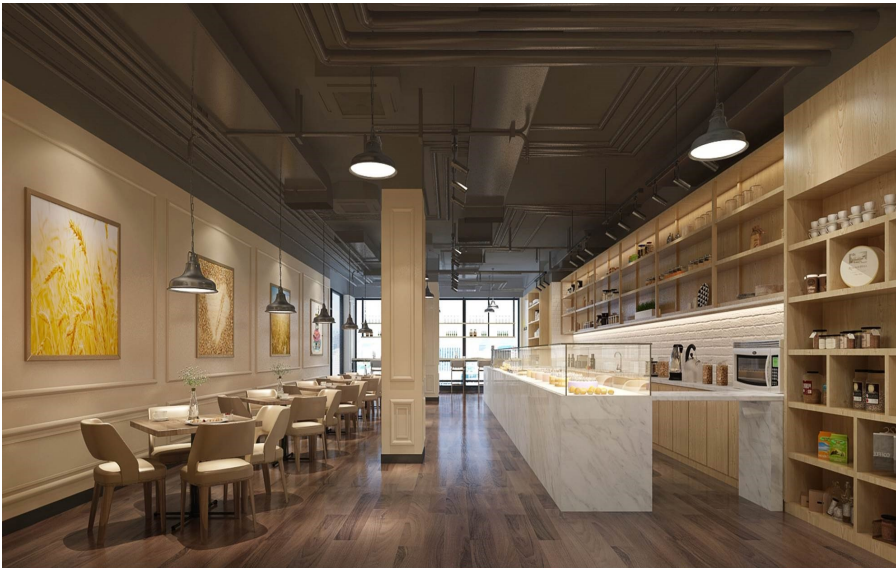


Bakery Shop Available in Old Pasadena for Lease

39 North Raymond Avenue, Pasadena, CA 91105

Sauvé & Associates
Commercial Real Estate



39 North Raymond Avenue, Pasadena

Size: Approximately 2,438 Rentable Square Feet

Balance of Term: Until February 28, 2020

Option to Extend: Five (5) Years

Base Rent: \$3.50/RSF NNN's approx. \$0.75/rsf

Premises: State of the art new appliances, baking/kitchen area, counter prep area for personalized coffee, assorted drinks, including teas, bakery product display and seating for patrons.

Signage: Great approved building signage

Approvals: Parking Credits, ADA/ Health Department

Within walking distance of all the amenities of Old Pasadena. Street parking, nearby parking structure, easy access to the

626.585.4321

Norm Sauvé nsauve@saurverec.com DRE # 009372714

Sauvé & Associates, Inc. DRE# 02117417

[Www.sauve-associates.com](http://www.sauve-associates.com)

12 South Raymond Avenue, Suite A, Pasadena, CA 91105

39 North Raymond Avenue, Pasadena, CA 91105

