

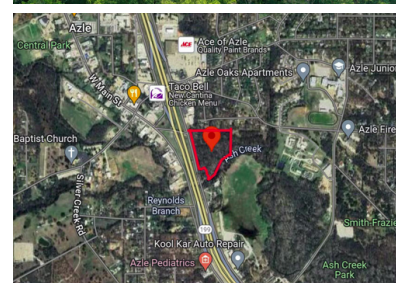
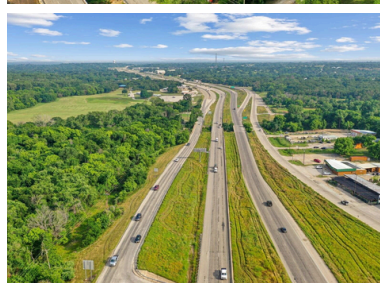
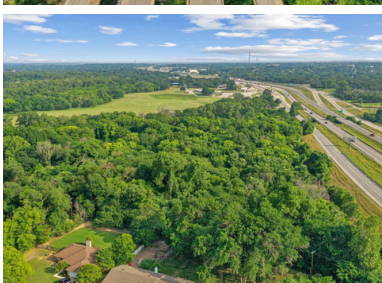
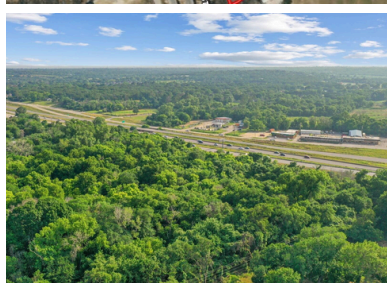
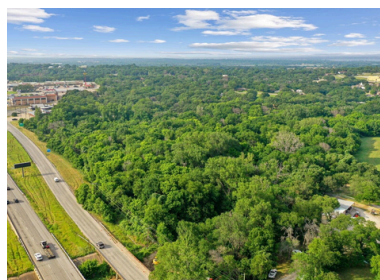
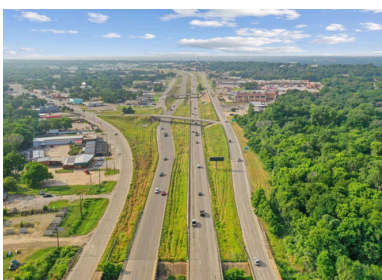
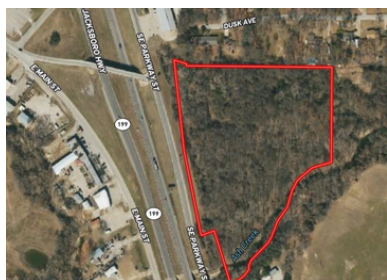


PROPERTY FOR SALE

\$1,295,000

12.08 ACRES

LOCATED RIGHT OFF HWY 191 ON AN EXIT LANE. THIS 12.08 ACRE PARCEL IS PRIME REAL ESTATE FOR COMMERCIAL OPPORTUNITY. ZONED HEAVY COMMERCIAL WITH PLENTY OF USABLE LAND AND OPTIONS. CALL FOR DETAILS



331 SE PARKWAY ST AZLE, TX