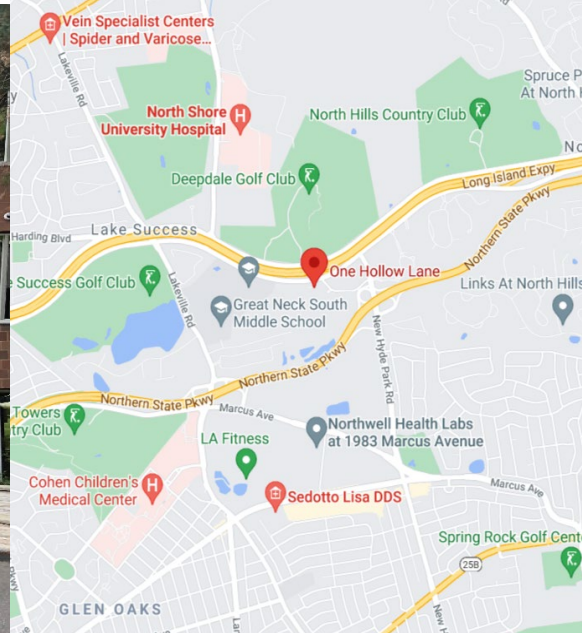




CLASS "A" OFFICE/MEDICAL SPACE LEASING OPPORTUNITY

# One Hollow Ln, Lake Success, NY





 Office/Medical Space


 Proximity to LIE, Northern State Parkway, North Shore University Hospital, and Cohen Children's Medical Center

 Available: 9,000 SF 2<sup>nd</sup> FI (Q1 2023)  
2,945 SF 3<sup>rd</sup> FI (7/31/22)

 Excellent Parking

 Newly Renovated Lobby, Restrooms, and Elevators

 Exterior Remodel

 Buildout Available

## Prime Medical/Office Leasing Opportunity

One Hollow Lane is a Class "A," fully renovated office building in Lake Success with approximately 125,000 square feet of prime space. The building is strategically situated in the village of North Hills, Long Island, New York, at the Long Island Expressway and New Hyde Park Road intersection and close to Northern State Parkway. The space lends itself well to a medical user with more than half of the building being occupied by tenants in that field.

Lake Success Business Park is conveniently located within a 2-minute drive to Northwell Hospital Campus and a 7-minute drive to Cohen Children's Medical Center, providing an avenue to some of the area's most prominent names in healthcare. The property is strategically located only 20 miles to Manhattan and John F. Kennedy International Airport can be reached in under 30 minutes.

### Steel Equities

999 South Oyster Bay Road, Suite 200  
Bethpage, New York 11714

### Jason Miller

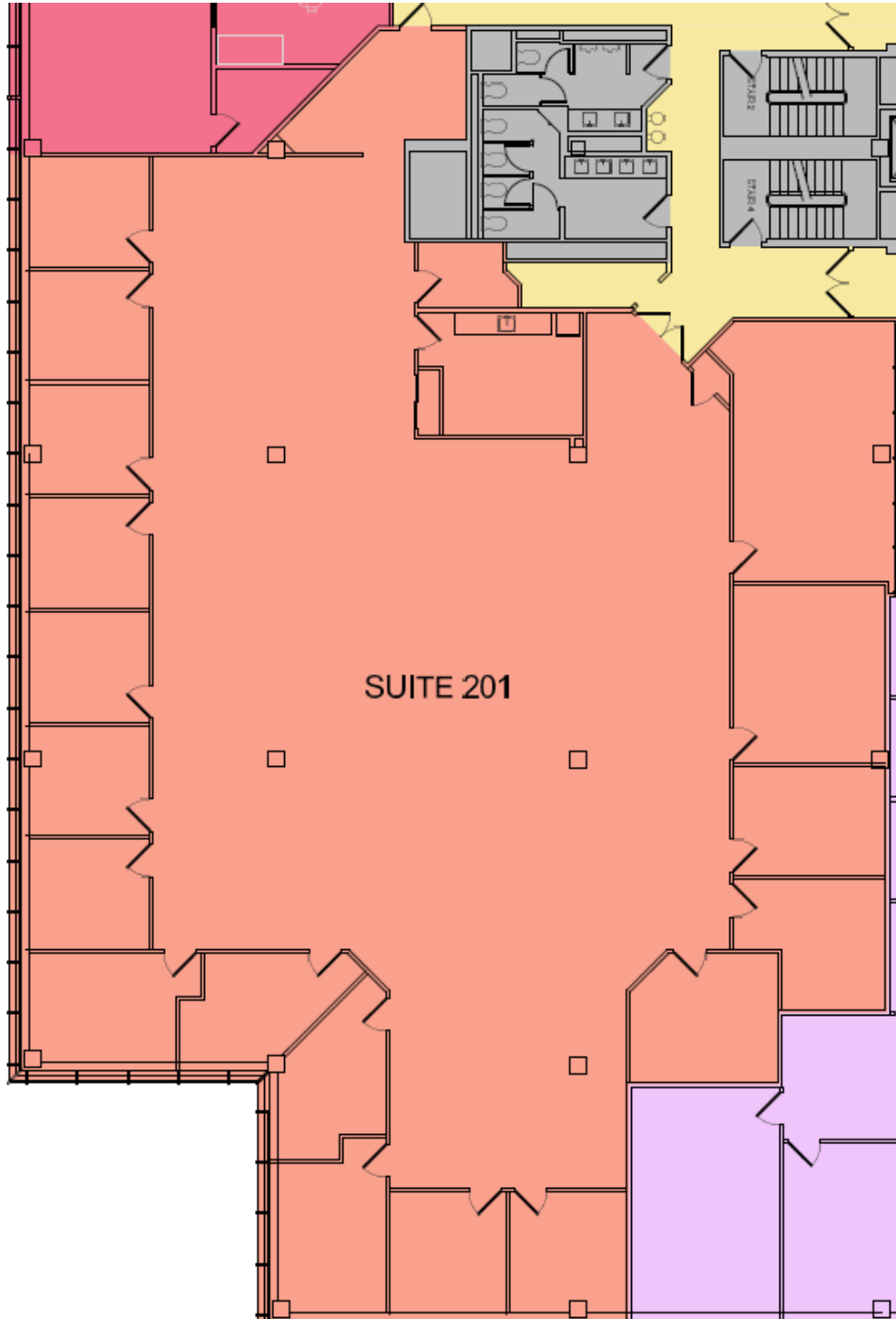
E: [jmiller@steelequities.com](mailto:jmiller@steelequities.com)  
O: 516-465-0000

### Vladi Andrei

E: [vandrei@SteelEquities.com](mailto:vandrei@SteelEquities.com)  
O: 516-465-0000

CLASS "A" OFFICE/MEDICAL SPACE LEASING OPPORTUNITY

# One Hollow Ln, Lake Success, NY



**Steel Equities**

999 South Oyster Bay Road, Suite 200  
Bethpage, New York 11714

**Jason Miller**

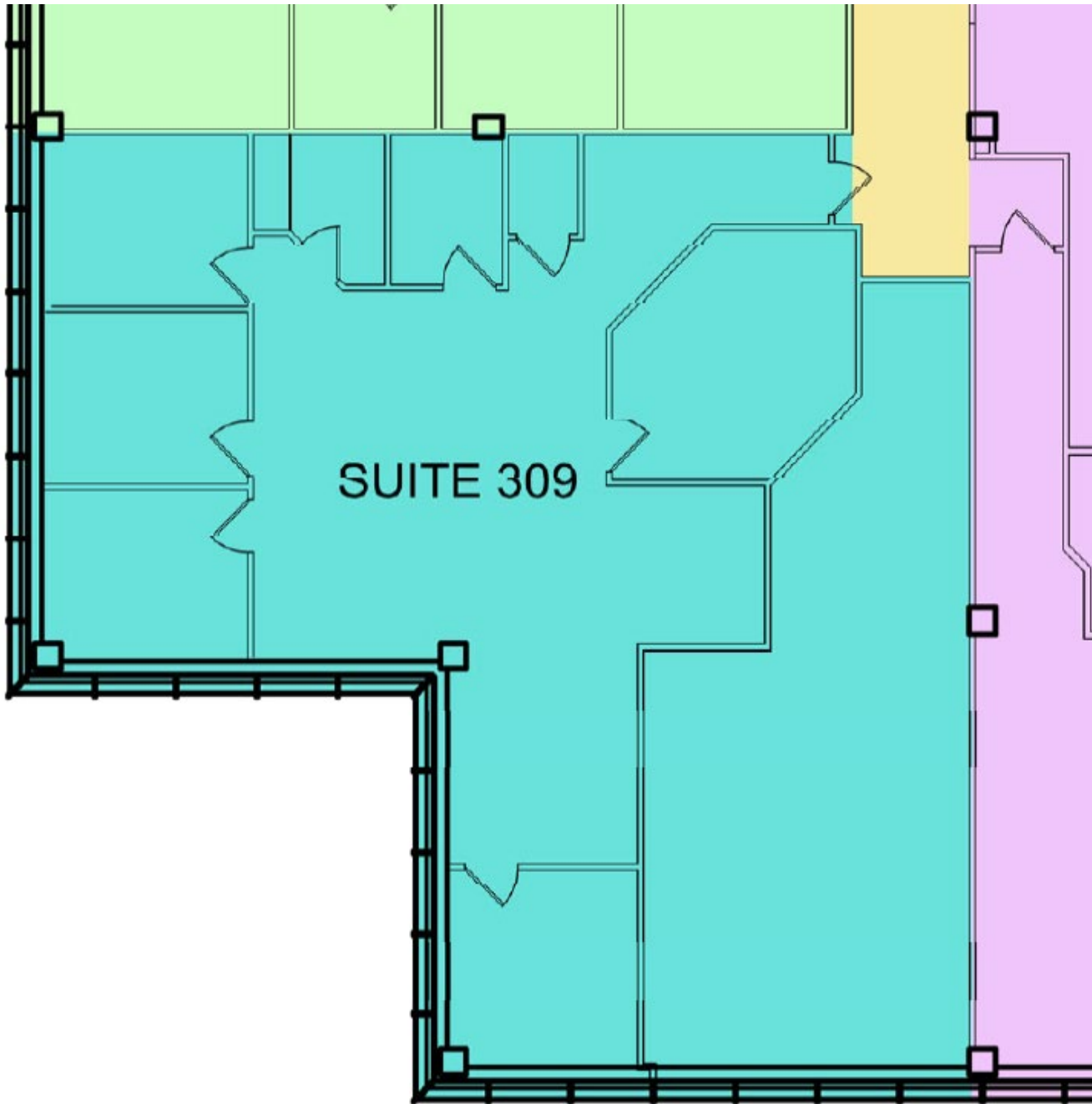
E: [jmiller@steelequities.com](mailto:jmiller@steelequities.com)  
O: 516-465-0000

**Vladi Andrei**

E: [vandrei@SteelEquities.com](mailto:vandrei@SteelEquities.com)  
O: 516-465-0000

CLASS "A" OFFICE/MEDICAL SPACE LEASING OPPORTUNITY

# One Hollow Ln, Lake Success, NY



**Steel Equities**

999 South Oyster Bay Road, Suite 200  
Bethpage, New York 11714

**Jason Miller**

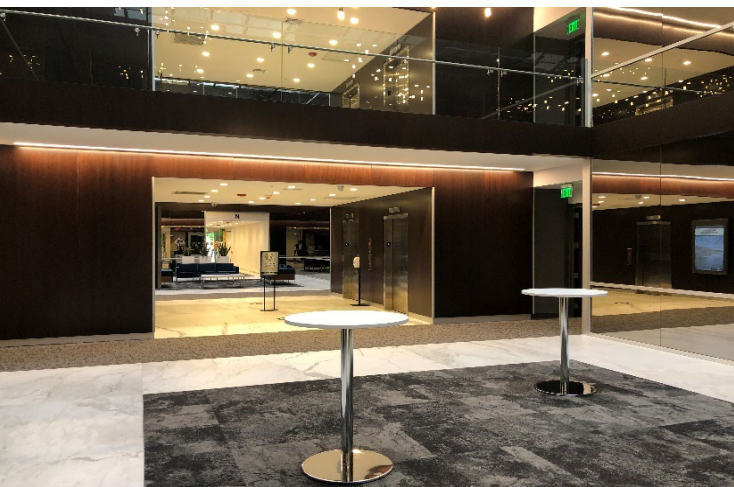
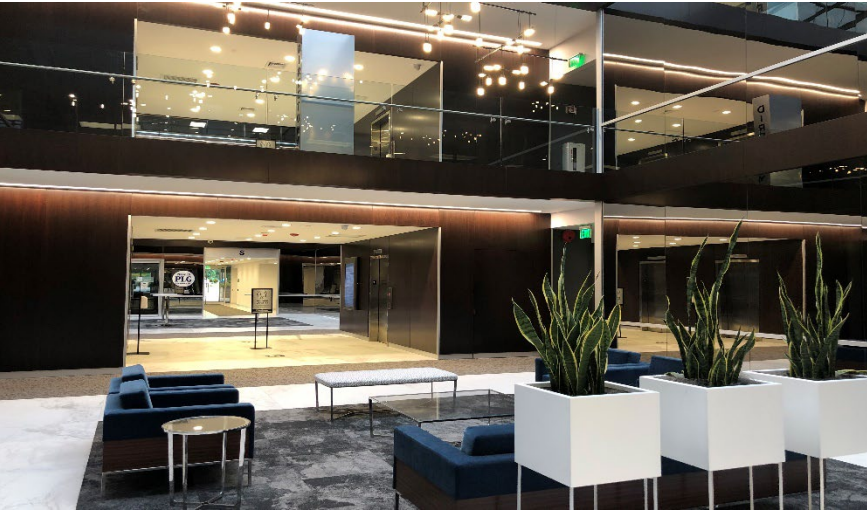
E: [jmiller@steelequities.com](mailto:jmiller@steelequities.com)  
O: 516-465-0000

**Vladi Andrei**

E: [vandrei@SteelEquities.com](mailto:vandrei@SteelEquities.com)  
O: 516-465-0000

CLASS "A" OFFICE/MEDICAL SPACE LEASING OPPORTUNITY

# One Hollow Ln, Lake Success, NY



**Steel Equities**

999 South Oyster Bay Road, Suite 200  
Bethpage, New York 11714

**Jason Miller**

E: [jmiller@steelequities.com](mailto:jmiller@steelequities.com)  
O: 516-465-0000

**Vladi Andrei**

E: [vandrei@SteelEquities.com](mailto:vandrei@SteelEquities.com)  
O: 516-465-0000