



PROGRESS PLAZA

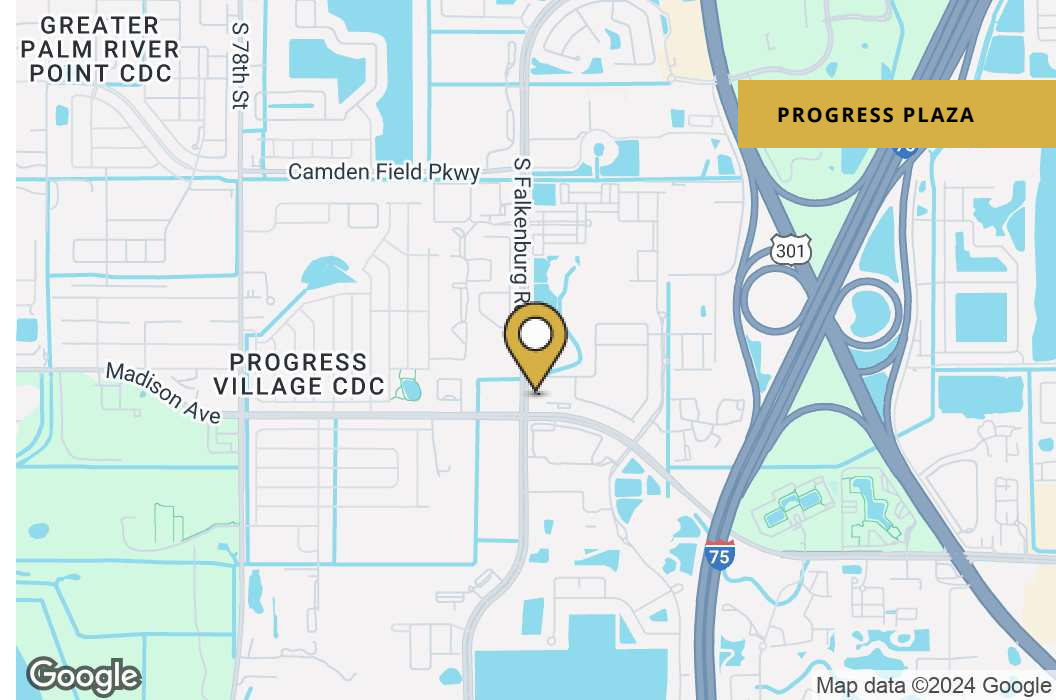
9076 Progress Boulevard, Riverview, FL 33578

MOHAMMAD MUSTAFA
813.385.6021
mustafa@nationrs.com

MOHANAD RIFAIE
813.777.1854
mrifaie@nationrs.com



Property Summary



OFFERING SUMMARY

| | |
|------------------|---------------------|
| Lease Rate: | \$35.00 SF/yr (NNN) |
| Number of Units: | 24 |
| Available SF: | 1,000 - 3,000 SF |
| Lot Size: | 5.68 Acres |
| Building Size: | 6,550 SF |

| SPACES | LEASE RATE | SPACE SIZE |
|-------------------------|---------------|------------------|
| 9076 Progress Plaza | \$35.00 SF/yr | 1,000 SF |
| 9080 Progress Boulevard | \$35.00 SF/yr | 1,000 - 3,000 SF |

PROPERTY HIGHLIGHTS

- Prime location in the heart of Progress Village
- High-visibility with easy access to major business districts
- Conveniently located near I-75 and the Selmon Expressway
- Surrounded by the thriving communities of Riverview, Bloomingdale, and Brandon
- Attracts traffic from nearby residential neighborhoods and major employers
- Close to diverse shopping, dining, and recreational amenities
- Ideal for businesses looking to thrive in a dynamic, growing community
- New construction commercial space available for lease
- Ample parking for both customers and employees

MOHAMMAD MUSTAFA
813.385.6021
mustafa@nationrs.com

MOHANAD RIFAIE
813.777.1854
mrifaie@nationrs.com



Location Map

Ricopan Bakehouse



Causeway Park



Lake Brandon Shoppes



TGH Cancer Center



Frost Elementary School

Pavilion Crossing



Eggs Up Grill



Giunta Middle School



Fountains at Falkenburg Apartments



Progress Village Park



Peppajak



Progress Blvd @ Falkenburg Rd



Larry Sanders Sports Complex



Bloomington Towne Centre

Progress Village Pickleball Courts



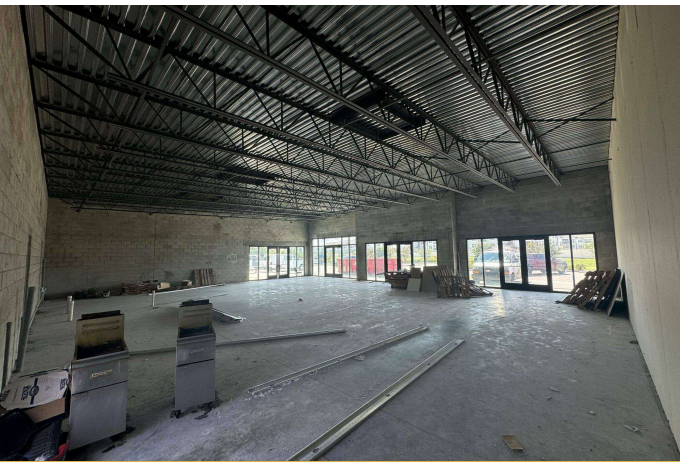
Riverview

Spoto High School

MOHAMMAD MUSTAFA
813.385.6021
mustafa@nationrs.com

MOHANAD RIFAIE
813.777.1854
mrifaie@nationrs.com

Additional Photos

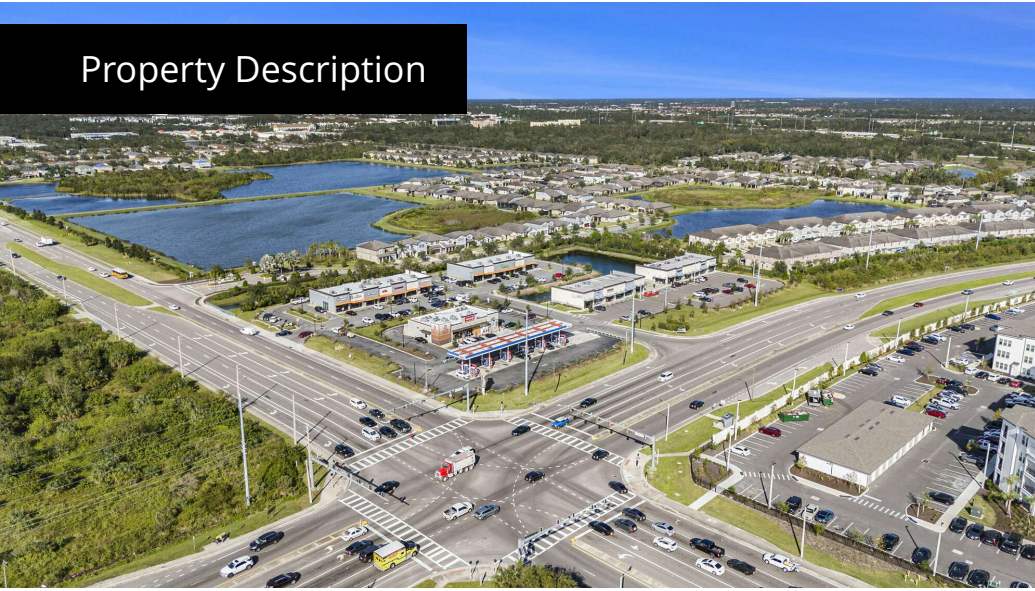


MOHAMMAD MUSTAFA
813.385.6021
mustafa@nationrs.com

MOHANAD RIFAIE
813.777.1854
mrifaie@nationrs.com

Property Description

PROGRESS PLAZA



PROPERTY DESCRIPTION

Progress Plaza at 9076 Progress Boulevard offers flexible leasing options for businesses seeking prime commercial space in Riverview, FL. This modern, newly built property boasts a versatile layout, ideal for retail, office, or restaurant ventures, with the added flexibility to include an outdoor patio area.

Offering customizable space to suit your business needs, ample on-site parking, and high visibility from both Falkenburg and Progress Boulevard, this property is designed to accommodate businesses of all sizes. Situated in a bustling commercial hub with easy access to major roadways, Progress Plaza ensures convenience for both customers and employees, making it a perfect opportunity to establish or expand your business in this thriving area.

LOCATION DESCRIPTION

Situated in the heart of Progress Village, Progress Plaza is ideally located to serve the rapidly growing communities of Riverview, Bloomingdale, and Brandon. This high-visibility property offers easy access to major business districts like the Port of Tampa and the Falkenburg office district, making it a convenient destination for both local residents and daily commuters. With its close proximity to I-75 and the Selmon Expressway, Progress Plaza provides unparalleled convenience, attracting steady traffic from nearby neighborhoods and major employers. Surrounded by a wealth of amenities—including shopping, dining, and recreation—this dynamic location is perfect for businesses seeking to thrive in a vibrant and expanding community.



MOHAMMAD MUSTAFA
813.385.6021
mustafa@nationrs.com

MOHANAD RIFAIE
813.777.1854
mrifaie@nationrs.com

Demographics Map & Report

| POPULATION | 0.3 MILES | 0.5 MILES | 1 MILE |
|----------------------|-----------|-----------|--------|
| Total Population | 584 | 3,882 | 12,418 |
| Average Age | 37 | 37 | 36 |
| Average Age (Male) | 36 | 36 | 34 |
| Average Age (Female) | 38 | 39 | 37 |

| HOUSEHOLDS & INCOME | 0.3 MILES | 0.5 MILES | 1 MILE |
|---------------------|-----------|-----------|-----------|
| Total Households | 264 | 1,656 | 5,045 |
| # of Persons per HH | 2.2 | 2.3 | 2.5 |
| Average HH Income | \$95,496 | \$92,612 | \$81,042 |
| Average House Value | \$312,203 | \$306,824 | \$279,763 |

Demographics data derived from AlphaMap

