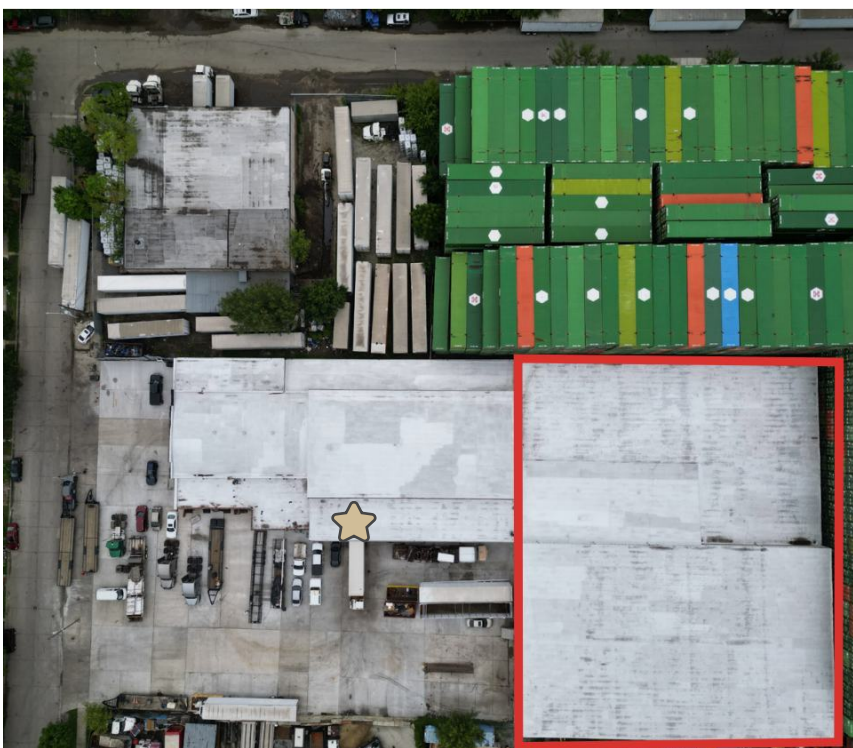


1017 W 48th Street, Chicago, IL  
Available for Lease



#### PROPERTY HIGHLIGHTS

- 34,626 SF
- 3 Exterior docks
- 20' Clear
- Brand new roof
- Brand new office
- Brand new LED Lighting
- Brand new dock doors
- Brand new concrete in truck court
- 13-15 trailer parking spots available

1017 W 48th Street, Chicago, IL  
Available for Lease

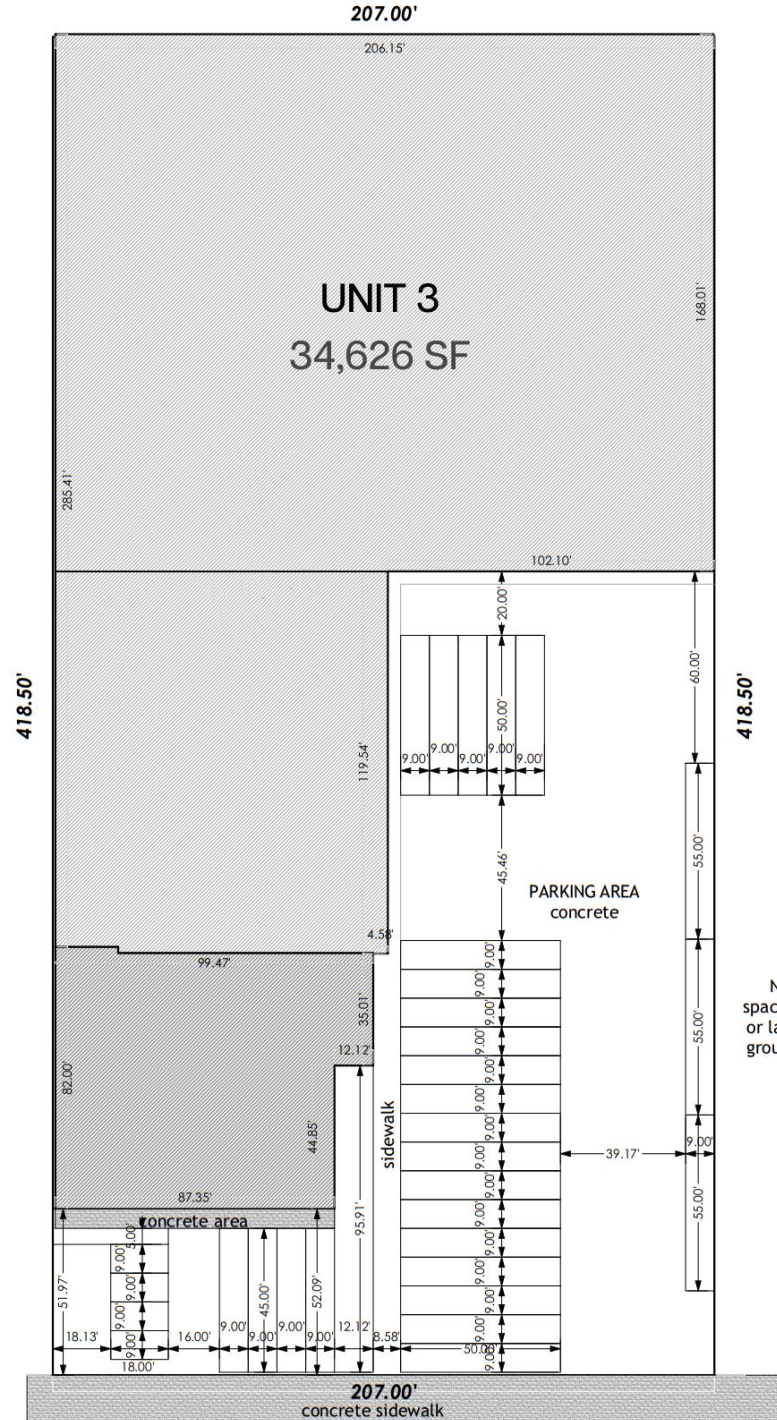


# 1017 W 48th Street, Chicago, IL

## Available for Lease

### K&G MASTER TRUCK REPAIR SHOP

1017 W. 48TH ST. CHICAGO, IL



Note: All parking spaces must be painted or labeled stripping on ground or floor of your location



### Architectural Site Plan

SCALE: 1/32" = 1'-0"

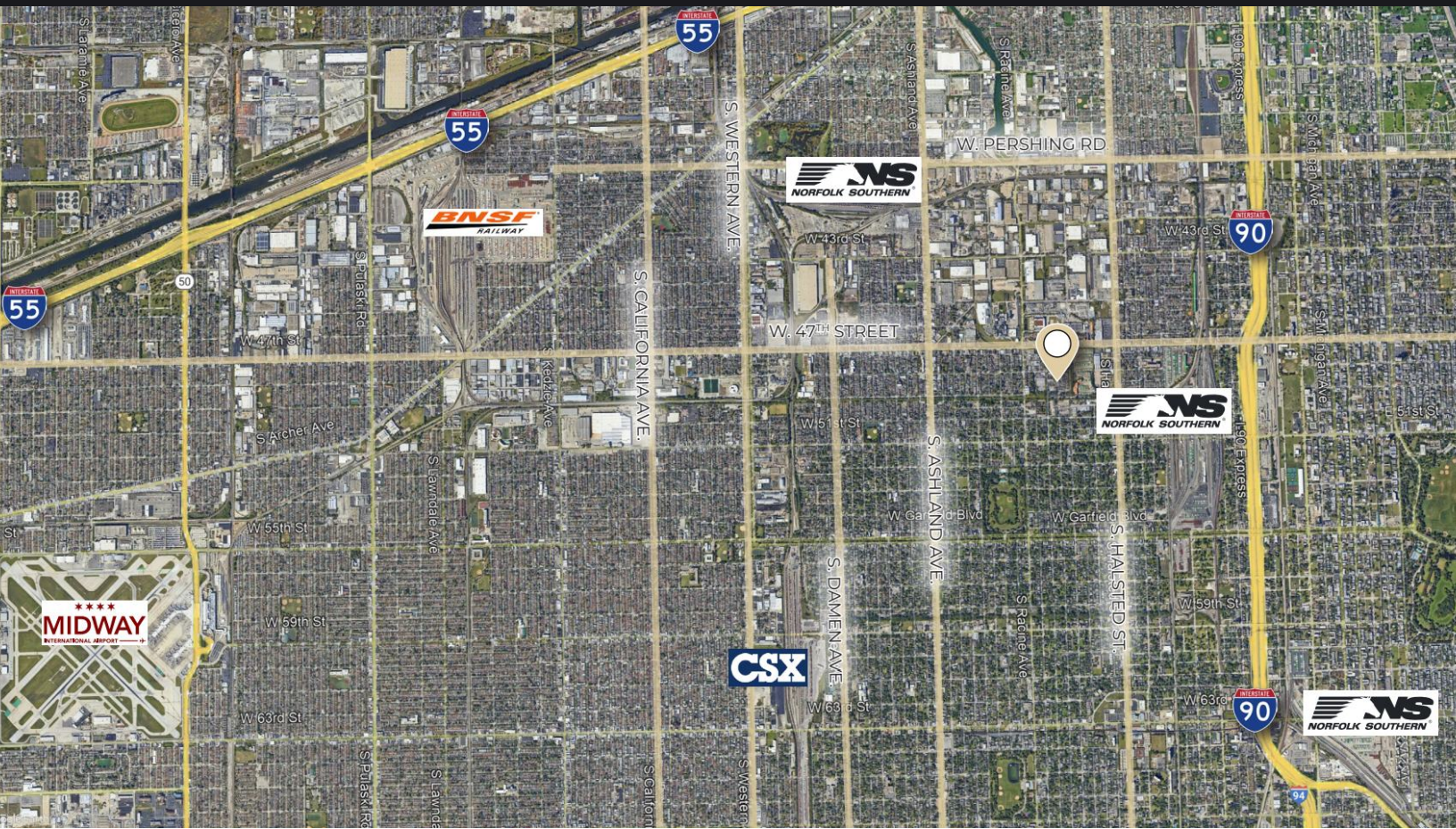
EXISTING BUILDING  
Site Plan  
**A-1**



09/23/24

# 1017 W 48th Street, Chicago, IL

Available for Lease



## Close proximity to:

- Midway Airport
- BNSD Corwith Intermodal
- CSX Intermodal 59th St Stockyard
- 51st St Stockyard
- Norfolk Southern Intermodal Yard
- I-55
- I-90
- Damen Ave
- Ashland Ave
- California Ave
- Pershing Rd
- Western Ave

**Matt Knafel**

Partner

mknafel@kwilladvisors.com  
(317) 385 – 9808

**Marco Federow**

Director

mfederow@kwilladvisors.com  
(312) 805 – 5626