

1400 E TEN MILE ROAD  
HAZEL PARK, MICHIGAN

INDUSTRIAL FOR LEASE

54,694 - 292,710 Square Feet Available



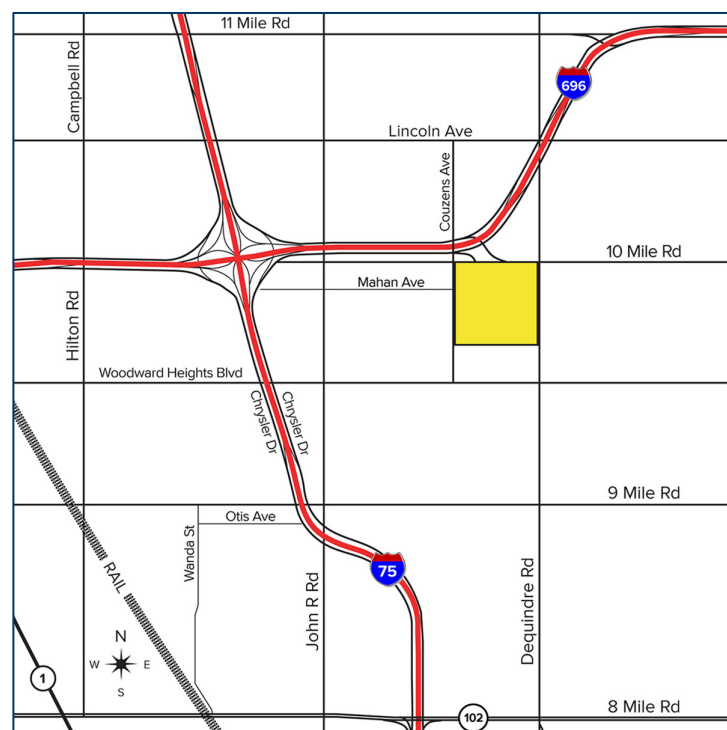
**SIGNATURE  
ASSOCIATES**  
KNOW SIGNATURE | KNOW RESULTS

**TRI-COUNTY COMMERCE CENTER I**



## PROPERTY FEATURES

- 54,694 - 292,710 square feet available
- 238,016 square feet available in Suite 100
  - 224,412 sq. ft. of warehouse / 13,604 sq. ft. of office
- 54,694 square feet available in Suite 150
  - 49,967 sq. ft. of warehouse / 4,727 sq. ft. of office
- 32' clear height
- Min 50'x52'4" column spacing - 60' speed bays
- (15) truck docks equipped with the ability to add an additional (53) equipped truck docks
- (1) 13' x 14' grade level door per suite
- 1000 amps / 480 volt power
- ESFR fire suppression
- Lease Rate: \$8.95/sq. ft. NNN



For more information, please contact:

**GREG HUDAS**  
(248) 799 3162

ghudas@signatureassociates.com

**JOE HAMWAY**  
(248) 948 0113

jhamway@signatureassociates.com

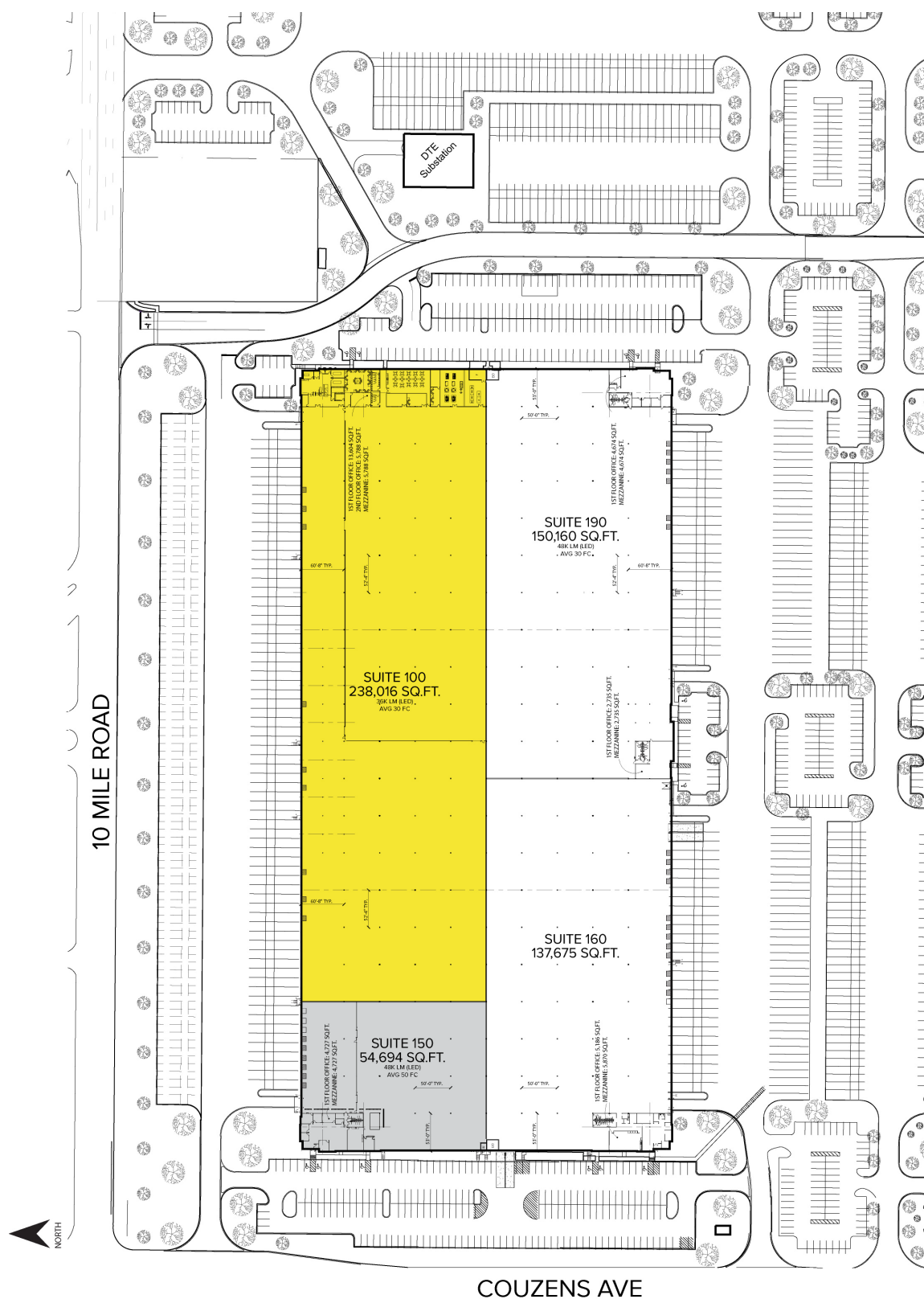
**SIGNATURE ASSOCIATES**  
One Towne Square, Suite 1200  
Southfield, MI 48076  
www.signatureassociates.com

# 1400 E Ten Mile Road – Hazel Park, MI

## Industrial For Lease

54,694 - 292,710  
Square Feet  
AVAILABLE

### Site Plan



For more information, please contact:

**GREG HUDAS**

(248) 799 3162

ghudas@signatureassociates.com

**JOE HAMWAY**

(248) 948 0113

jhamway@signatureassociates.com

**SIGNATURE ASSOCIATES**

One Towne Square, Suite 1200

Southfield, MI 48076

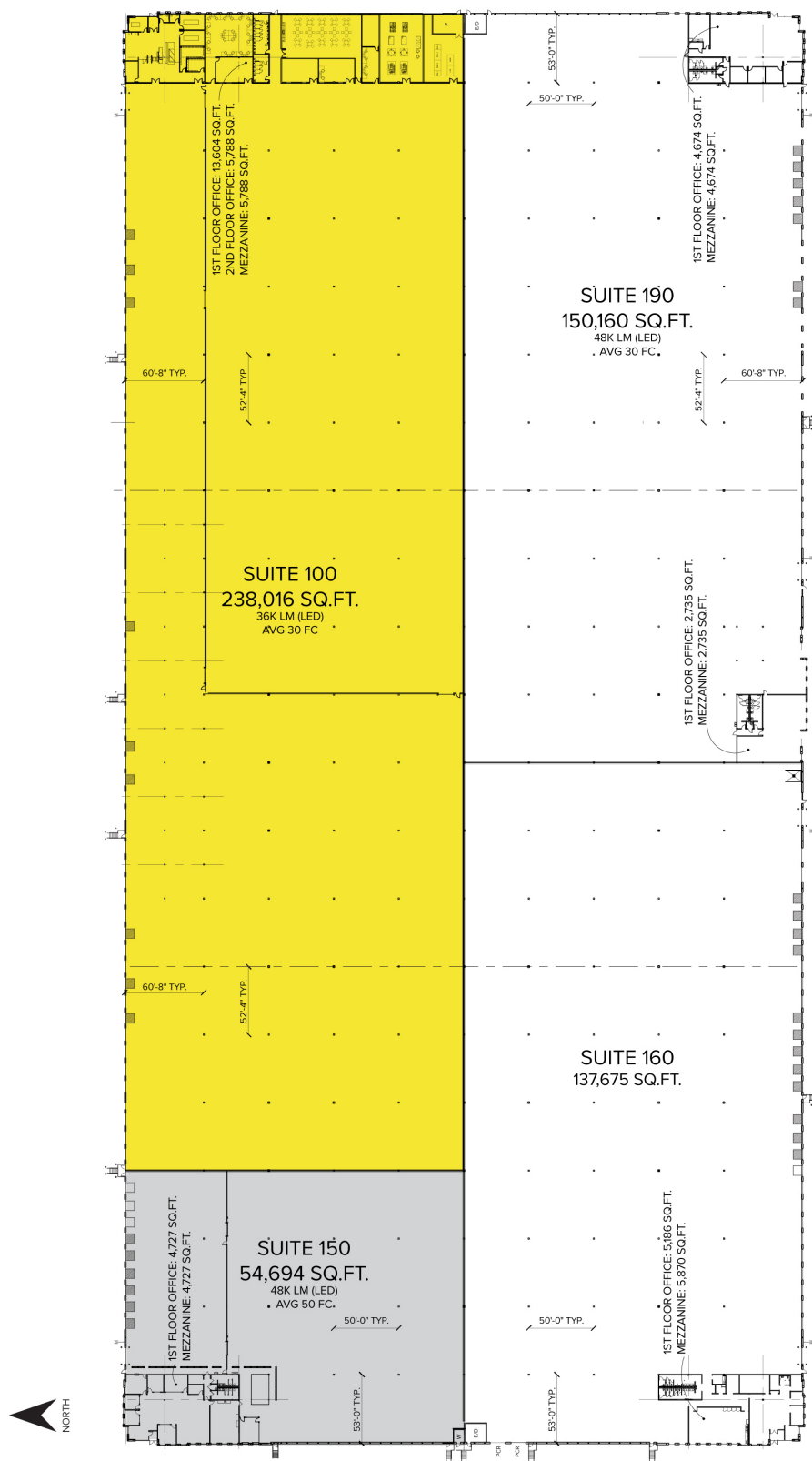
www.signatureassociates.com

# 1400 E Ten Mile Road – Hazel Park, MI

## Industrial For Lease

54,694 - 292,710  
Square Feet  
AVAILABLE

### Floor Plan



For more information, please contact:

**GREG HUDAS**  
(248) 799 3162

[ghudas@signatureassociates.com](mailto:ghudas@signatureassociates.com)

**JOE HAMWAY**  
(248) 948 0113

[jhamway@signatureassociates.com](mailto:jhamway@signatureassociates.com)

**SIGNATURE ASSOCIATES**  
One Towne Square, Suite 1200  
Southfield, MI 48076  
[www.signatureassociates.com](http://www.signatureassociates.com)

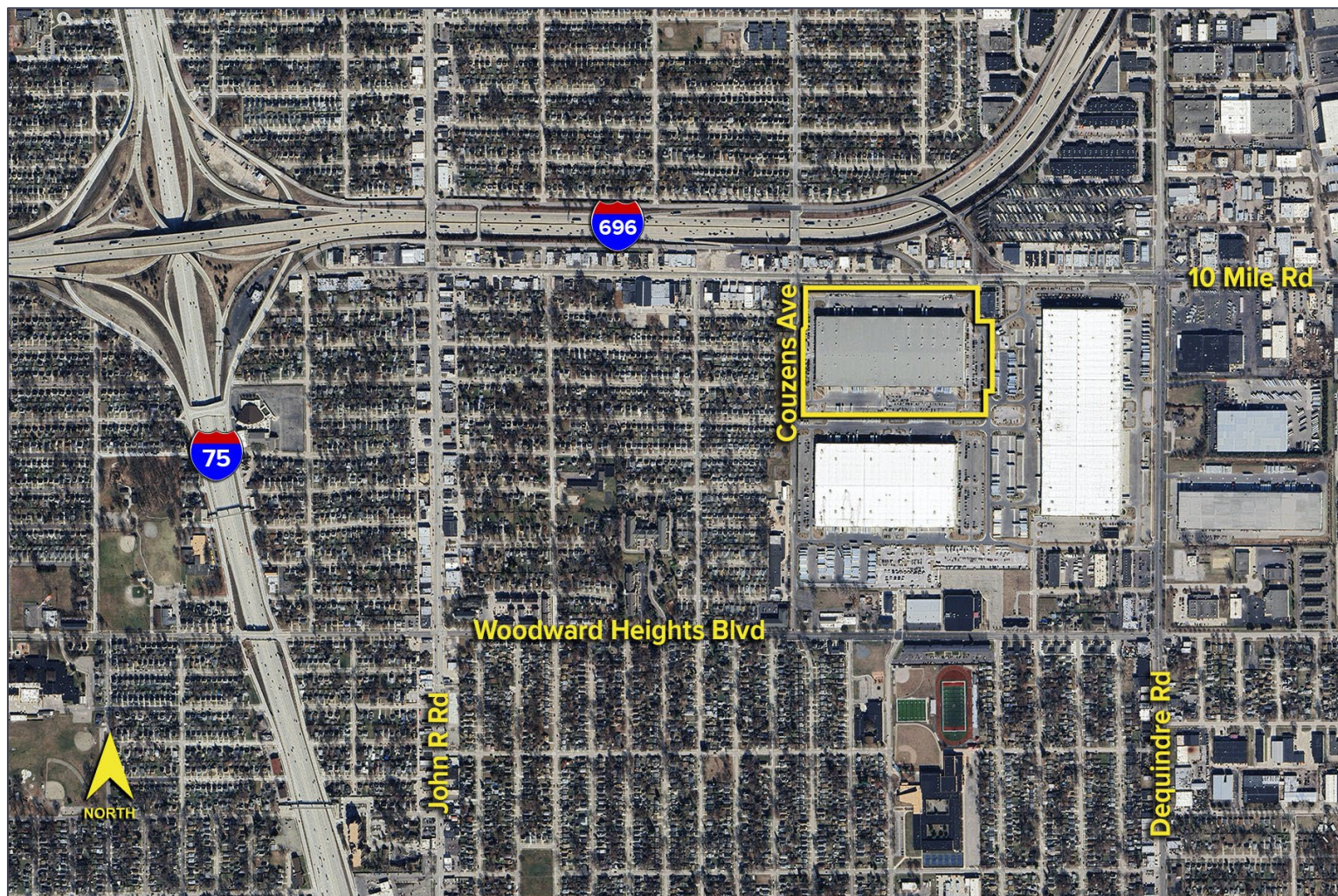


# 1400 E Ten Mile Road – Hazel Park, MI

## Industrial For Lease

54,694 - 292,710  
Square Feet  
AVAILABLE

Aerial



For more information, please contact:

**GREG HUDAS**

(248) 799 3162

[ghudas@signatureassociates.com](mailto:ghudas@signatureassociates.com)

**JOE HAMWAY**

(248) 948 0113

[jhamway@signatureassociates.com](mailto:jhamway@signatureassociates.com)

**SIGNATURE ASSOCIATES**

One Towne Square, Suite 1200

Southfield, MI 48076

[www.signatureassociates.com](http://www.signatureassociates.com)

Information is subject to verification and no liability for errors or omissions is assumed. Price is subject to change and listing withdrawal.