



1412 ROYAL PALM SQUARE BLVD, UNIT 104 | FORT MYERS, FL 33919

1,005 SF OFFICE SUITE FOR LEASE

FOR SALE OR LEASE

CONTACT

Tim Frederic
239-822-2728
tim@mayhughcommercial.com

Chris Ferritto
239-310-6257
chris@mayhughcommercial.com



MAYHUGH
COMMERCIAL ADVISORS

13099 S. Cleveland Ave. Suite 410
Fort Myers, FL 33907

MAYHUGHCOMMERCIAL.COM

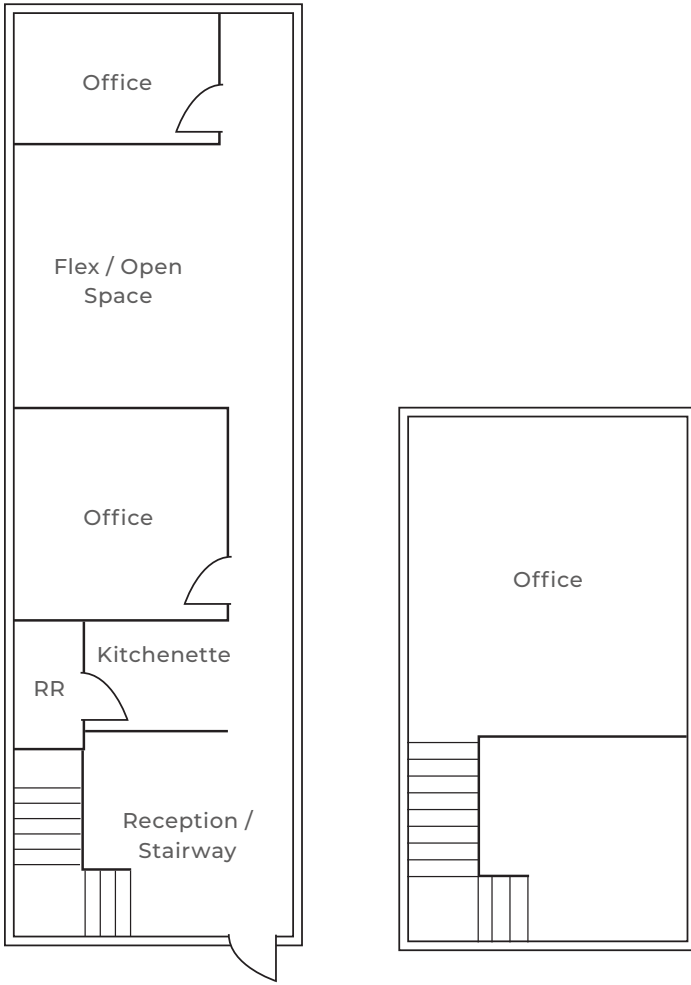
Prime Office Suite for Sale or Lease in Excellent Location

Great Location - just over the Midpoint Bridge off Colonial Blvd between Summerlin Rd and McGregor Blvd. This office suite has reception, two private offices, an open flex space, one restroom, and kitchenette on the first floor. There is one additional office on the second floor. The exterior of the building was recently redone, including a new roof, new paint, and new landscaping. Great zoning allows for a wide array of uses. **Call today to schedule a showing!**

PROPERTY DETAILS

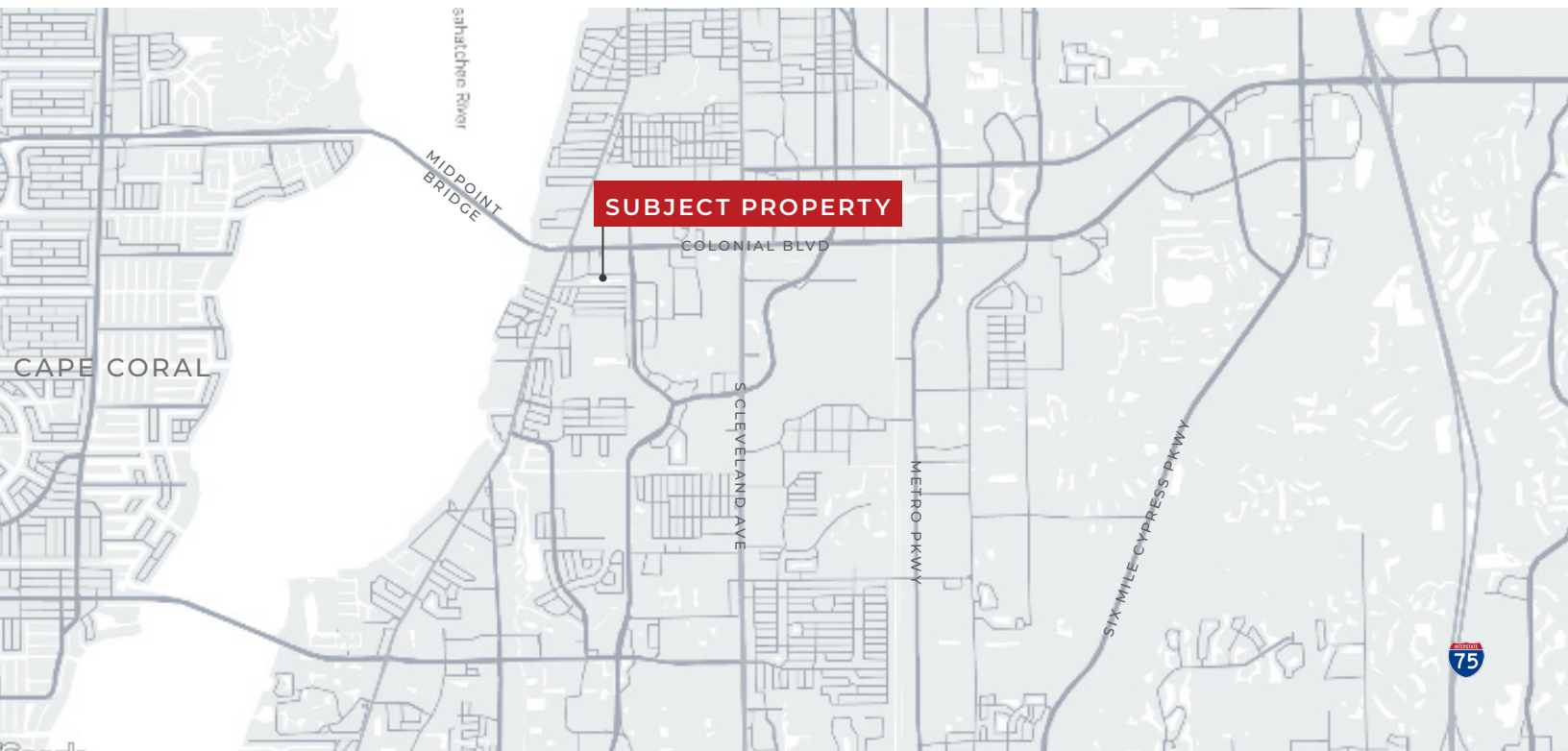
SALE PRICE	\$226,125
LEASE RATE	\$2,000/month + sales tax
LEASE TYPE	Gross
AVAILABILITY	Available immediately
UNIT SIZE	1,005 SF
ZONING	CG
YEAR BUILT	1984

FLOORPLAN



This floorplan is provided for illustrative purposes only and is not drawn to scale.





This marketing brochure serves as a reference for informational purposes only and does not constitute an offer for sale or lease, nor does it serve as a solicitation for an offer to purchase or lease. While the information contained herein is believed to be reliable, its accuracy, completeness, or reliability cannot be guaranteed. Prospective buyers or lessees are encouraged to conduct their own investigations and due diligence to verify the information provided. All descriptions, dimensions, conditions, permissions for use, and other details are offered in good faith but are subject to verification. No express or implied warranty or representation is made regarding the accuracy of the information herein. The content is subject to errors, omissions, price changes, withdrawal without notice, and any special listing conditions imposed by our principals.