



FOR LEASE

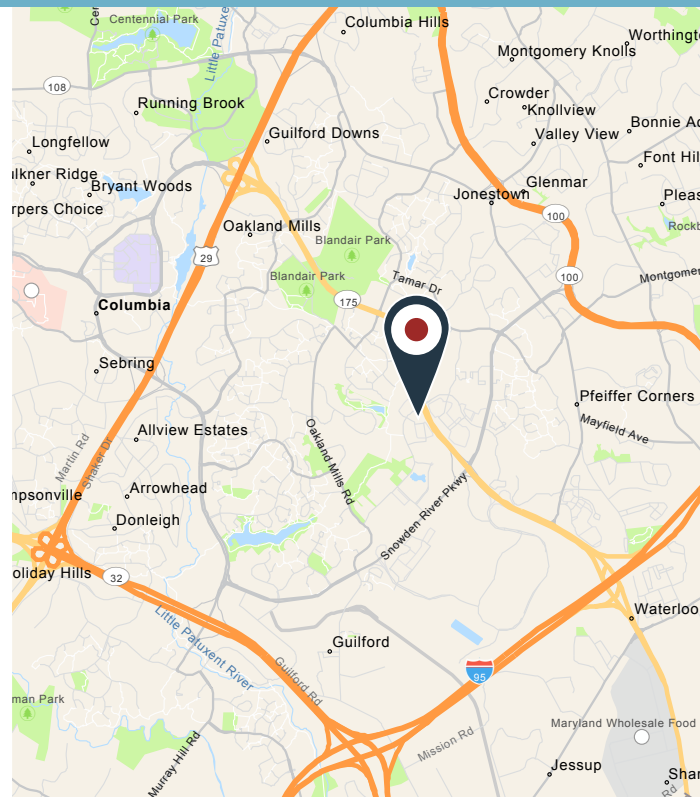
Available

- **Suite 210:** 1,000 - 3,700 square feet available with existing dental improvements; \$30.00 per square foot, Full Service
- **Suite 204:** 702 square feet; \$1,500 per month, Full Service

Building Highlights

- Two-story, elevator served building
- 70 parking spaces available
- Convenient access to Route 175, I-95, Route 29 and Route 32
- Minutes from Ft. Meade/NSA, Columbia Town Center, BWI Airport, and numerous amenities
- Elkhorn Branch Trail nearby

Nearby Amenities



Chuck Breitenother
cbreitenother@klnb.com
443-574-1422

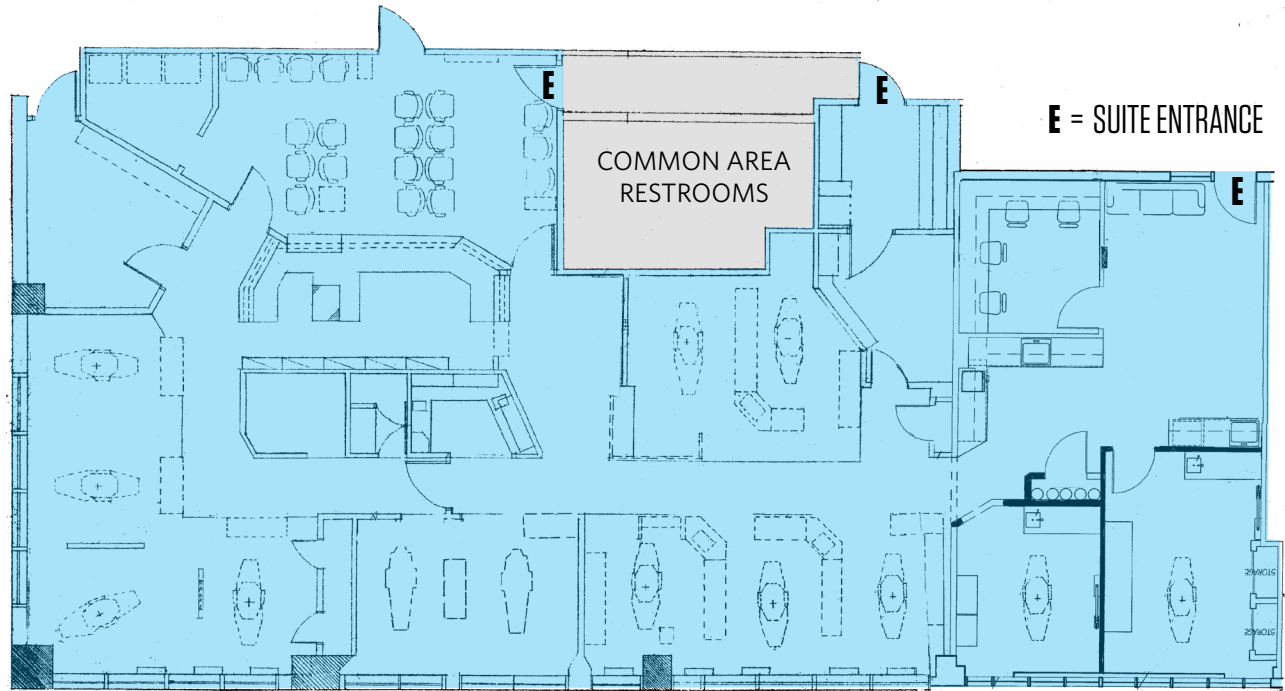
Colin McGonigal
cmcgonigal@klnb.com
443-632-2083

9881 Broken Land Pkwy, #300
Columbia, MD 21046
klnb.com

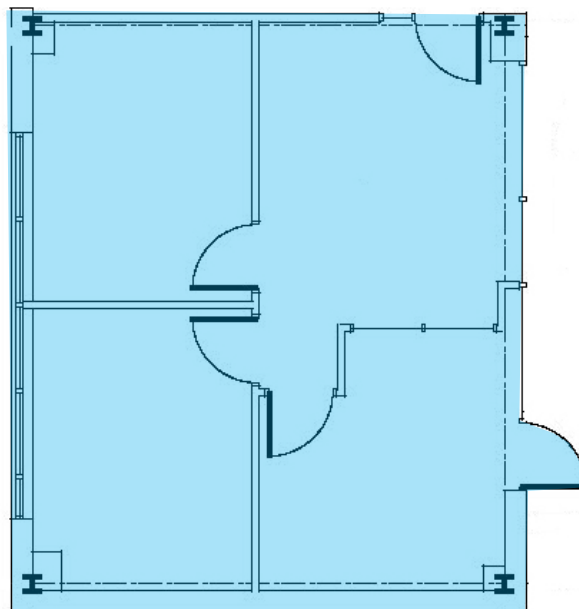
6395 DOBBIN ROAD

Columbia, MD 21045 | Howard County

FLOOR PLAN | SUITE 210 | 1,000 - 3,700 SF



FLOOR PLAN | SUITE 204 | 702 SF



Chuck Breitenother
cbreitenother@klnb.com
443-574-1422

Colin McGonigal
cmcgonigal@klnb.com
443-632-2083

AERIAL VIEW



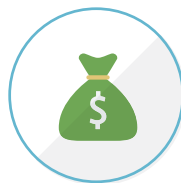
DEMOGRAPHICS | 3 MILE



POPULATION
104,139



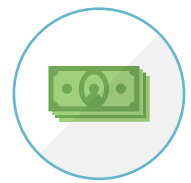
HOUSEHOLDS
39,933



**MEDIAN
HH INCOME**
\$131,630



**MEDIAN
AGE**
37.8



**DISPOSABLE
INCOME**
\$89,650

6395 DOBBIN ROAD
Columbia, MD 21045 | Howard County

[CLICK TO VIEW PROPERTY WEBSITE](#)

For More Information, Please Contact:

Chuck Breitenother
cbreitenother@klnb.com
443-574-1422

Colin McGonigal
cmcgonigal@klnb.com
443-632-2083

9881 Broken Land Parkway, Suite 300
Columbia, MD 21046

klnb.com



[instagram.com/klnbcre](https://www.instagram.com/klnbcre)



[linkedin.com/company/klnb](https://www.linkedin.com/company/klnb)



[facebook.com/KLNBCRE](https://www.facebook.com/KLNBCRE)

While we have no reason to doubt the accuracy of any of the information supplied, we cannot, and do not, guarantee its accuracy. All information should be independently verified prior to a purchase or lease of the property. We are not responsible for errors, omissions, misuse, or misinterpretation of information contained herein and make no warranty of any kind, express or implied, with respect to the property or any other matters.

NAI klnb