

LEASE

3575 Building

3575 - 3585 NORTHWEST 9TH TERRACE

Oakland Park, FL 33309

PRESENTED BY:

KEITH KIDWELL, SIOR, CCIM

C: 954.234.8777
keith@svncr.com

LES BYRON, SIOR, CCIM

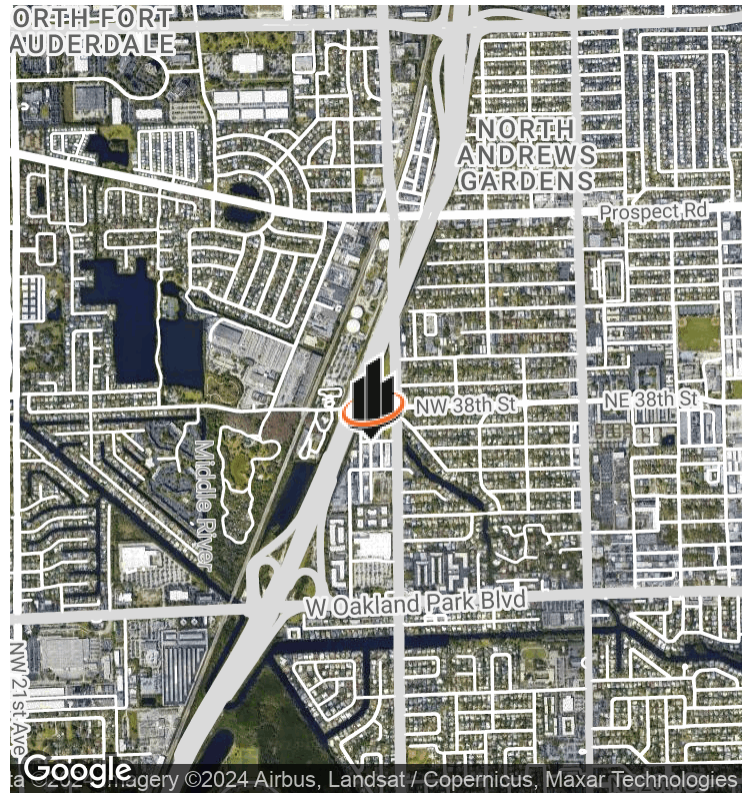
C: 954.401.4713
les@svncr.com

STEVE DAVIS

C: 954.650.7824
steve@svncr.com



PROPERTY SUMMARY



OFFERING SUMMARY

LEASE RATE:	\$22.00 SF/yr (MG)
BUILDING SIZE:	12,618 SF
AVAILABLE SF:	2,953 SF
LOT SIZE:	0.35 Acres
ZONING:	I
MARKET:	Broward
SUBMARKET:	Oakland Park
APN:	4942 21 20 0071

PROPERTY OVERVIEW

One bay available of 2,953 SF. Bay 3575 features: (2) oversized grade-level loading doors, 100 amps / 3-phase power, one restroom, 20' clear height, storage mezzanine, etc.

PROPERTY HIGHLIGHTS

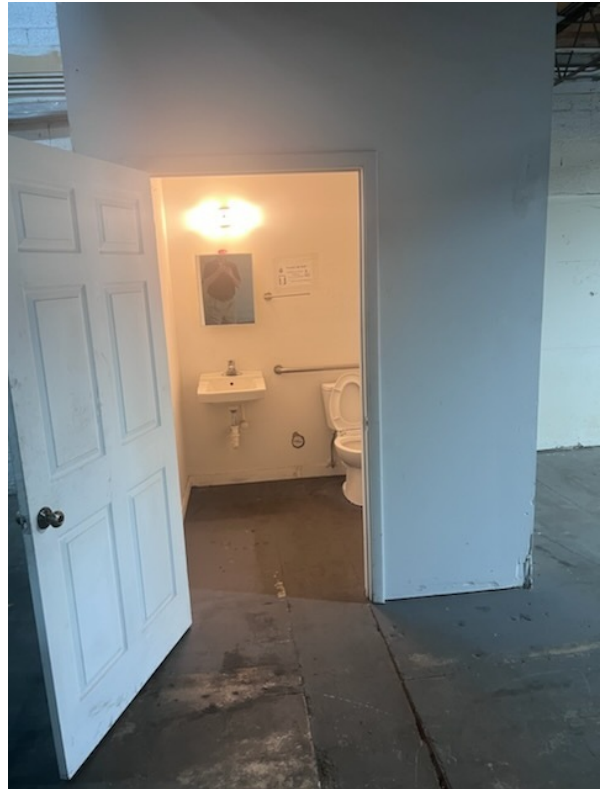
- Bay 3575: 2,953 SF First Floor and 970 SF Mezzanine.

KEITH KIDWELL, SIOR, CCIM
C: 954.234.8777
keith@svncr.com

LES BYRON, SIOR, CCIM
C: 954.401.4713
les@svncr.com

STEVE DAVIS
C: 954.650.7824
steve@svncr.com

ADDITIONAL PHOTOS

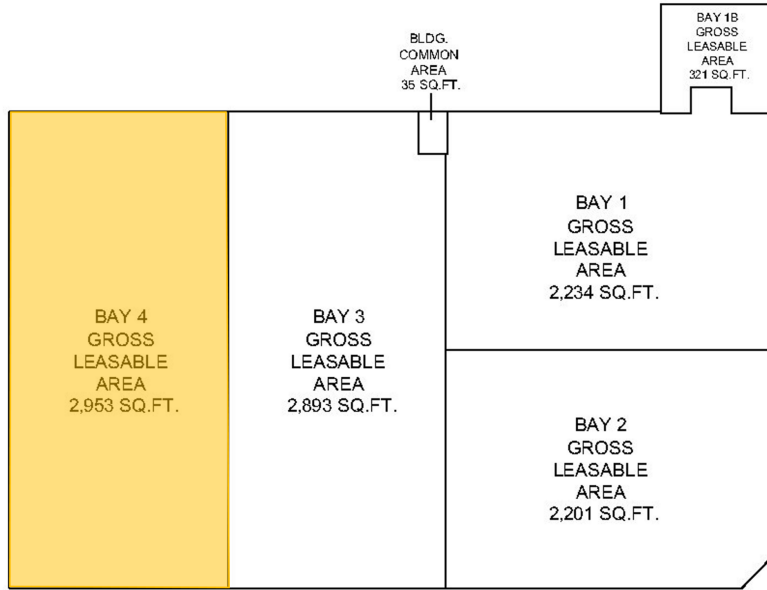


KEITH KIDWELL, SIOR, CCIM
C: 954.234.8777
keith@svncr.com

LES BYRON, SIOR, CCIM
C: 954.401.4713
les@svncr.com

STEVE DAVIS
C: 954.650.7824
steve@svncr.com

FLOOR PLANS

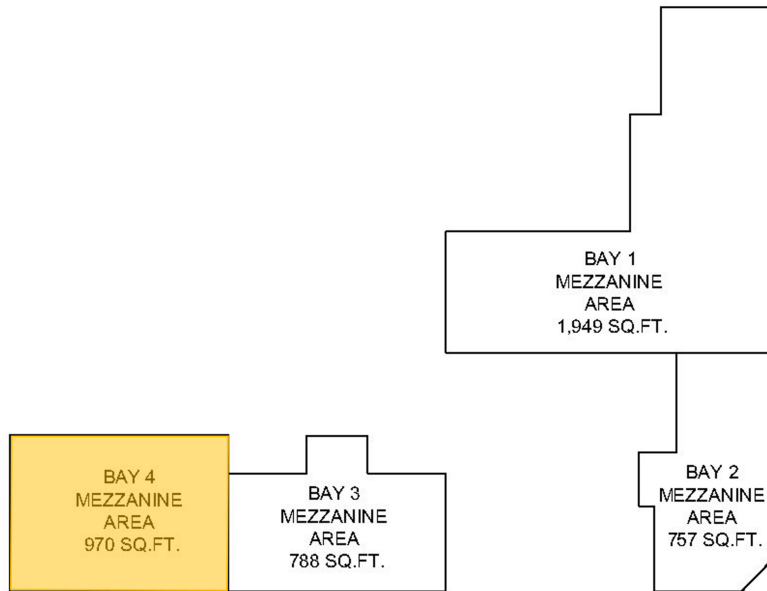


1ST FLOOR

3575-3585 NW 9 TERRACE
OAKLAND PARK, FL



FEBRUARY 7, 2023



MEZZANINE

3575-3585 NW 9 TERRACE
OAKLAND PARK, FL



FEBRUARY 7, 2023

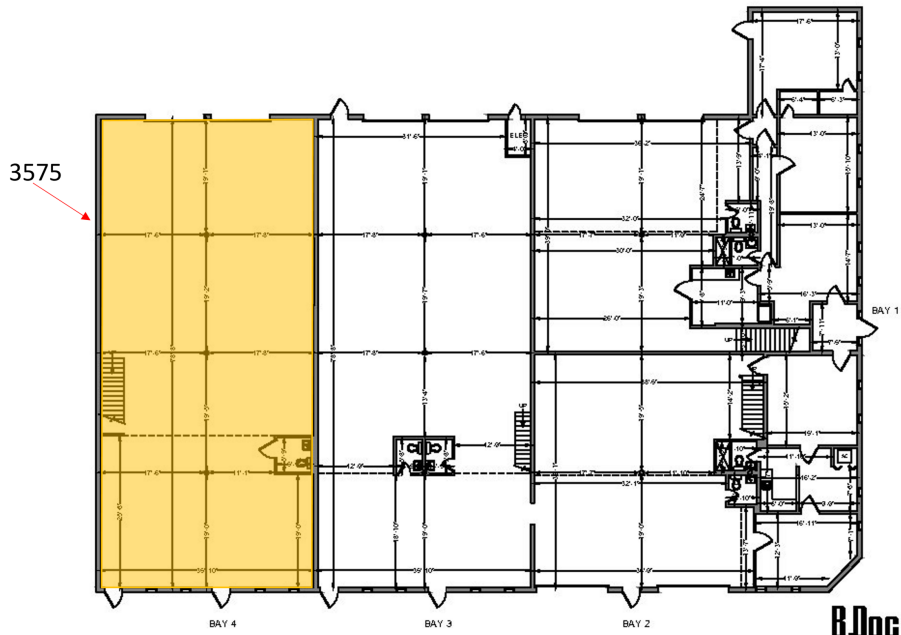


KEITH KIDWELL, SIOR, CCIM
C: 954.234.8777
keith@svncr.com

LES BYRON, SIOR, CCIM
C: 954.401.4713
les@svncr.com

STEVE DAVIS
C: 954.650.7824
steve@svncr.com

FLOOR PLANS



1ST FLOOR

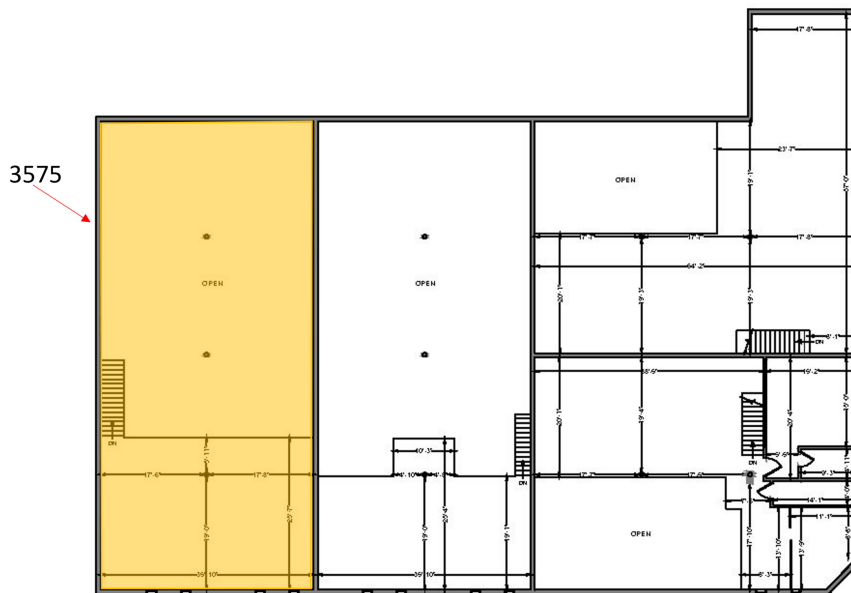
3575-3585 NW 9 TERRACE
OAKLAND PARK, FL



FEBRUARY 7, 2023

B.Doc
BUILDING
DOCUMENTATION
SPECIALISTS

9900 W. Sample Rd. Suite 300
Coral Springs, FL 33065
561.901.5733
b-doc.net



MEZZANINE

3575-3585 NW 9 TERRACE
OAKLAND PARK, FL



FEBRUARY 7, 2023

B.Doc
BUILDING
DOCUMENTATION
SPECIALISTS

9900 W. Sample Rd. Suite 300
Coral Springs, FL 33065
561.901.5733
b-doc.net

KEITH KIDWELL, SIOR, CCIM
C: 954.234.8777
keith@svncr.com

LES BYRON, SIOR, CCIM
C: 954.401.4713
les@svncr.com

STEVE DAVIS
C: 954.650.7824
steve@svncr.com